

McKay Creek National Wildlife Refuge

Hunting Regulations



Hunting is permitted in accordance with all state regulations (see www.dfw.state.or.us/resources/) and special refuge regulations.

Open to Hunting – Goose, duck, coot, snipe, dove, upland game birds, and fall season turkey.

Closed to Hunting – All other species of wildlife not listed are protected. Protected species include, but are not limited to, bear, snakes, raven, crow, coyote, spring season turkey, porcupine, squirrels, and rabbits.

Days – Waterfowl and upland bird hunting is allowed on Tuesdays, Thursdays, Saturdays, Sundays, and federally observed holidays within the respective state seasons.

Hours – The refuge is open from 1-1/2 hours before legal hunting time to 1-1/2 hours after legal hunting time.

General Public Entry – For non-hunters, the northern area of the refuge is open to public use March 1 through September 30; the southern area is open from March 1 until the last day of the state waterfowl season (see map). Access is 7 days a week from sunrise to sunset.

Permits – Refuge hunting permits are only required to hunt the opening weekend of upland game bird season. To apply for an opening weekend day, please check the refuge website (www.fws.gov/refuge/mckay_creek/) for instructions. One guest per person is allowed. Permits are non-transferable.

Firearms & Ammunition – Firearms may only be discharged in accordance with FWS regulations (50 CFR 27.42) and refuge-specific regulations (50 CFR Part 32). Only shotguns are permitted. Only federally approved non-toxic shot may be used or possessed for shotguns.

Blinds – Only portable or temporary blinds constructed of non-living natural materials are permitted. Digging or using pit blinds is not permitted.

Vehicle Travel – Access for hunting is from 3 parking areas off Shaw Road on the east side of the refuge. Motorized vehicles and bicycles are restricted to designated motorized routes of travel and parking areas.

Boats – All boats are prohibited on the reservoir during the hunting season.

Dogs – Dogs must be kept on leashes, except during the lawful pursuit of game during legal seasons.

Details on Specific Hunt Areas

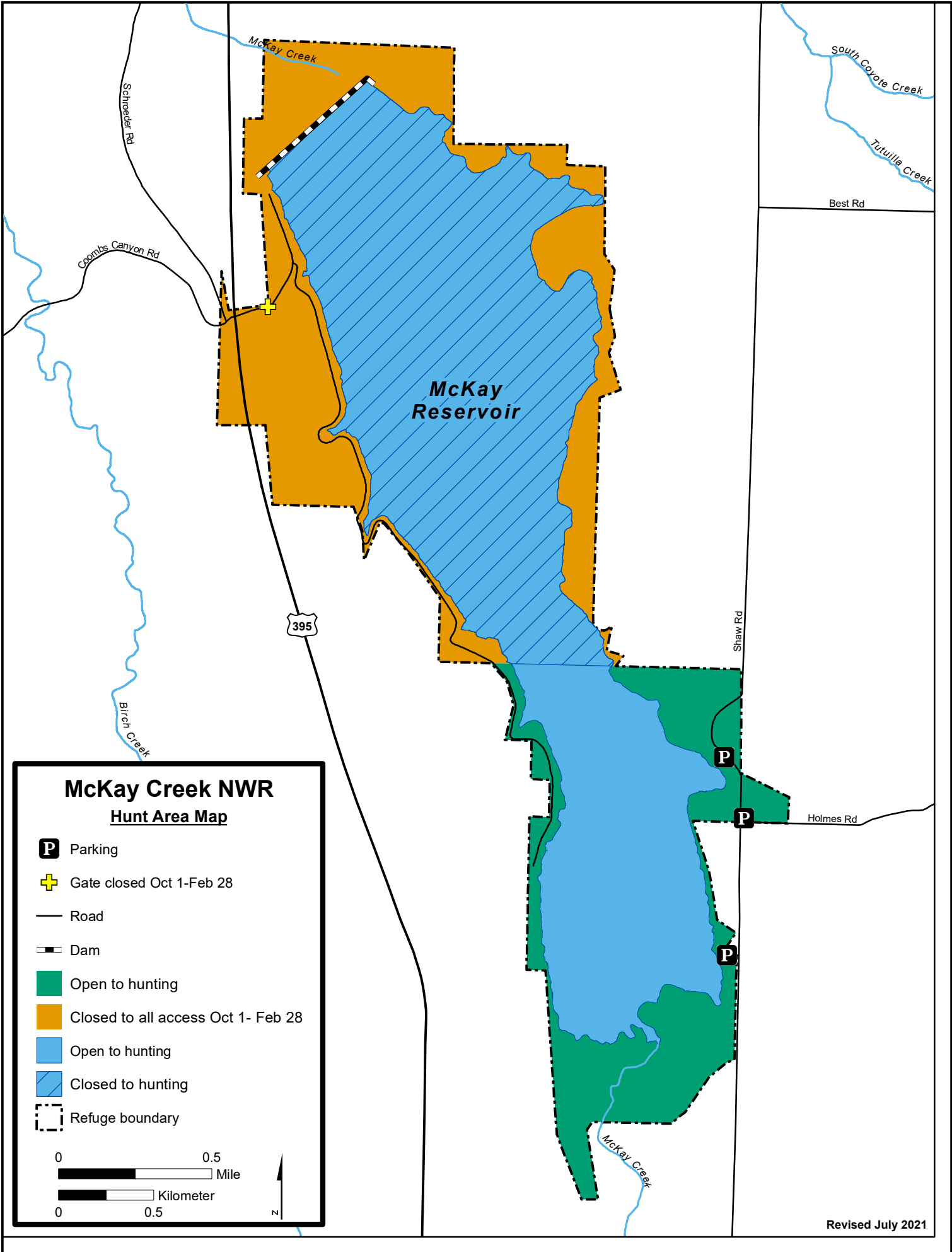
Only the south end of the refuge is open to hunting. A large portion of the refuge is closed to all access during the fall and winter (see map).

Selected Prohibited Activities

- The use or possession of alcoholic beverages while hunting
- Baiting of any wildlife, trapping, or netting
- Fires
- Overnight camping
- Overnight parking
- Littering (including empty shotgun hulls)
- Use of ATVs and other off-road vehicles
- Commercial guiding for hunting
- Abandoning, discarding, or otherwise leaving personal property unattended
- Target shooting
- Discharging any firearm within 1/4 mile of any maintained building
- Falconry

Contact Information

McKay Creek National Wildlife Refuge
c/o McNary National Wildlife Refuge
64 Maple Street
Burbank, WA 99323
509/546-8300
www.fws.gov/refuge/mckay_creek/



McKay Creek NWR
Hunt Area Map

- P** Parking
- +** Gate closed Oct 1-Feb 28
- Road
- ▬ Dam
- Open to hunting
- Closed to all access Oct 1- Feb 28
- Open to hunting
- ▨ Closed to hunting
- ▭ Refuge boundary

