

# Conboy Lake National Wildlife Refuge

## *Hunting Regulations*



Hunting is permitted in accordance with state regulations (see [wdfw.wa.gov/hunting/regulations/](http://wdfw.wa.gov/hunting/regulations/)) and special refuge regulations.

**Open to Hunting** – Goose, duck, coot, and snipe.

**Closed to Hunting** – All other species of wildlife not listed are protected. Examples include doves, elk, deer, bear, cougar, snakes, raven, crow, coyote, porcupine, turkey, squirrels, and rabbits.

**Days** – The refuge is open to the hunting of the above listed species 7 days a week in accordance with state regulations.

**Hours** – The refuge is open from 1-1/2 hours before legal hunting time to 1-1/2 hours after legal hunting time.

**General Public Entry** – For non-hunters, the open areas of the refuge are available to the public 7 days a week from sunrise to sunset.

**Firearms & Ammunition** – Only archery, shotguns, and muzzleloaders are permitted. Only federally approved non-toxic shot may be used or possessed for shotguns. Firearms may only be discharged in accordance with FWS regulations (50 CFR 27.42) and refuge-specific regulations (50 CFR Part 32).

**Blinds** – Only portable or temporary blinds constructed of non-living natural materials are permitted. Digging or using pit blinds is not permitted.

**Boats** – Non-motorized boats or floating devices may be used during the hunting season only to set decoys and retrieve downed birds. Motorized boats are prohibited.

**Vehicle Travel** – Motorized vehicles and bicycles are restricted to designated motorized routes of travel and parking areas.

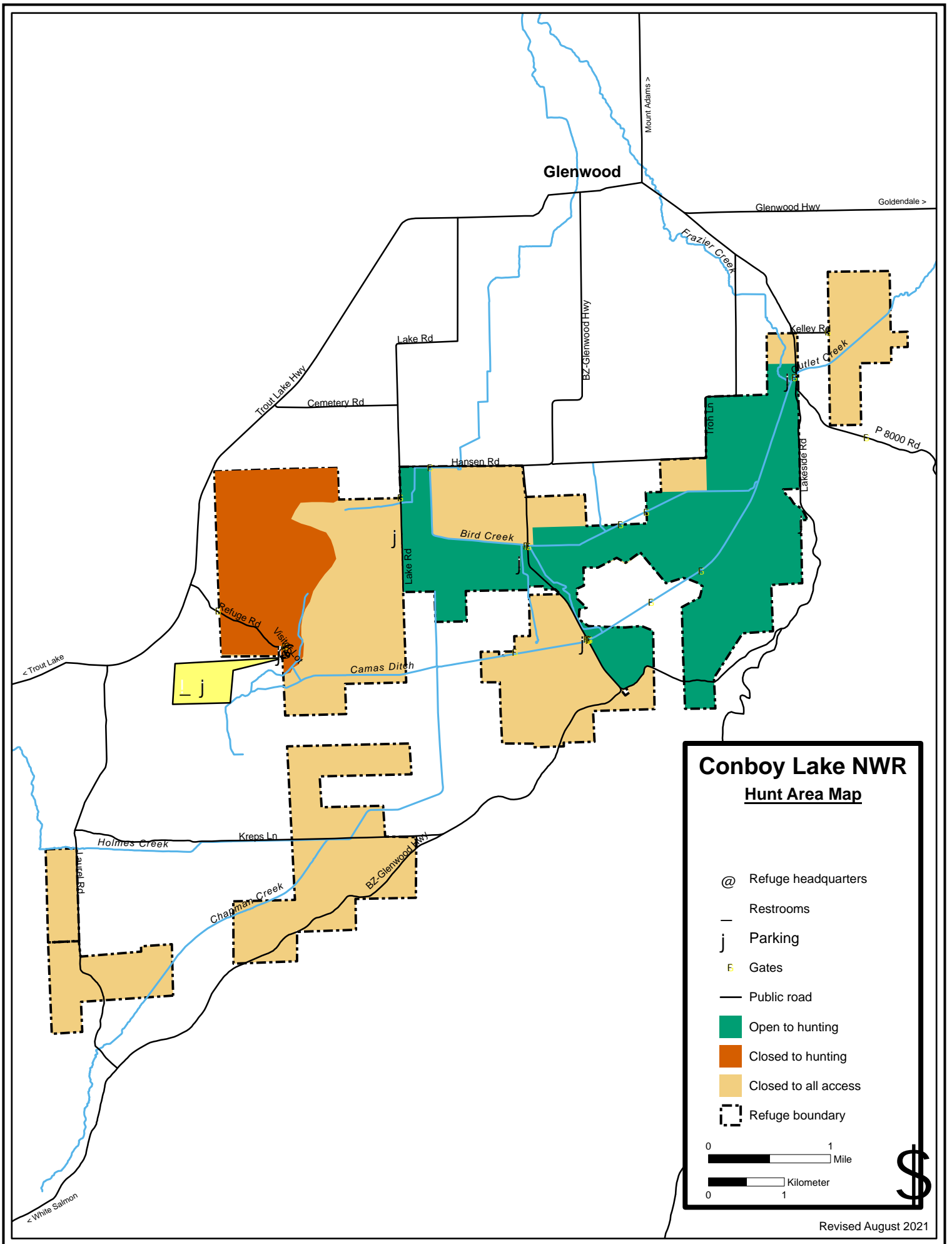
**Dogs** – Dogs must be kept on leashes, except during the lawful pursuit of game during legal seasons.

### Selected Prohibited Activities

- The use or possession of alcoholic beverages while hunting
- Baiting of any wildlife
- Fires
- Horseback riding, except on roads open to motor vehicles
- Overnight camping
- Overnight parking
- Littering (including empty shotgun hulls)
- Use of ATVs and other off-road vehicles
- Commercial guiding for hunting
- Abandoning, discarding, or leaving personal property unattended
- Target shooting
- Discharging any firearm within 1/4 mile of any maintained building
- Collecting of plants, animals, minerals, antlers, or other materials
- Trapping or netting
- Falconry

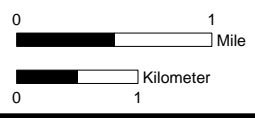
### Contact Information

Conboy Lake National Wildlife Refuge  
100 Wildlife Refuge Road  
Post Office Box 5  
Glenwood, WA 98619  
509/364-3667  
[www.fws.gov/refuge/conboy\\_lake/](http://www.fws.gov/refuge/conboy_lake/)



## Conboy Lake NWR Hunt Area Map

- @ Refuge headquarters
- Restrooms
- j Parking
- E Gates
- Public road
- Open to hunting
- Closed to hunting
- Closed to all access
- Refuge boundary



Revised August 2021