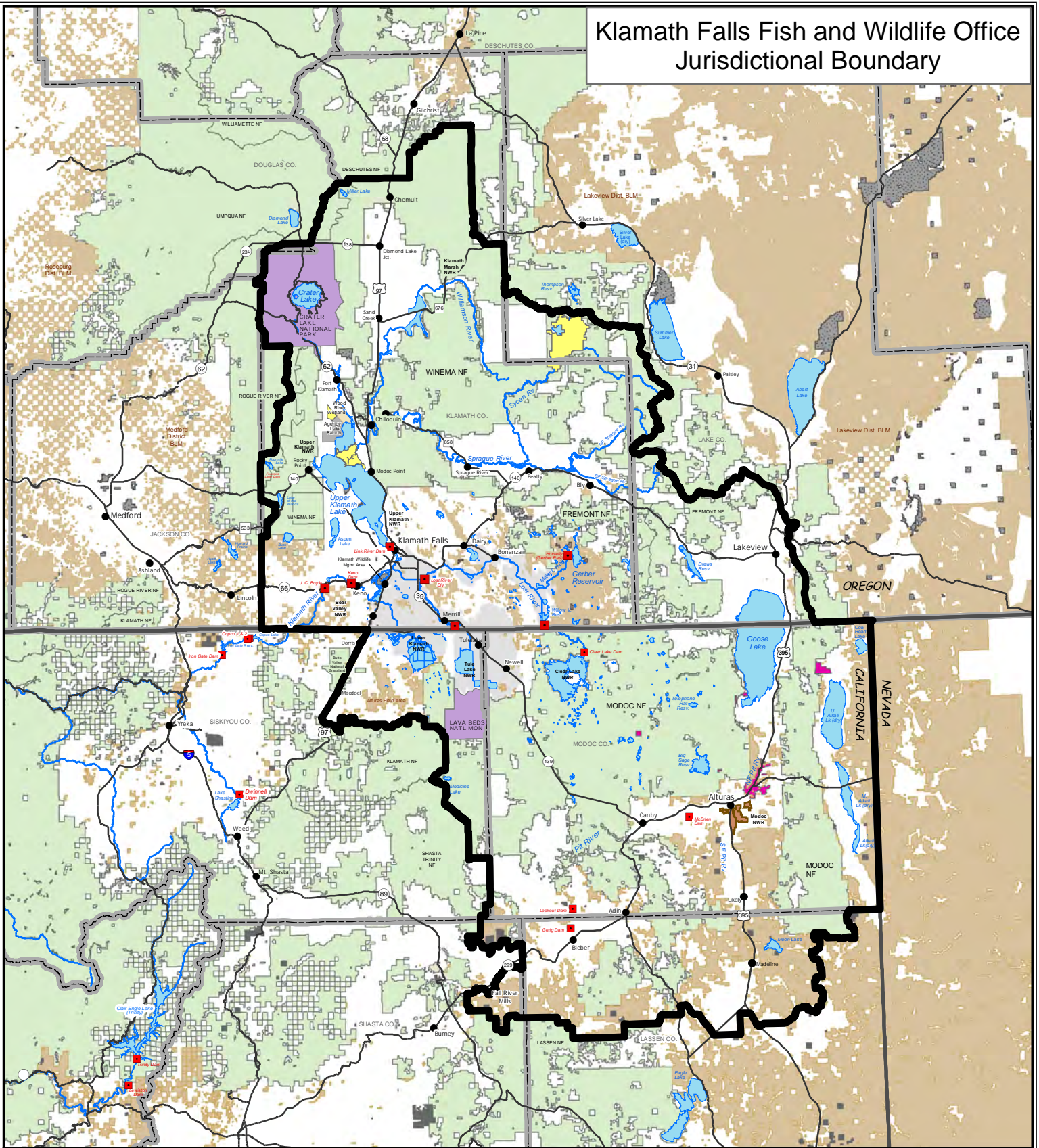


Klamath Falls Fish and Wildlife Office Jurisdictional Boundary



- Legend**
- KFFWO Jurisdiction
 - National Forest
 - Bureau of Land Management
 - National Park Service
 - National Wildlife Refuge
 - Federally Recognized Tribes' Lands
 - State of Oregon
 - State of California
 - The Nature Conservancy

- Major Highway/Road
- Major River/Stream
- Lake/Wetland
- City/Town
- Dam

Scale 1:1,593,536



Ecological Services Jurisdiction Boundary is an approximate geographic line.



U.S. Fish and Wildlife Service
Klamath Falls Office - Klamath Falls, Oregon
Revised: February 5, 2015 - Elizabeth Willy



No warranty is made by the U.S. Fish and Wildlife Service as to the accuracy, reliability, or completeness of these data for individual or aggregate use with other data. Original data were compiled from various sources. Spatial information may not meet National Map Accuracy Standards. This information may be updated without notification.