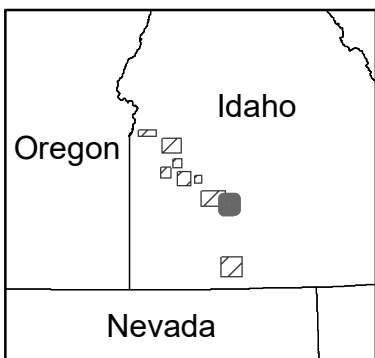
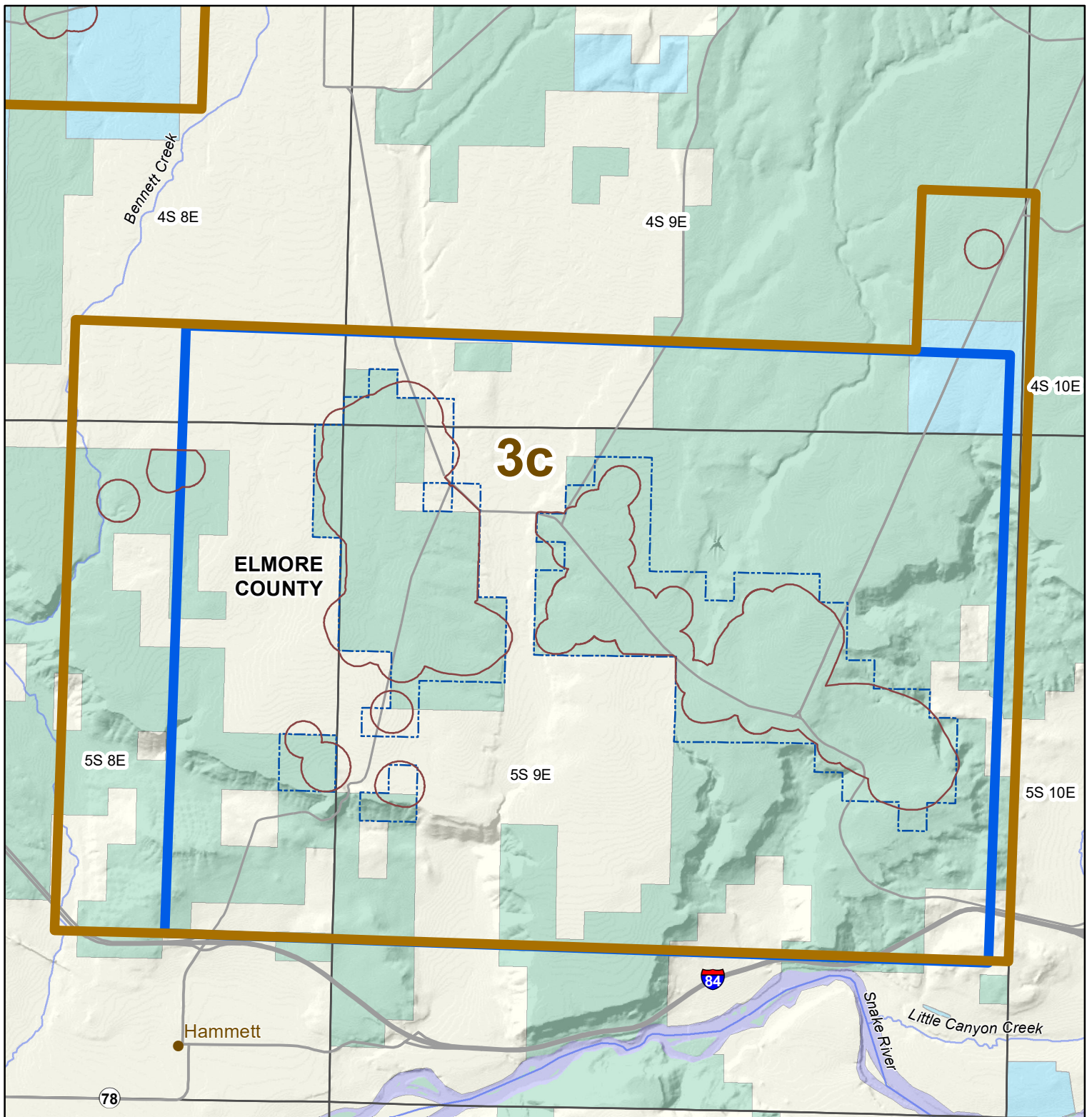


Critical Habitat for *Lepidium papilliferum* (slickspot peppergrass) Unit 3 - Subunit c



Comparison of 2014 Proposed Critical Habitat to 2020 Revised Proposed Critical Habitat

- | | | | | | |
|--|---|--|------------------------------|--|--------------|
| | 2020 Revised <i>Lepidium papilliferum</i> Proposed Critical Habitat (EOs Ranked B Through CD With 250 meter Buffer) | | Township | | Undetermined |
| | 2014 <i>Lepidium papilliferum</i> Proposed Critical Habitat | | Waterbody / River | | Reservation |
| | 2020 Subunit / Unit Boundary | | 2014 Subunit / Unit Boundary | | Stream |
| | City / Locale | | County | | Federal |
| | Roads | | Private | | State |

0 0.75 1.5 Miles

0 1 2 Kilometers

