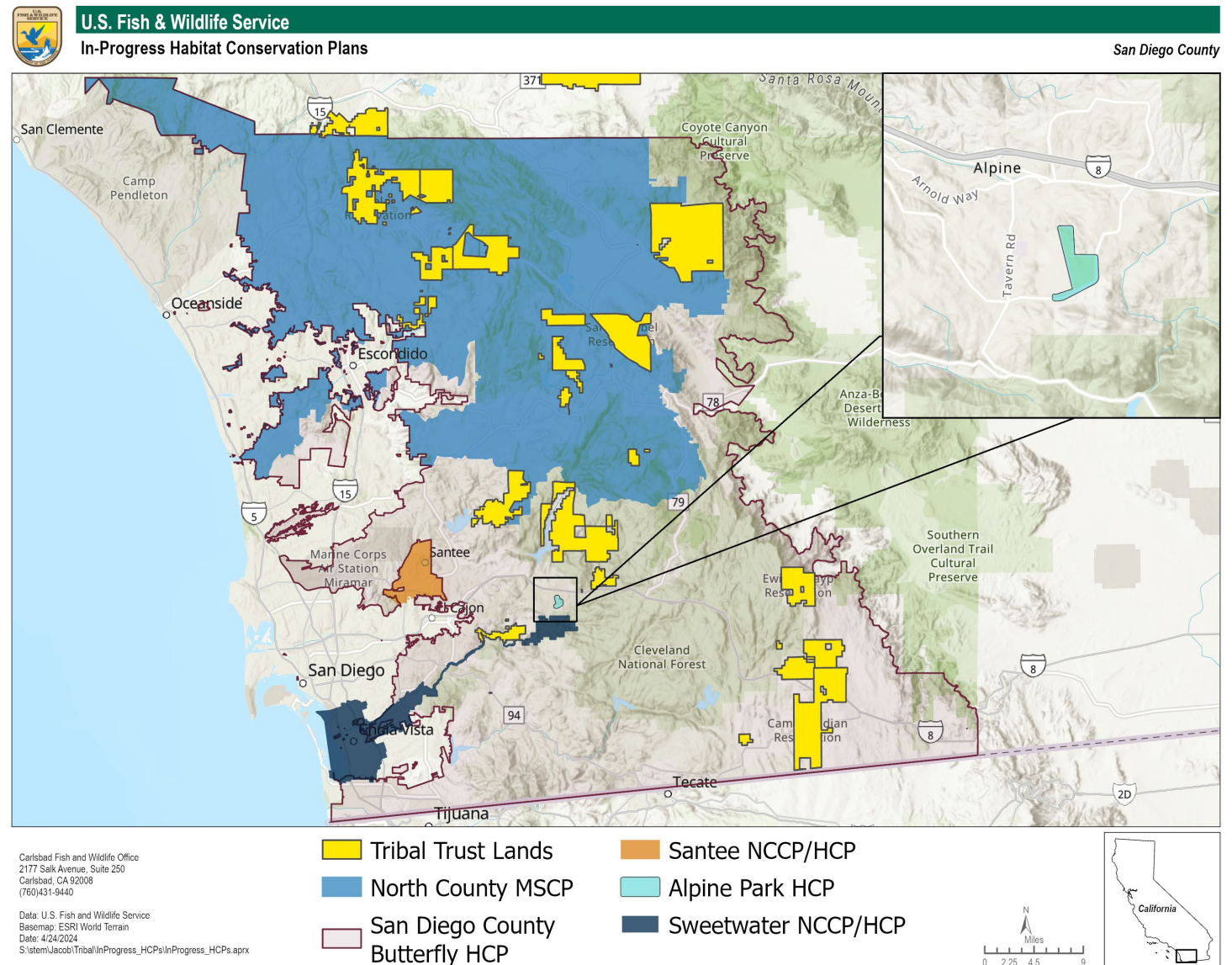


# HABITAT CONSERVATION PLANS IN CARLSBAD USFWS OFFICE'S JURISDICTION

- **North SD County MSCP:** Covers development activities in most of northern San Diego County and addresses multiple species, not including butterflies.
- **SD County Butterfly HCP:** Covers development activities throughout unincorporated San Diego County and addresses Quino checkerspot, Laguna Mountains skipper, Hermes copper, and Harbison's dun skipper.
- **Santee NCCP/HCP:** Covers development activities in the City of Santee and addresses multiple species.
- **Sweetwater Authority NCCP/HCP:** Covers operation and maintenance within the Sweetwater Authority's jurisdiction from Sweetwater Reservoir down to San Diego Bay.
- **Alpine Park HCP:** Covers park facilities on 25 acres of Wright's Field in Alpine and addresses Quino checkerspot butterfly and western spadefoot.



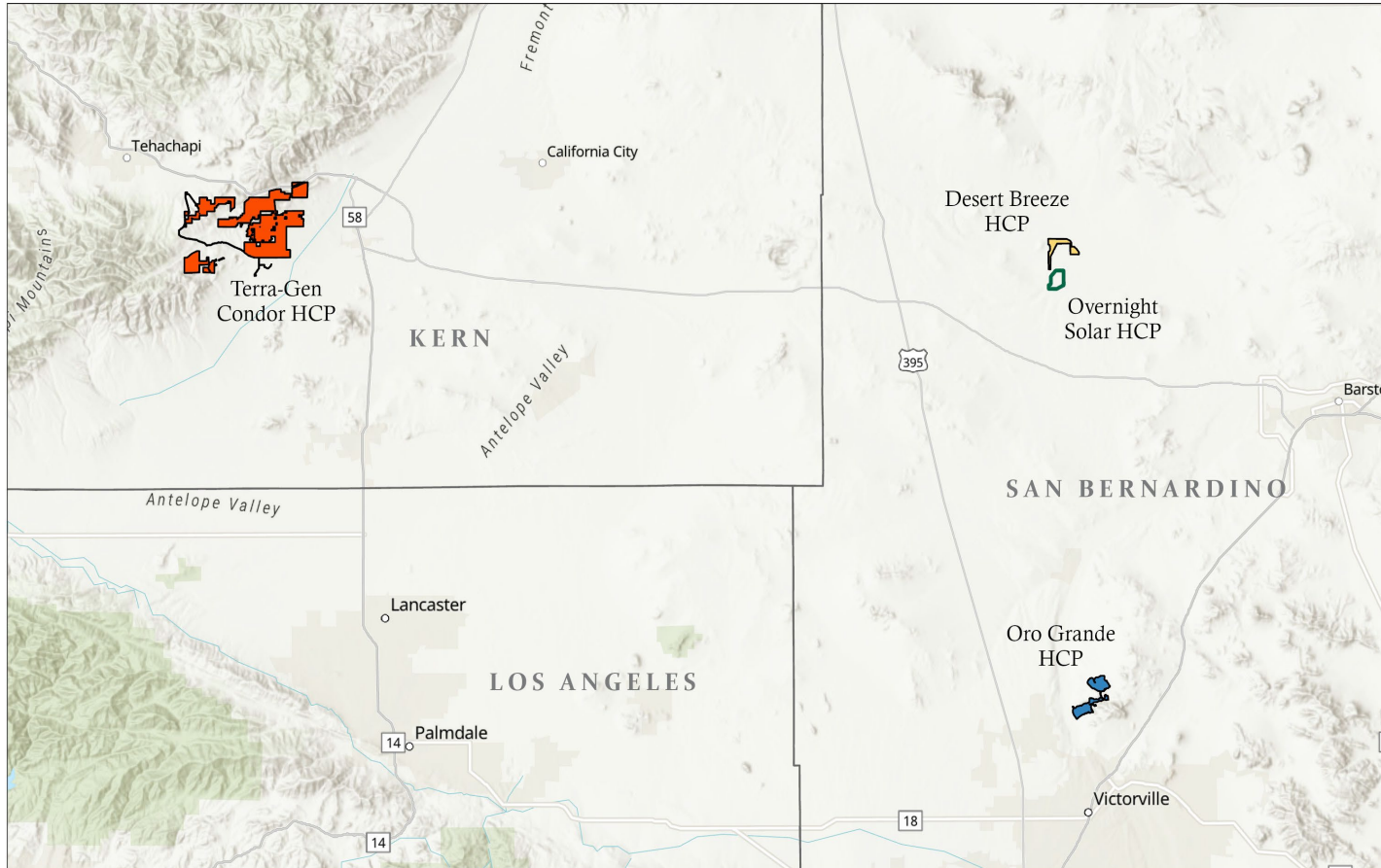
# HABITAT CONSERVATION PLANS IN PALM SPRINGS (MOJAVE) USFWS OFFICE'S JURISDICTION



U.S. Fish & Wildlife Service

Habitat Conservation Plans

Mojave Desert



Carlsbad Fish and Wildlife Office  
2177 Salk Avenue, Suite 250  
Carlsbad, CA 92008  
(760)431-9440

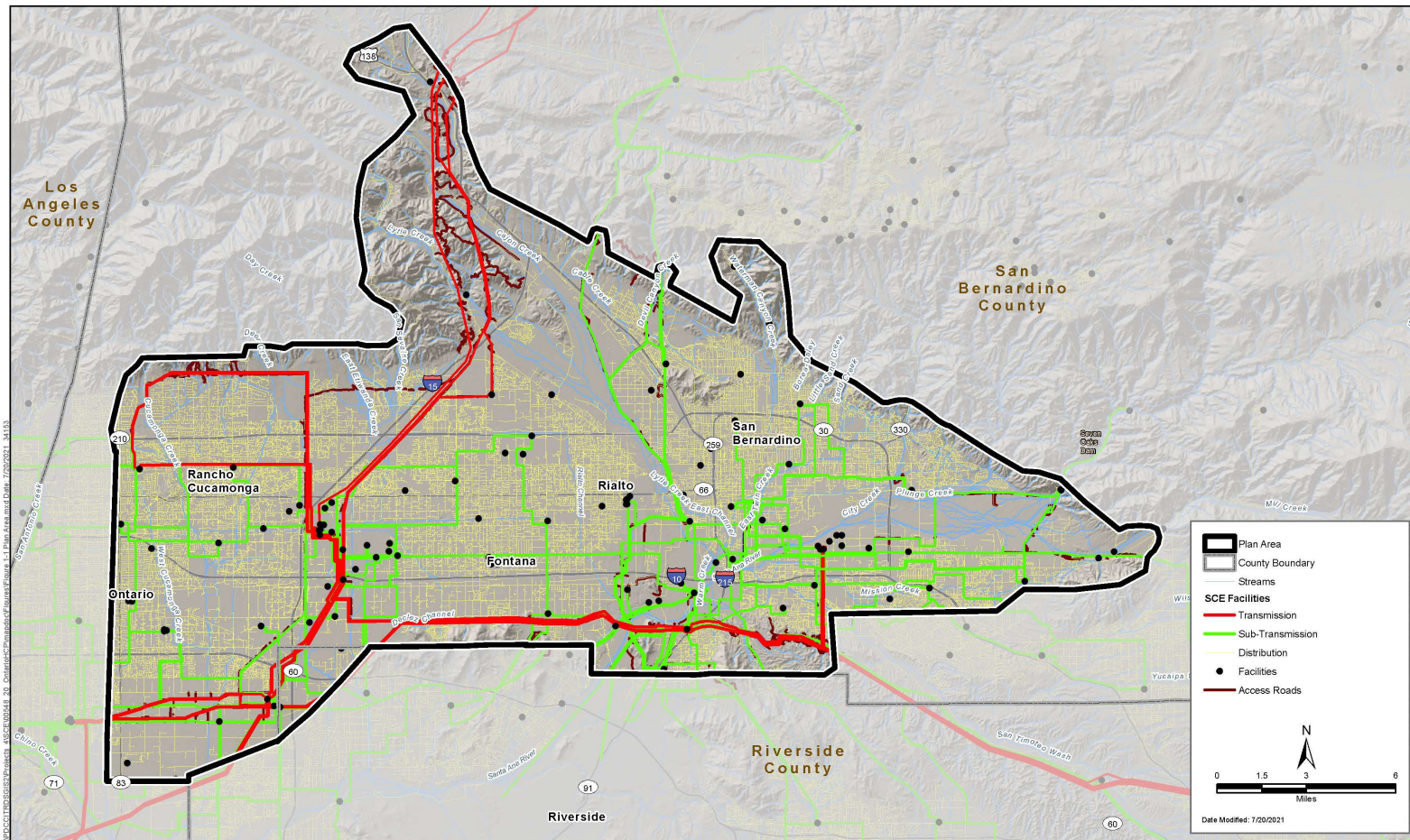
Data: U.S. Fish and Wildlife Service  
Basemap: ESRI World Terrain  
Date: 4/23/2024  
System/Jacob/Tribal/DeserHCPs/DeserHCPs.aprx



- **Desert Breeze Solar Project HCP:** Covers 677 acres located in the community of Hinkley, San Bernardino County. Applicants seeking an ITP for desert tortoise. HCP/EA available for public review shortly
- **Overnight Solar/Atlantica Sustainable Infrastructure HCP:** Covers 596 acres located in San Bernardino County. Applicants seeking an ITP for desert tortoise. HCP/EA are in draft stages.
- **CalPortland Oro Grande Cement Mining HCP:** Covers 285 acres located in unincorporated San Bernardino County in the Community of Oro Grande. Applicants seeking an ITP for desert tortoise. HCP/EA are in draft stages.
- **Terra-Gen Wind Energy Projects HCP:** Covers 11,378 acres located in the Tehachapi Wind Resource Area, Kern County. Applicants seeking an ITP for California condor associated with the operation of 14 existing wind energy projects. HCP/EA are in draft stages.



# HABITAT CONSERVATION PLAN IN WESTERN RIVERSIDE



**Figure 1-1  
Plan Area**

**Southern California Edison Operations and Maintenance Activities Low-Effect HCP: Approximately 253,000 acres located in the San Bernardino Valley. Applicants are seeking an ITP for the Delhi sands flower-loving fly, coastal California gnatcatcher, and San Bernardino kangaroo rat. Draft HCP is currently in review.**

# HABITAT CONSERVATION PLANS IN PROCESS CONTACT INFORMATION

- North San Diego County MSCP (NCCP/HCP): Dimitri Pappas ([dimitri\\_pappas@fws.gov](mailto:dimitri_pappas@fws.gov)) and Susan Wynn ([susan\\_wynn@fws.gov](mailto:susan_wynn@fws.gov))
- San Diego County Butterfly HCP: Eric Porter ([eric\\_porter@fws.gov](mailto:eric_porter@fws.gov)) and Susan Wynn ([susan\\_wynn@fws.gov](mailto:susan_wynn@fws.gov))
- Santee MSCP Subarea Plan (NCCP/HCP): Jonathan Snyder ([jonathan\\_d\\_snyder@fws.gov](mailto:jonathan_d_snyder@fws.gov))
- Sweetwater Authority NCCP/HCP: Eric Porter ([eric\\_porter@fws.gov](mailto:eric_porter@fws.gov))
- Alpine Park HCP: Eric Porter ([eric\\_porter@fws.gov](mailto:eric_porter@fws.gov))
- Desert Breeze Solar Project HCP: Jeremy Bisson ([jeremy\\_bisson@fws.gov](mailto:jeremy_bisson@fws.gov)) and Brooke Su ([brooke\\_su@fws.gov](mailto:brooke_su@fws.gov))
- Overnight Solar/Atlantica Sustainable Infrastructure HCP: Peter Sanzenbacher ([peter\\_sanzenbacher@fws.gov](mailto:peter_sanzenbacher@fws.gov))
- CalPortland Oro Grande Cement Mining HCP: Richard Tung ([richard\\_tung@fws.gov](mailto:richard_tung@fws.gov)) and Brooke Su ([brooke\\_su@fws.gov](mailto:brooke_su@fws.gov))
- Terra-Gen Wind Energy Projects HCP: Peter Sanzenbacher ([peter\\_sanzenbacher@fws.gov](mailto:peter_sanzenbacher@fws.gov))
- Southern California Edison Operations and Maintenance Activities Low-Effect HCP: Amanda Swaller ([amanda\\_swaller@fws.gov](mailto:amanda_swaller@fws.gov))