



U.S. Fish & Wildlife Service

Red Pine Wind Project

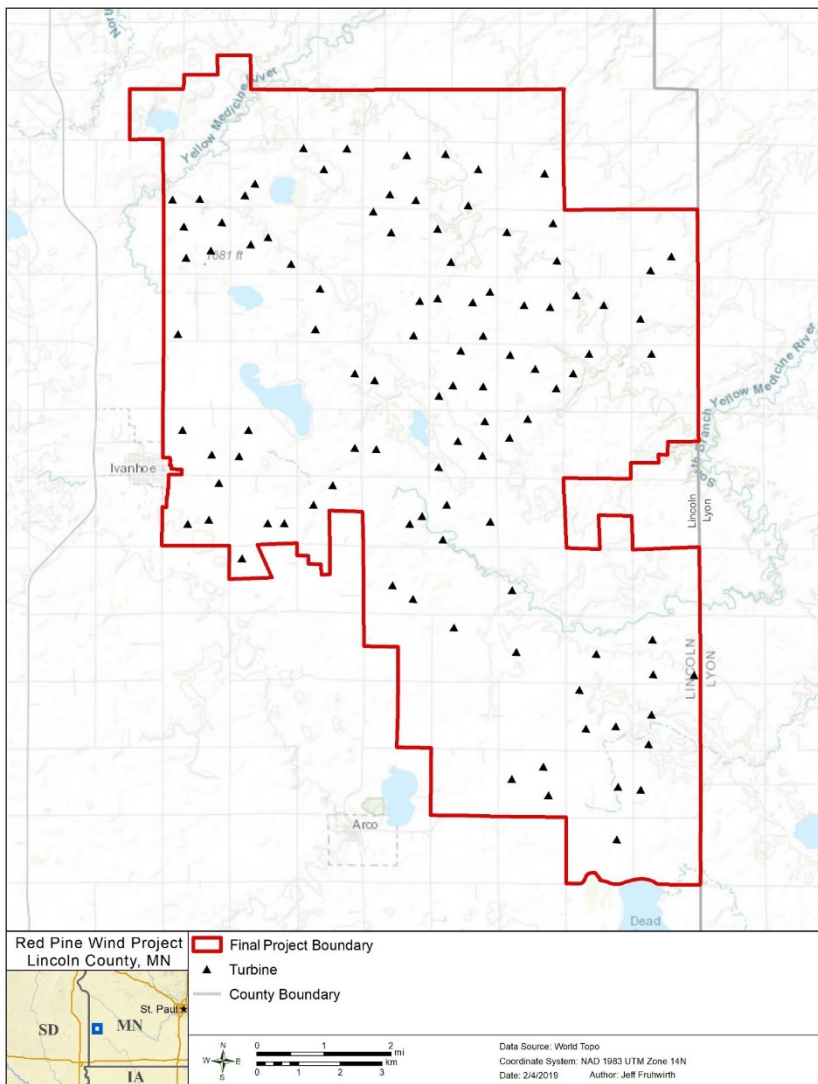
Project Description

Red Pine Wind Project, LLC, a company held under EDF Renewables Development, Inc., (Applicant) has constructed and is currently operating the Red Pine Wind Project (Project) located on the eastern boundary of Lincoln County, Minnesota, near the towns of Ivanhoe and Arco. The Project consists of 100 turbines, producing up to 200 megawatts of electricity. The Project area contains approximately 44,650 acres. The Project interconnects to the Hawk's Nest Lake substation via an approximately 700-foot-long 345-kilovolt overhead transmission line and transmits power into the Midwest Independent System Operator grid.

Potential Eagle Impacts

There may be incidental bald eagle mortality due to the operation of the Project. Take, including killing of eagles, is prohibited by the Bald and Golden Eagle Protection Act without a permit. The U.S. Fish and Wildlife Service (Service) has been delegated the authority to issue eagle take permits, where the incidental take is associated with, but not the purpose of, an otherwise lawful activity, and is determined to be compatible with the preservation of eagles. The Service will issue incidental take permits for such take only after an applicant has committed to undertake all practical measures to avoid and minimize such take and mitigate anticipated take in accordance with the regulations.

We received an application for a 24-year incidental take permit from the Applicant for the Project. The Applicant has provided an Eagle Conservation Plan that summarizes Project design, construction, and operational measures taken to avoid and minimize impacts to eagles. The Service has evaluated risks to eagles at the Project, and estimates that up to 13 bald eagles may be taken over each 5-year period during the operation of the Project, for a total predicted take of up to 63 bald eagles during the 24-year

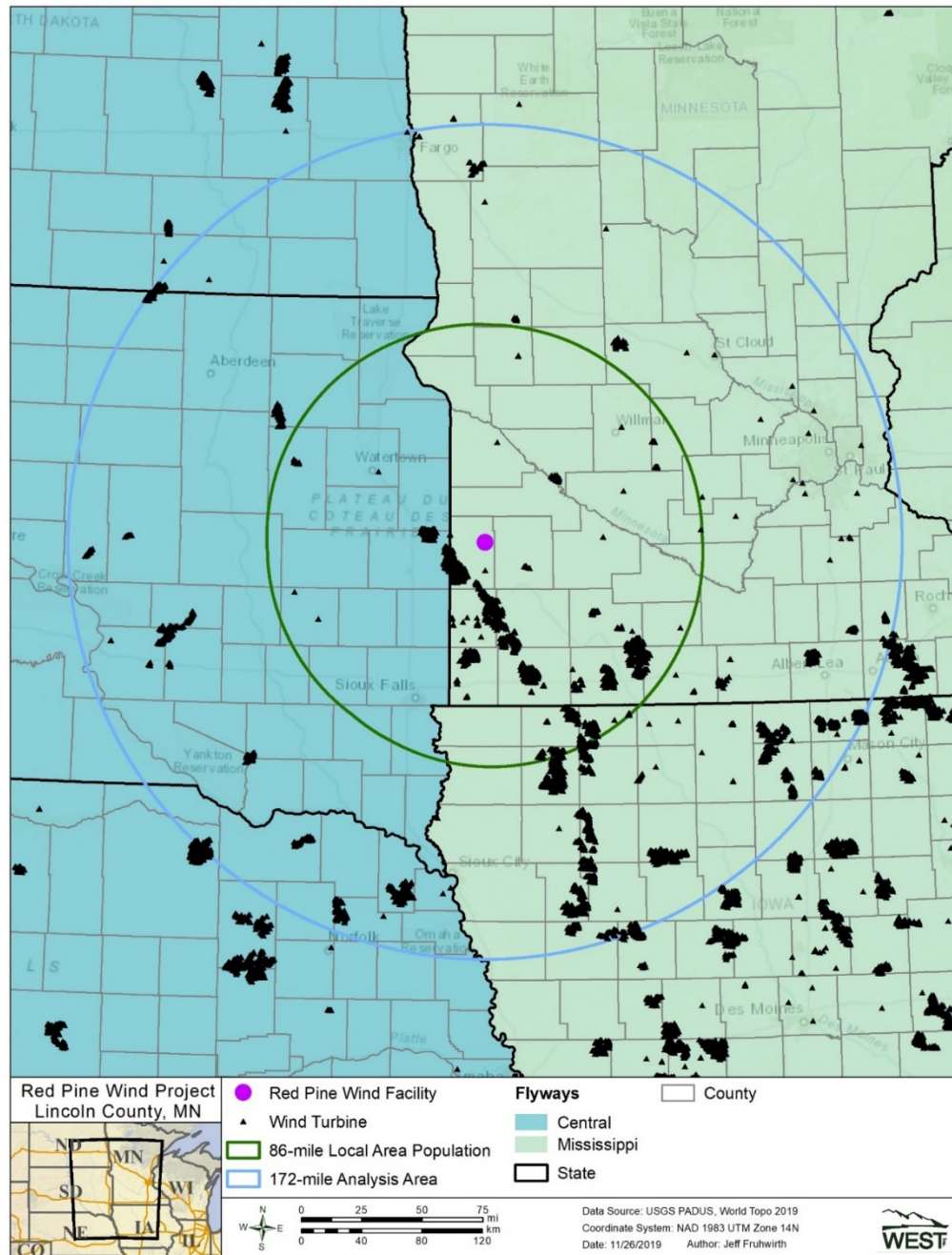


permit period. This take estimate will be revisited at 5-year intervals and updated with relevant monitoring information.

Project Review

The Service has an independent statutory responsibility under the National Environmental Policy Act (NEPA) to evaluate its own actions related to the Project, namely the possible issuance of an incidental take permit. A draft Environmental Assessment (EA) has been prepared to analyze the impacts associated with the proposed action. The EA evaluates the impact of issuing (and not issuing) an eagle take permit for the existing Project. We are providing the opportunity to comment on the EA; no permit decision will be made until after the NEPA process is complete.

U.S. Fish & Wildlife Service



Should additional information be needed, please contact us at:

Midwest Migratory Bird Program
U.S. Fish and Wildlife Service
5600 American Blvd. West, Suite 990
Bloomington, MN 55437
midwesteagle@fws.gov
612-713-5436

The ECP and draft EA are being posted on-line to allow for public comment on this process. Both documents can be found at <https://www.fws.gov/media/red-pine-wind-facility-eagle-take-nepa-analysis>.