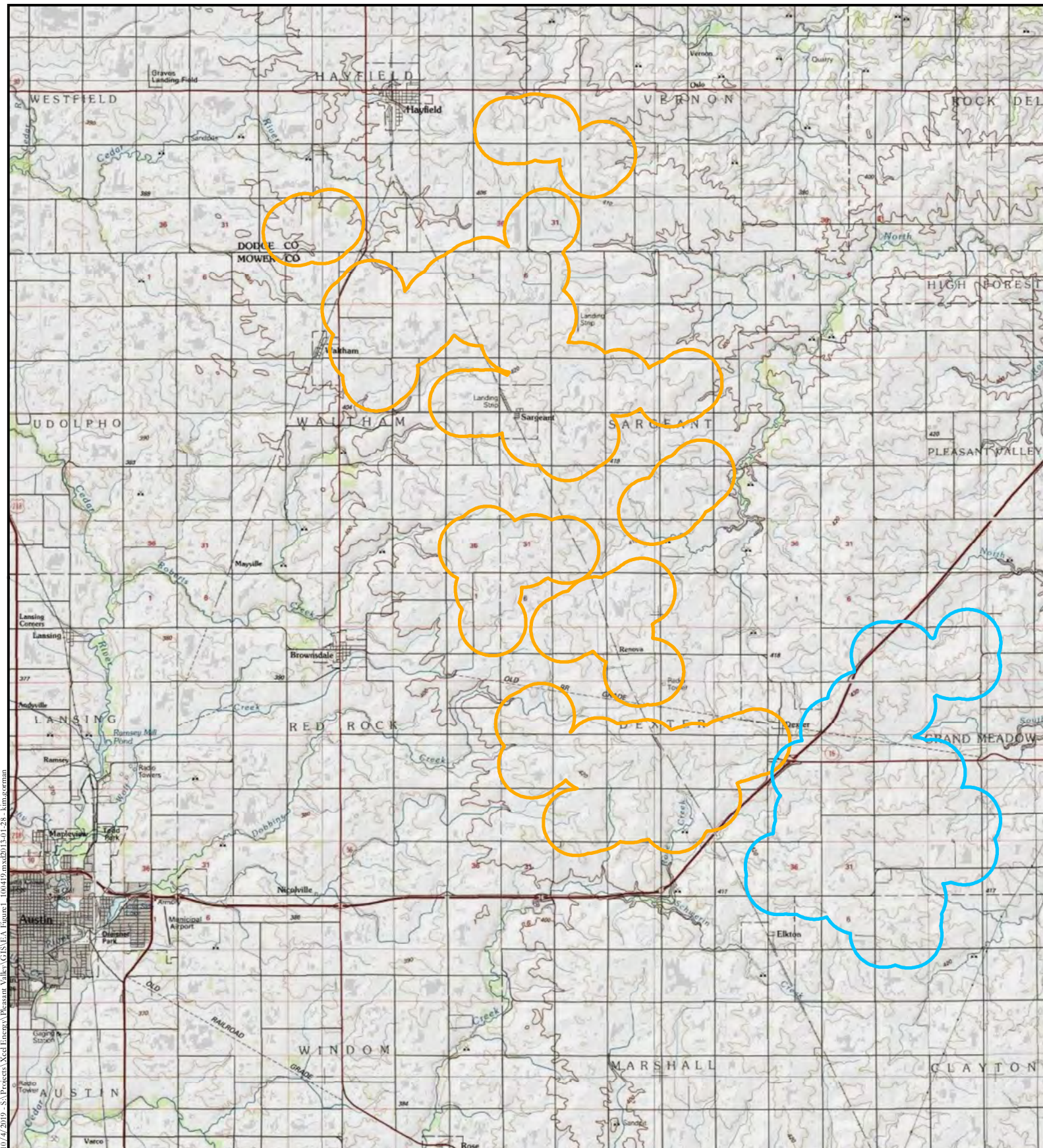


Figures

This page intentionally left blank



Source: Map adapted from data provided by USA Topo Maps and Project data provided by Xcel Energy.



- Grand Meadow Project Footprint
- Pleasant Valley Project Footprint

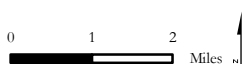
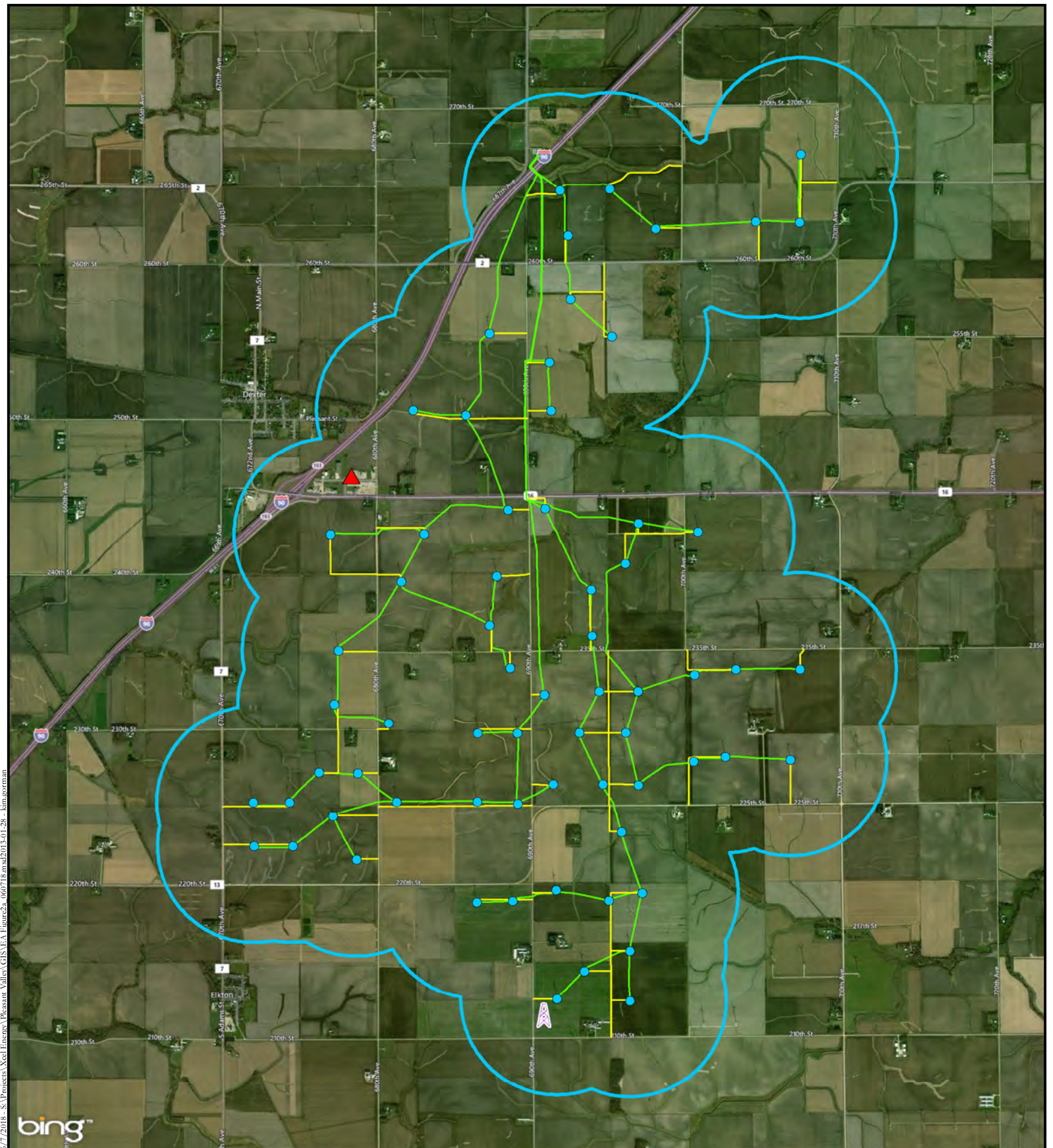


Figure 1 - Project Vicinity
Grand Meadow and
Pleasant Valley Wind Farms
Dodge and Mower Counties, Minnesota





Source: Map adapted from data provided by Bing Hybrid Maps and Project data provided by Xcel Energy.









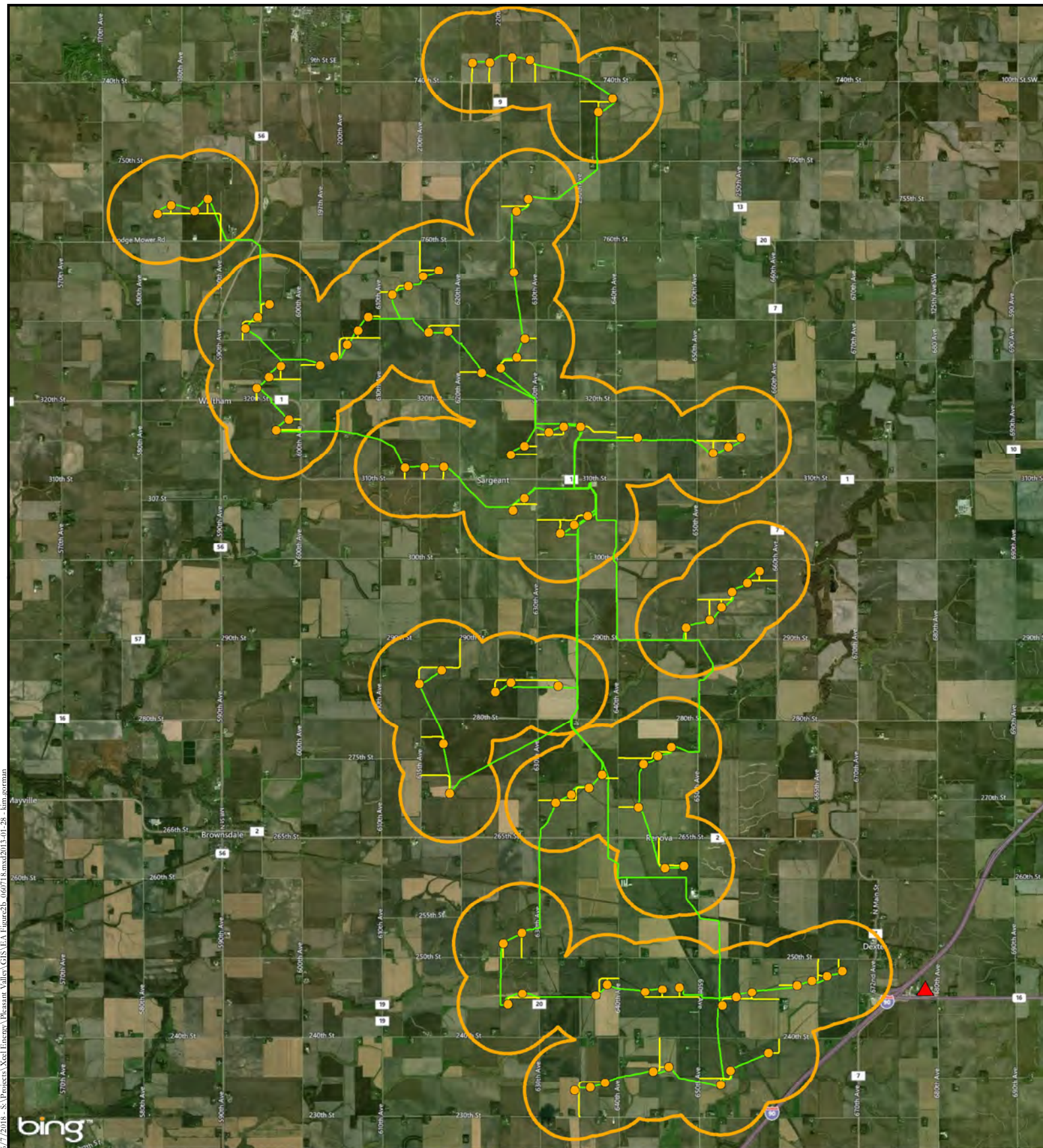
-  Operations and Maintenance Building
-  Meteorological Tower
-  Grand Meadow Turbine
-  Grand Meadow Access Road
-  Grand Meadow Underground Collection
-  Grand Meadow Project Footprint

Figure 2a - Wind Farm Facilities
Grand Meadow Wind Farm
Mower County, Minnesota





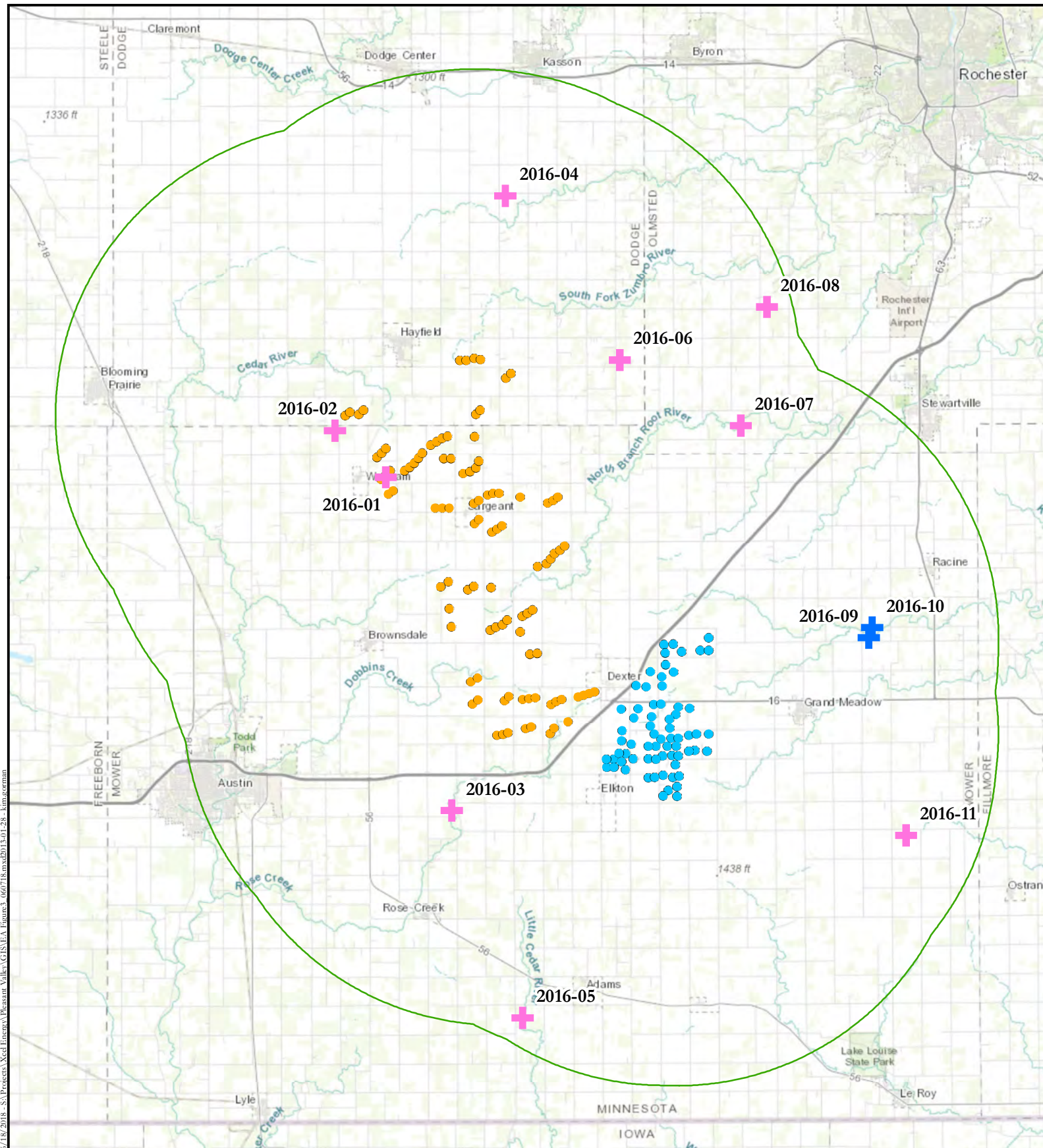
Source: Map adapted from data provided by Bing Hybrid Maps and Project data provided by Xcel Energy.



- ▲ Operations and Maintenance Building
- Pleasant Valley Turbine
- Pleasant Valley Access Road
- Pleasant Valley Underground Collection
- Pleasant Valley Project Footprint

Figure 2b - Wind Farm Facilities
Pleasant Valley Wind Farm
Dodge and Mower Counties, Minnesota





6/18/2018 - S:\Projects\Xcel Energy\Pleasant Valley\GIS\EA_Figure3_060718.mxd(2013-01-28) - kim.gorman

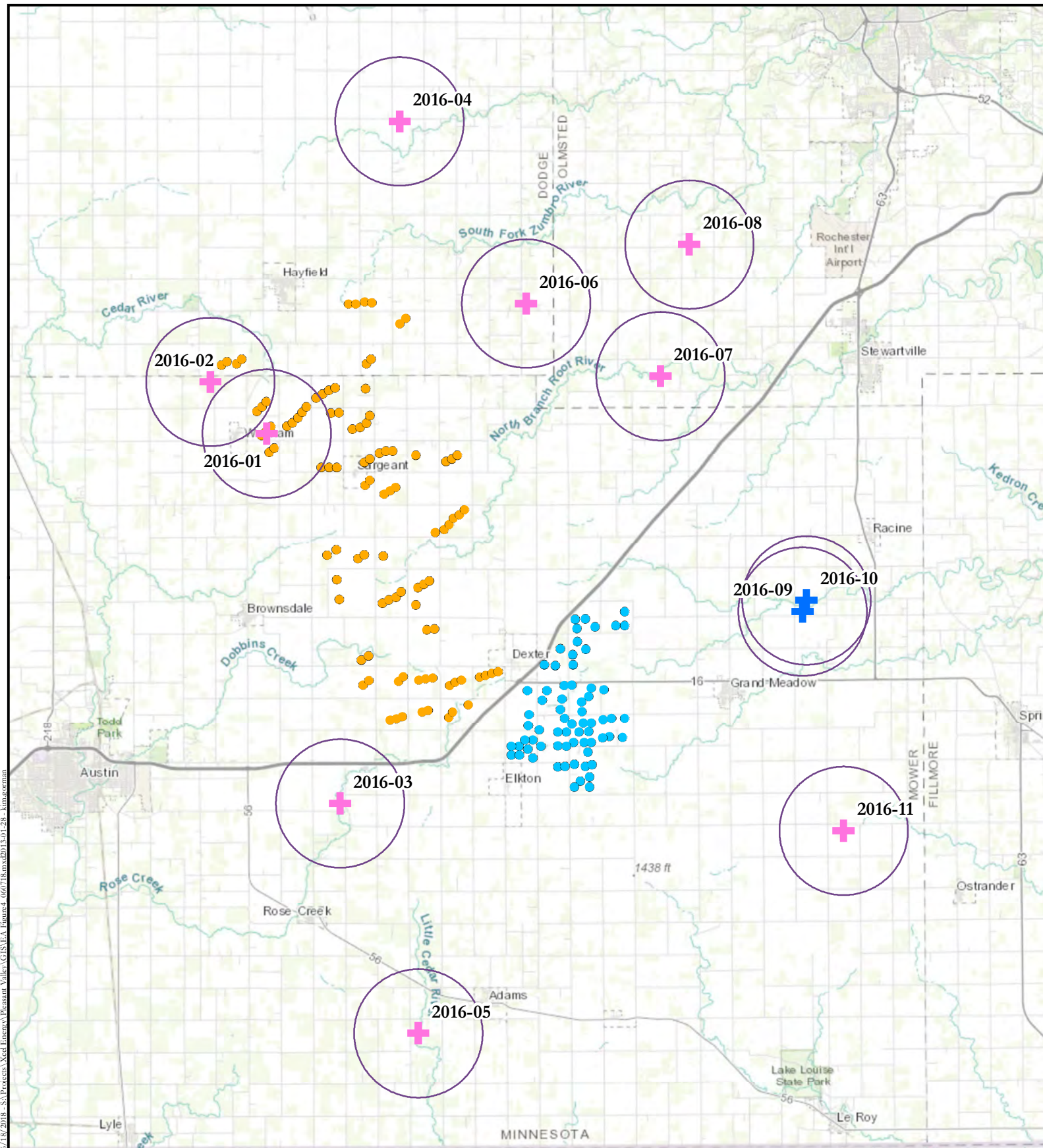
Source: Map adapted from data provided by World Topo Map and Project data provided by Xcel Energy.



- 2016 Stick Nest Location
Species, Spring 2016 Status**
- + BAEA, Occupied Active
 - + BAEA, Occupied Inactive
 - Grand Meadow Turbine
 - Pleasant Valley Turbine
 - 10-mile Radius of Project Turbines

Figure 3 - Aerial Survey Boundary and Identified Nests
Grand Meadow and
Pleasant Valley Wind Farms
Dodge and Mower Counties, Minnesota



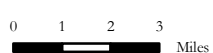


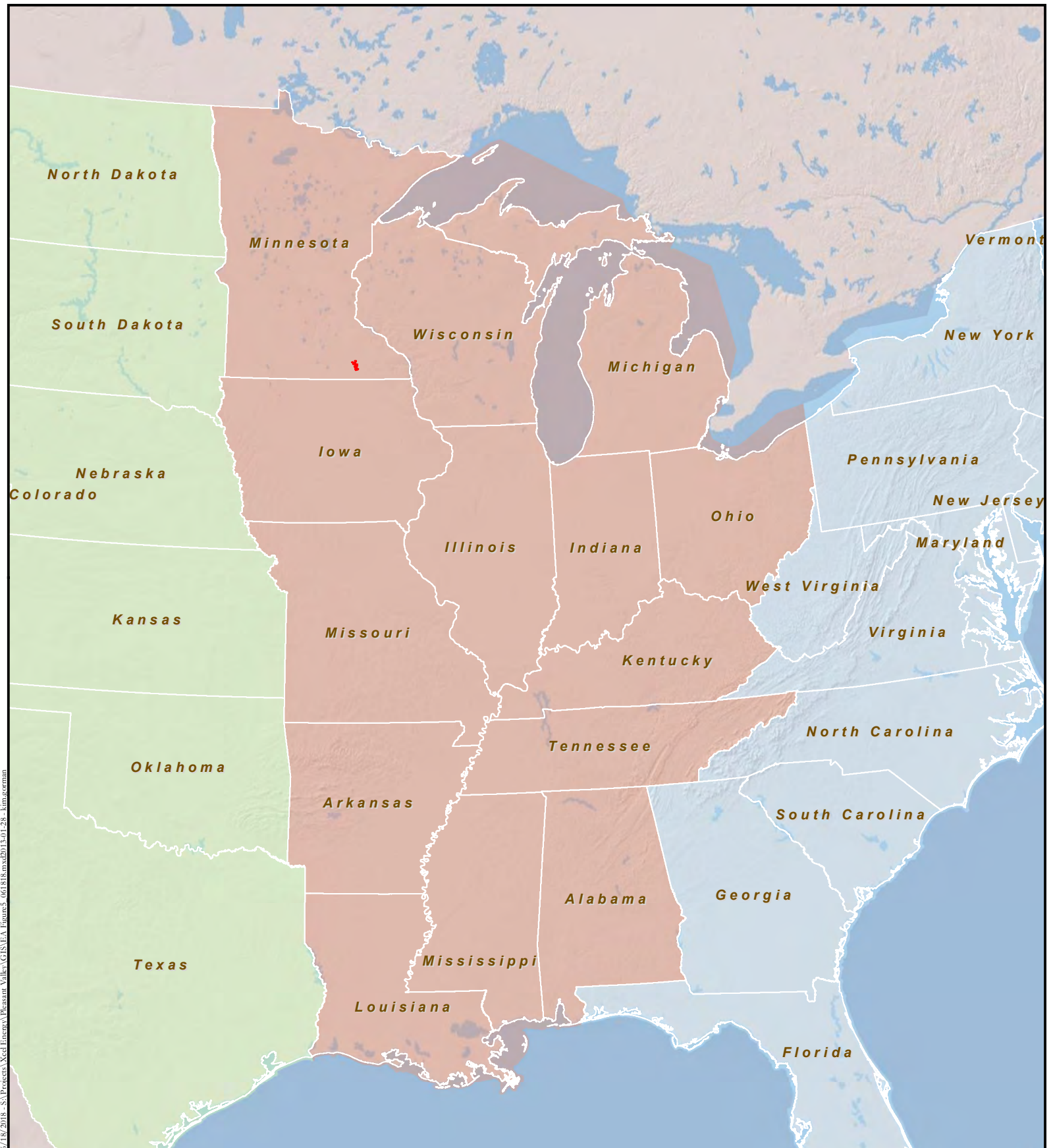
Source: Map adapted from data provided by World Topo Map and Project data provided by Xcel Energy.



- 1/2 Mean Internest Distance
- 2016 Stick Nest Location**
Species, Spring 2016 Status
- ✚ BAEA, Occupied Active
- ✚ BAEA, Occupied Inactive
- Grand Meadow Turbine
- Pleasant Valley Turbine

Figure 4 - 1/2 Mean Inter-Nest Distance
Grand Meadow and
Pleasant Valley Wind Farms
Dodge and Mower Counties, Minnesota





6/18/2018 - S:\Projects\Xcel Energy\Pleasant Valley\GIS\EA_Figures - 061818.mxd(2013-01-28 - kim.gorman)

Source: Map adapted from data provided by World Topo Map and Project data provided by Xcel Energy.



- Eagle Management Unit**
- Atlantic Flyway
 - Central Flyway
 - Mississippi Flyway
 - Pleasant Valley Grand Meadow Wind Farms

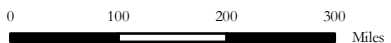


Figure 5 - Eagle Management Units
Grand Meadow and
Pleasant Valley Wind Farms
Dodge and Mower Counties, Minnesota

