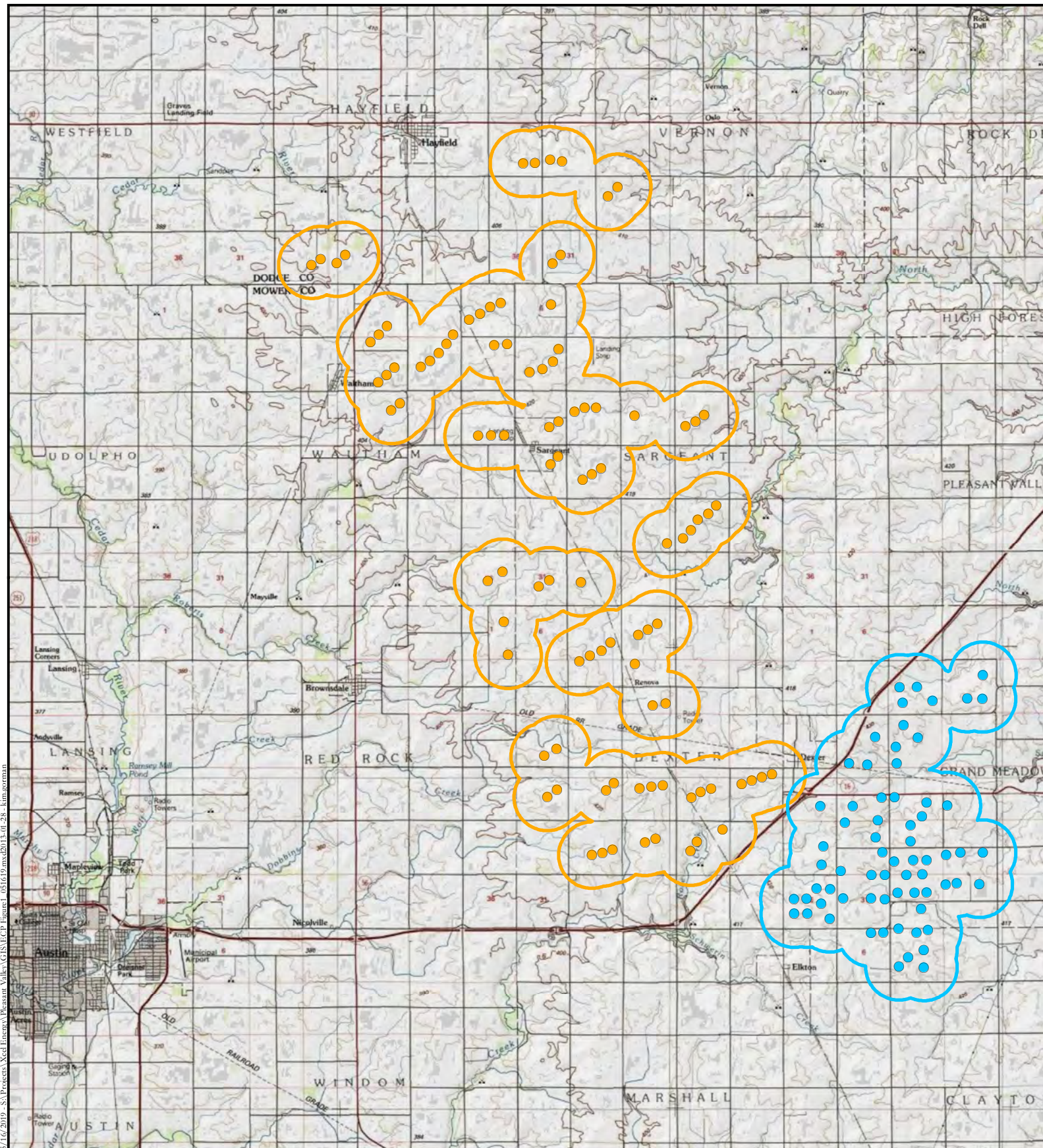


APPENDIX A: FIGURES

This page intentionally left blank



5/16/2019 - S:\Projects\Xcel Energy\Pleasant Valley\GIS\MECP Figure1_051619.mxd 13.40.28 - kimjoorman

Source: Map adapted from data provided by USA Topo Maps and Project data provided by Xcel Energy.



- Grand Meadow Turbine
- Pleasant Valley Turbine
- Grand Meadow Project Footprint
- Pleasant Valley Project Footprint

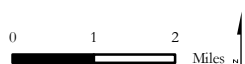
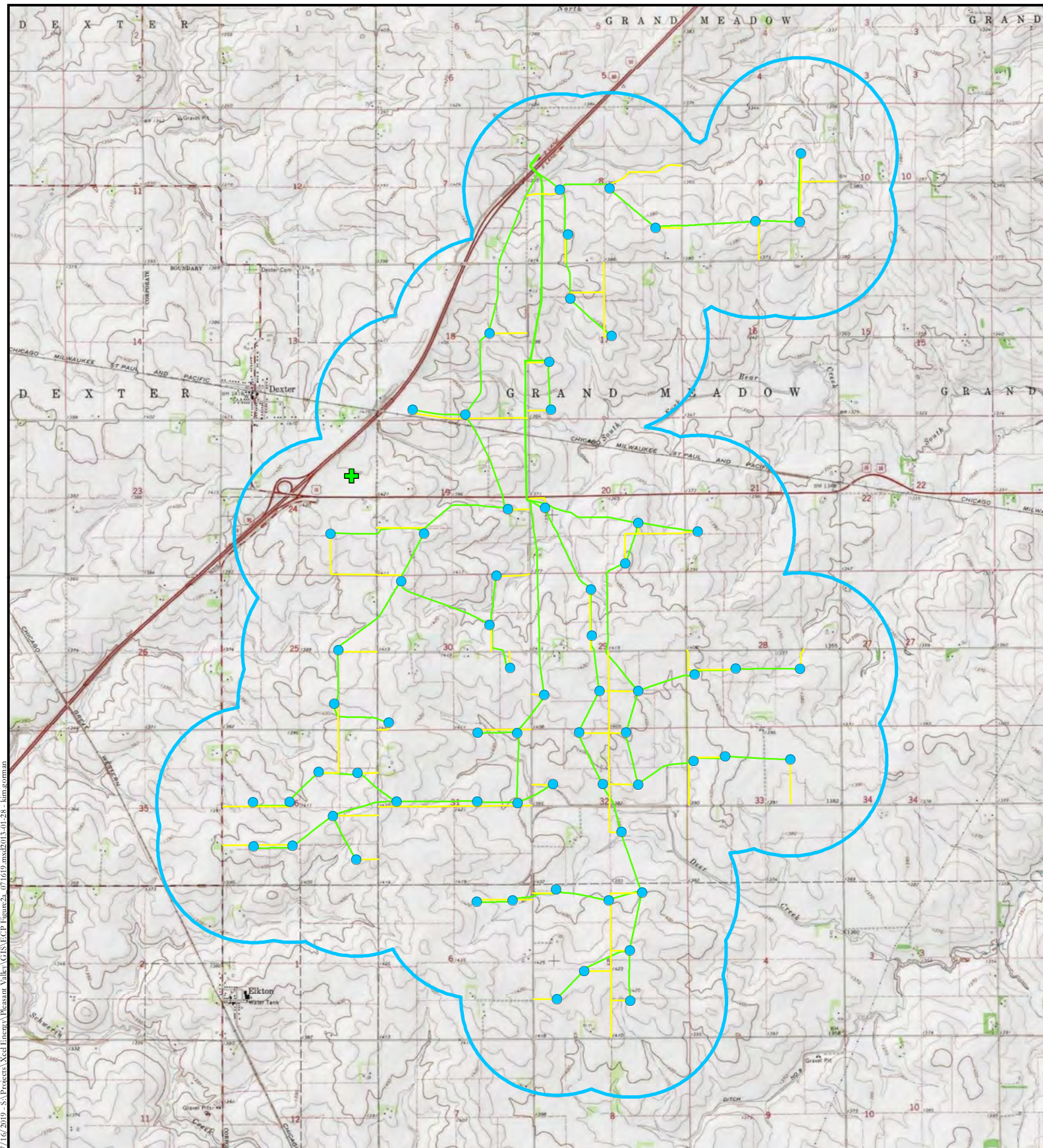


Figure 1 - Wind Farm Vicinity
Grand Meadow and
Pleasant Valley Wind Farms
Dodge and Mower Counties, Minnesota





7/10/2019 - S:\Projects\Xcel Energy\Pleasant Valley\GIS\Map\Figure2a_071619.mxd(2013-01-28 - km.com.mn)

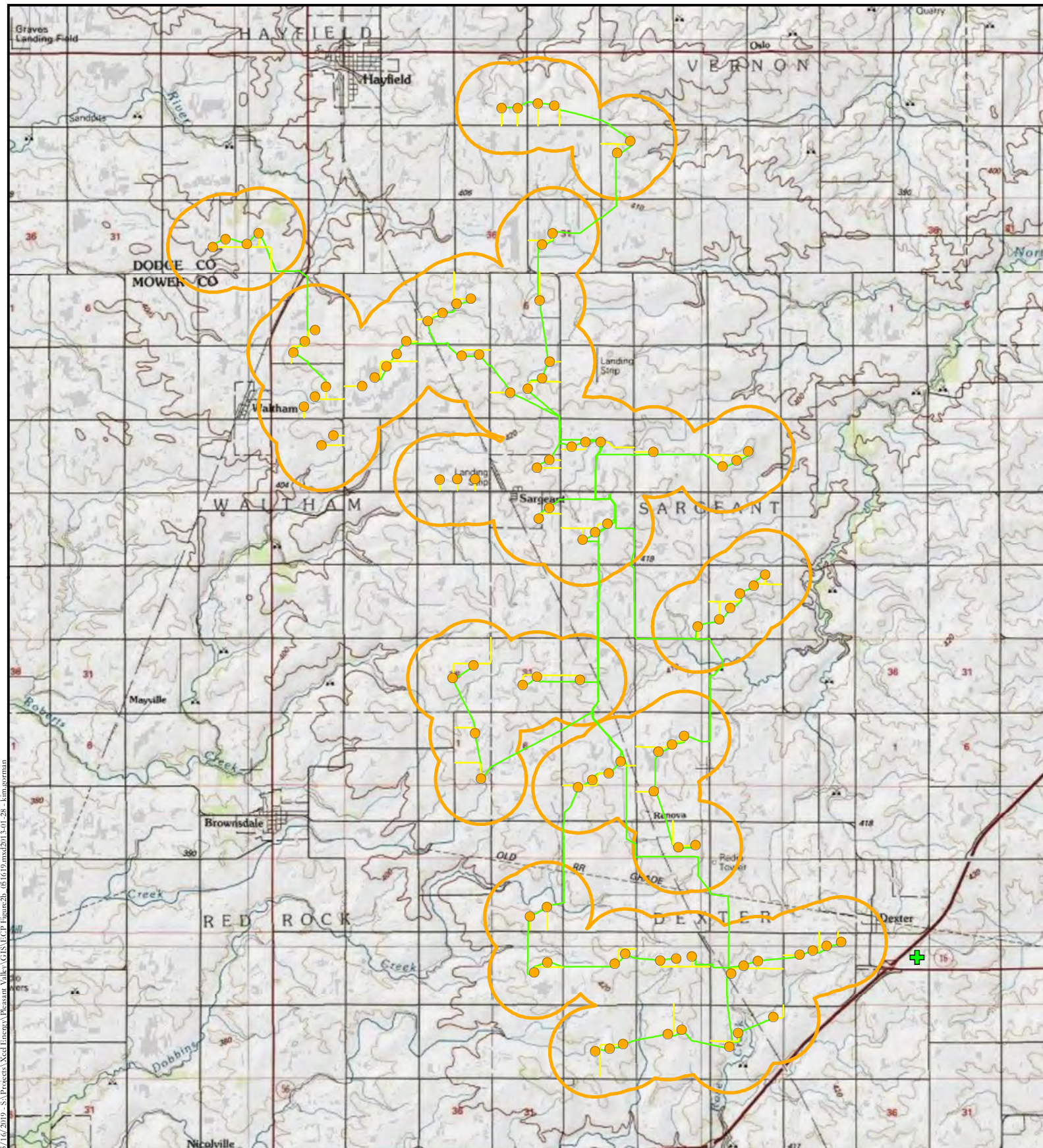
Source: Map adapted from data provided by USA Topo Maps and Project data provided by Xcel Energy.



- Grand Meadow Turbine
- Grand Meadow Project Footprint
- Grand Meadow Access Road
- Grand Meadow Underground Collection
- + Operations and Maintenance Building

Figure 2a - Wind Farm Facilities
Grand Meadow Wind Farm
Dodge and Mower Counties, Minnesota





5/16/2019 - S:\Projects\Xcel Energy\Pleasant Valley\GIS\FECP_Figure2b_051619.mxd(2013-01-28 - km.gorman)

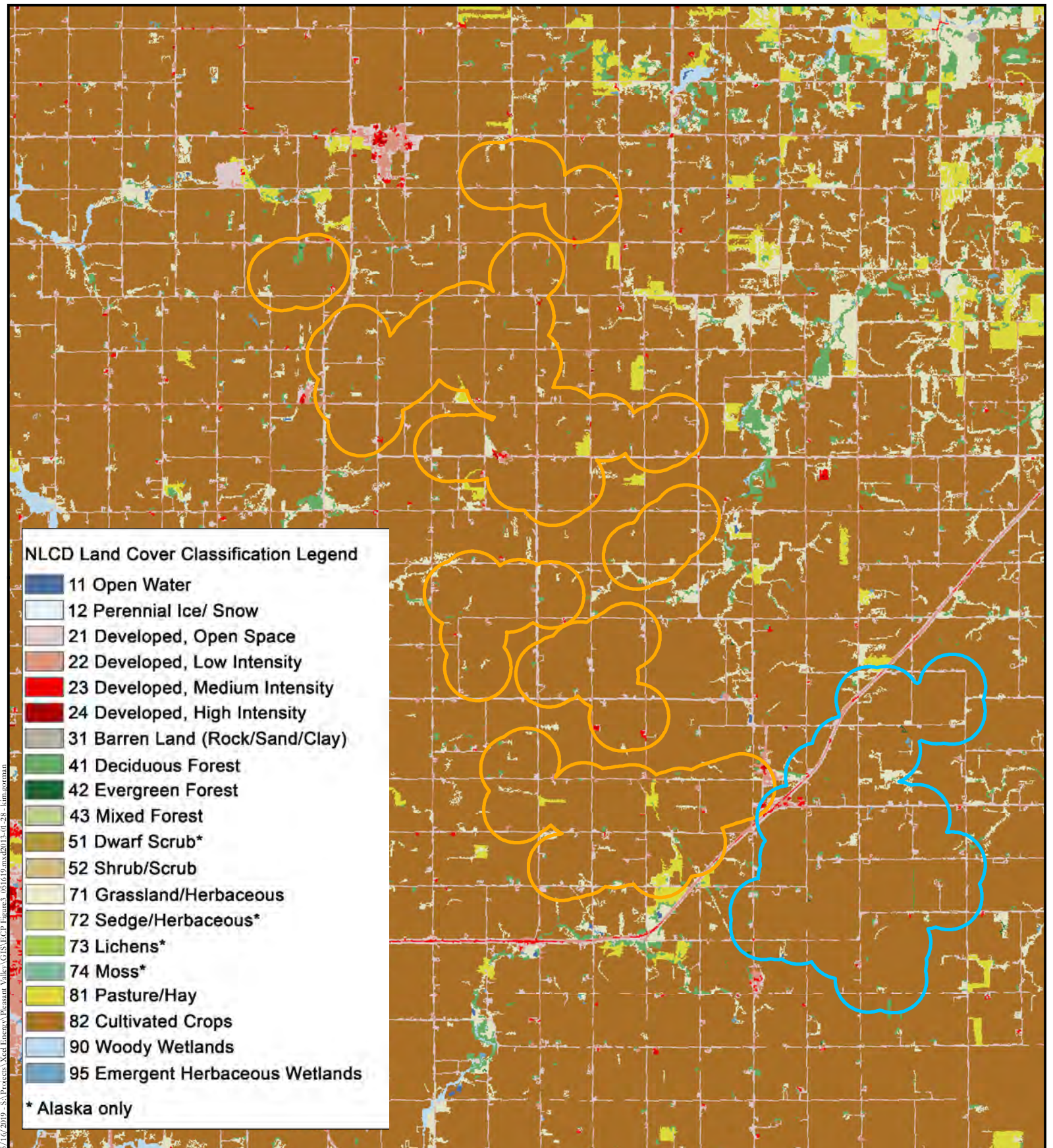
Source: Map adapted from data provided by USA Topos and Project data provided by Xcel Energy.



- Pleasant Valley Turbine
- Pleasant Valley Access Road
- Pleasant Valley Underground Collection
- ✚ Operations and Maintenance Building
- Pleasant Valley Project Footprint

Figure 2b - Wind Farm Facilities
Pleasant Valley Wind Farm
Dodge and Mower Counties, Minnesota





Source: Map adapted from data provided by NLCD 2011 and Project data provided by Xcel Energy.

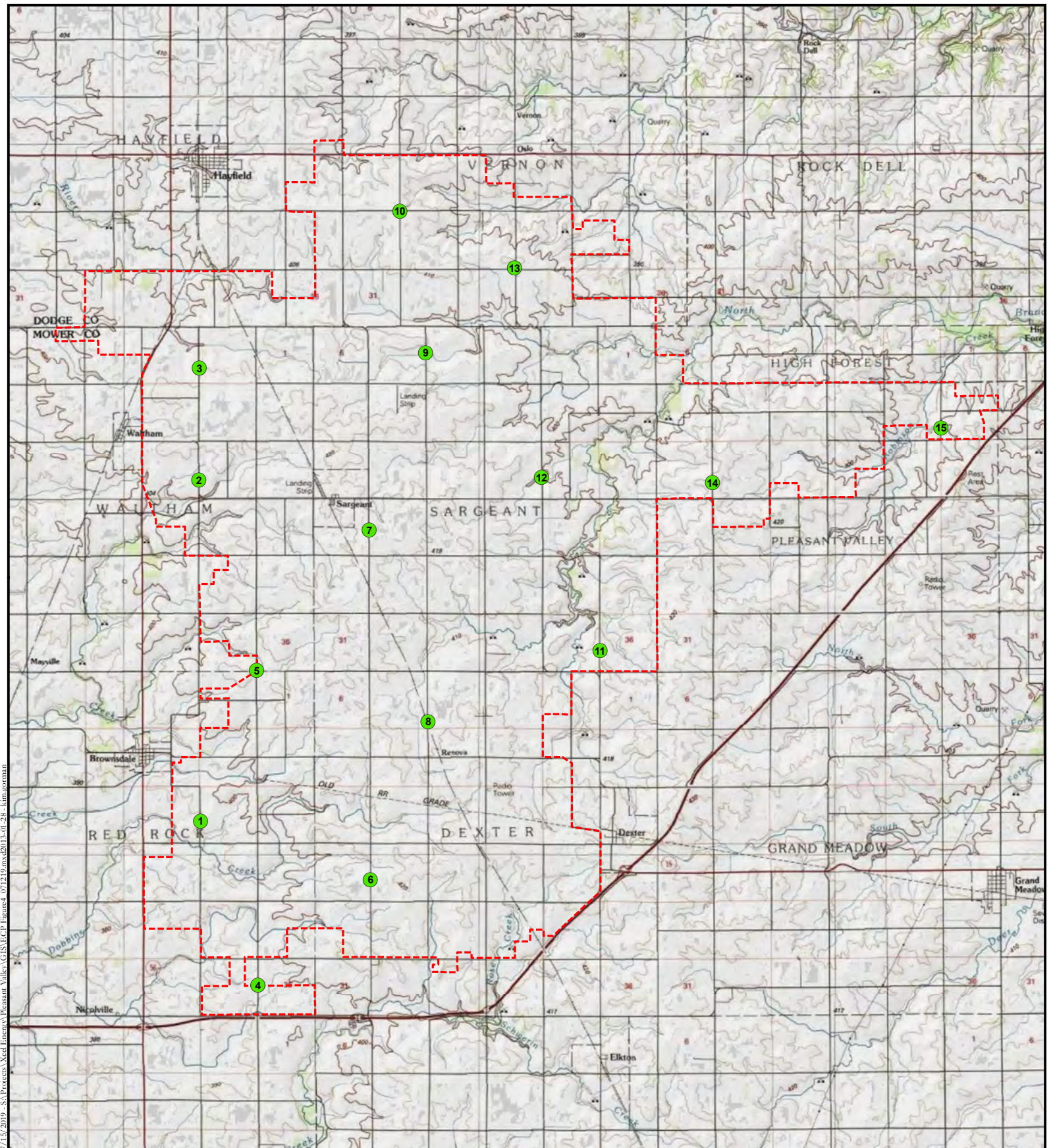


- Grand Meadow Project Footprint
- Pleasant Valley Project Footprint

Figure 3 - Land Cover
Grand Meadow and
Pleasant Valley Wind Farms
Dodge and Mower Counties, Minnesota

0 1 2 Miles



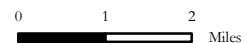


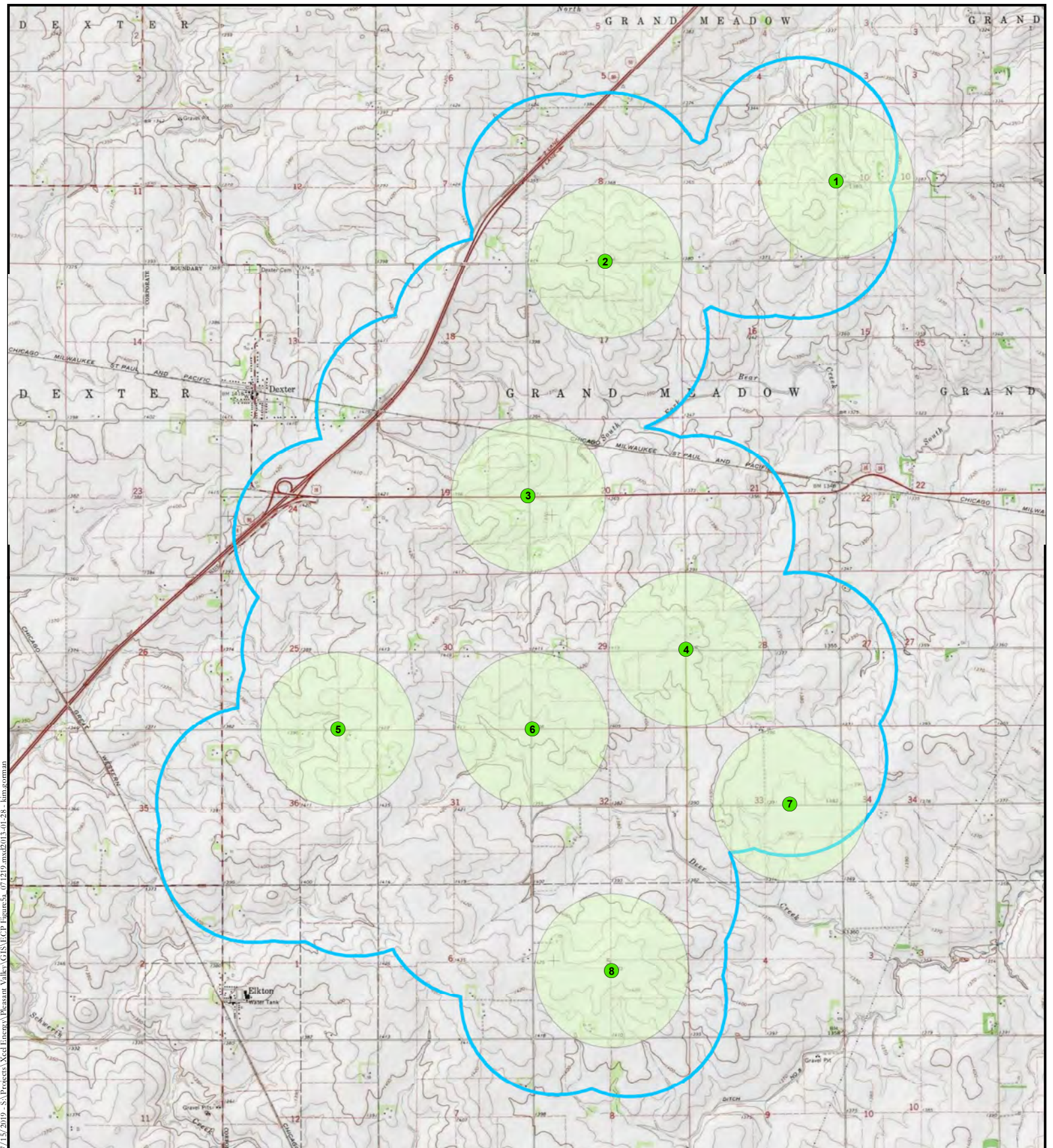
7/15/2019 - S:\Projects\Xcel Energy\Pleasant Valley\GIS\VECP_Figure4_071219.mxd 2013-01-28 - kimjoorman

Source: Map adapted from data provided by NLCD 2011 and Project data provided by Xcel Energy.

- Avian Point Count Locations
- ⬮ Pleasant Valley Project Boundary

Figure 4 - 2009-2010 Avian and Eagle Point Count Locations
Pleasant Valley Wind Farm
Dodge and Mower Counties, Minnesota





7/15/2019 - S:\Projects\Xcel Energy\Pleasant Valley\GIS\FCP Figure5a_071219.mxd(2013.01.28 - km.com.mn)

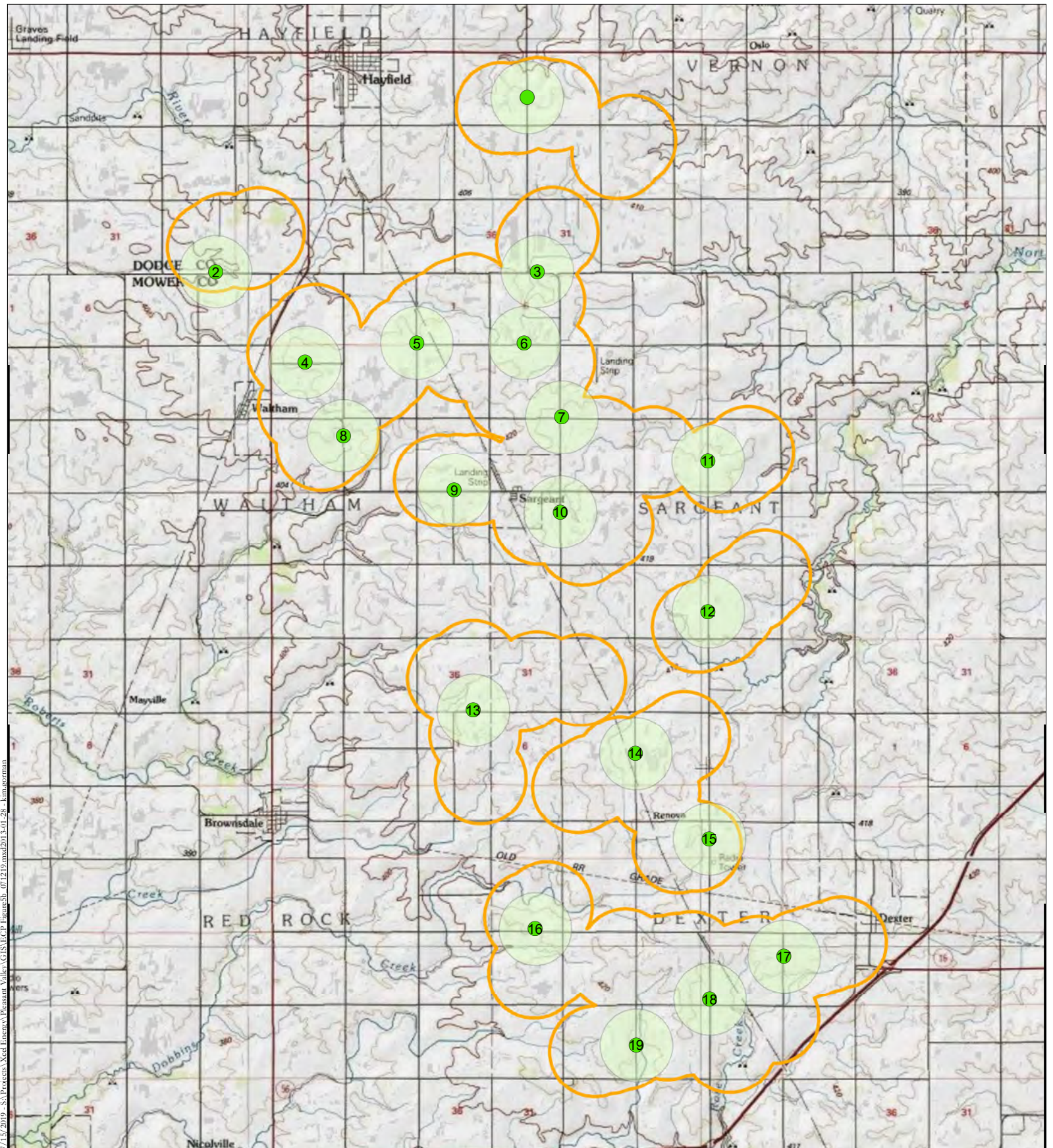
Source: Map adapted from data provided by USA Topos and Project data provided by Xcel Energy.



- Grand Meadow Point Count Location
- Grand Meadow Project Footprint
- 800-meter Radius

Figure 5a - 2016-2017 Eagle Point Count Locations
Grand Meadow Wind Farm
Mower County, Minnesota





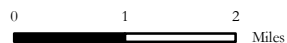
7/12/2019 - S:\Projects\Xcel Energy\ Pleasant Valley\GIS\Map\2013-01-26 - km.german

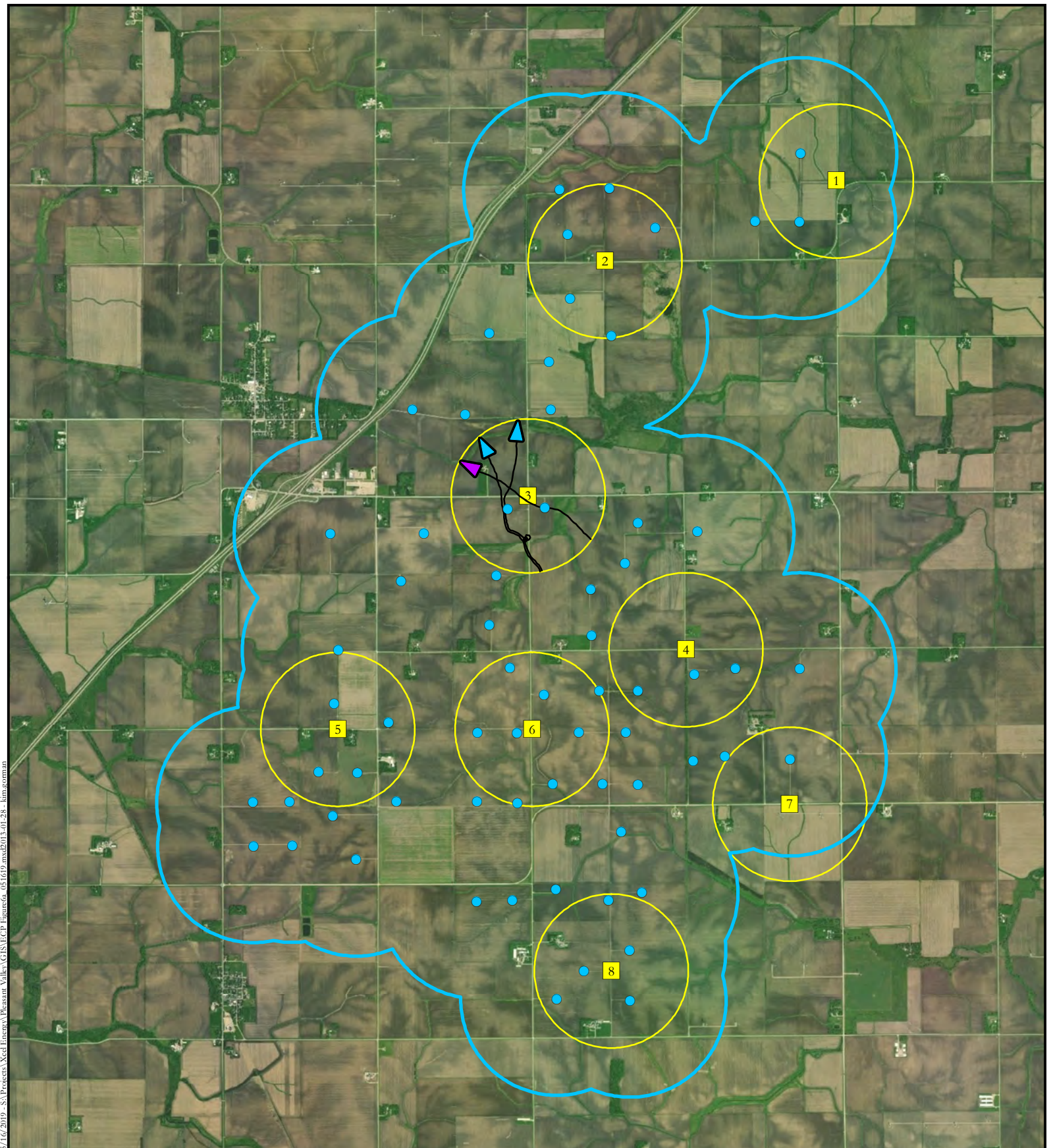
Source: Map adapted from data provided by USA Topos and Project data provided by Xcel Energy.



- Pleasant Valley Point Count Location
- 800-meter Radius
- Pleasant Valley Project Footprint

Figure 5b - 2016-2017 Eagle Point Count Locations
Pleasant Valley Wind Farm
Dodge and Mower Counties, Minnesota





5/16/2019 - S:\Projects\Xcel Energy\Pleasant Valley\GIS\VECP\Figure06_051619.mxd 2013-01-28 - km room.mxd

Source: Map adapted from data provided by ESRI World Imagery and Project data provided by Xcel Energy.



- Eagle Flight Path Observation Date**
- ▶ 4/4/2016
 - ▶ 2/6/2017
 - Eagle Survey Location
 - 800-meter Radius
 - Grand Meadow Turbine
 - Grand Meadow Project Footprint

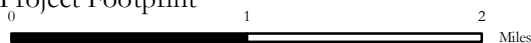
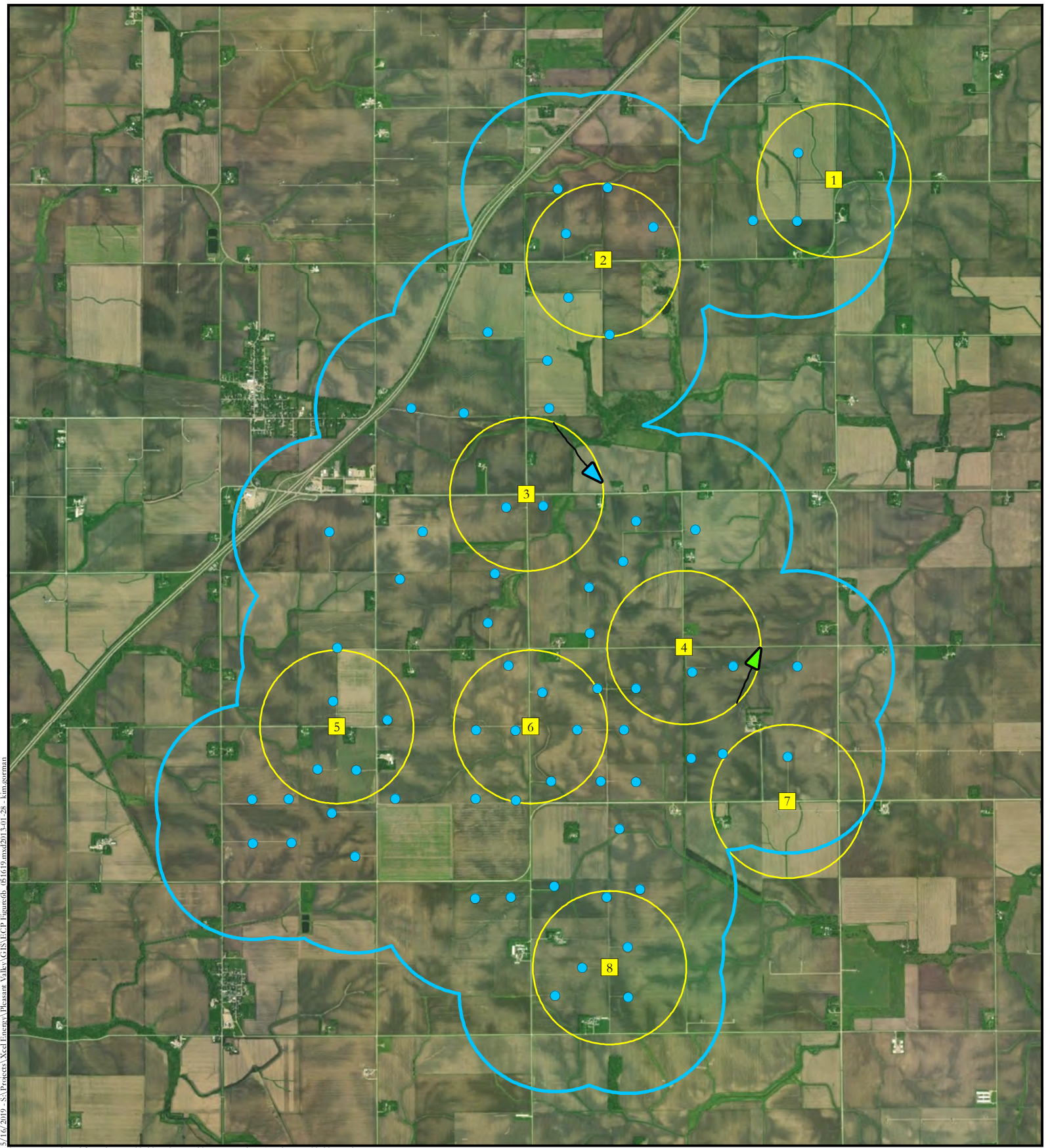


Figure 6a - Bald Eagle Flight Paths
Below 200 Meters with Survey Locations
Grand Meadow Wind Farm
Mower County, Minnesota



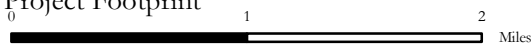
5/16/2019 - S:\Projects\Xcel Energy\Pleasant Valley\GIS\VECP\Figure06b_061619.mxd2013-01-28 - kim.gorman

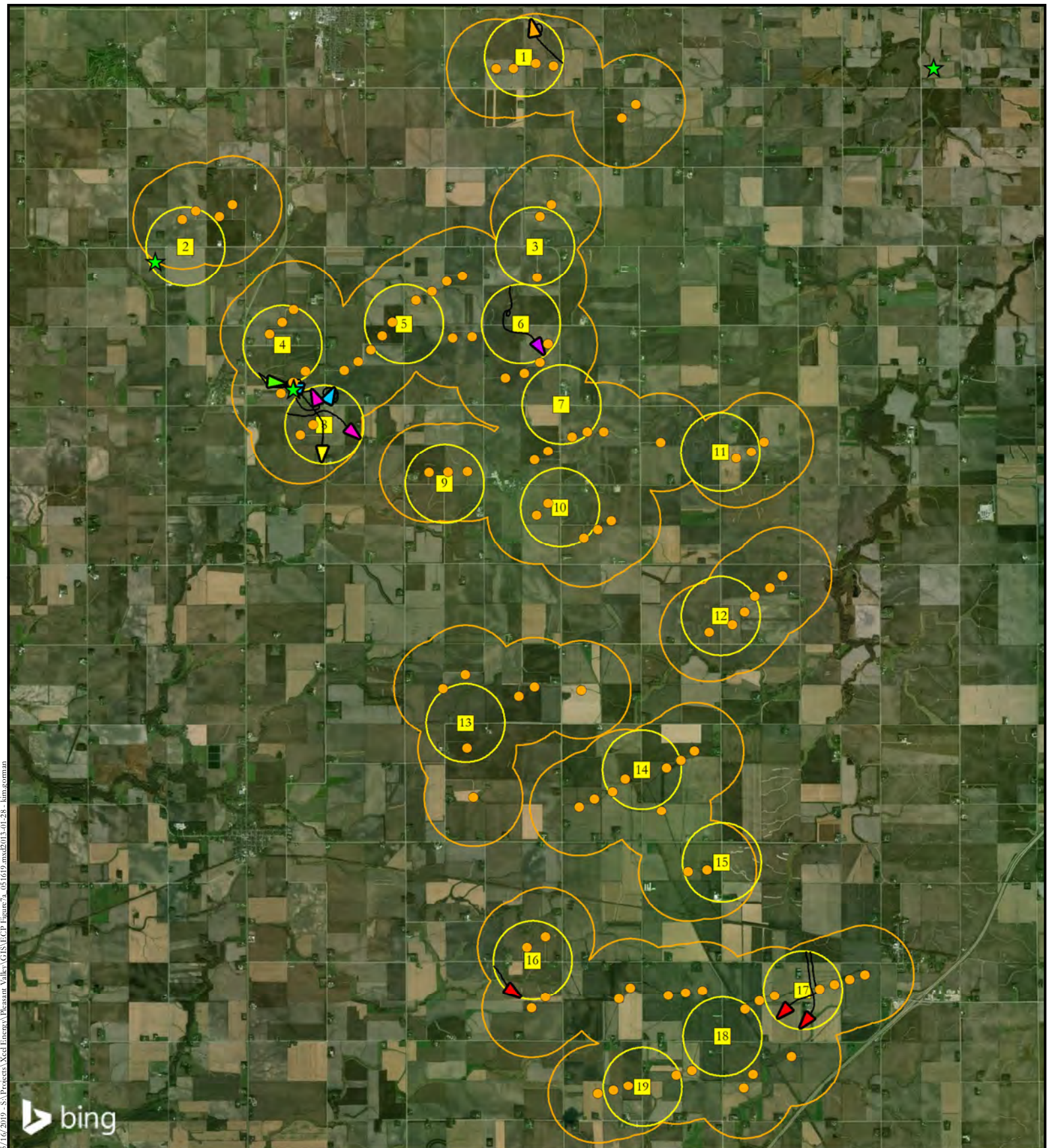
Source: Map adapted from data provided by ESRI World Imagery and Project data provided by Xcel Energy.



- Eagle Flight Path Observation Date
- 4/4/2016
 - 6/9/2016
 - Eagle Survey Location
 - 800-meter Radius
 - Grand Meadow Turbine
 - Grand Meadow Project Footprint

Figure 6b - Bald Eagle Flight Paths
Above 200 Meters with Survey Locations
Grand Meadow Wind Farm
Mower County, Minnesota



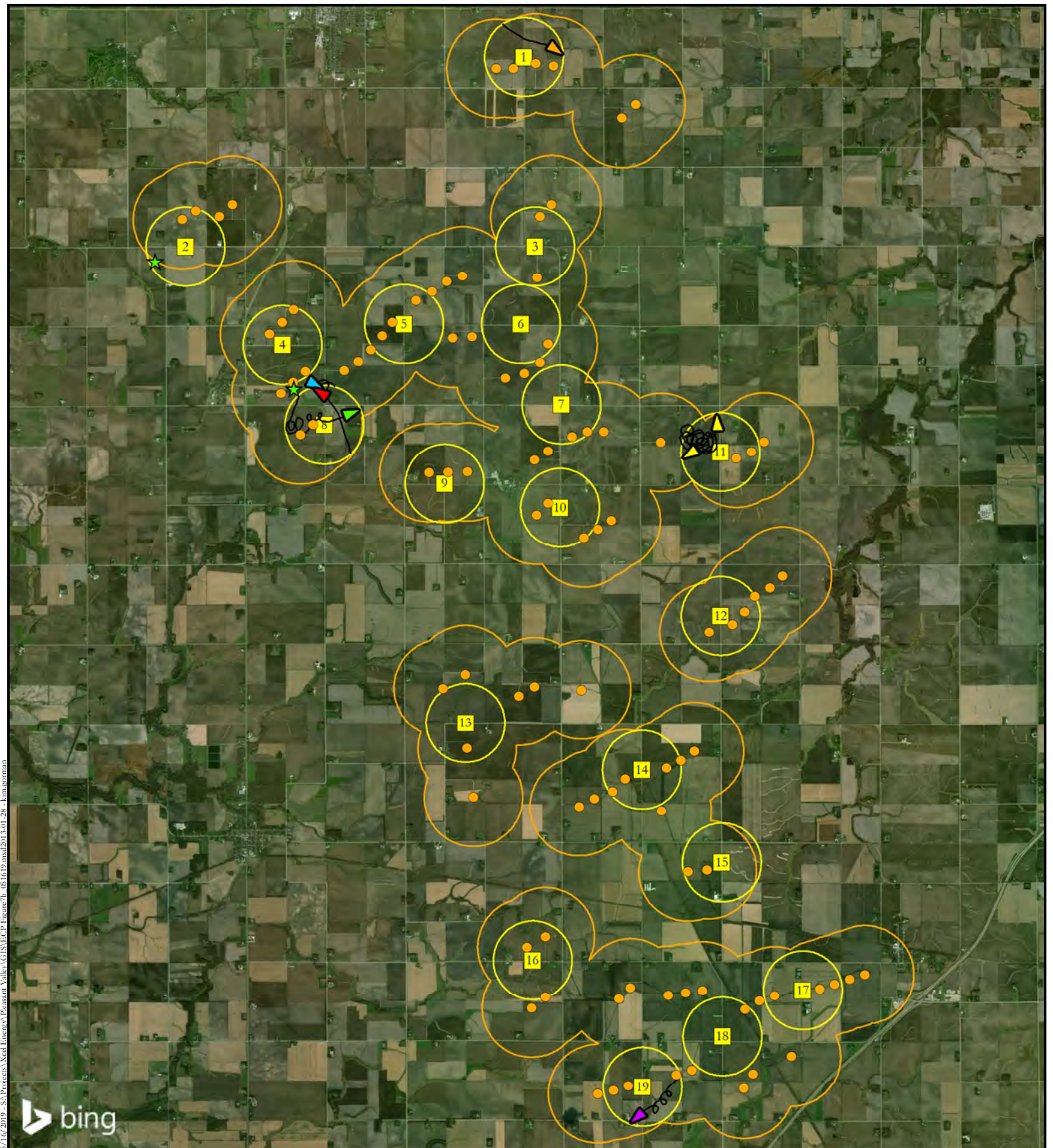


Source: Map adapted from data provided by Bing Aerials and Project data provided by Xcel Energy.



Eagle Flight Path Observation Date	★ Bald Eagle Nest
—▶ 3/18/2016	■ Point Count Location
—▶ 4/20/2016	□ 800-meter Radius
—▶ 5/17/2016	● Pleasant Valley Turbine
—▶ 7/19/2016	○ Pleasant Valley Project Footprint
—▶ 12/13/2016	
—▶ 12/14/2016	
—▶ 2/14/2017	

Figure 7a - Bald Eagle Flight Paths
Below 200 Meters with Survey Locations
Pleasant Valley Wind Farm
Dodge and Mower Counties, Minnesota



5/16/2019 - S:\Projects\Xcel Energy\Pleasant Valley\GIS\VECP\Figure7b_051619.mxd 2013-01-28 - kim.gorman

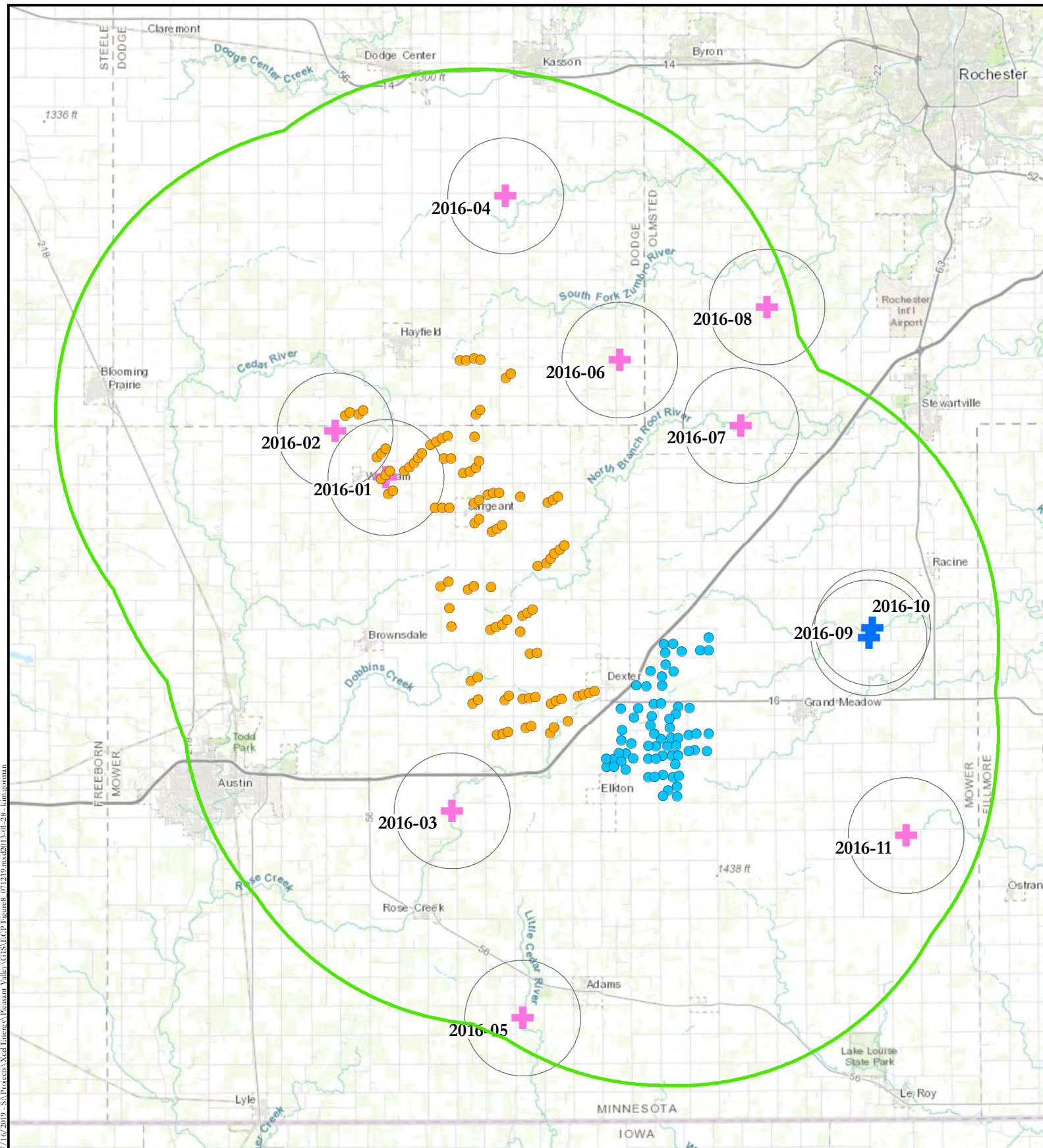
Source: Map adapted from data provided by Bing Aerials and Project data provided by Xcel Energy.



- | | |
|------------------------------------|-------------------------------------|
| Eagle Flight Path Observation Date | ★ Bald Eagle Nest |
| — 4/19/2016 | ■ Point Count Location |
| — 5/18/2016 | □ 800-meter Radius |
| — 6/16/2016 | ● Pleasant Valley Turbine |
| — 4/20/2016 | ○ Pleasant Valley Project Footprint |
| — 5/17/2016 | |
| — 12/13/2016 | |

Figure 7b - Bald Eagle Flight Paths
Above 200 Meters with Survey Locations
Pleasant Valley Wind Farm
Dodge and Mower Counties, Minnesota





7/16/2019 - S:\Projects\Xcel Energy\Pleasant Valley\GIS\NECP_Figure8_071219.mxd 2013.01.28 - kingjordan

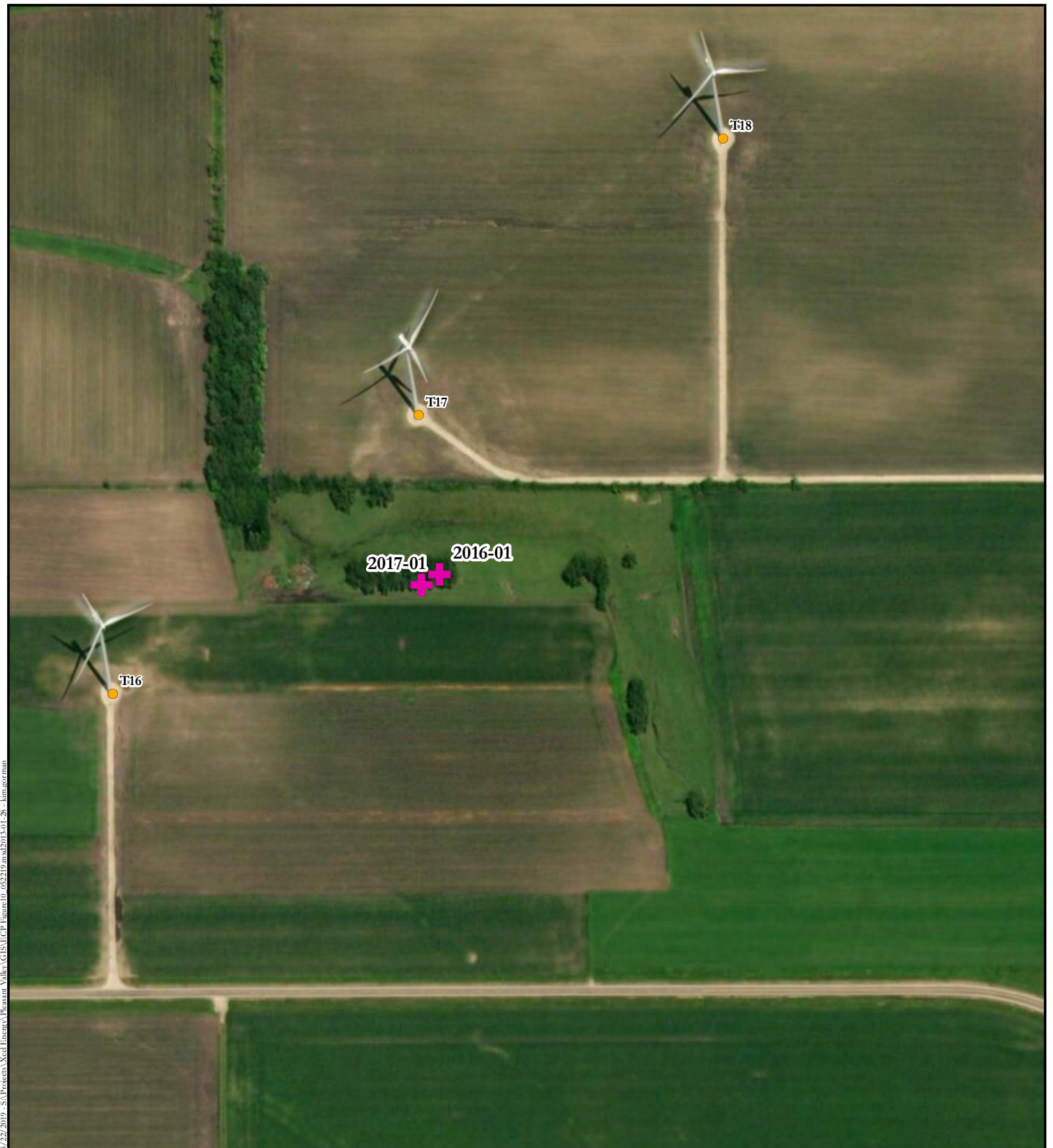
Source: Map adapted from data provided by World Topos and Project data provided by Xcel Energy



- 2016 Stick Nest Location**
Species, Spring 2016 Status
 + BAEA, Occupied Active
 + BAEA, Occupied Inactive
 ○ Half Mean Internest Distance - 2 Mile
 ● Grand Meadow Turbine
 ● Pleasant Valley Turbine
 ○ 10-mile Radius of Project Turbines

Figure 8 - Aerial Survey Boundary and Identified Nests
 Grand Meadow and
 Pleasant Valley Wind Farms
 Dodge and Mower Counties, Minnesota





5/22/2019 - S:\Projects\Xcel Energy\Pleasant Valley\GIS\VECP\Figure10_052219.mxd2013-01-28 - kim.gorman

Source: Map adapted from data provided by World Imagery and Project data provided by Xcel Energy.



- + Bald Eagle Nest Location
- Pleasant Valley Turbine



Figure 10 - Bald Eagle Nests 2016-01 and 2017-01
Grand Meadow and Pleasant Valley Wind Farms
Dodge and Mower Counties, Minnesota



This page intentionally left blank