



DEPARTMENT OF THE ARMY
U.S. ARMY CORPS OF ENGINEERS, GALVESTON DISTRICT
P. O. BOX 1229
GALVESTON, TEXAS 77553-1229

October 26, 2020

Evaluation Branch

SUBJECT: Permit No. SWG-2013-00646; Nationwide Permit Verification

Ms. Cherie O'Brien
Texas Parks and Wildlife
4200 Smith School Road
Austin, Texas 78744

Dear Ms. O'Brien:

This is in reference to your request, dated March 6, 2020, to discharge fill during the dredging of approximately 88,000 cubic yards of sediment from 13,500 linear feet of optional construction flotation/access channels to facilitate the construction of 8,820 linear feet of rock breakwater and beneficial use area if the flotation channels are constructed. The flotation channels, rock breakwaters and marsh mounds would be constructed on state owned submerged lands at the mouth of Ostermayer Bayou, around and in front of Shell Island Point, Bird Island Cove and McAllis Point, in Galveston County, Texas.

This request is verified by Nationwide Permit (NWP) 27 pursuant to Section 404 of the Clean Water Act. This NWP verification is valid provided the activity is compliant with the enclosed plans, in 11 sheets. In addition, the activity must be in compliance with the NWP General/Regional Conditions, Section 401 Water Quality Certification, and the Coastal Management Program, which can be found at: <http://www.swg.usace.army.mil/Business-With-Us/Regulatory/Permits/Nationwide-General-Permits/>, a hard copy can be provided to you upon request.

Nationwide Permit 27. Aquatic Habitat Restoration, Enhancement, and Establishment Activities: Activities in waters of the United States associated with the restoration, enhancement, and establishment of tidal and non-tidal wetlands and riparian areas.

This NWP verification is valid until the NWP is modified, reissued, or revoked. All of the existing NWPs are scheduled to be modified, reissued, or revoked prior to March 18, 2022. It is incumbent upon you to remain informed of changes to the NWPs. We will issue a public notice when the NWPs are reissued. Furthermore, if you commence or are under contract to commence this activity before the date that the relevant NWP is modified or revoked, you will have 12 months from the date of the modification or revocation of the NWP to complete the activity under the present terms and conditions of this NWP.

This verification does not address nor include any consideration for geographic jurisdiction on aquatic resources and shall not be interpreted as such. If you have any questions regarding this verification, please contact Ms. Kara Vick at the letterhead address or by telephone at 409-766-6354. Please notify the Chief of the Compliance Branch in the Galveston District Regulatory Division, in writing, at the letterhead address, upon completion of the authorized project.

FOR THE DISTRICT COMMANDER:

Kristi N. McMillan
Leader, Central Evaluation Unit

cc w/Encl.

Eighth Coast Guard District, New Orleans, LA

National Oceanic and Atmospheric Administration (NOAA), National Ocean Service (NOS), Coast & Geodetic Survey, Silver Spring, MD

Texas Commission on Environmental Quality

Texas General Land Office

PERMITTED PLANS



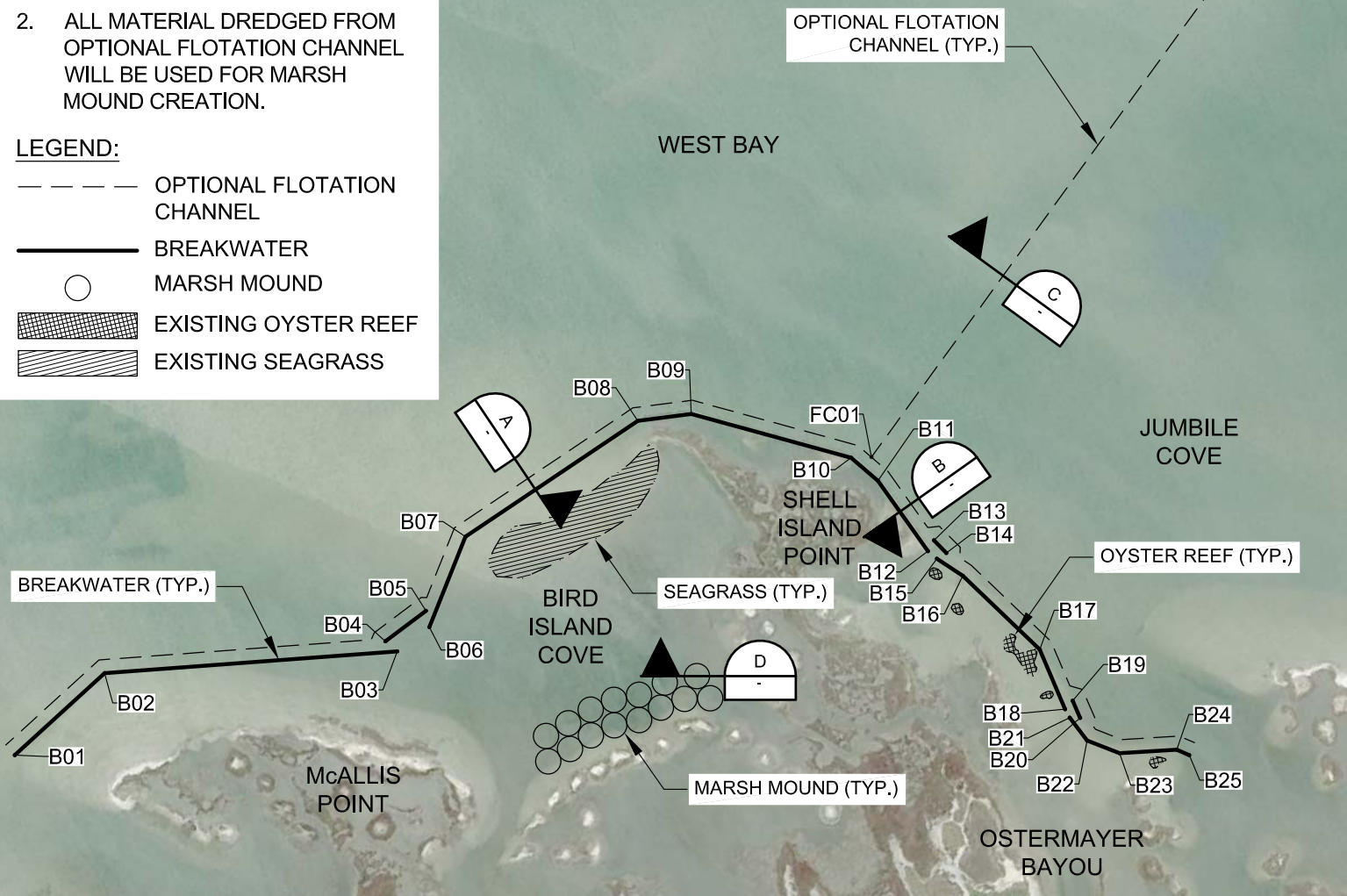
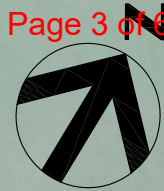


- COORDINATES SHOWN ARE IN U.S. FT AND ARE REFERENCED TO STATE PLANE, TEXAS SOUTH CENTRAL ZONE, NAD '83.
- ALL MATERIAL DREDGED FROM OPTIONAL FLOTATION CHANNEL WILL BE USED FOR MARSH MOUND CREATION.

LEGEND:

- OPTIONAL FLOTATION CHANNEL
- BREAKWATER
- MARSH MOUND
- ▨ EXISTING OYSTER REEF
- ▨ EXISTING SEAGRASS

PERMITTED PLANS



APPROXIMATE BREAKWATER COORDINATES		
POINT	NORTHING	EASTING
B01	13,632,800	3,238,161
B02	13,633,492	3,238,366
B03	13,634,500	3,239,786
B04	13,634,515	3,239,695
B05	13,634,794	3,239,807
B06	13,634,722	3,239,875
B07	13,635,292	3,239,781
B08	13,636,409	3,240,301
B09	13,636,608	3,240,552
B10	13,636,876	3,241,499

APPROXIMATE BREAKWATER COORDINATES		
POINT	NORTHING	EASTING
B11	13,636,841	3,241,705
B12	13,636,637	3,242,175
B13	13,636,711	3,242,173
B14	13,636,684	3,242,274
B15	13,636,626	3,242,243
B16	13,636,618	3,242,428
B17	13,636,481	3,243,045
B18	13,636,255	3,243,356
B19	13,636,321	3,243,369
B20	13,636,257	3,243,460

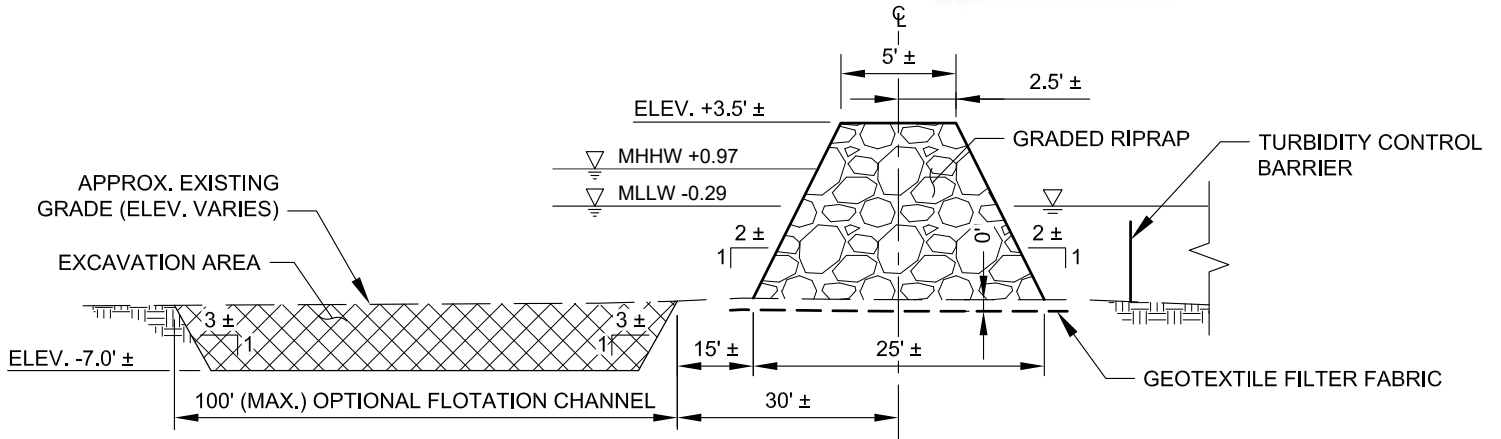
APPROXIMATE BREAKWATER COORDINATES		
POINT	NORTHING	EASTING
B21	13,636,226	3,243,406
B22	13,636,163	3,243,565
B23	13,636,198	3,243,769
B24	13,636,391	3,244,048
B25	13,636,403	3,244,128

APPROXIMATE FLOTATION CHANNEL COORDINATES		
POINT	NORTHING	EASTING
FC01	13,636,942	3,241,600
FC02	13,641,501	3,241,988

BREAKWATER AND FLOTATION CHANNEL LAYOUT



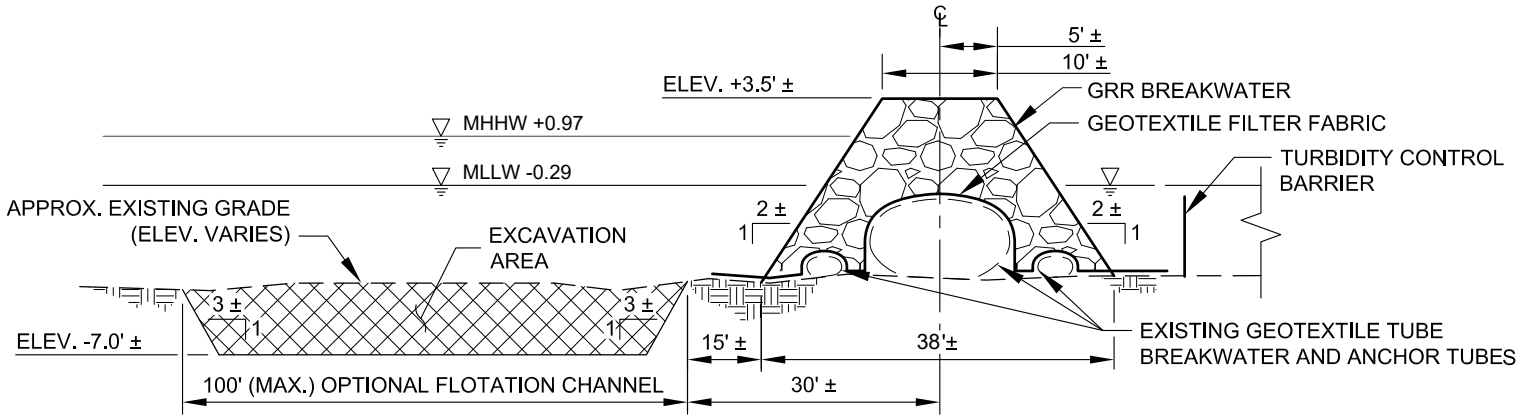
PERMITTED PLANS



**TYPICAL SECTION -
OPTIONAL FLOTATION CHANNEL FOR GRR BREAKWATER**

A
1

NOT TO SCALE



**TYPICAL SECTION - OPTIONAL FLOTATION
CHANNEL FOR GRR BREAKWATER OVER GEOTUBE**

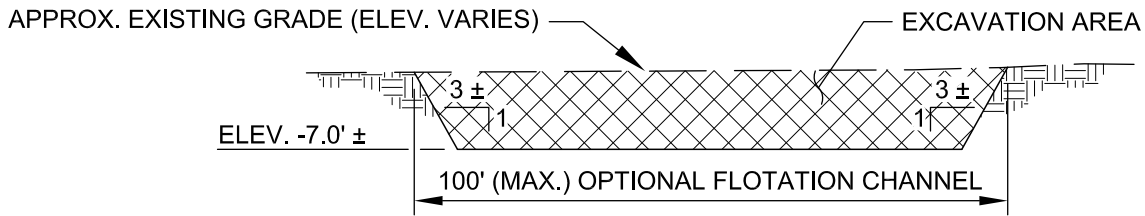
B
1

NOT TO SCALE

MHHW	+0.97
MHW	+0.87
MSL	+0.45
NAVD88	0.00
MLW	-0.09
MLLW	-0.29

- NOTES:**
- COORDINATES SHOWN ARE IN U.S. FEET AND ARE REFERENCED TO STATE PLANE, TEXAS SOUTH CENTRAL ZONE, NAD '83.
 - ALL MATERIAL DREDGED FROM FLOTATION CHANNELS WILL BE USED FOR MARSH MOUND CREATION.
 - CONSTRUCTION OF FLOTATION CHANNEL ADJACENT TO BREAKWATER WILL ONLY OCCUR AT LOCATION SHOWN IN PLAN VIEW.

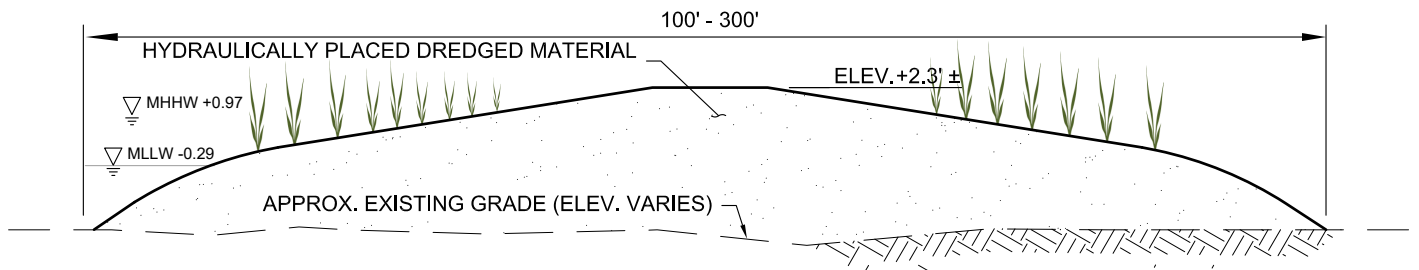
PERMITTED PLANS



TYPICAL SECTION - OPTIONAL FLOTATION CHANNEL FOR GRR BREAKWATER

C
1

NOT TO SCALE



D
1

TYPICAL SECTION - MARSH MOUND

NOT TO SCALE

THE TARGET ELEVATION OF THE MARSH MOUNDS IS +2.3 WITH A CONSTRUCTION TOLERANCE OF PLUS OR MINUS 0.2 ft.

MHHW	+0.97
MHW	+0.87
MSL	+0.45
NAVD88	0.00
MLW	-0.09
MLLW	-0.29

- NOTES:**
- COORDINATES SHOWN ARE IN U.S. FEET AND ARE REFERENCED TO STATE PLANE, TEXAS SOUTH CENTRAL ZONE, NAD '83.
 - ALL MATERIAL DREDGED FROM FLOTATION CHANNELS WILL BE USED FOR MARSH MOUND CREATION.
 - CONSTRUCTION OF FLOTATION CHANNEL ADJACENT TO BREAKWATER WILL ONLY OCCUR AT LOCATION SHOWN IN PLAN VIEW.



Figure 1. Habitats Created, Protected and Enhanced by the Project.