

**APPENDIX J:
HAZARDOUS TOXIC AND
RADIOACTIVE WASTE
ASSESSMENT**

J3: Appendices F-G

Appendix F

PHOTOGRAPHS



Photograph 1. Overview of Mississippi River Levee Area 1 Facing North
(29°39'27.93"N, 89°57'46.68"W)



Photograph 2. Overview of Mississippi River Levee Area 1 Facing East



Photograph 3. Overview of Mississippi River Levee Area 1 Facing South



Photograph 4. Overview of Mississippi River Levee Area 1 Facing West



Photograph 5. Overview of Mississippi River Levee Area 2 Facing North
(29°39'49.83"N, 89°57'48.43"W)



Photograph 6. Overview of Mississippi River Levee Area 2 Facing East



Photograph 7. Overview of Mississippi River Levee Area 2 Facing South



Photograph 8. Overview of Mississippi River Levee Area 2 Facing West



Photograph 9. Overview of Wooded Area 1 Facing North
(29°39'39.82"N, 89°57'59.45"W)



Photograph 10. Overview of Wooded Area 1 Facing East



Photograph 11. Overview of Wooded Area 1 Facing South



Photograph 12. Overview of Wooded Area 1 Facing West



Photograph 13. Overview of Wooded Area 2 Facing North
(29°39'32.80"N, 89°58'6.08"W)



Photograph 14. Overview of Wooded Area 2 Facing East



Photograph 15. Overview of Wooded Area 2 Facing South



Photograph 16. Overview of Wooded Area 2 Facing West



Photograph 17. Overview of Wooded Area 3 Facing North
(29°39'28.95"N, 89°58'14.64"W)



Photograph 18. Overview of Wooded Area 3 Facing East



Photograph 19. Overview of Wooded Area 3 Facing South



Photograph 20. Overview of Wooded Area 3 Facing West



Photograph 21. Overview of Wooded Area 4 Facing North
(29°39'22.50"N, 89°58'9.61"W)



Photograph 22. Overview of Wooded Area 4 Facing East



Photograph 23: Overview of Wooded Area 4 Facing South



Photograph 24: Overview of Wooded Area 4 Facing West



Photograph 25. Overview of Highway Area 1 Facing North
(29°39'1.44"N, 89°58'5.58"W)



Photograph 26. Overview of Highway Area 1 Facing East



Photograph 27. Overview of Highway Area 1 Facing South



Photograph 28. Overview of Highway Area 1 Facing West



Photograph 29. Overview of Highway Area 2 Facing North
(29°39'14.22"N, 89°58'15.60"W)



Photograph 30. Overview of Highway Area 2 Facing East



Photograph 31. Overview of Highway Area 2 Facing South



Photograph 32. Overview of Highway Area 2 Facing West



Photograph 33. Overview of Highway Area 3 Facing North
(29°39'43.14"N, 89°58'31.14"W)



Photograph 34. Overview of Highway Area 3 Facing East



Photograph 35 - Overview of Highway Area 3 Facing South



Photograph 36 - Overview of Highway Area 3 Facing West



Photograph 37. Overview of Pasture Area 1 Facing North
(29°39'12.66"N, 89°58'38.04"W)



Photograph 38. Overview of Pasture Area 1 Facing East



Photograph 39. Overview of Pasture Area 1 Facing South



Photograph 40. Overview of Pasture Area 1 Facing West



Photograph 41. Overview of Pasture Area 2 Facing North
(29°39'48.30"N, 89°59'5.12"W)



Photograph 42. Overview of Pasture Area 2 Facing East



Photograph 43. Overview of Pasture Area 2 Facing South



Photograph 44. Overview of Pasture Area 2 Facing West



Photograph 45. Overview of Parish Levee Area Facing North
GPS: 28.6241 N, 89.5129 W



Photograph 46. Overview of Parish Levee Area Facing East



Photograph 47: Overview of Parish Levee Area Facing South



Photograph 48: Overview of Parish Levee Area Facing West



Photograph 49. Overview of Outfall Area 1 Facing North
(29°38'27.11"N, 89°59'29.45"W)



Photograph 50. Overview of Outfall Area 1 Facing East



Photograph 51. Overview of Outfall Area 1 Facing South



Photograph 52. Overview of Outfall Area 1 Facing West



Photograph 53. Overview of Outfall Area 2 Facing North
(29°38'26.47"N, 89°59'46.56"W)



Photograph 54. Overview of Outfall Area 2 Facing East



Photograph 55. Overview of Outfall Area 2 Facing South



Photograph 56. Overview of Outfall Area 2 Facing West



Photograph 57. View from East Access Channel Area 1 Facing Southeast
(29°38'8.72"N, 89°59'37.03"W)



Photograph 58. View from East Access Channel Area 2 Facing South
(29°37'55.15"N, 89°59'14.74"W)



Photograph 59. View from East Access Channel Area 3 Facing Southwest
(29°37'27.55"N, 89°59'5.04"W)



Photograph 60. View from West Access Channel Area 1 Facing South
(29°38'16.52"N, 90°0'10.39"W)



Photograph 61. View from West Access Channel Area 2 Facing West
(29°37'33.14"N, 90°0'5.34"W)



Photograph 62. View from West Access Channel Area 3 Facing South
(29°39'30.51"N, 90°0'17.19"W)



Photograph 63. Abandoned Shed
(29°39'49.56"N, 89°57'55.61"W)



Photograph 64. Fiberglass Sleeves Adjacent to Abandoned Shed



Photograph 65. Abandoned Barn
(29°39'49.62"N, 89°57'59.57"W)



Photograph 66. Abandoned Barn



Photograph 67. Debris Adjacent to Abandoned Barn



Photograph 68. Drums Used for Water Catchment at Abandoned Barn



Photograph 69. Concrete Pad for Grain Silo
(29°39'48.24"N, 89°58'1.08"W)



Photograph 70. Galvanized Pipe Adjacent to Silo Pad



Photograph 71. Destroyed Grain Silo Adjacent to Silo Pad



Photograph 72. Metal Waste Pile
(29°39'48.18"N, 89°58'19.20"W)



Photograph 73. Metal Waste Pile



Photograph 74. Metal Waste Pile



Photograph 75. Concrete Slab
(29°39'48.70" N, 89°58'22.97" W)



Photograph 76. Possible Former Home Site
(29°39'27.86" N, 89°58'20.98" W)



Photograph 77. Propane Tank and Debris at Possible Former Home Site



Photograph 78. Entergy Office and Yard
(29°39'49.52" N, 89°58'30.50" W)



Photograph 79. Abandoned Wooden House
(29°39'47.77"N, 89°58'34.01"W)



Photograph 80. Cell Tower Site
(29°39'5.16"N, 89°58'32.10"W)



Photograph 81 - Collapsed Windmill with Flowing Water Well
(29°39'5.16"N, 89°58'32.10"W)



Photograph 82 - Flowing Water Well
(29°38'46.67"N, 89°58'56.68"W)



Photograph 83. Partially Constructed Camp
(29°38'35.02"N, 90°0'6.35"W)



Photograph 84. Oil Well Pipe (Submerged Hazard)
(29°39'51.07"N, 90°0'11.40"W)

MBSD OPERATIONS SEDIMENT DEPOSITION
OUTFALL AREA PHOTOS START HERE



Photograph 85. Site 1: Capsized Boat
(29°37'46.83"N, 89°58'59.19"W)



Photograph 86. Site 2: Damaged Oil Field Facility
(29°37'7.93"N, 89°59'32.28"W)



Photograph 87. Site 2: Damaged Oil Field Facility



Photograph 88. Site 2: Damaged Oil Field Facility



Photograph 89. Site 2: Damaged Oil Field Facility



Photograph 90. Site 3: Damaged Camp
(29°36'26.76"N, 89°58'46.52"W)



Photograph 91. Site 4: Capsized Boat
(29°35'20.83"N, 89°58'28.13"W)



Photograph 92. Site 5: Myrtle Grove Pump Station
(29°37'22.64"N, 89°57'20.24"W)



Photograph 93. Site 6: Multiple Camp Structures
(29°36'1.46"N, 89°57'14.04"W)



Photograph 94. Site 6: Multiple Camp Structures



Photograph 95. Site 7: Multiple Camp Structures
(29°35'31.93"N, 89°56'38.79"W)



Photograph 96. Site 8: Camps Along Lake Hermitage Road
(29°35'36.24"N, 89°54'28.14"W)



Photograph 97. Site 8: Grouping of Camps Along Lake Hermitage Road



Photograph 98. Site 9: Oil Field Facility on Barges
(29°33'17.01"N, 89°54'14.32"W)



Photograph 99. Site 10: Well Platform
(29°33'2.33"N, 89°54'36.00"W)



Photograph 100. Site 11: Well Field Structures
(29°32'33.60"N, 89°53'32.08"W)



Photograph 101. Site 12: Well Platform
(29°31'52.16"N, 89°54'12.25"W)



Photograph 102. Site 12: Well Field / Pipeline Valve Site



Photograph 103. Site 13: Moored Shrimp Boat
(29°31'46.20"N, 89°54'5.84"W)



Photograph 104. Site 14: Shrimp Net Platform
(29°31'38.24"N, 89°54'12.39"W)



Photograph 105. Site 15: Displaced Camp Structure
(29°31'44.24"N, 89°54'15.17"W)



Photograph 106. Site 16: Shrimp Net Platform and Pilings
(29°32'12.28"N, 89°54'9.78"W)



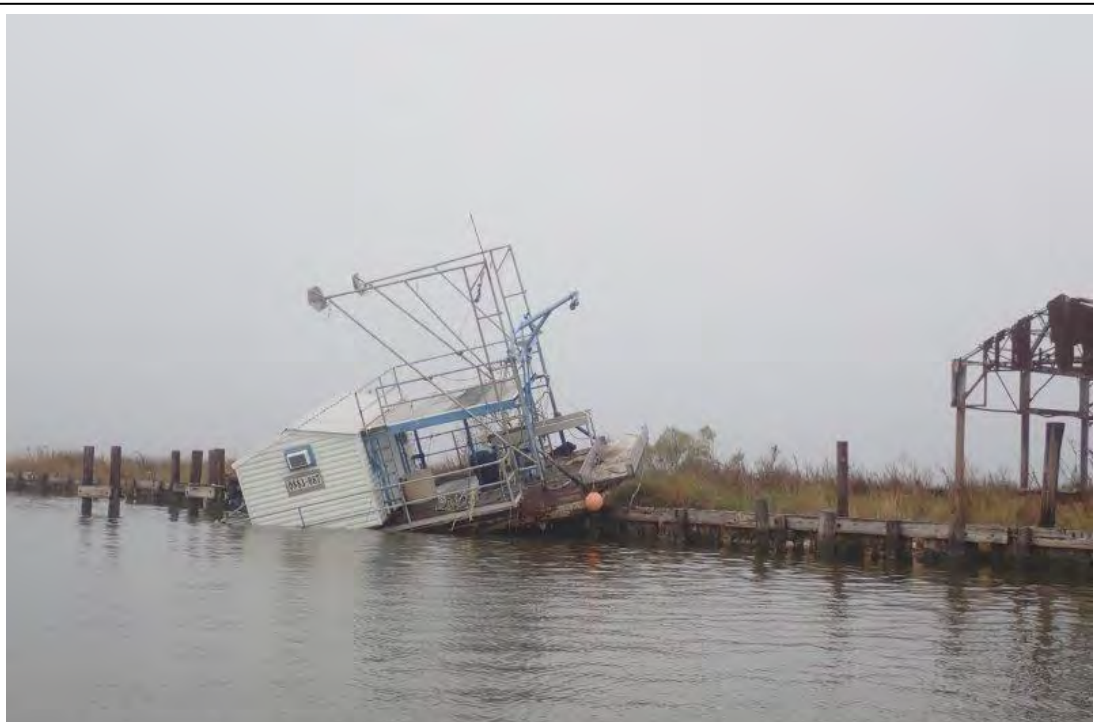
Photograph 107. Site 17: Well Platform
(29°32'19.86"N, 89°54'22.60"W)



Photograph 108. Site 18: Damaged Oil Field Facility
(29°32'22.89"N, 89°54'16.42"W)



Photograph 109. Site 18: Oilfield Condensate Structure



Photograph 110. Site 18: Storm Damaged Floating Shrimp Net Platform (Relocated from Near Site 14)



Photograph 111. Site 19: Grouping of Camps
(29°33'17.97"N, 89°57'16.83"W)



Photograph 112. Site 20: Grouping of Camps
(29°32'38.78"N, 90°1'56.68"W)



Photograph 113. Site 21: Grouping of Camps
(29°33'8.49"N, 90°1'25.49"W)



Photograph 114. Site 22: Damaged Oil Field Facility
(29°30'39.01"N, 89°59'9.13"W)



Photograph 115. Site 22: Damaged Oil Field Facility



Photograph 116. Site 22: Damaged Oil Field Facility



Photograph 117. Site 22: Sunken Tank



Photograph 118. Site 22: Storm Damaged Work Boat



Photograph 119. Site 23: Group of Camps
(29°30'31.43"N, 90°1'11.79"W)



Photograph 120. Site 23: Group of Camps



Photograph 121. Site 24: Camp with Pier
(29°30'51.50"N, 90°3'31.52"W)



Photograph 122. Site 25: Oil Field Tank Battery with Flare Unit
(29°32'21.78"N, 90°3'5.60"W)



Photograph 123. Site 26: Camp Structures
(29°32'7.74"N, 90°3'58.79"W)



Photograph 124. Site 26: Camp Structures



Photograph 125. Site 27: Oil Field / Pipeline Metering Platform
(29°32'40.15"N, 90°3'36.20"W)



Photograph 126. Site 28: Well Platforms
(29°32'33.33"N, 90°3'5.48"W)



Photograph 127. Site 28: Well Platforms



Photograph 128. Site 29: Oil Field Platforms
(29°32'34.68"N, 90°3'43.28"W)



Photograph 129. Site 29: Boat Dock Platform



Photograph 130. Site 30: Camp Structure
(29°33'49.25"N, 90°3'51.96"W)



Photograph 131. Site 31: Camp Structure
(29°33'24.44"N, 90°4'25.75"W)



Photograph 132. Site 32: Oil Field Facility Structures
(29°34'55.88"N, 90°3'40.42"W)



Photograph 133. Site 32: Oil Field Facility Structures



Photograph 134. Site 32: Oil Field Facility Structures



Photograph 135. Site 32: Oil Field Facility Structures



Photograph 136. Site 32: Oil Field Facility Structures



Photograph 137. Site 33: Pipeline Valve Platform
(29°36'11.77"N, 90°4'28.50"W)



Photograph 138. Site 34: Camp and Boatshed Complex
(29°36'13.14"N, 90°3'37.24"W)



Photograph 139. Site 35: Well Platform with Flare Unit
(29°36'40.16"N, 90°3'13.17"W)



Photograph 140. Site 36: Abandoned Camp and Boatshed Complex
(29°36'47.12"N, 90°2'59.27"W)



Photograph 141. Site 37: Pipeline Valve Structure
(29°38'3.95"N, 90°3'52.48"W)



Photograph 142. Site 38: Floating Camp Structure
(29°34'35.29"N, 89°59'12.66"W)



Photograph 143. Site 39: Well Platform
(29°34'7.73"N, 90°1'21.76"W)



Photograph 144. Site 39: Oil Field Flare Unit



Photograph 145. Site 40: Well Platform
(29°35'40.39"N, 90°1'37.96"W)



Photograph 146. Site 41: Oil Field Valve Platform
(29°35'44.26"N, 90°1'49.46"W)



Photograph 147. Site 42: Well Platform
(29°35'49.93"N, 90°1'43.70"W)

Appendix G

FIELD OBSERVED SITES MAPS

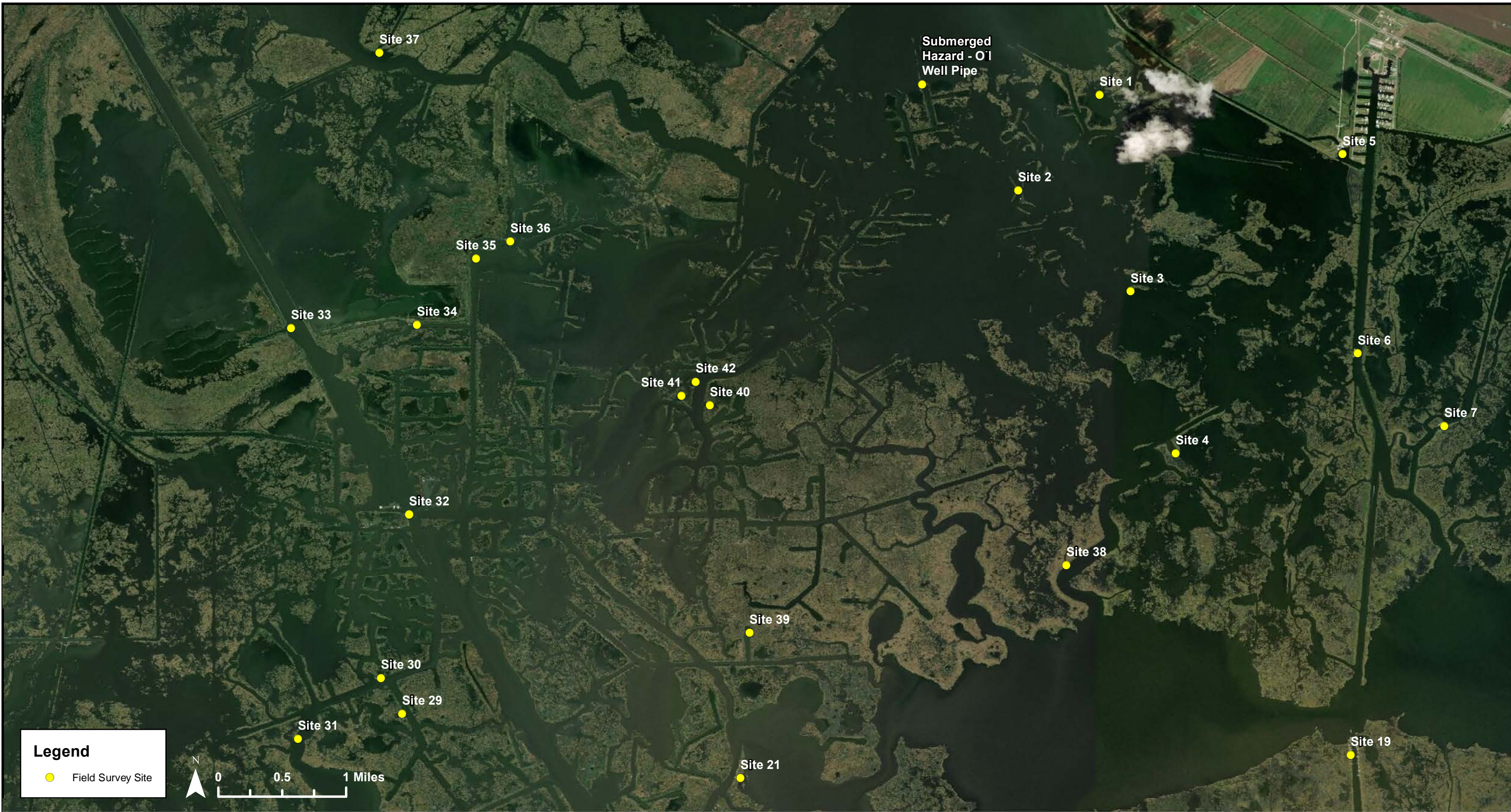


Observed Field Survey Sites
 Mid-Barataria Sediment Diversion
 Phase I Environmental Site Assessment
 Jefferson and Plaquemines Parish

Service Layer Credits: Source: Esri, DigitalGlobe, GeoEye, Earthstar Geographics, CNES/Airbus DS, USDA, USGS, AeroGRID, IGN, and the GIS User Community



Figure: Appendix G-1
Date: January 2020
Scale: 1:20,000
Source: GEC
Map ID: 0028.8500801.002



Observed Field Survey Sites
 Mid-Barataria Sediment Diversion
 Phase I Environmental Site Assessment
 Jefferson and Plaquemines Parish

Service Layer Credits: Source: Esri, DigitalGlobe, GeoEye, Earthstar Geographics, CNES/Airbus DS, USDA, USGS, AeroGRID, IGN, and the GIS User Community



Figure: Appendix G-2

Date: January 2020

Scale: 1:45,000

Source: GEC

Map ID: 0028.8500801.002



Observed Field Survey Sites
 Mid-Barataria Sediment Diversion
 Phase I Environmental Site Assessment
 Jefferson and Plaquemines Parish

Service Layer Credits: Source: Esri, DigitalGlobe, GeoEye, Earthstar Geographics, CNES/Airbus DS, USDA, USGS, AeroGRID, IGN, and the GIS User Community



Figure: Appendix G-3
Date: January 2020
Scale: 1:45,000
Source: GEC
Map ID: 0028.8500801.002



Observed Field Survey Sites
 Mid-Barataria Sediment Diversion
 Phase I Environmental Site Assessment
 Jefferson and Plaquemines Parish

Service Layer Credits: Source: Esri, DigitalGlobe, GeoEye, Earthstar Geographics, CNES/Airbus DS, USDA, USGS, AeroGRID, IGN, and the GIS User Community



Figure: Appendix G-4

Date: January 2020

Scale: 1:45,000

Source: GEC

Map ID: 0028.8500801.002