



REPLY TO
ATTENTION OF:

DEPARTMENT OF THE ARMY
CORPS OF ENGINEERS, NEW ORLEANS DISTRICT
7400 LEAKE AVENUE
NEW ORLEANS, LOUISIANA 70118

September 9, 2021

Regulatory Division
Eastern Evaluation Branch

SUBJECT: MVN 2021-00478 EMM

CPRA
Post Office Box 44027
Baton Rouge, Louisiana 70815

Gentlemen:

The proposed work, to install and maintain improvements to an access road, parking area, and a boat launch, Bayou Segnette Park, in Westwego, Louisiana, Jefferson Parish, as shown on the enclosed drawings, is authorized under **Category I** of the **Programmatic General Permit**, provided that all conditions of the permit are met.

In addition, you must comply with the following conditions:

1. The "Standard manatee conditions for in-water activities" are enclosed.
2. Please be aware that our Real Estate Division has indicated that your project is located in an area over which the federal government holds real estate interest. No work shall be performed under this permit until a real estate instrument is issued by our Real Estate Division. You may contact our Real Estate Division to initiate these procedures by emailing Robert.J.Thomson@usace.army.mil.

This authorization has a blanket water quality certification from the Louisiana Department of Environmental Quality; therefore, no additional authorization from DEQ is required.

However, prior to commencing work on your project, you must obtain approvals from state and local agencies as required by law and by terms of this permit. These approvals include, but are not limited to, a permit, consistency determination or determination of "no direct or significant impact (NDSI) on coastal waters" from the Louisiana Department of Natural Resources, Office of Coastal Management.

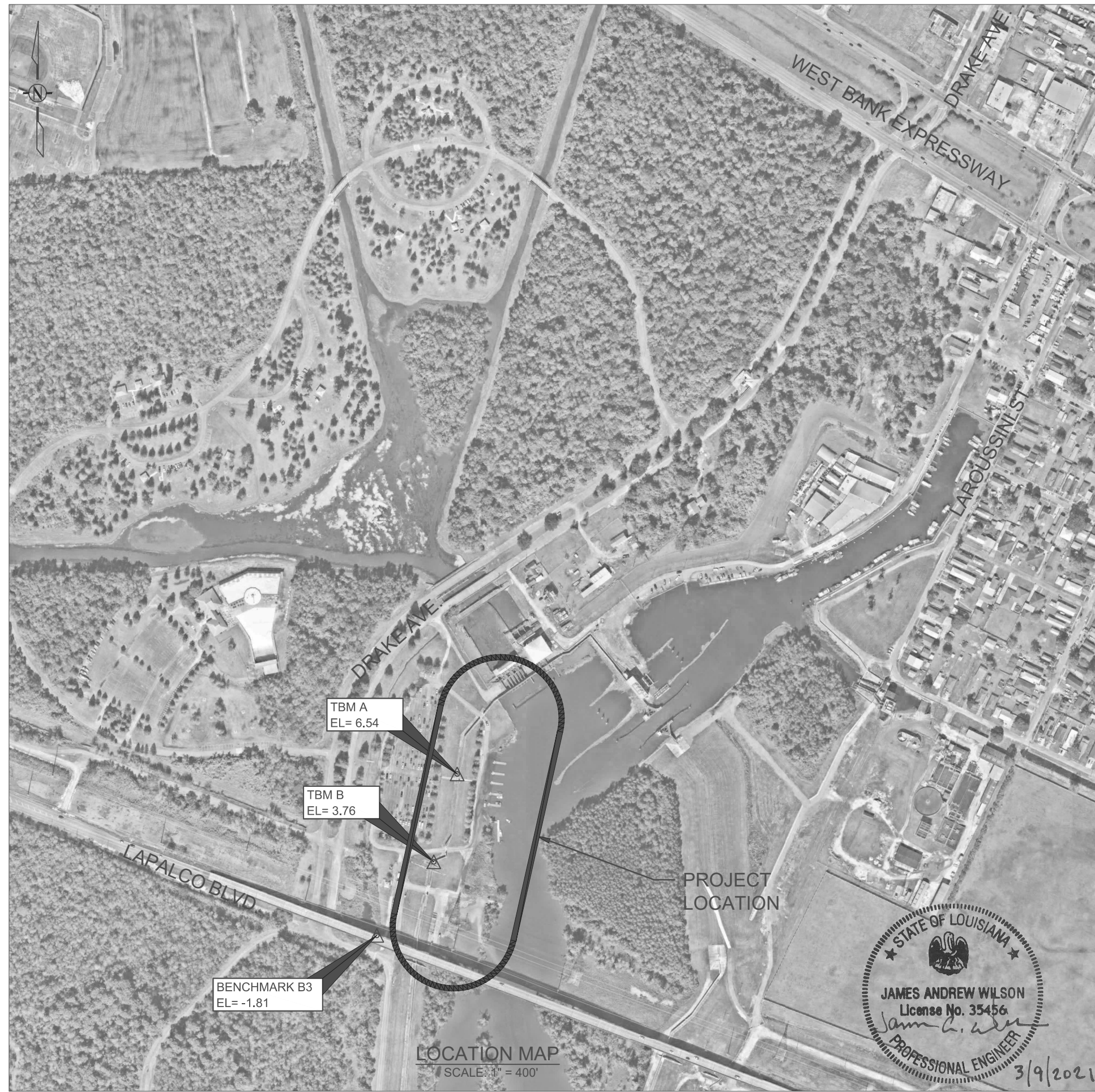
This approval to perform work is valid for 5 years from the date of this letter. Permittee is aware that this office may re-evaluate its decision on this permit at any time the circumstances warrant.

Should you have any further questions concerning this matter, please contact Scott Kennedy of this office at (504) 862-2259.

Sincerely,

Martin S. Mayer
Acting Chief, Regulatory Division

Enclosure



GENERAL NOTES

THE LOCATIONS OF UNDERGROUND AND OTHER NONVISIBLE UTILITIES SHOWN HEREON HAVE BEEN DETERMINED FROM DATA EITHER FURNISHED BY THE AGENCIES CONTROLLING SUCH DATA AND/OR EXTRACTED FROM RECORDS MADE AVAILABLE TO US BY THE AGENCIES CONTROLLING SUCH RECORDS. WHERE FOUND, THE SURFACE FEATURES OF LOCATIONS ARE SHOWN. THE ACTUAL NONVISIBLE LOCATIONS MAY VARY FROM THOSE SHOWN HEREON. EACH AGENCY SHOULD BE CONTACTED RELATIVE TO THE PRECISE LOCATION OF ITS UNDERGROUND INSTALLATION PRIOR TO ANY RELIANCE UPON THE ACCURACY OF SUCH LOCATIONS SHOWN HEREON, INCLUDING PRIOR TO EXCAVATION AND DIGGING.

VERTICAL DATUM BASIS

ELEVATIONS SHOWN ON THIS SURVEY ARE BASED ON THE NORTH AMERICAN VERTICAL DATUM OF 1988 (NAVD88) UTILIZING GEOID 12B. THEY ARE DERIVED FROM GPS OBSERVATIONS REFERENCED TO THE LOUISIANA STATE UNIVERSITY CONTINUOUSLY OPERATING REFERENCE STATIONS (CORS) NETWORK IN ACCORDANCE WITH LOUISIANA R.S. 50:173.1 COVERING VERTICAL CONTROL STANDARDS.

BENCHMARKS

BENCHMARK B3 A BRASS DISK LOCATED AT THE BASE OF THE LAPALCO BRIDGE (N: 509114.15, E: 3652713.88)
ELEVATION: -1.81' N.A.V.D. 88 GEOID 12B

TBM A CROSS CUT AT THE NORTH CORNER OF A FLAG POLE BASE WEST OF THE FLOODWALL ±13 FEET WEST OF INTERSECTION OF SIDEWALK AND FLOODWALL PAVING, ±8 FEET SOUTHWEST OF CORNER OF NEAREST FLAG POLE AND ±142 FEET WEST OF CORNER OF FLOODWALL.
(N: 509707.95, E: 3653009.67)
ELEVATION: 6.54' N.A.V.D. 88 GEOID 12B

TBM B CROSS CUT AT THE CORNER OF THE FLOODWALL BASE SOUTHEAST OF BS03 GATE ±31 FEET SOUTHWEST OF BACK OF CURB, ±181 FEET SOUTHEAST OF PIPE SUPPORT AND ±38 FEET EAST OF FLOODWALL BASE CORNER. (N: 509384.65, E: 3652923.62)
ELEVATION: 3.76' N.A.V.D. 88 GEOID 12B

PERMIT NOTES

- AS-BUILT DRAWINGS AND/OR PLATS SHALL HAVE WRITTEN ON THEM THE DATE OF COMPLETION OF SAID ACTIVITIES AND SHALL BE SUBMITTED TO THE LOUISIANA DEPARTMENT OF NATURAL RESOURCES, OFFICE OF COASTAL MANAGEMENT, P. O. BOX 44487, BATON ROUGE, LA 70804-4487 WITHIN 30 DAYS FOLLOWING PROJECT COMPLETION.
- ALL STRUCTURES BUILT UNDER THE AUTHORIZATION AND CONDITIONS OF THIS PERMIT SHALL BE REMOVED FROM THE SITE WITHIN 120 DAYS OF ABANDONMENT OF THE FACILITIES FOR THE HEREIN PERMITTED USE, OR WHEN THESE STRUCTURES FALL INTO A STATE OF DISREPAIR SUCH THAT THEY CAN NO LONGER FUNCTION AS INTENDED. THIS CONDITION DOES NOT PRECLUDE THE NECESSITY FOR REVISING THE CURRENT PERMIT OR OBTAINING A SEPARATE COASTAL USE PERMIT, SHOULD ONE BE REQUIRED, FOR SUCH REMOVAL ACTIVITIES.
- STRUCTURES MUST ALSO BE MARKED/LIGHTED IN ACCORDANCE WITH U.S. COAST GUARD REGULATIONS.
- IN ORDER TO ENSURE THE SAFETY OF ALL PARTIES, THE PERMITTEE SHALL CONTACT THE LOUISIANA ONE CALL SYSTEM (1-800-272-3020) A MINIMUM OF 48 HOURS PRIOR TO THE COMMENCEMENT OF ANY EXCAVATION (DIGGING, DREDGING, JETTING, ETC.) OR DEMOLITION ACTIVITY.
- THE APPLICANT MUST SUBMIT FOR AND RECEIVE A LEVEE PERMIT / LETTER OF NO OBJECTION FROM THE CPRA, THE UNITED STATES ARMY CORPS OF ENGINEERS AND THE WEST JEFFERSON LEVEE DISTRICT PRIOR TO COMMENCEMENT OF THE ACTIVITY.

<p>4508 CLEARVIEW PKWY, METAIRIE, LA 70006 www.msmmengineering.com</p>			
<p>COASTAL PROTECTION AND RESTORATION AUTHORITY 150 TERRACE AVENUE BATON ROUGE, LOUISIANA 70802</p>			
<p>LOCATION MAP</p>	<p>DESIGNED BY: J.A.W. APPROVED BY: M.M.</p>		
<p>BAYOU SEGNETTE STATE PARK IMPROVEMENTS BOAT LAUNCH ENHANCEMENTS</p>	<p>STATE PROJECT NUMBER: BA-0213 DRAWN BY: E.M.C.</p>		
<p>DATE: MARCH, 2021</p>			
<p>SHEET 2 OF 26</p>			
REV.	DATE	DESCRIPTION	BY

SCALE: 1" = 40'-0"



REV.	DATE	DESCRIPTION	BY
0	20-JAN-20XX		

MSMM
ENGINEERING, LLC
4508 CLEARVIEW PKWY,
METAIRIE, LA 70006
www.msmmengineering.com

**COASTAL PROTECTION
AND RESTORATION
AUTHORITY**
150 TERRACE AVENUE
BATON ROUGE, LOUISIANA 70802

EXISTING
CONDITIONS -
BOAT LAUNCH
DESIGNED BY: J.A.W.
APPROVED BY: M.M.

BAYOU SEGNETTE
STATE PARK IMPROVEMENTS
BOAT LAUNCH ENHANCEMENTS
STATE PROJECT NUMBER: BA-0213
DRAWN BY: E.M.C.




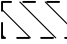
DATE: MARCH, 2021
SHEET 5 OF 26

STATE OF LOUISIANA
JAMES ANDREW WILSON
License No. 35456
PROFESSIONAL ENGINEER
3/9/2021

SCALE: 1" = 40'-0"

LAPALCO BLVD.

LEGEND

-  COLD MILL ASPHALT SURFACE FOR TRANSITION (BUTT JOINT) (SEE SHEET 11 FOR DETAILS) (NO DIRECT PAY)
-  CONCRETE REMOVAL
-  CURB REMOVAL
-  COLD MILL FULL DEPTH ASPHALT/AGGREGATE SURFACE

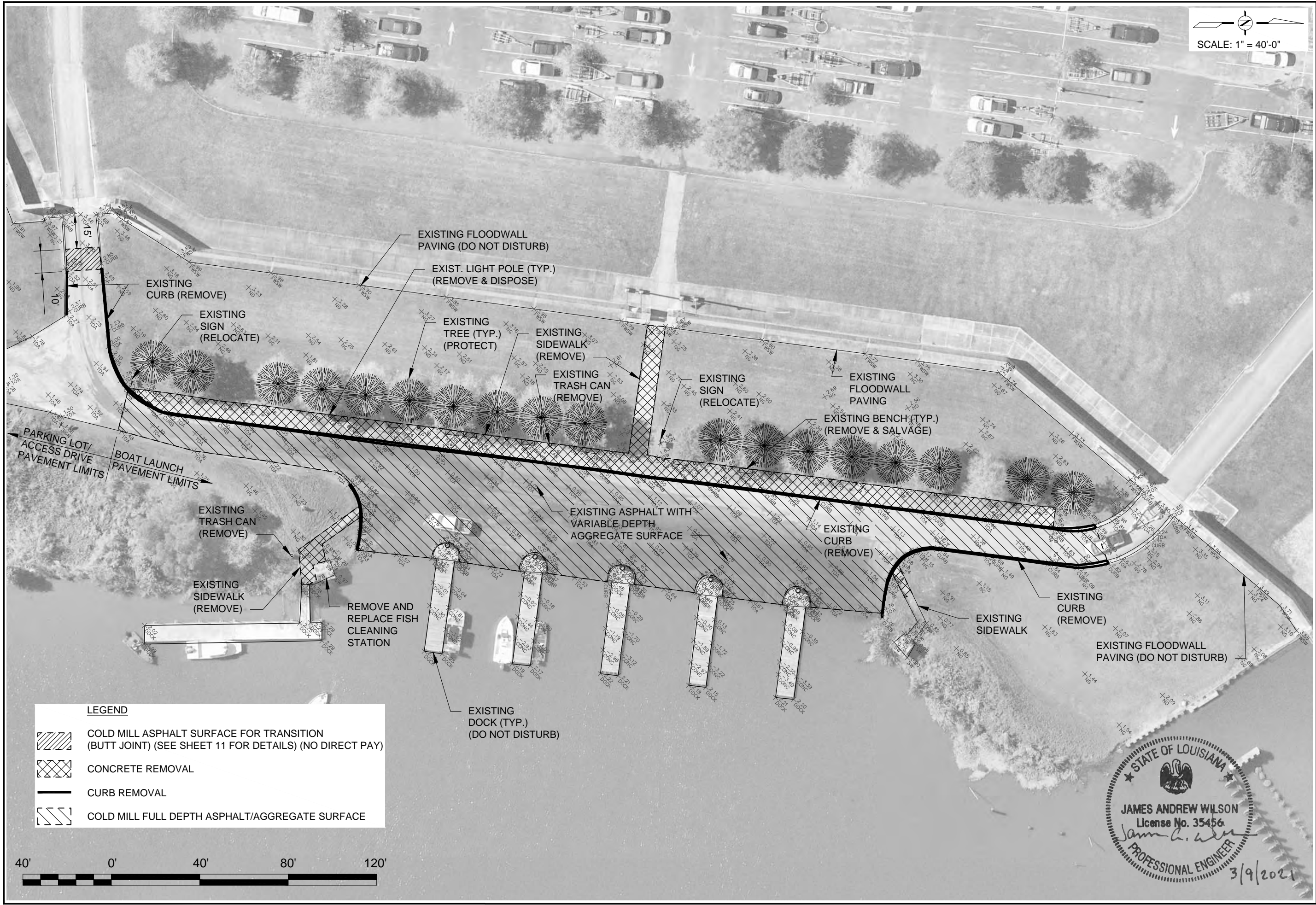


STATE OF LOUISIANA
 JAMES ANDREW WILSON
 License No. 35456
 PROFESSIONAL ENGINEER
 3/9/2021

NO.	DATE	DESCRIPTION	BY
0	20-JAN-20XX		
SUBMITTAL			
INT			

MSMM ENGINEERING, LLC 4508 CLEARVIEW PKWY, METAIRIE, LA 70006 www.msmmengineering.com	
COASTAL PROTECTION AND RESTORATION AUTHORITY 150 TERRACE AVENUE BATON ROUGE, LOUISIANA 70802	
BAYOU SEGNETTE STATE PARK IMPROVEMENTS BOAT LAUNCH ENHANCEMENTS	DEMOLITION PLAN - PARKING LOT
STATE PROJECT NUMBER: BA-0213 DRAWN BY: E.M.C.	DESIGNED BY: J.A.W. APPROVED BY: M.M.
DATE: MARCH, 2021	
SHEET 6 OF 26	

SCALE: 1" = 40'-0"



INT	DESCRIPTION	DATE	REV.
0	20-JAN-20XX		

MSMM
ENGINEERING, LLC
4508 CLEARVIEW PKWY.
METAIRIE, LA 70006
www.msmmengineering.com

**COASTAL PROTECTION
AND RESTORATION
AUTHORITY**
150 TERRACE AVENUE
BATON ROUGE, LOUISIANA 70802

DEMOLITION PLAN -
BOAT LAUNCH

DESIGNED BY: J.A.W.
APPROVED BY: M.M.

BAYOU SEGNETTE
STATE PARK IMPROVEMENTS
BOAT LAUNCH ENHANCEMENTS

STATE PROJECT NUMBER: BA-0213
DRAWN BY: E.M.C.

DATE: MARCH, 2021

SHEET 7 OF 26

STATE OF LOUISIANA
JAMES ANDREW WILSON
License No. 35456
PROFESSIONAL ENGINEER
3/9/2021

LEGEND

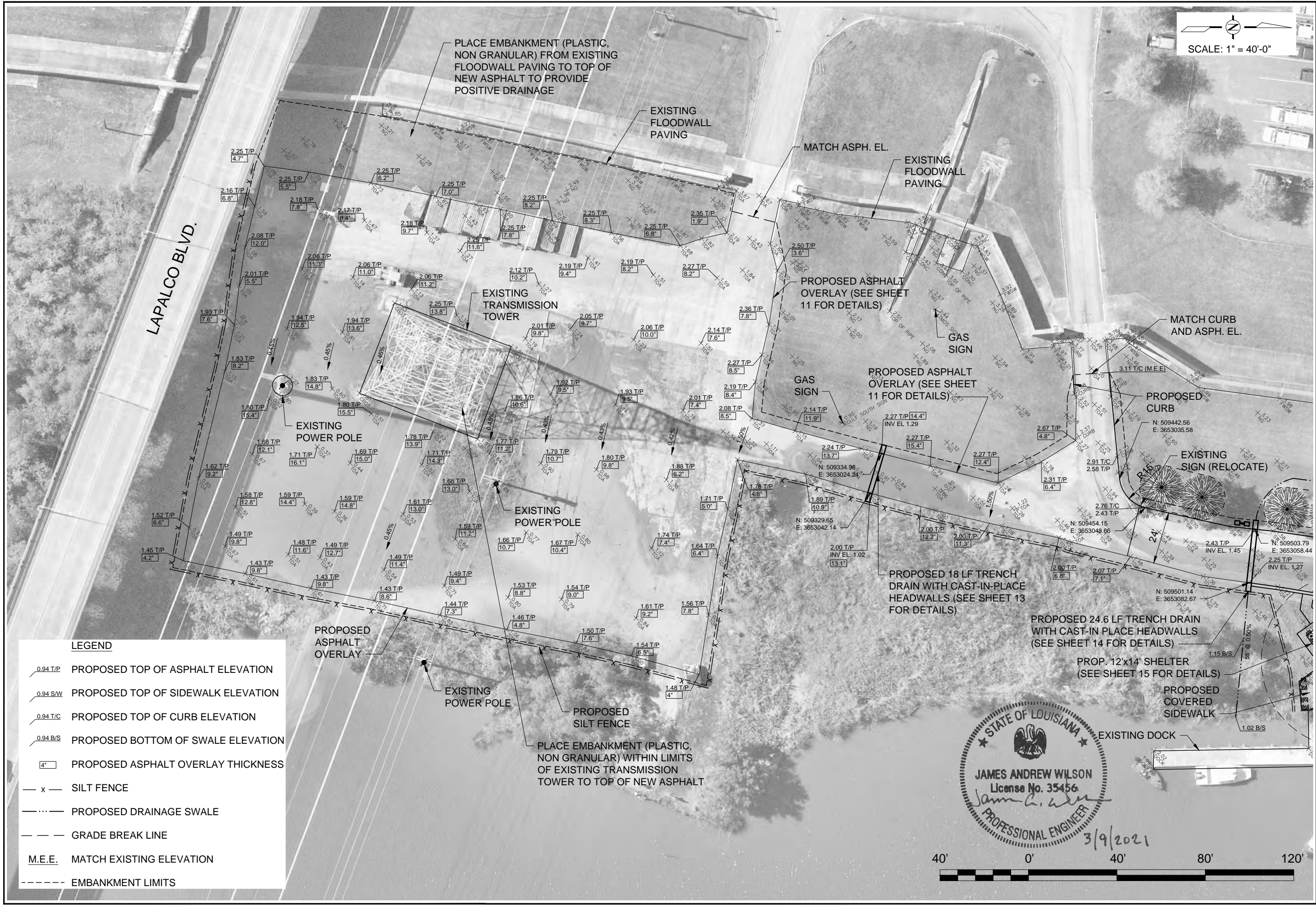
COLD MILL ASPHALT SURFACE FOR TRANSITION (BUTT JOINT) (SEE SHEET 11 FOR DETAILS) (NO DIRECT PAY)

CONCRETE REMOVAL

CURB REMOVAL

COLD MILL FULL DEPTH ASPHALT/AGGREGATE SURFACE

40' 0' 40' 80' 120'



SCALE: 1" = 40'-0"

LEGEND

- $\text{---}0.94\text{ T/P}$ PROPOSED TOP OF ASPHALT ELEVATION
- $\text{---}0.94\text{ S/W}$ PROPOSED TOP OF SIDEWALK ELEVATION
- $\text{---}0.94\text{ T/C}$ PROPOSED TOP OF CURB ELEVATION
- $\text{---}0.94\text{ B/S}$ PROPOSED BOTTOM OF SWALE ELEVATION
- $\text{---}4\text{---}$ PROPOSED ASPHALT OVERLAY THICKNESS
- $\text{---}x\text{---}$ SILT FENCE
- $\text{---}\cdot\text{---}$ PROPOSED DRAINAGE SWALE
- $\text{---}\text{---}$ GRADE BREAK LINE
- M.E.E. MATCH EXISTING ELEVATION
- $\text{---}\text{---}\text{---}$ EMBANKMENT LIMITS

SUBMITTAL	DATE	DESCRIPTION
0	20-JAN-20XX	

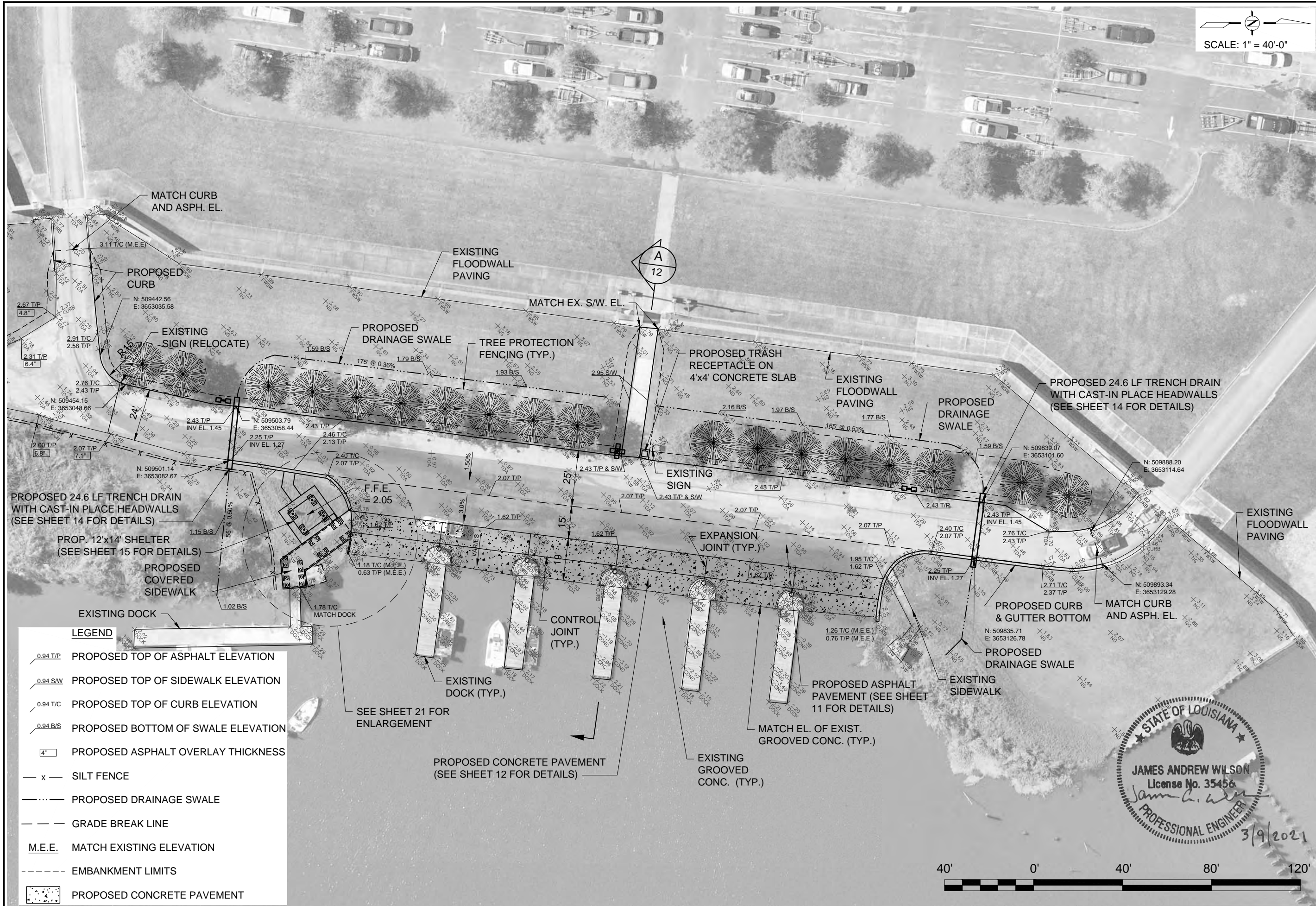
 MSMM ENGINEERING, LLC 4508 CLEARVIEW PKWY, METAIRIE, LA 70006 www.msmmengineering.com	COASTAL PROTECTION AND RESTORATION AUTHORITY 150 TERRACE AVENUE BATON ROUGE, LOUISIANA 70802
--	---

PROPOSED SITE PLAN - PARKING LOT	DESIGNED BY: J.A.W. APPROVED BY: M.M.
--	--

BAYOU SEGNETTE STATE PARK IMPROVEMENTS BOAT LAUNCH ENHANCEMENTS	STATE PROJECT NUMBER: BA-0213 DRAWN BY: E.M.C.
---	---

DATE: MARCH, 2021
SHEET 8 OF 26

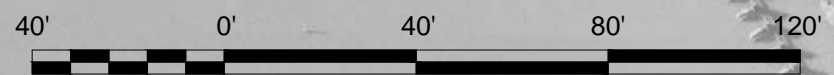
SCALE: 1" = 40'-0"



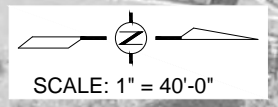
LEGEND

	PROPOSED TOP OF ASPHALT ELEVATION
	PROPOSED TOP OF SIDEWALK ELEVATION
	PROPOSED TOP OF CURB ELEVATION
	PROPOSED BOTTOM OF SWALE ELEVATION
	PROPOSED ASPHALT OVERLAY THICKNESS
	SILT FENCE
	PROPOSED DRAINAGE SWALE
	GRADE BREAK LINE
	MATCH EXISTING ELEVATION
	EMBANKMENT LIMITS
	PROPOSED CONCRETE PAVEMENT

STATE OF LOUISIANA
 JAMES ANDREW WILSON
 License No. 35456
 Professional Engineer
 3/9/2021



INT	DATE	DESCRIPTION	BY
0	20-JAN-20XX		
 MSMM ENGINEERING, LLC 4508 CLEARVIEW PKWY, METAIRIE, LA 70006 www.msmmengineering.com			
COASTAL PROTECTION AND RESTORATION AUTHORITY 150 TERRACE AVENUE BATON ROUGE, LOUISIANA 70802			
PROPOSED BAYOU SEGNETTE STATE PARK IMPROVEMENTS BOAT LAUNCH ENHANCEMENTS		SITE PLAN - BOAT LAUNCH	
STATE PROJECT NUMBER: BA-0213		DESIGNED BY: J.A.W. APPROVED BY: M.M.	
DATE: MARCH, 2021 SHEET 9 OF 26			

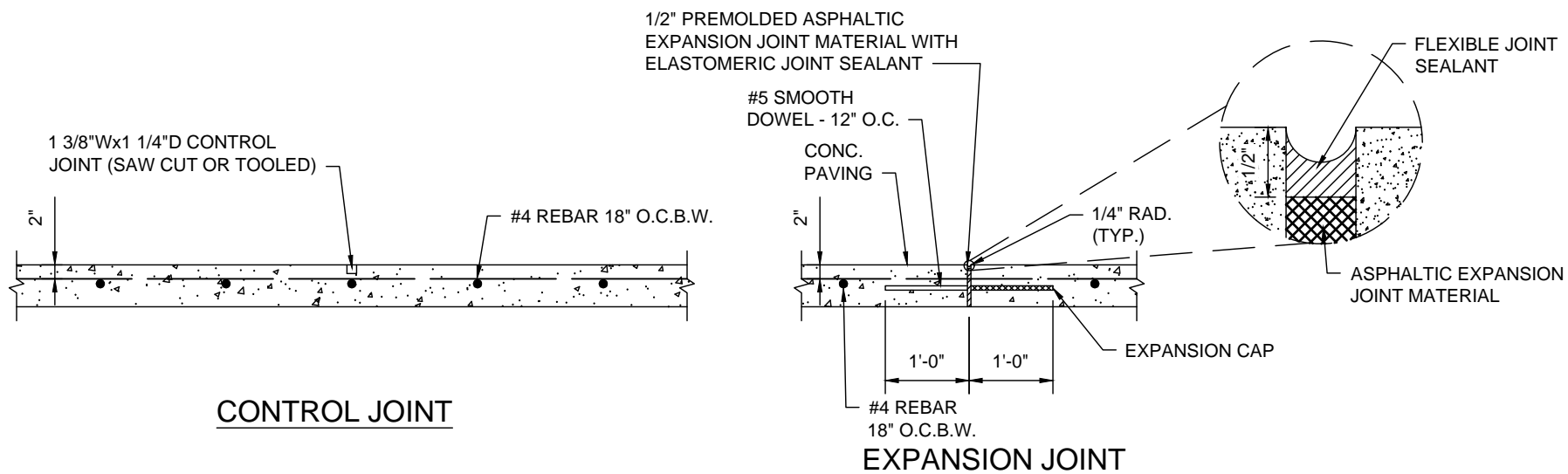


NOTE:
1. SEE SHEETS 19 AND 20 FOR ELECTRICAL DETAILS.

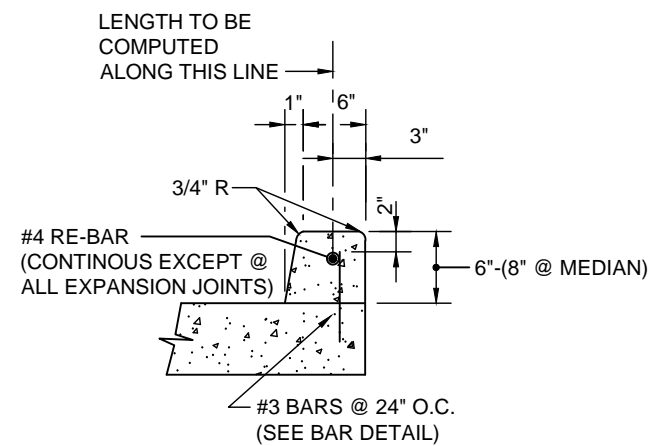


STATE OF LOUISIANA
HENRY G. HAWNEY
License No. 19229
PROFESSIONAL ENGINEER
Henry G. Hawney
ELECTRICAL ENGINEER
3-9-2021

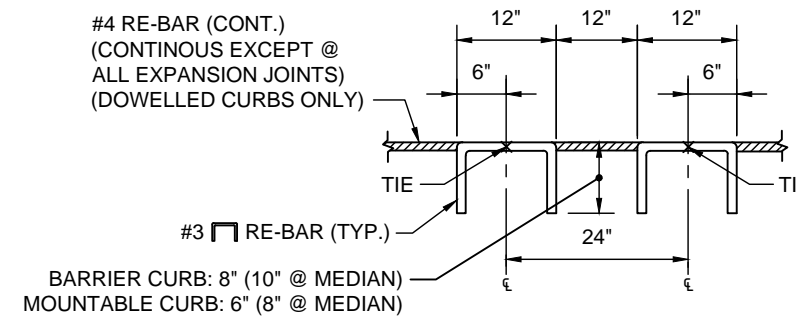
INT					
SUBMITTAL					
0	20-JAN-20XX				
				REV.	DATE
 MSMM ENGINEERING, LLC 4508 CLEARVIEW PKWY, METAIRIE, LA 70006 www.msmmengineering.com		COASTAL PROTECTION AND RESTORATION AUTHORITY 150 TERRACE AVENUE BATON ROUGE, LOUISIANA 70802			
BAYOU SEGNETTE STATE PARK IMPROVEMENTS BOAT LAUNCH ENHANCEMENTS		PROPOSED LIGHTING SITE PLAN			
STATE PROJECT NUMBER: BA-0213 DRAWN BY: E.M.C.		DESIGNED BY: J.A.W. APPROVED BY: M.M.			
DATE: MARCH, 2021					
SHEET 10 OF 26					



CONTROL AND EXPANSION JOINT DETAILS
SCALE: 1/2" = 1'-0"

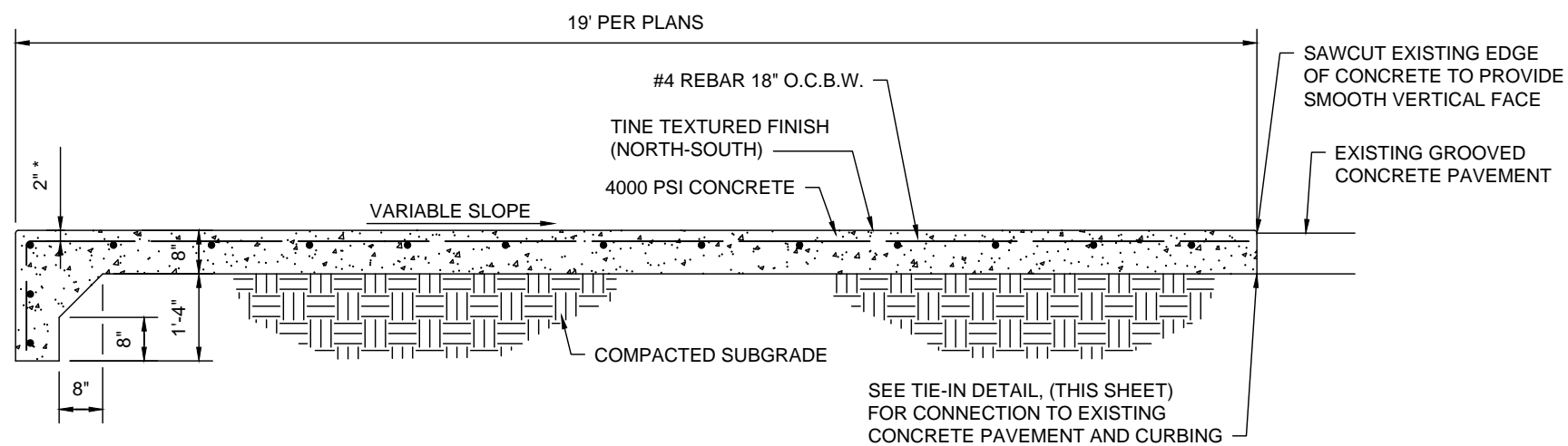


DOWELED BARRIER CURB
SCALE: N.T.S.



BAR DETAIL
SCALE: N.T.S.

- NOTE:**
- SHOWING DIMENSIONS AND SPACING OF DEF. REINF STEEL BARS FOR CONC. CURB

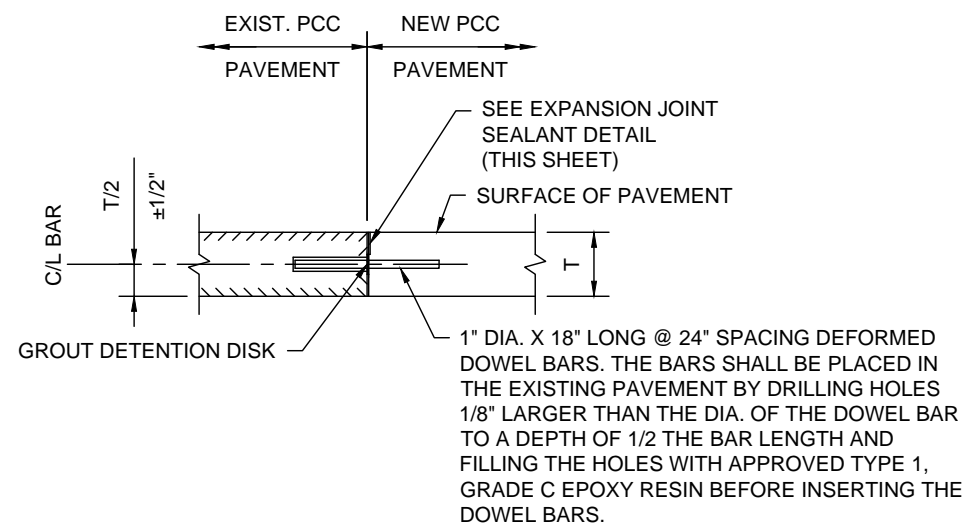


CONCRETE PAVEMENT DETAIL
SCALE: 3/8" = 1'-0"

* CONTRACTOR SHALL BE REQUIRED TO USE CHAIRS TO ENSURE CONSISTENT DEPTH OF BARS IN THE SLAB

NOTE:

- PLACEMENT OF CONCRETE PAVEMENT SHALL BE IN THE DRY.



TIE-IN AT EXISTING CONCRETE DETAIL
SCALE: 1/2" = 1'-0"

NO.	DATE	REV.	DESCRIPTION
0	20-JAN-20XX		

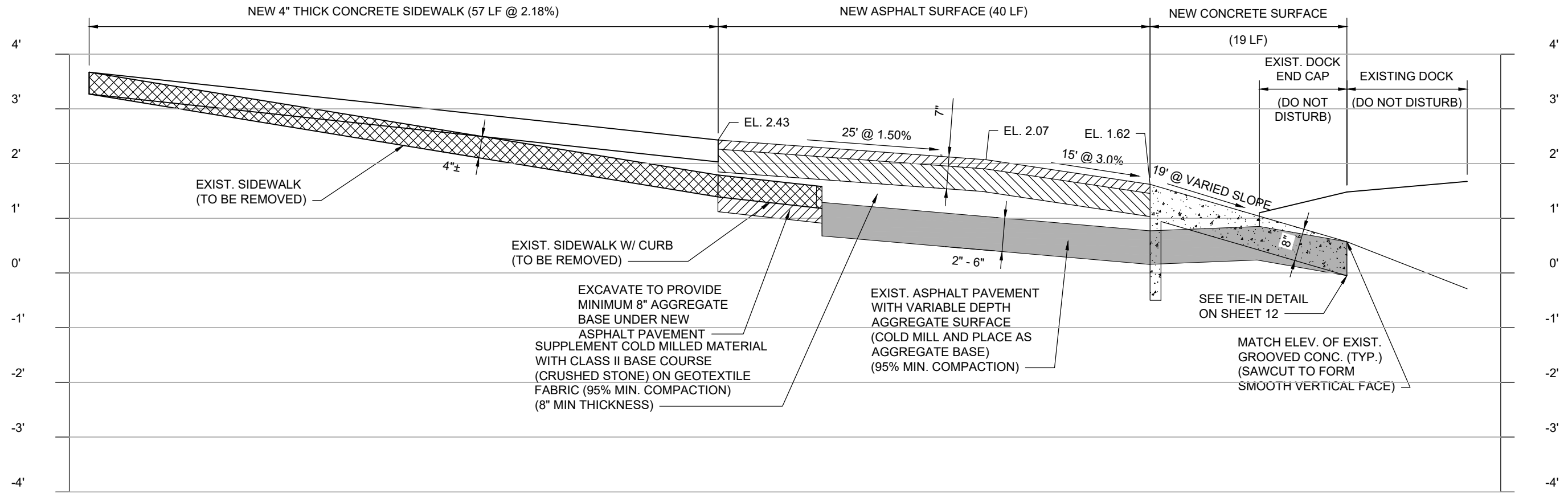
INT			
SUBMITTAL			

MSMM ENGINEERING, LLC 4508 CLEARVIEW PKWY. METAIRIE, LA 70006 www.msmmengineering.com	COASTAL PROTECTION AND RESTORATION AUTHORITY 150 TERRACE AVENUE BATON ROUGE, LOUISIANA 70802
--	--

CONCRETE PAVEMENT DETAILS	DESIGNED BY: J.A.W.	APPROVED BY: M.M.
BAYOU SEGNETTE STATE PARK IMPROVEMENTS BOAT LAUNCH ENHANCEMENTS	STATE PROJECT NUMBER: BA-0213	DRAWN BY: E.M.C.

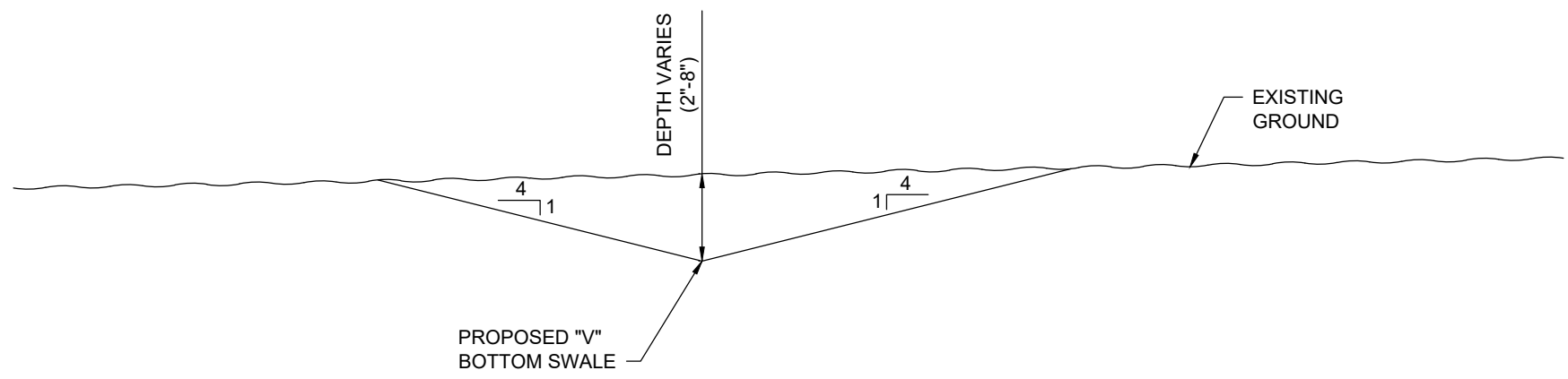
DATE: MARCH, 2021

SHEET 12 OF 26

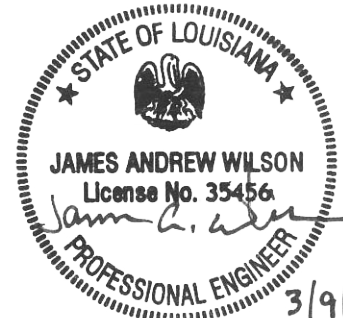


SECTION A
9

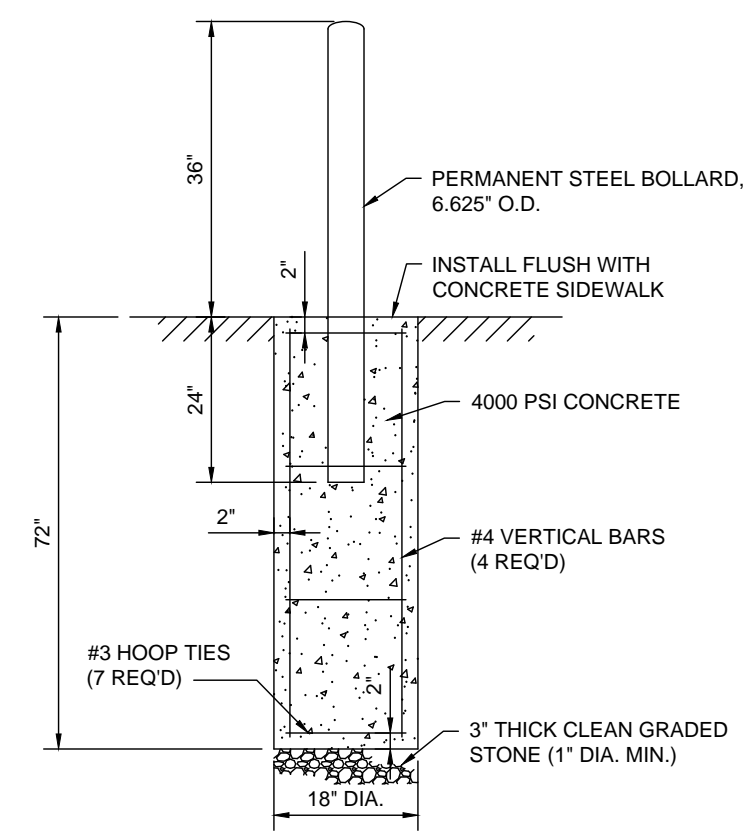
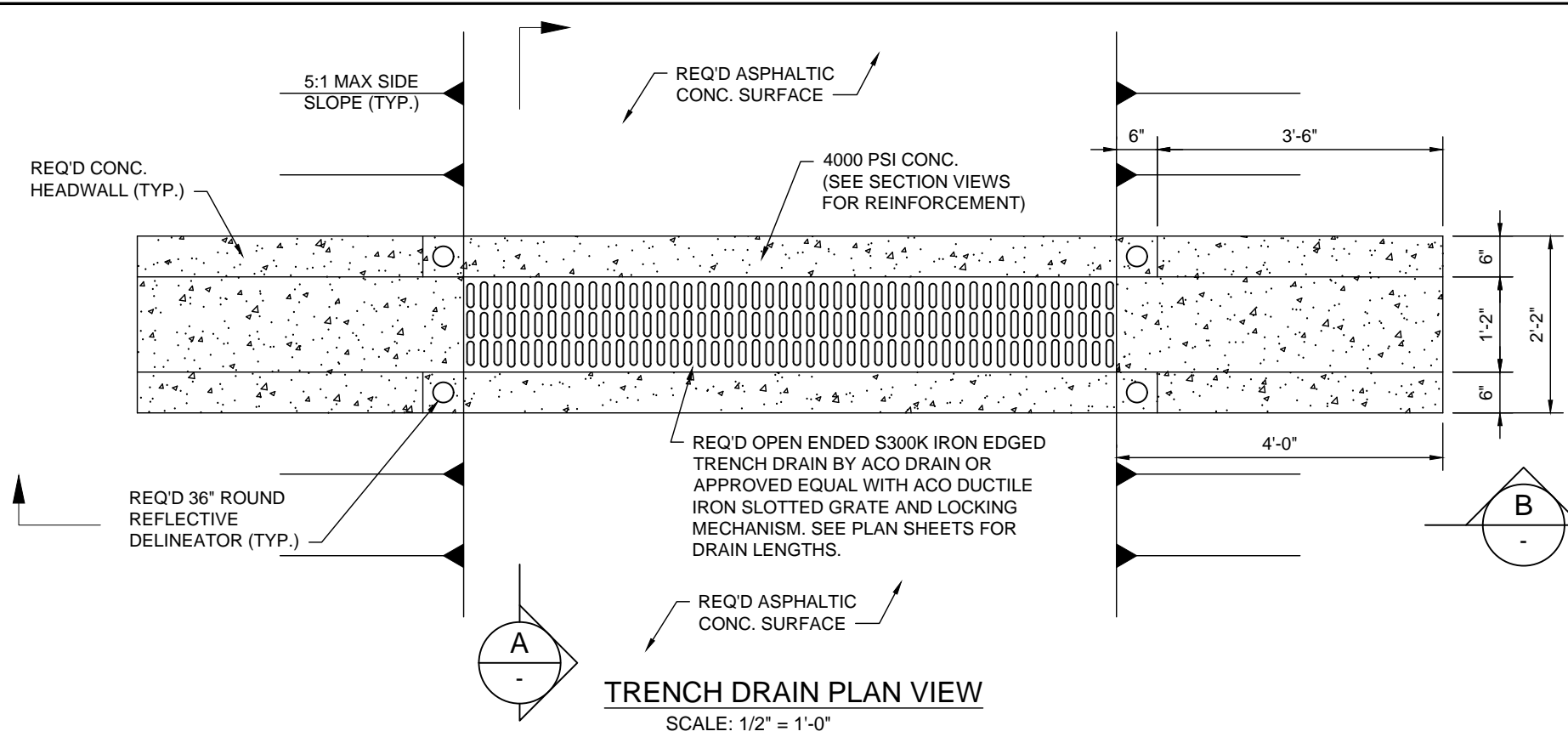
SCALE: 1" = 10' HOR.
1" = 2' VERT.



DRAINAGE SWALE TYPICAL SECTION
SCALE: NTS

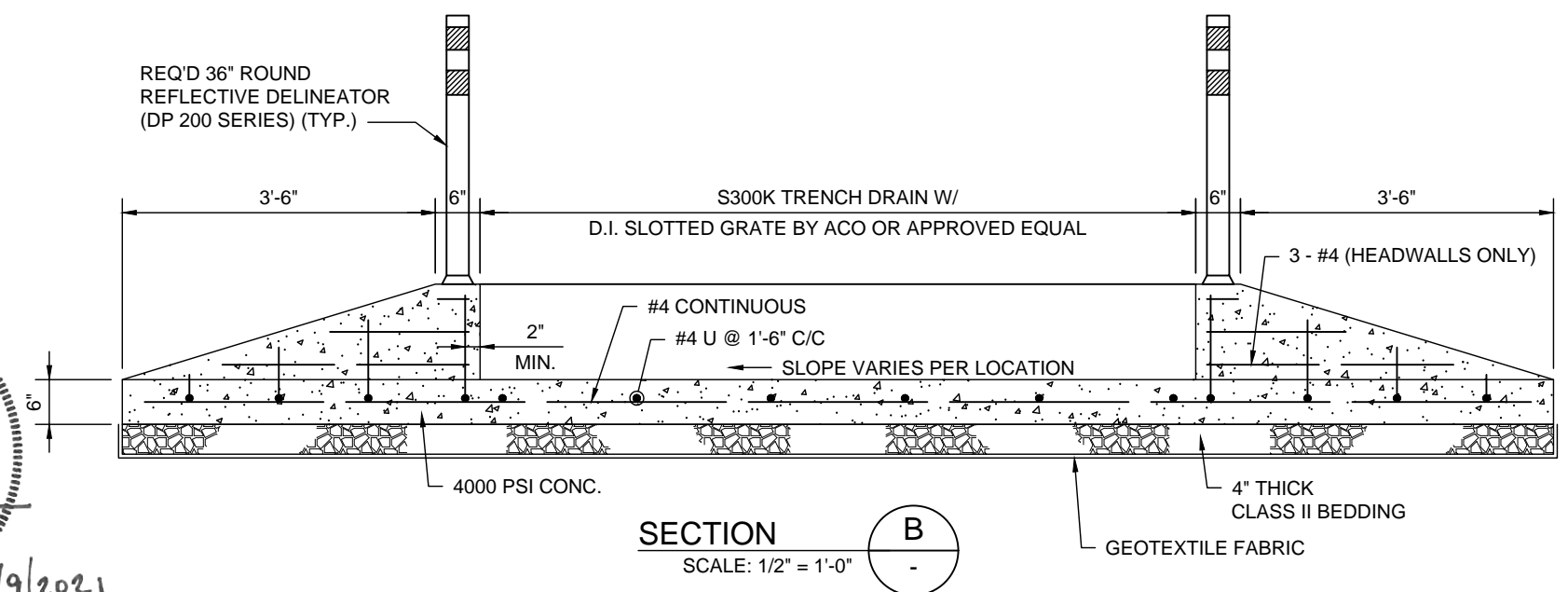
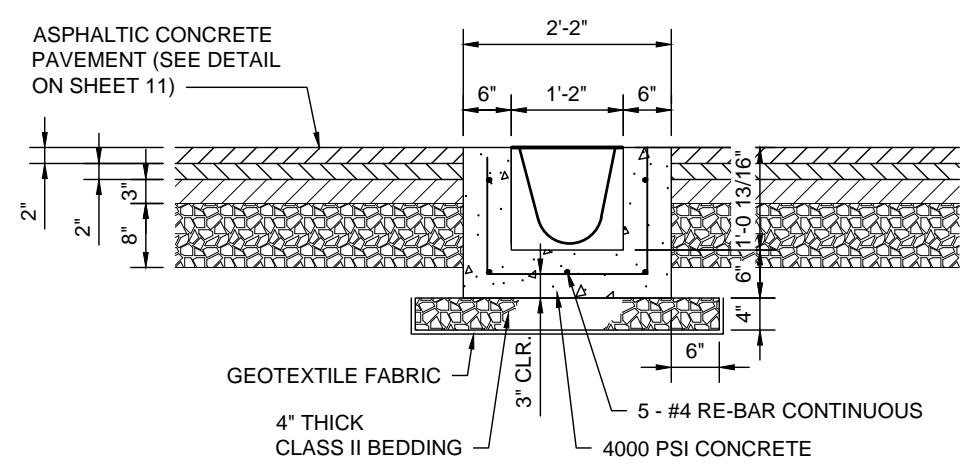


INT						
SUBMITTAL						
0	20-JAN-20XX					
				REV.	DATE	DESCRIPTION
MSMM ENGINEERING, LLC 4508 CLEARVIEW PKWY. METAIRIE, LA 70006 www.msmmengineering.com						
COASTAL PROTECTION AND RESTORATION AUTHORITY 150 TERRACE AVENUE BATON ROUGE, LOUISIANA 70802						
PAVEMENT SECTION AT BOAT LAUNCH			DESIGNED BY: J.A.W. APPROVED BY: M.M.			
BAYOU SEGNETTE STATE PARK IMPROVEMENTS BOAT LAUNCH ENHANCEMENTS			STATE PROJECT NUMBER: BA-0213 DRAWN BY: E.M.C.			
DATE: MARCH, 2021						
SHEET 13 OF 26						



BOLLARD NOTES:

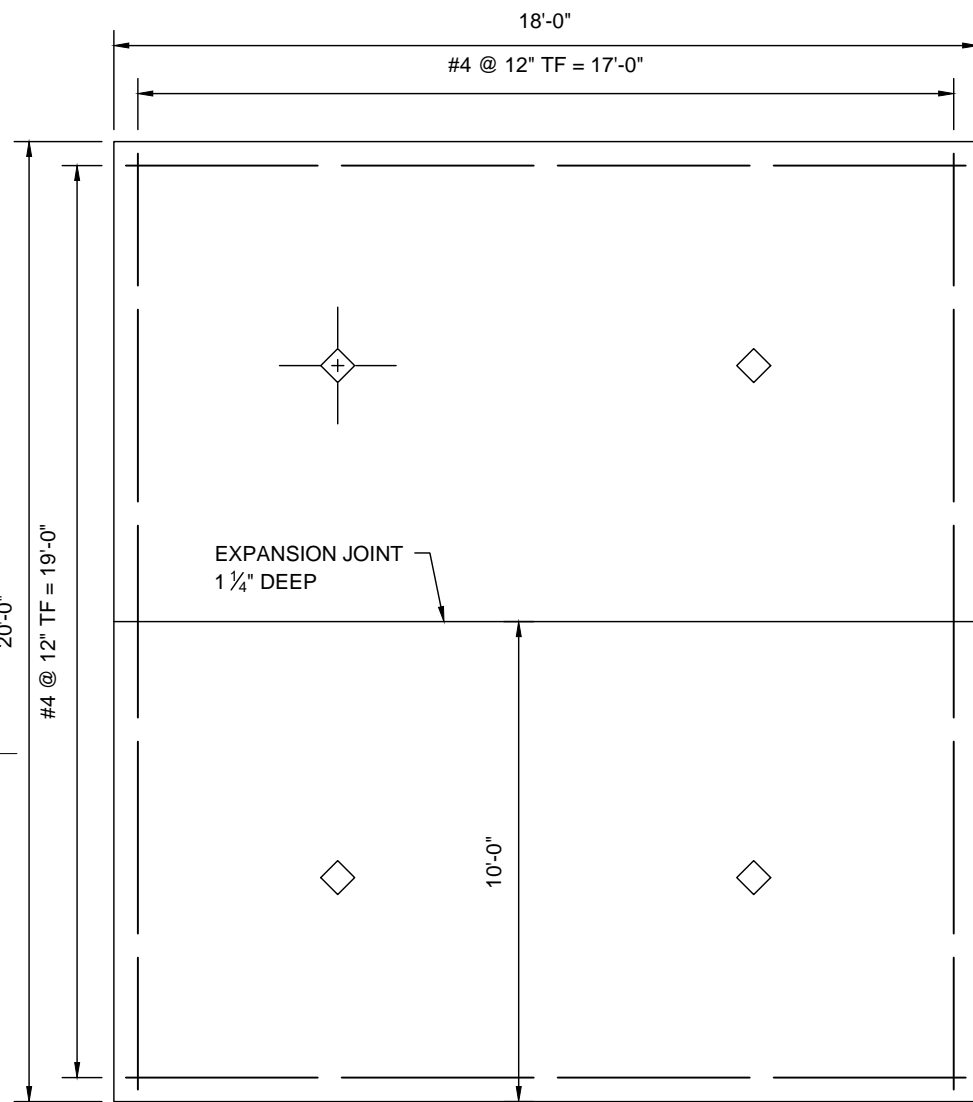
- ALL BOLLARD SURFACES SHALL BE PRIMED WITH RUST AND CORROSION RESISTANT, ZINC RICH PRIMER WITH 5000 HOUR SALT SPRAY PERFORMANCE.
- BOLLARD STANDARD FINISH SHALL BE TGIC POLYESTER OUTDOOR FINISH RAL 1028 YELLOW. TGIC POLYESTER POWDER SHALL MEET DECORATIVE AND FUNCTIONAL REQUIREMENTS FOR GLOSS RETENTION, PHYSICAL PROPERTIES, CHEMICAL RESISTANCE AND WEATHERABILITY.
- BOLLARD SHALL CONSIST OF STEEL TUBING MEETING THE REQUIREMENTS OF ASTM A513 TYPE I.
- BOLLARDS SHALL BE BY TRAFFIC GUARD OR APPROVED EQUAL.



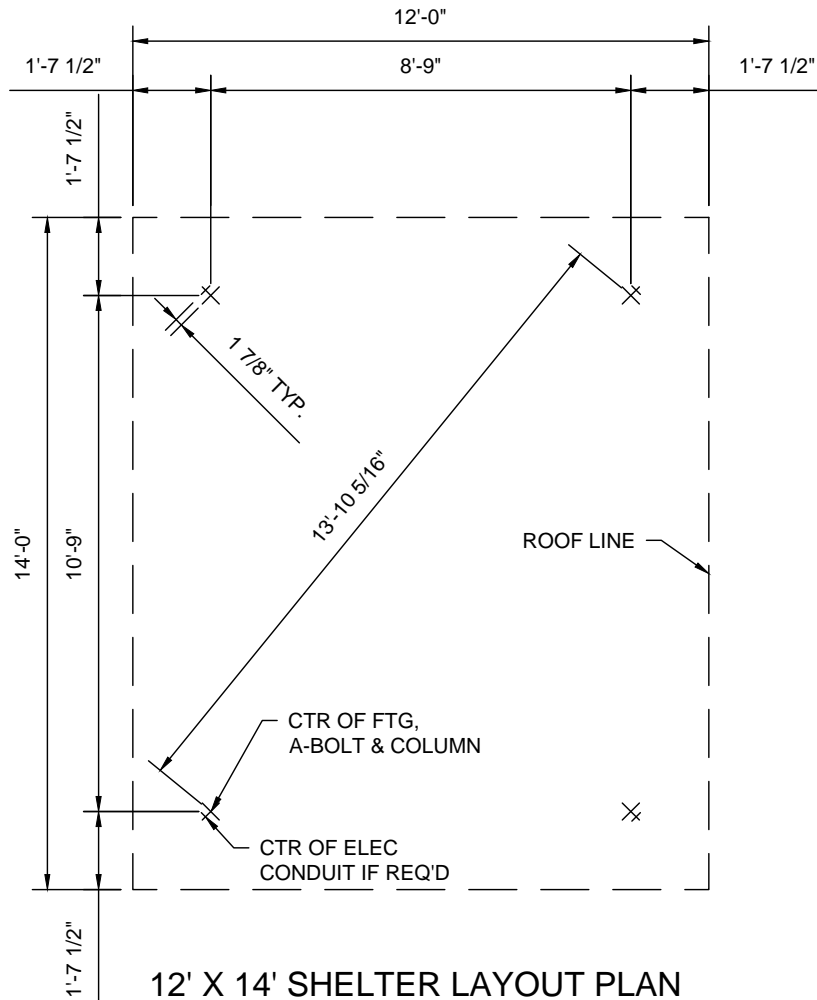
STATE OF LOUISIANA

JAMES ANDREW WILSON
 License No. 35456
 PROFESSIONAL ENGINEER
 3/9/2021

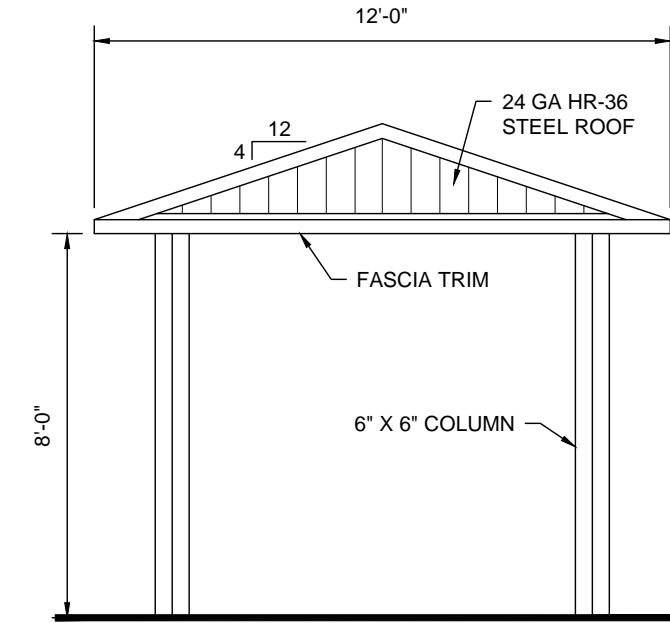
INT	SUBMITTAL	REV.	DATE	DESCRIPTION
0	20-JAN-20XX			
 MSMM ENGINEERING, LLC 4508 CLEARVIEW PKWY., METAIRIE, LA 70006 www.msmmengineering.com				
COASTAL PROTECTION AND RESTORATION AUTHORITY 150 TERRACE AVENUE BATON ROUGE, LOUISIANA 70802				
TRENCH DRAIN DETAILS				
BAYOU SEGNETTE STATE PARK IMPROVEMENTS BOAT LAUNCH ENHANCEMENTS				
STATE PROJECT NUMBER: BA-0213		DESIGNED BY: J.A.W.		APPROVED BY: M.M.
DRAWN BY: E.M.C.				
DATE: MARCH, 2021				
SHEET 14 OF 26				



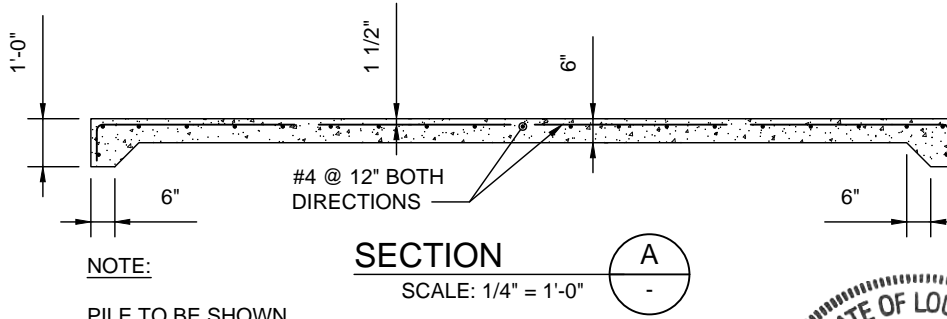
12' X 14' SHELTER FOUNDATION PLAN
SCALE: 1/4" = 1'-0"



12' X 14' SHELTER LAYOUT PLAN
SCALE: N.T.S.

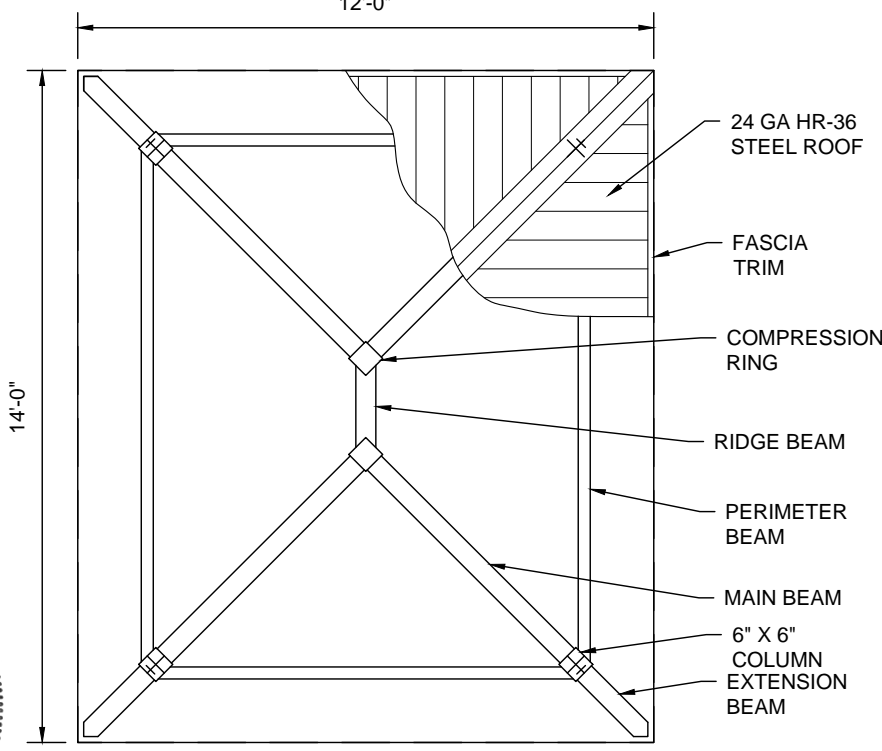


12' X 14' SHELTER END ELEVATION
SCALE: N.T.S.

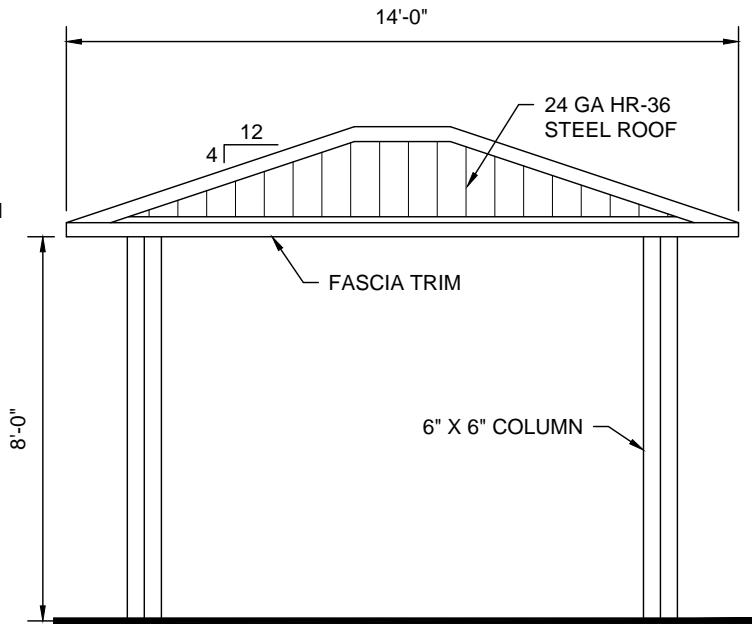


SECTION A-A
SCALE: 1/4" = 1'-0"

NOTE:
PILE TO BE SHOWN
ON NEXT SUBMITTAL



12' X 14' SHELTER PLAN VIEW
SCALE: N.T.S.



12' X 14' SHELTER ELEVATION
SCALE: N.T.S.



INT	BY	DESCRIPTION	DATE	REV.
0				
SUBMITTAL				
20-JAN-20XX				
MSMM ENGINEERING, LLC 4508 CLEARVIEW PKWY, METAIRIE, LA 70006 www.msmengineering.com				
COASTAL PROTECTION AND RESTORATION AUTHORITY 150 TERRACE AVENUE BATON ROUGE, LOUISIANA 70802				
12' X 14' SHELTER DETAILS DESIGNED BY: J.A.W. APPROVED BY: M.M.				
BAYOU SEGNETTE STATE PARK IMPROVEMENTS BOAT LAUNCH ENHANCEMENTS STATE PROJECT NUMBER: BA-0213 DRAWN BY: E.M.C.				
DATE: MARCH, 2021				
SHEET 15 OF 26				

GENERAL NOTES

1. ALL STRUCTURES SHALL BE DESIGNED AND FABRICATED TO THE IBC (LATEST EDITION) OR CURRENT LOCAL BUILDING CODE WITH STANDARD LOAD DESIGNS OF THE GREATER VALUE OF 20# PER S.F. MINIMUM LIVE LOAD AND 100 MPH SUSTAINED WIND LOAD OR SITE SPECIFIC CONDITIONS AND THE APPLICABLE ONE FOR SEISMIC LOADS.
2. ALL MEMBERS SHALL BE DESIGNED ACCORDING TO THE "AMERICAN INSTITUTE OF STEEL CONSTRUCTION (AISC)" SPECIFICATIONS AND THE AMERICAN IRON AND STEEL INSTITUTE (AISI) SPECIFICATIONS FOR COLD-FORMED MEMBERS.
3. ALL FABRICATION WELDS SHALL BE IN STRICT ACCORDANCE WITH THE STRUCTURAL WELDING CODE OF THE AMERICAN WELDING SOCIETY (AWS) SPECIFICATIONS. ALL STRUCTURAL WELDS SHALL BE IN COMPLIANCE WITH THE REQUIREMENTS OF "PRE-QUALIFIED" WELDED JOINTS. ALL WELDING SHALL CONFORM TO ASTM A-233 SERIES E-70XX ELECTRODES - LOW HYDROGEN. FIELD WELDING SHALL NOT BE REQUIRED.
4. WHEN REQUIRED, AFTER AWARD OF BID, THE SHADE STRUCTURE MANUFACTURER SHALL SUBMIT STRUCTURAL CALCULATIONS, SEALED BY A REGISTERED ENGINEER IN THE STATE IN WHICH THE STRUCTURE IS TO BE ERECTED FOR REVIEW AND APPROVAL BY THE APPROVING AGENCY
5. MANUFACTURER QUALIFICATIONS: ALL MANUFACTURERS SHALL HAVE A MINIMUM OF (20) TWENTY YEARS EXPERIENCE IN THE FABRICATIONS OF TUBULAR STEEL SHADE STRUCTURES. SHADE STRUCTURE AND KIOSK FABRICATION SHALL BE THE MANUFACTURER'S PRIMARY BUSINESS. MANUFACTURER SHALL HAVE FABRICATED SIMILAR STRUCTURES TO THAT WHICH IS SPECIFIED. ALL NON-SPECIFIED MANUFACTURERS SHALL SUBMIT COMPLETE SHOP DRAWINGS INDICATING TYPE, SIZE & GAUGE OF MATERIAL USED, WITH DETAILED CONNECTIONS TO THE SPECIFYING AGENCY OR DESIGN FIRM AT LEAST 10 DAYS PRIOR APPROVAL WILL BE REJECTED.

FOOTINGS AND COLUMNS

1. FOOTINGS SHALL BE STRUCTURALLY ENGINEERED BY THE STRUCTURE MANUFACTURER TO MEET LOCAL CODES AND SITE CONDITIONS. (SAMPLE FOOTING DRAWINGS SHALL BE MADE AVAILABLE TO THE CONTRACTOR OR OWNER FROM THE MANUFACTURER). WHEN REQUIRED FOR STRUCTURE INSTALLATION, ANCHOR AND BOLTS SHALL BE SUPPLIED BY THE OWNER/CONTRACTOR. COLUMNS SHALL BE ASTM 500 GRADE B. CONCRETE FOOTING REBAR (IF REQUIRED) SHALL BE ASTM A-615 GRADE 40 #4 BARS & SMALLER, GRADE 60 #5 & LARGER. CONCRETE SHALL BE 5 SACK MIX "PORTLAND" CEMENT. MAXIMUM SLUMP SHALL NOT EXCEED 4". CONCRETE COMPRESSIVE STRENGTH SHALL BE A MINIMUM OF 2500 PSI @ 28 DAYS.

FRAME MEMBERS AND COMPRESSION RING

1. 90% AMERICAN (DOMESTIC) MADE STEEL SHALL BE USED IN THE CONSTRUCTION OF THIS SHELTER. MILL CERTIFICATION SHALL BE MADE AVAILABLE UPON REQUEST. ALL FRAME MEMBERS SHALL BE ONE PIECE STRUCTURAL STEEL TUBE WITH A MINIMUM .120 ($\frac{1}{8}$ ") WALL THICKNESS, SIZED ACCORDING TO ENGINEERING. ALL FRAME MEMBERS SHALL BE BOLTED TOGETHER WITH BOLTS TOTALLY CONCEALED. ALL TUBING FOR FRAME MEMBERS SHALL BE ASTM 500 GRADE B. BEAM END PLATES SHALL BE ASTM A36 FY= 36,000 PSI UNO. BOLTS SHALL BE A 307'S, OR 325'S UNLESS NOTED OTHERWISE. "I" BEAMS, ANGLE IRON, "C", "Z" OR "S" PURLINS OR BEAMS, OPEN OR CLOSED, SHALL NOT BE ALLOWED.

ROOFING

1. ALL ROOFING SHALL BE 24 GAUGE ZINCALUME / GALVALUME COATED STEEL PANELS, ICBO #ER-2757. "HR-36 PANELS SHALL BE 36" WIDE WITH 1 $\frac{1}{2}$ " HIGH RIBS @ 7.2". ALL ROOFING SHALL BE PRE-FINISHED WITH PVF2 (POLYVINYLIDENE FLUORIDE) KYNAR 500 ON THE TOP SIDE. ALL ROOF PANELS SHALL BE PRE-CUT WITH RIBS RUNNING WITH THE SLOPE OF THE ROOF. ROOF FASCIA TRIM SHALL BE 3 $\frac{1}{2}$ " SQUARE FASCIA TRIM 24 GAUGE ZINCALUME / GALVALUME COATED PRE-FINISHED MATCHING THE ROOF COLOR. SCREWS & RIVETS SHALL MATCH ROOF COLOR. NO EXCEPTIONS TAKEN FOR ROOF TYPE OR TRIM.

POWDER COATING

1. ALL FRAME MEMBERS SHALL BE MEDIA BLASTED TO A WHITE FINISH REMOVING ALL RUST, SCALE, OIL AND GREASE. POWDER COATINGS FOR ALL FRAME MEMBERS SHALL BE PROVISIONALLY WARRANTED FOR (5) FIVE YEARS WITH TRUZING 7520-70138 PRIMER WITH A DRY FILM THICKNESS OF (2.0-6.0 MILS) & HARDNESS OF 2H-3H WITH A SALT SPRAY RESISTANCE OF 6000 HOURS AND SUPER DURABLE GLOSS POLYESTER 9000 SERIES FINISH PAINT (2.5-3.5 MILS) WITH A HARDNESS OF H-H2 & HAS 1000 HOUR SALT SPRAY RESISTANCE. TOTAL OF PRIMER & FINISH PAINT SHALL BE 4.5-9.5 MILS OF PAINT. FINISH SHALL BE SMOOTH UNIFORM SURFACE WITH NO PITS, RUNS OR SAGS. FOR ADDITIONAL INFORMATION, PLEASE VISIT [HTTP://WWW.TCIPOWDER.COM/](http://www.tci powder.com/) FOR A COMPLETE LIST OF SPECIFICATIONS.

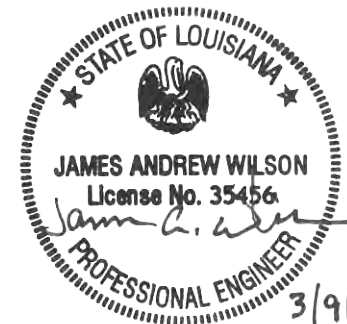
ERECTION

1. MANUFACTURER SHALL SUPPLY COMPLETE LAYOUT AND DETAIL PLANS WITH INSTALLATION INSTRUCTIONS FOR THE STRUCTURE. THE STRUCTURE SHALL BE ERECTED IN A WORK-MAN-LIKE MANNER WITH FRAMING, ROOFING AND TRIM INSTALLED ACCORDING TO THE MANUFACTURER'S INSTALLATION INSTRUCTIONS. CARE SHALL BE TAKEN TO AVOID DAMAGING THE STRUCTURE DURING INSTALLATION. TOUCH UP POWDER COAT PAINT WITH PAINT PROVIDED TO PREVENT RUSTING. COMPONENTS OF THE STRUCTURE SHALL BE COVERED AND KEPT DRY PRIOR TO ERECTION.

WARRANTY

1. MANUFACTURER SHALL WARRANTY THE STRUCTURE TO BE FREE FROM DEFECTS IN MATERIAL AND WORK-MAN-SHIP FOR A PERIOD OF (10) TEN YEARS FROM DATE OF ACCEPTANCE BY OWNER. WARRANTY DOES NOT INCLUDE DAMAGE FROM THEFT, FIRE, VANDALISM OR ACTS OF GOD. MANUFACTURER SHALL REPAIR OR REPLACE STRUCTURE COMPONENTS OF LIKE KIND AT HIS OPTION, TO MATCH EXISTING MATERIAL AND WORKMANSHIP. STEEL ROOF FINISH SHALL BE WARRANTED FOR (30) THIRTY YEARS UNDER A SEPARATE ROOF MANUFACTURER'S WARRANTY. POWDER COAT PAINT SHALL BE WARRANTED FOR (5) FIVE YEARS AFTER ACCEPTANCE FROM OWNER AGAINST PEELING, FLAKING AND RUSTING. WARRANTY DOES NOT COVER DAMAGE CAUSED FROM SHIPPING, ERECTION OF STRUCTURE, LACK OF TOUCHUP AND MAINTENANCE. OVERSPRAY FROM LAWN SPRINKLERS OR VANDALISM. BOLT THREADS ARE NOT POWDER COATED AND THEREFORE ARE NOT COVERED UNDER THE POWDER COAT WARRANTY.

NOTE: ENGINEERING SPECIFICATIONS TAKE PRECEDENCE OVER DRAWINGS IF DIFFERENCES OCCUR.



**COASTAL PROTECTION
AND RESTORATION
AUTHORITY**
150 TERRACE AVENUE
BATON ROUGE, LOUISIANA 70802

SHELTER NOTES

DESIGNED BY: J.A.W.
APPROVED BY: M.M.

BAYOU SEGNETTE
STATE PARK IMPROVEMENTS
BOAT LAUNCH ENHANCEMENTS

STATE PROJECT NUMBER: BA-0213
DRAWN BY: E.M.C.

DATE: MARCH, 2021

SHEET 16 OF 26

REV.	DATE	DESCRIPTION	BY

MODEL #508 CONCRETE WASTE RECEPTACLE WITH LOCKABLE LATCH HANDLE

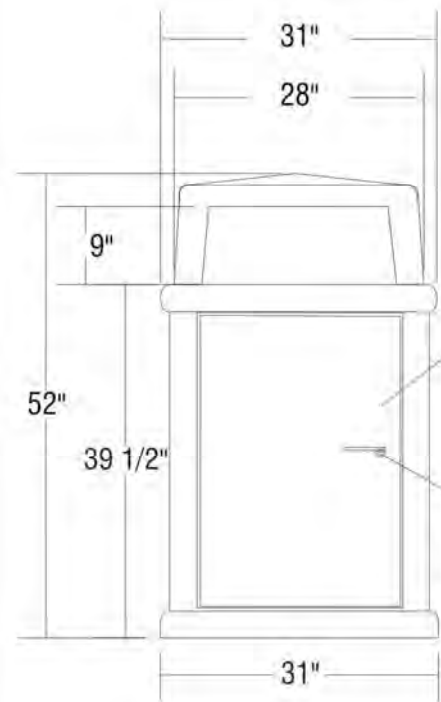
OUTDOOR CREATIONS, INC.

SCALE: 1" = 24"

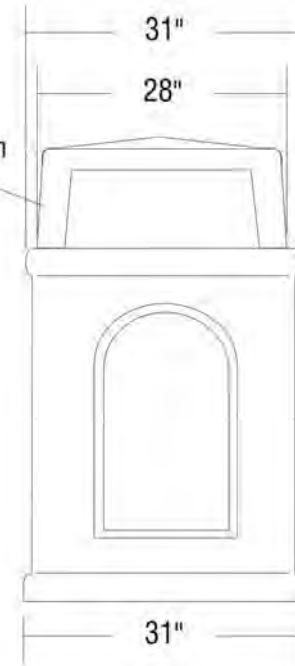
DATE:

DRAWN BY: MNC

FRONT ELEVATION

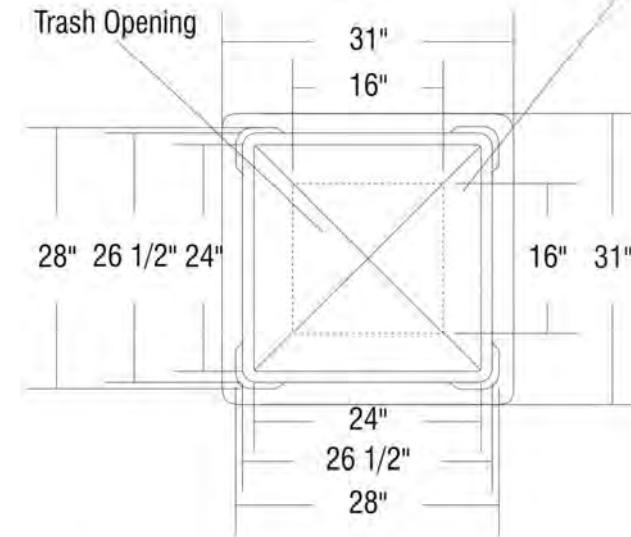


SIDE ELEVATION



Concrete Dome Lid - Attaches to main body with (4) coil rods epoxied into corresponding grout pockets in lower cabinet.

PLAN



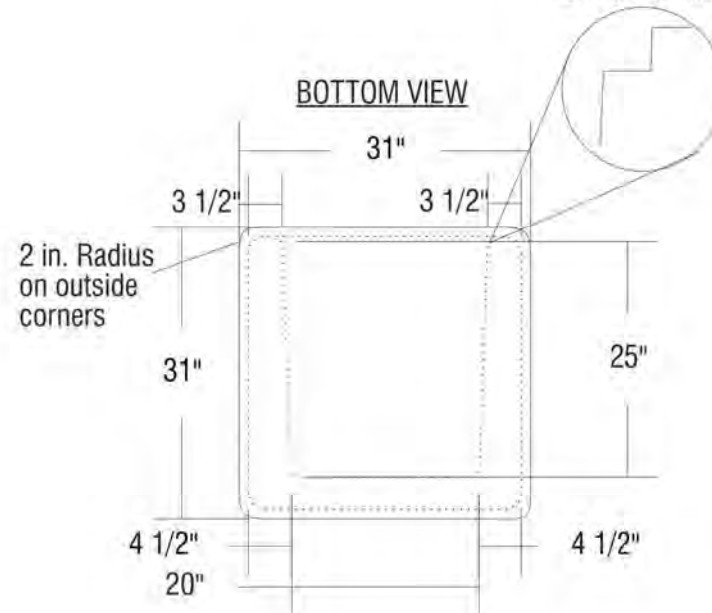
Precast Concrete top with 360 degree access

3/16" powder coated steel door color "Bronze"

Door Handle locked with external lock (lock not included)

1/2" x 1/2" Shoulder for door to fit in

BOTTOM VIEW



WEIGHT: 1650 LBS
TEXTURE:
COLOR:
SEALER:

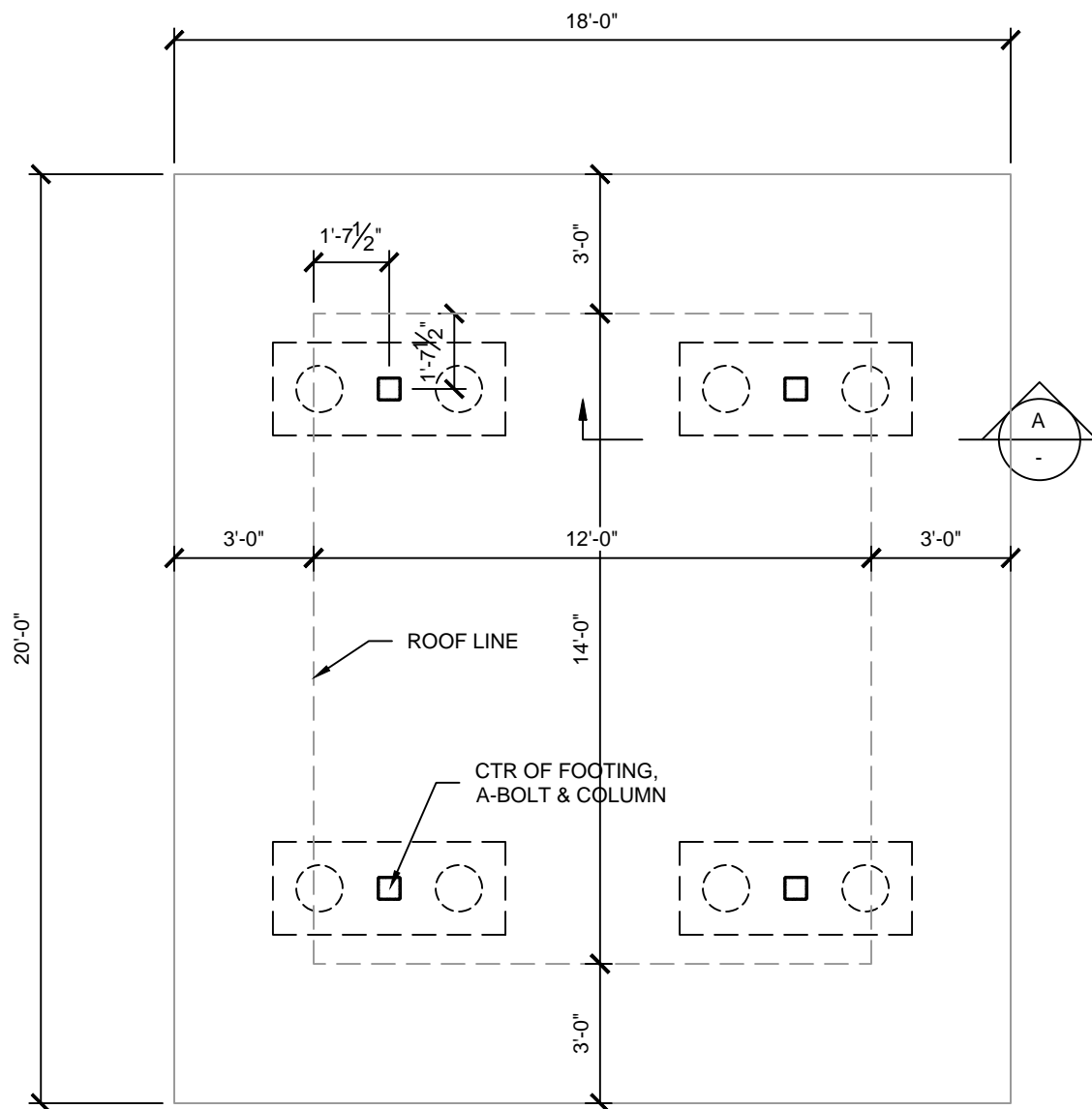
OUTDOOR CREATIONS INC.
2270 Barney Street
Anderson, CA 96007
(530) 365-6106
FAX (530) 365-5129

NOTES:

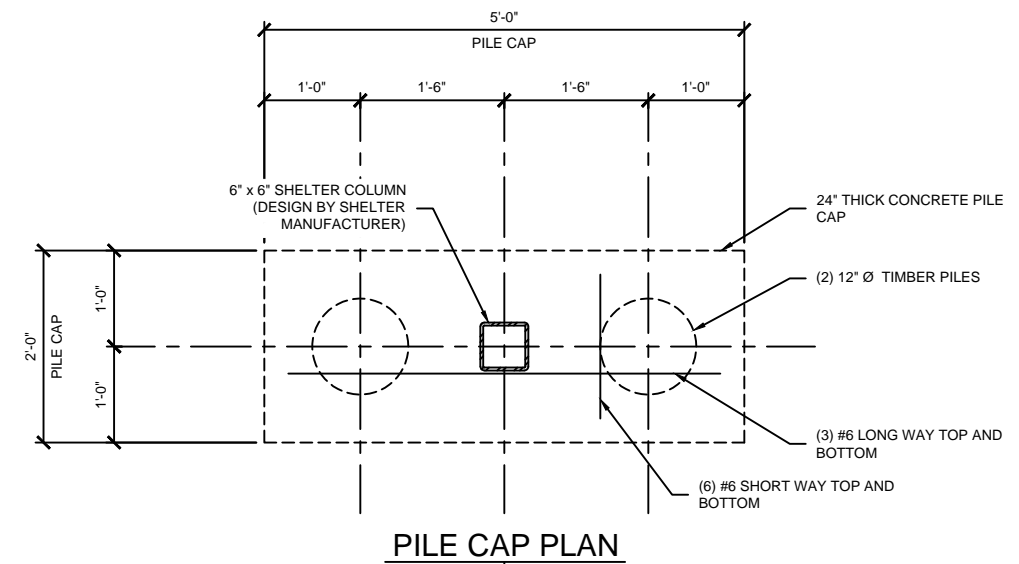
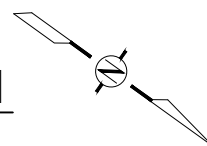
1. Concrete mix design to include a mixture of Portland Cement, water, coarse and fine aggregates, pure mineral oxide coloring agents (when applicable) to yield a minimum compressive strength of 5000 psi.
2. Final product shall be reinforced with #4 and #5 rebar grid.
3. Product is cast in 1-piece with no assembly required.
4. Hairline cracks may develop over time. These are not structural failures, but inherent characteristics of the material itself.
5. Air pockets are a common occurrence in precast products. The frequency and size of air pockets are variable and to be expected, especially on vertical surfaces.
6. Concrete corners and edges will chip if not handled according to guidelines. Patch kits are available but may or may not blend and can be variable.
7. There is a level of care and maintenance associated with your product and is the responsibility of the end user. Choosing the right sealer can help minimize those costs.

REV.	DATE	DESCRIPTION	BY
0	20-JAN-20XX		

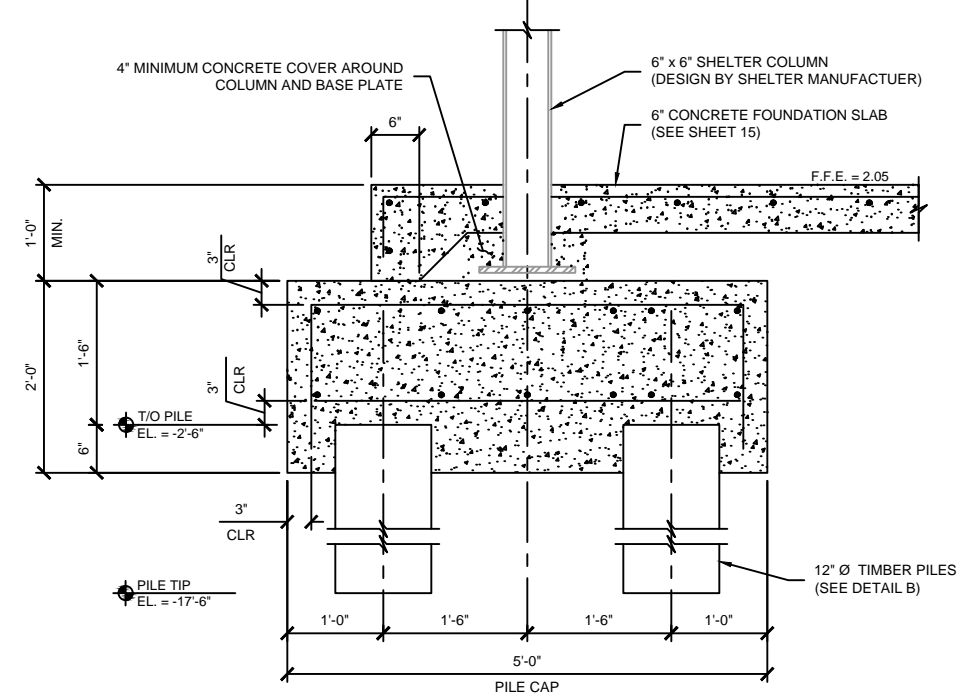
<p>MSMM ENGINEERING, LLC 4508 CLEARVIEW PKWY. METAIRIE, LA 70006 www.msmmengineering.com</p>	<p>COASTAL PROTECTION AND RESTORATION AUTHORITY 150 TERRACE AVENUE BATON ROUGE, LOUISIANA 70802</p>	
	<p>CONCRETE WASTE RECEPTACLE</p>	<p>DESIGNED BY: J.A.W. APPROVED BY: M.M.</p>
<p>BAYOU SEGNETTE STATE PARK IMPROVEMENTS BOAT LAUNCH ENHANCEMENTS</p>	<p>STATE PROJECT NUMBER: BA-0213 DRAWN BY: E.M.C.</p>	<p>DATE: MARCH, 2021</p>
<p>SHEET 17 OF 26</p>		



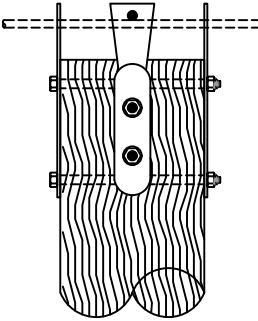
12' x 14' SHELTER PILE FOUNDATION PLAN
 SCALE: 1/4" = 1'-0"



PILE CAP PLAN



SECTION
 SCALE: 3/4" = 1'-0"



TIMBER PILE MANUFACTURER TO DESIGN ANCHOR AND PILE WITH AN ALLOWABLE COMPRESSION CAPACITY OF 6 KIPS.

DETAIL
 SCALE: NONE



MSMM ENGINEERING, LLC
 4508 CLEARVIEW PKWY.
 METAIRIE, LA 70006
 www.msmmengineering.com

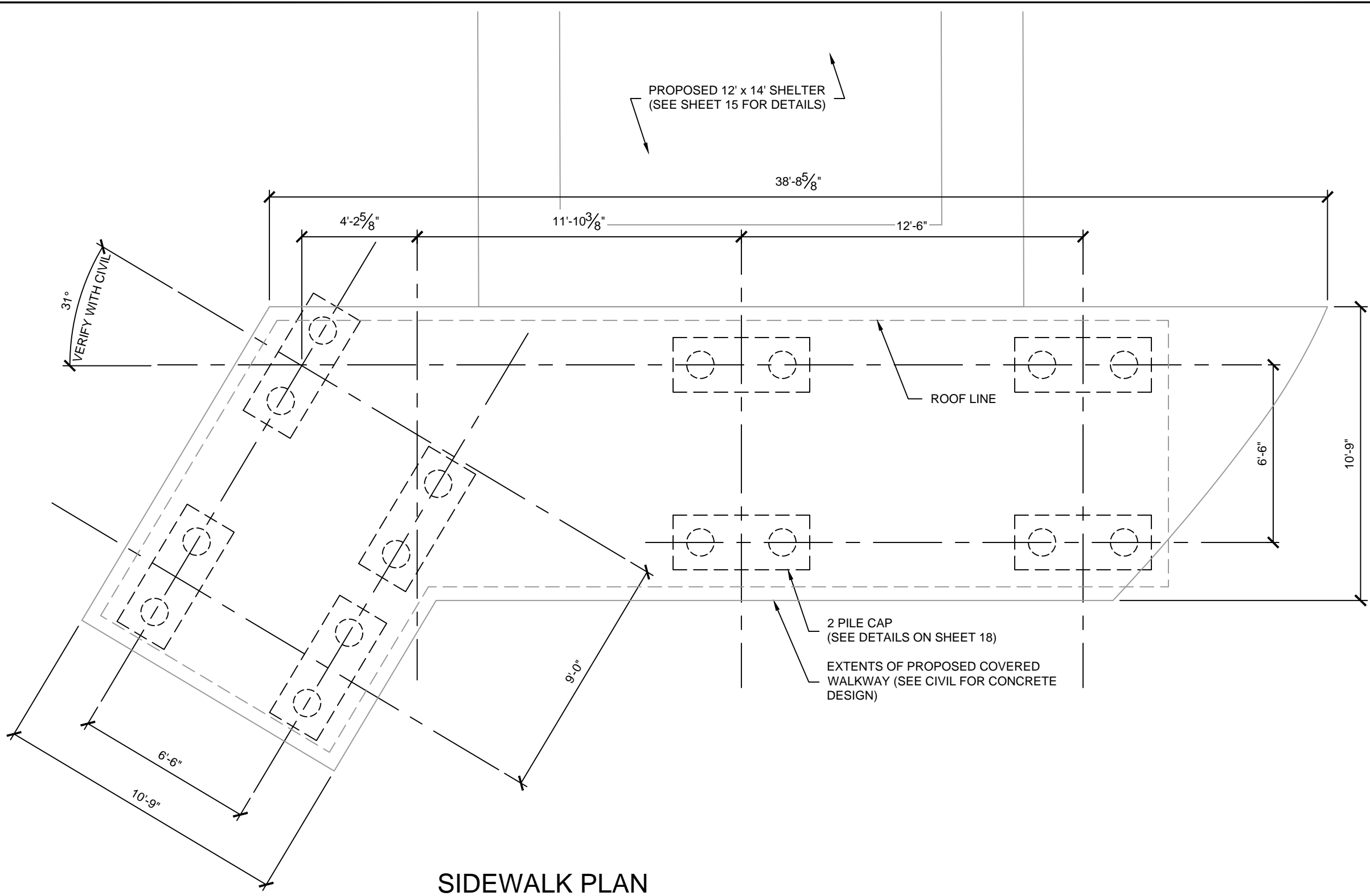
COASTAL PROTECTION AND RESTORATION AUTHORITY
 150 TERRACE AVENUE
 BATON ROUGE, LOUISIANA 70802

SHELTER PILE FOUNDATION PLAN AND DETAILS

BAYOU SEGNETTE STATE PARK IMPROVEMENTS BOAT LAUNCH ENHANCEMENTS
 STATE PROJECT NUMBER: BA-0213
 DESIGNED BY: PN
 DRAWN BY: JC

DATE: MARCH, 2021
 SHEET 18 OF 26

REV.	DATE	DESCRIPTION	BY



PROPOSED 12' x 14' SHELTER
(SEE SHEET 15 FOR DETAILS)

38'-8⁵/₈"

4'-2⁵/₈"

11'-10³/₈"

12'-6"

31°
VERIFY WITH CIVIL

ROOF LINE

6'-6"

10'-9"

2 PILE CAP
(SEE DETAILS ON SHEET 18)

EXTENTS OF PROPOSED COVERED
WALKWAY (SEE CIVIL FOR CONCRETE
DESIGN)

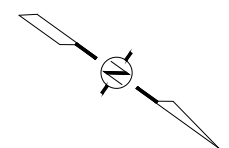
9'-0"

6'-6"

10'-9"

SIDEWALK PLAN

SCALE: 1/4" = 1'-0"



REV.	DATE	DESCRIPTION	BY

MSMM
ENGINEERING, LLC
4508 CLEARVIEW PKWY.
METAIRIE, LA 70006
www.msmmengineering.com

**COASTAL PROTECTION
AND RESTORATION
AUTHORITY**
150 TERRACE AVENUE
BATON ROUGE, LOUISIANA 70802

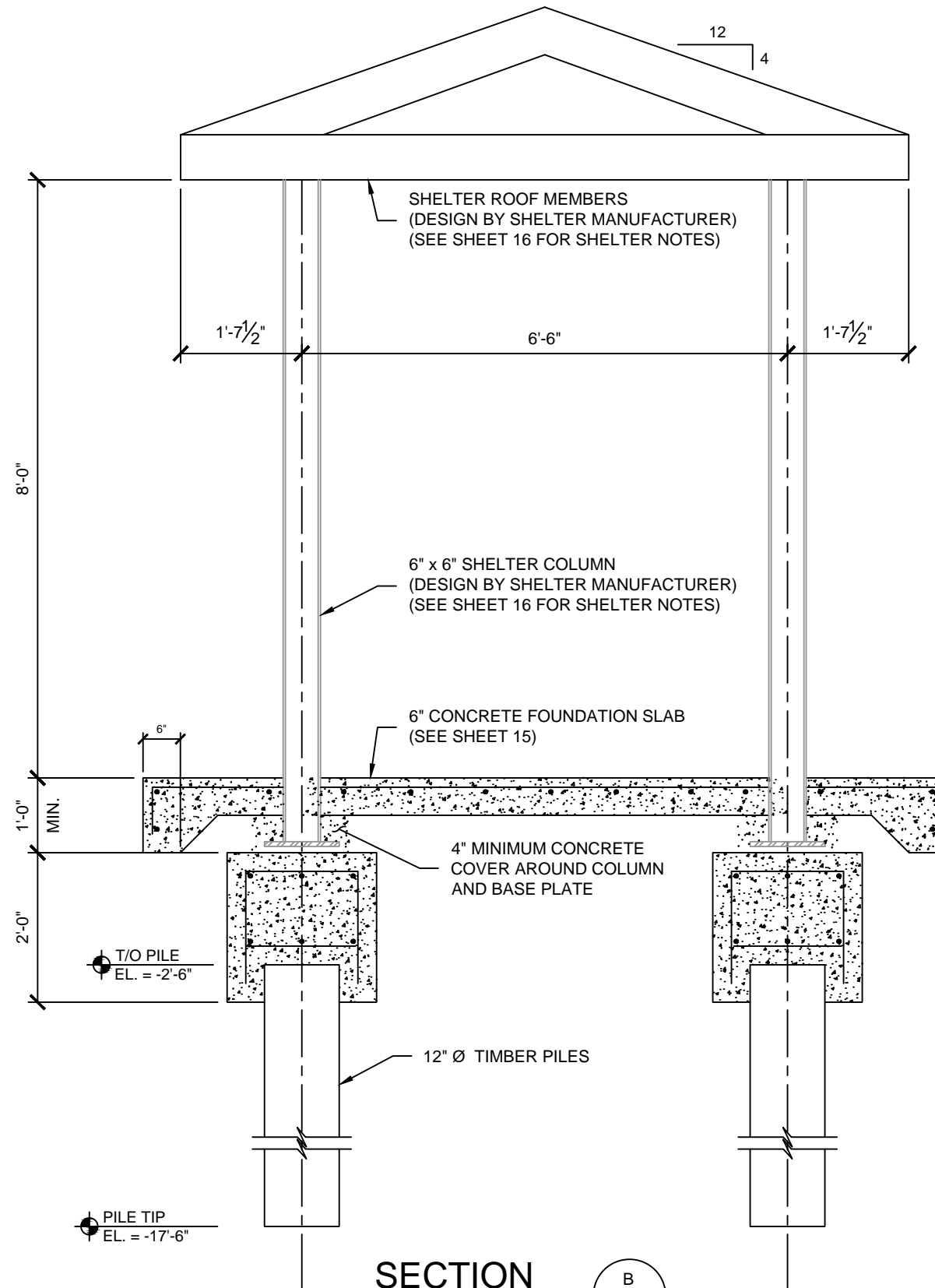
COVERED WALKWAY
FOUNDATION
PLAN AND DETAILS
DESIGNED BY: PN
APPROVED BY: RK

BAYOU SEGNETTE
STATE PARK IMPROVEMENTS
BOAT LAUNCH ENHANCEMENTS
STATE PROJECT NUMBER: BA-0213
DRAWN BY: JC



3-9-2021

DATE: MARCH, 2021



SECTION
SCALE: 1/2" = 1'-0"
B



MSMM
ENGINEERING, LLC
4508 CLEARVIEW PKWY.
METAIRIE, LA 70006
www.msmmengineering.com

**COASTAL PROTECTION
AND RESTORATION
AUTHORITY**
150 TERRACE AVENUE
BATON ROUGE, LOUISIANA 70802

WALKWAY
FOUNDATION DETAILS

BAYOU SEGNETTE
STATE PARK IMPROVEMENTS
BOAT LAUNCH ENHANCEMENTS

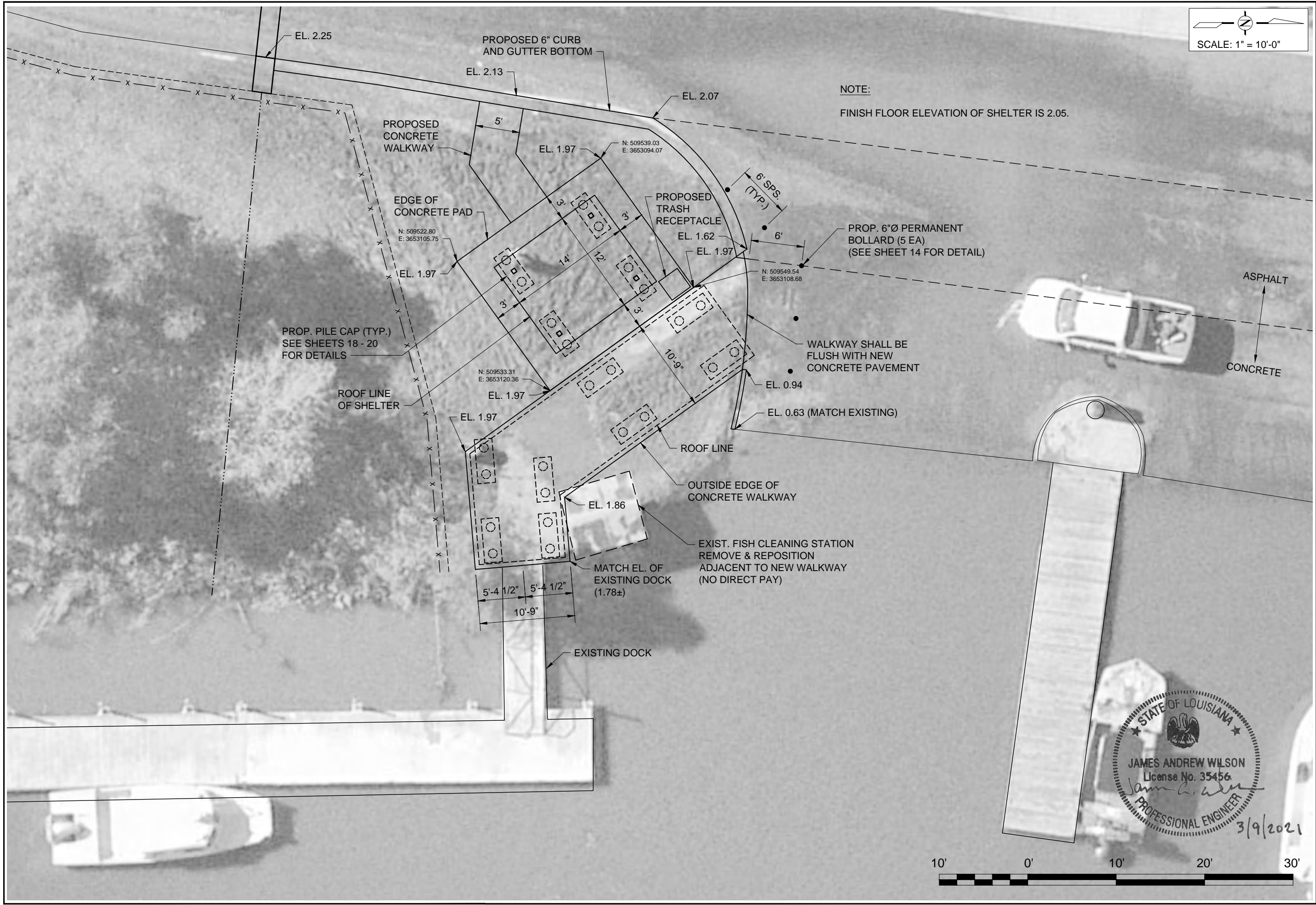
DESIGNED BY: PN
APPROVED BY: RK

STATE PROJECT NUMBER: BA-0213
DRAWN BY: JC

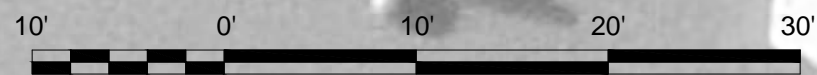
DATE: MARCH, 2021

SHEET 20 OF 26

REV.	DATE	DESCRIPTION	BY



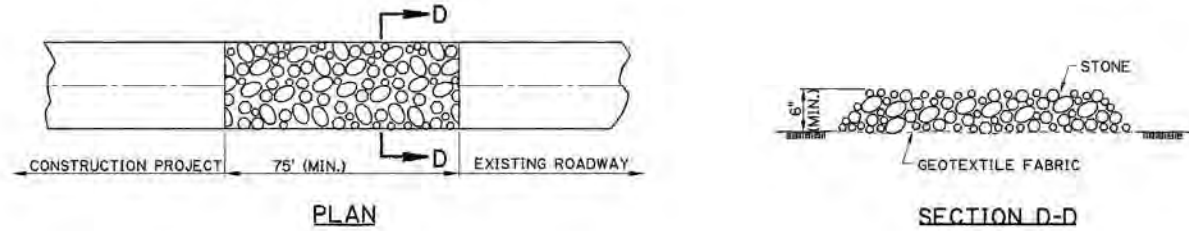
SCALE: 1" = 10'-0"



STATE OF LOUISIANA
 JAMES ANDREW WILSON
 License No. 35456
 PROFESSIONAL ENGINEER
 3/9/2021

INT	DESCRIPTION	DATE	REV.
0	20-JAN-20XX		

MSMM ENGINEERING, LLC 4508 CLEARVIEW PKWY, METAIRIE, LA 70006 www.msmmengineering.com	
COASTAL PROTECTION AND RESTORATION AUTHORITY 150 TERRACE AVENUE BATON ROUGE, LOUISIANA 70802	
PROPOSED SHELTER/WALKWAY ENLARGEMENT	DESIGNED BY: J.A.W. APPROVED BY: M.M.
BAYOU SEGNETTE STATE PARK IMPROVEMENTS BOAT LAUNCH ENHANCEMENTS	STATE PROJECT NUMBER: BA-0213 DRAWN BY: E.M.C.
DATE: MARCH, 2021	
SHEET 21 OF 26	



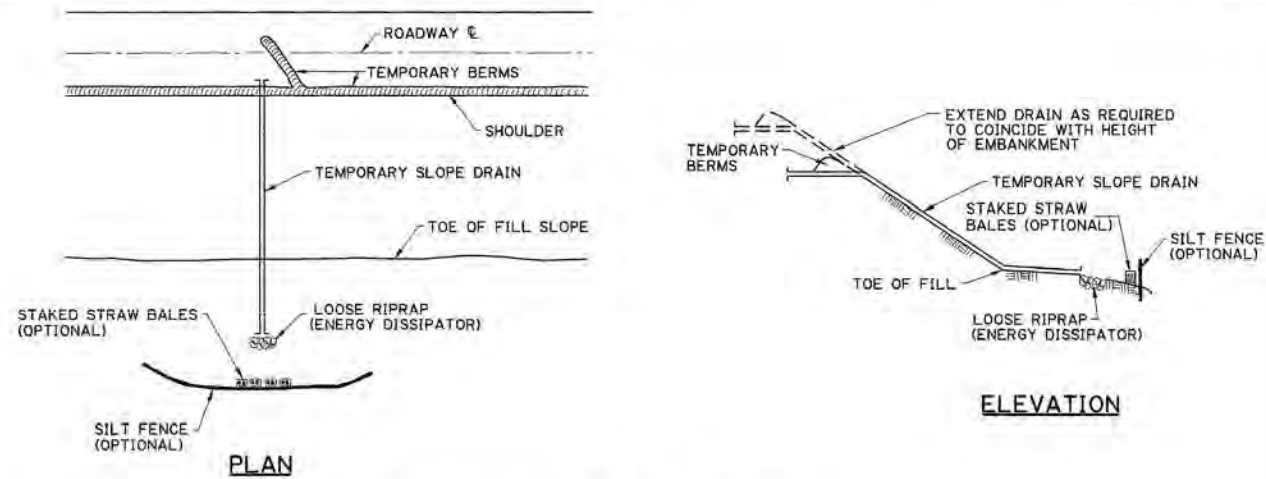
TEMPORARY STONE CONSTRUCTION ENTRANCE
PAY ITEM: TEMPORARY STONE CONSTRUCTION ENTRANCE

NOTES:

TEMPORARY STONE CONSTRUCTION ENTRANCE AND/OR WASH RACK

A STONE STABILIZED PAD LOCATED AT POINTS OF VEHICULAR INGRESS AND EGRESS ON THE CONSTRUCTION SITE TO REDUCE THE AMOUNT OF MUD TRANSPORTED ONTO PUBLIC ROADS. IF THE ACTION OF THE VEHICLE TRAVELING OVER THE GRAVEL PAD IS NOT SUFFICIENT TO REMOVE THE MAJORITY OF THE MUD, THEN THE TIRES MUST BE WASHED BEFORE THE VEHICLE ENTERS A PUBLIC ROAD. A FEW BASIC DESIGN GUIDELINES FOR THE USE OF A STONE ENTRANCE AND/OR WASH RACKS ARE:

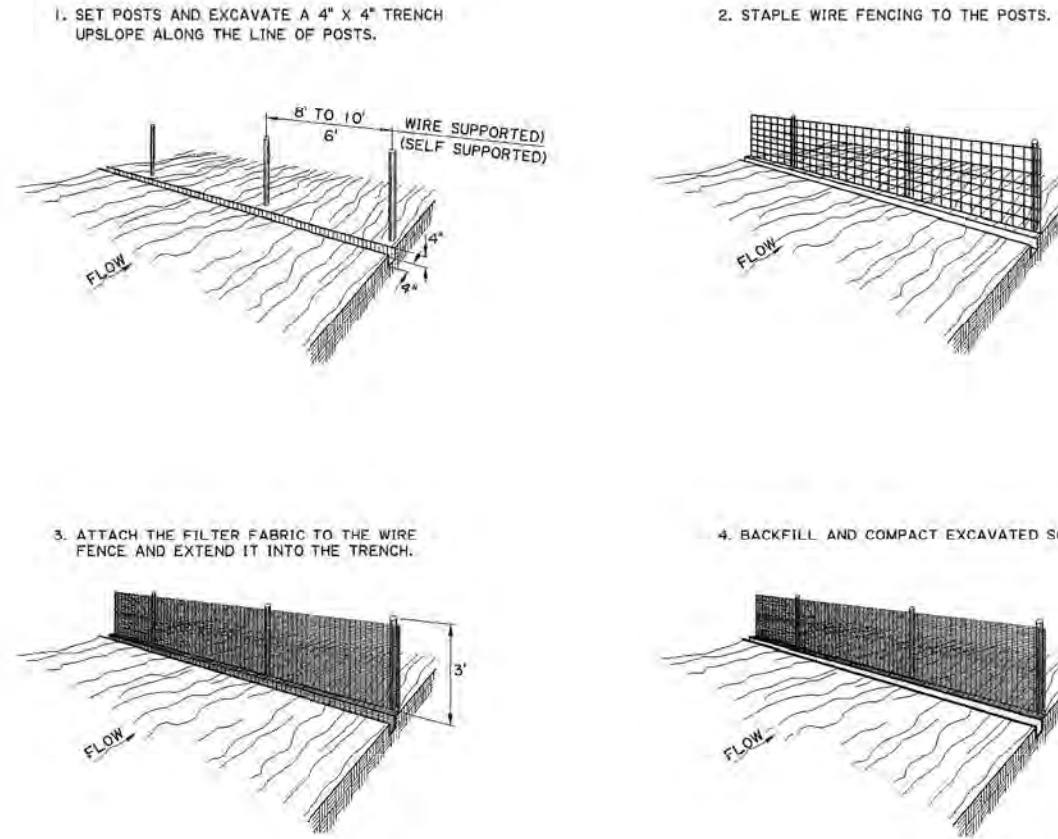
1. THE STONE LAYER MUST BE AT LEAST 6 INCHES THICK.
2. THE STONE SHALL CONFORM TO PROJECT SPECIFICATIONS FOR RIPRAP (CLASS 2 LB).
3. THE LENGTH OF THE PAD MUST BE AT LEAST 75 FEET AND IT MUST EXTEND THE FULL WIDTH OF THE VEHICULAR INGRESS AND EGRESS.
4. A GEOTEXTILE FABRIC UNDERLINER IS REQUIRED. THE GEOTEXTILE FABRIC SHALL BE IN ACCORDANCE WITH PROJECT SPECIFICATIONS FOR GEOTEXTILE FABRIC (CLASS D).
5. IF A WASH RACK IS NECESSARY, PROVISIONS MUST BE MADE TO INTERCEPT THE WASH WATER AND TRAP THE SEDIMENT BEFORE IT IS CARRIED OFF-SITE.



TEMPORARY SLOPE DRAIN

A TEMPORARY SLOPE DRAIN IS A DEVICE USED TO CARRY WATER FROM THE CONSTRUCTION WORK AREA TO A LOWER ELEVATION. SLOPE DRAINS MAY BE PLASTIC SHEET, METAL OR PLASTIC PIPE, STONE GUTTERS, FIBER MATS, OR CONCRETE OR ASPHALT DITCHES. A FEW BASIC DESIGN GUIDELINES FOR THE USE OF A TEMPORARY SLOPE DRAIN ARE:

1. THE SPACING OF THE SLOPE DRAINS VARIES WITH THE ROAD GRADE.
FOR GRADES: 0.0% - 2.0% USE 500' SPACING
2.1% - 5.0% USE 200' SPACING
GREATER THAN 5.0% USE 100' SPACING
2. SLOPE DRAIN MATERIAL: SMOOTH PIPE - 8" MINIMUM - 3 MILS THICK MIN.
CORRUGATED PIPE - 12" MINIMUM
PLASTIC SHEETING - 4' WIDE MINIMUM
PLASTIC SHEETING - 3 MILS THICK MIN.
3. PLASTIC SHEETING CAN BE STAKED DOWN OR WEIGHTED WITH ROCKS OR LOGS. THE AREA UNDER THE SHEETING SHOULD BE SHAPED TO PROVIDE AN ADEQUATE CHANNEL.
4. THE OUTLET END SHOULD BE PROTECTED OR HAVE SOME MEANS OF DISSIPATING ENERGY. THE FLOW SHOULD BE DIRECTED THROUGH A SEDIMENT TRAP SUCH AS A SILT FENCE, HAY BALES, OR OTHER APPROVED SEDIMENT CONTROL DEVICES.
5. TO INSURE PROPER OPERATION, TEMPORARY SLOPE DRAINS SHOULD BE INSPECTED REGULARLY AND AFTER EACH STORM, FOR CLOGGING OR DISPLACEMENT. EROSION AT THE OUTLET SHOULD BE CHECKED AND THE SILT TRAPS CLEANED IF NECESSARY.



CONSTRUCTION OF TEMPORARY SILT FENCING

(WIRE SUPPORTED SILT FENCE IS SHOWN. SELF SUPPORTED SILT FENCE WILL BE CONSTRUCTED ACCORDING TO MANUFACTURERS SPECIFICATIONS.)

NOTES:

SILT FENCING IS A TEMPORARY SEDIMENT BARRIER CONSISTING OF A FILTER FABRIC SUPPORTED BY POSTS AND STRETCHED ACROSS AN AREA TO INTERCEPT AND DETAIN SMALL AMOUNTS OF SEDIMENT. THE SILT FENCING SHALL BE IN ACCORDANCE WITH PROJECT SPECIFICATIONS FOR TEMPORARY EROSION CONTROL. A FEW BASIC GUIDELINES FOR THE USE OF SILT FENCING ARE:

1. USE WHERE EROSION WOULD OCCUR IN THE FORM OF SHEET AND RILL EROSION
2. USE WHERE THE MAXIMUM DRAINAGE AREA BEHIND THE SILT FENCE IS 1/4 ACRE PER 100 FEET OF SILT FENCE LENGTH
3. USE WHERE THE MAXIMUM SLOPE LENGTH BEHIND THE BARRIER IS 100 FEET
4. USE THERE THE MAXIMUM GRADIENT BEHIND THE BARRIER IS 2:1
5. DO NOT USE SILT FENCES IN LIVE STREAMS OR IN DITCHES OR SWALES WHERE FLOWS EXCEED ONE CUBIC FOOT PER SECOND

REVISION NUMBER	DATE	BY	DESCRIPTION
0	20-JAN-20XX		
1	1-14-94		
2	2 OF 2		

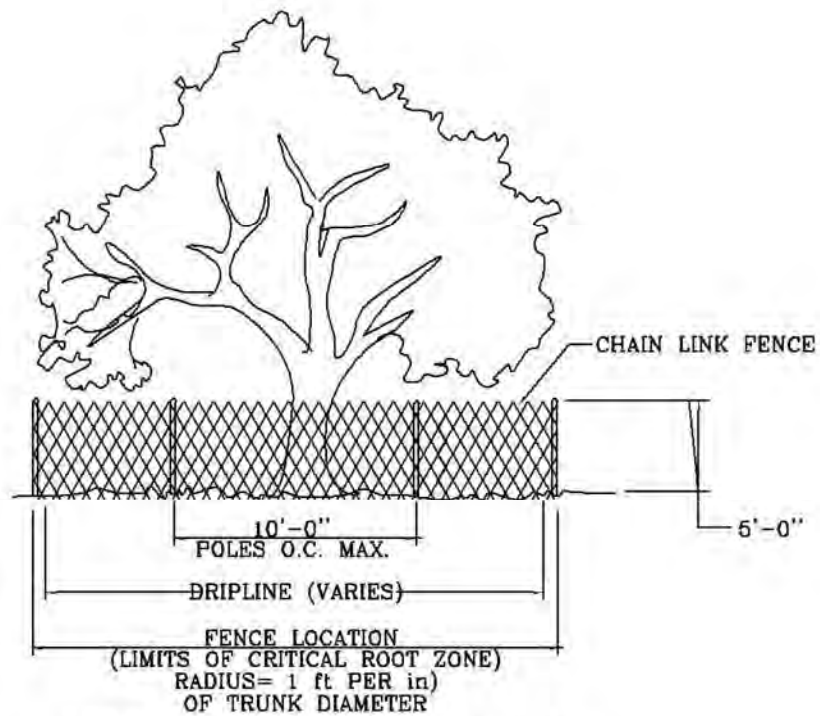
MSMM ENGINEERING, LLC
4508 CLEARVIEW PKWY.
METAIRIE, LA 70006
www.msmmengineering.com

COASTAL PROTECTION AND RESTORATION AUTHORITY
150 TERRACE AVENUE
BATON ROUGE, LOUISIANA 70802

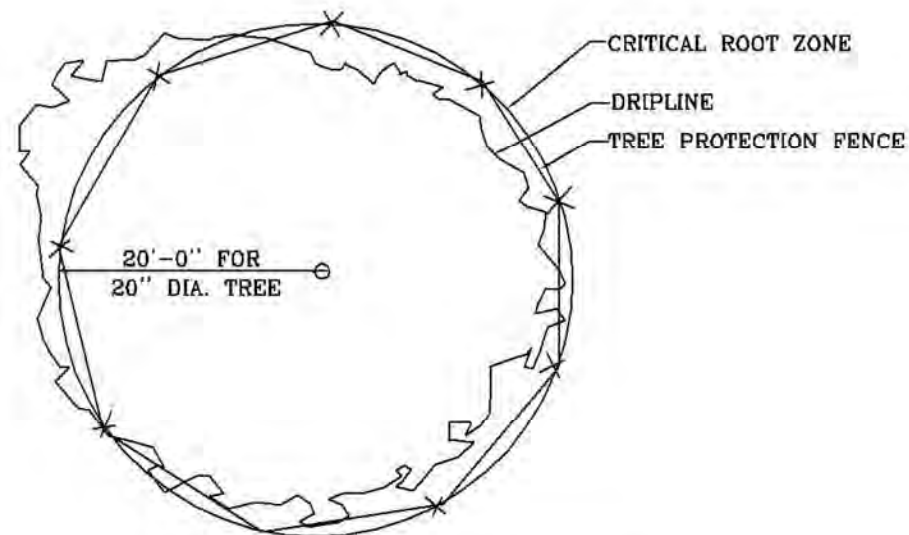
TEMPORARY EROSION CONTROL DETAILS (EC-01)

BAYOU SEGNETTE STATE PARK IMPROVEMENTS BOAT LAUNCH ENHANCEMENTS

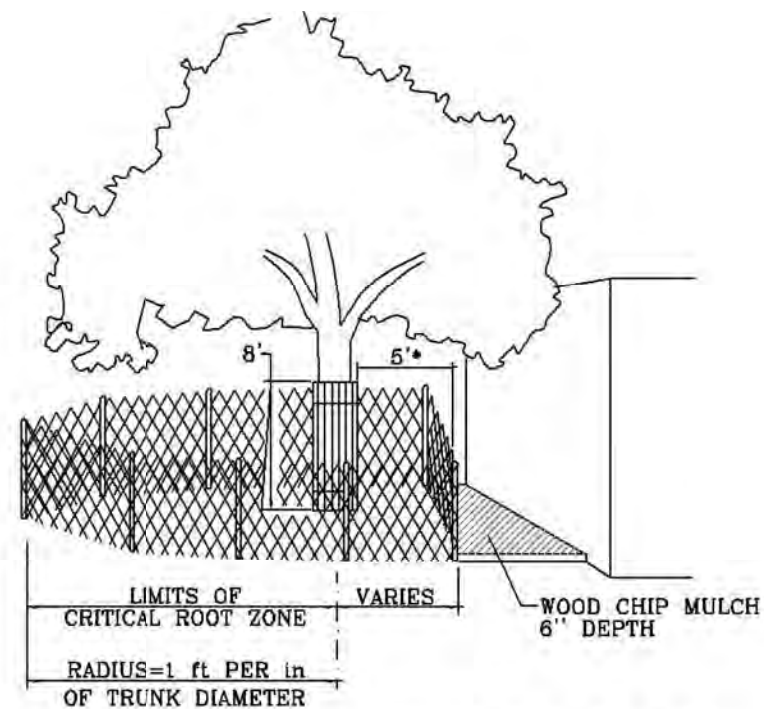
DESIGNED BY: J.A.W.
APPROVED BY: M.M.
STATE PROJECT NUMBER: BA-0213
DRAWN BY: E.M.C.



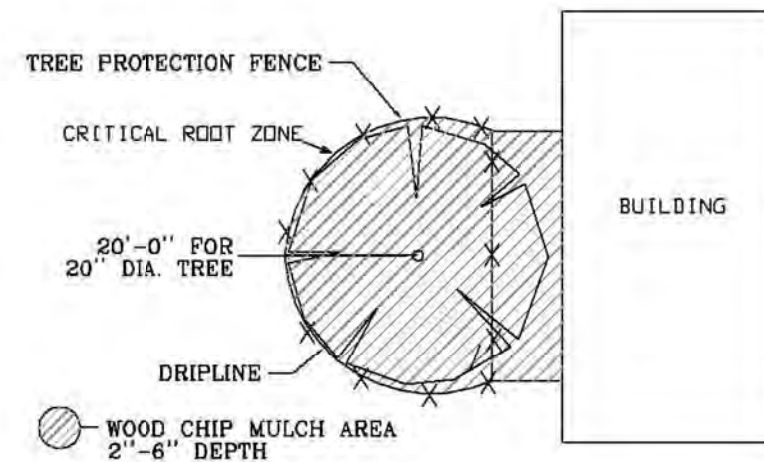
TREE PROTECTION FENCING
CHAIN LINK FENCE
N. T. S.



TREE PROTECTION FENCING
CHAIN LINK FENCE
N. T. S.



MODIFIED TREE PROTECTION FENCING
CHAIN LINK FENCE
N. T. S.



MODIFIED TREE PROTECTION FENCING
CHAIN LINK FENCE
N. T. S.

NOTE:

INSTALL TREE PROTECTION FENCING AROUND GROUPINGS OF TREES AS SHOWN ON SHEET 4



MSMM
ENGINEERING, LLC
4508 CLEARVIEW PKWY.
METAIRIE, LA 70006
www.msmmengineering.com

COASTAL PROTECTION AND RESTORATION AUTHORITY
150 TERRACE AVENUE
BATON ROUGE, LOUISIANA 70802

TREE PROTECTION DETAILS
DESIGNED BY: J.A.W.
APPROVED BY: M.M.

BAYOU SEGNETTE
STATE PARK IMPROVEMENTS
BOAT LAUNCH ENHANCEMENTS
STATE PROJECT NUMBER: BA-0213
DRAWN BY: E.M.C.

DATE: MARCH, 2021

SHEET 26 OF 26

REV.	DATE	DESCRIPTION

1. Activities authorized under this general permit shall not be used for piecemeal work and shall be applied to single and complete projects. All components of a single and complete project shall be treated together as constituting one single and complete project. All planned phases of multi-phased projects shall be treated together as constituting one single and complete project. This general permit shall not be used for any activity that is part of an overall project for which an individual permit is required.
2. No activity is authorized under this general permit which may adversely affect significant cultural resources listed or eligible for listing in the National Register of Historic Places until the requirements for Section 106 of the National Historic Preservation Act are met. Upon discovery of the presence of previously unknown historic and/or prehistoric cultural resources, all work must cease and the permittee must notify the State Historic Preservation Office and the Corps of Engineers. The authorization is suspended until it is determined whether or not the activity will have an adverse effect on cultural resources. The authorization may be reactivated or modified through specific conditions if necessary, if it is determined that the activity will have no adverse effect on cultural resources. The PGP authorization will be revoked if it is determined that cultural resources would be adversely affected, and an individual permit may be necessary.
3. There shall be no unreasonable interference with navigation by the existence or use of the activity authorized herein. The permittee will, at his or her expense, install and maintain any safety lights, signals, and signs prescribed by the United States Coast Guard, through regulations or otherwise, on authorized facilities or on equipment used in performing work under the authorization.
4. No activity may substantially disrupt the movement of those species of aquatic life indigenous to the water body, including those species which normally migrate through the area, unless the activity's primary purpose is to block or impound water.
5. If the **authorized** activity involves the installation of aerial transmission lines, submerged cable, or submerged pipelines across navigable waters of the United States the following is applicable:

The National Ocean Service (NOS) has been notified of this authorization. You must notify NOS and this office in writing, at least two weeks before you begin work and upon completion of the activity authorized by this permit. Your notification of completion must include a drawing which certifies the location and configuration of the completed activity (a certified permit drawing may be used). Notification to NOS will be sent to the following address: National Ocean Service, Office of Coast Survey, N/CS261, 1315 East West Highway, Silver Spring, Maryland 20910-3282.

6. For pipelines under an anchorage or a designated fairway in the Gulf of Mexico the following is applicable: The NOS has been notified of this authorization. You must notify NOS and this office in writing, at least two weeks before you begin work and upon completion of the activity authorized by this permit. Within 30 days of completion of the pipeline, 'as built' drawings certified by a professional engineer registered in Louisiana or by a registered surveyor shall be furnished to this office, the Commander (dpw), Eighth Coast Guard District, Hale Boggs Federal Building, 500 Poydras Street, Room 1230, New Orleans, Louisiana 70130, and to the Director, National Ocean Service, Office of Coast Survey, N/CS261, 1315 East West Highway, Silver Spring, Maryland 20910-3282. The plans must include the location, configuration and actual burial depth of the completed pipeline project.

7. If the **authorized** project, or future maintenance work, involves the use of floating construction equipment (barge mounted cranes, barge mounted pile driving equipment, floating dredge equipment, dredge discharge pipelines, etc.) in the waterway, you are advised to notify the Eighth Coast Guard District so that a Notice to Mariners, if required, may be prepared. Notification with a copy of your permit approval and drawings should be mailed to the Commander (dpw), Eighth Coast Guard District, Hale Boggs Federal Building, 500 Poydras Street, Room 1230, New Orleans, Louisiana 70130, about 1 month before you plan to start work. Telephone inquiries can be directed to the Eighth Coast Guard District, Waterways Management at (504) 671-2107.

8. All activities authorized herein shall, if they involve, during their construction or operation, any discharge of pollutants into waters of the United States, be at all times consistent with applicable water quality standards, effluent limitations and standards of performance, prohibitions, pretreatment standards and management practices established pursuant to the Clean Water Act (PL 92-500:86 Stat 816), or pursuant to applicable state and local laws.

9. Substantive changes to the Louisiana Coastal Resources Program may require immediate suspension and revocation of this permit in accordance with 33 CFR 325.7.

10. Irrespective of whether a project meets the other conditions of this permit, the Corps of Engineers retains discretionary authority to require an individual Department of the Army permit when circumstances of the proposal warrant this requirement.

11. Any individual authorization granted under this permit may be modified, suspended, or revoked in whole or in part if the Secretary of the Army or his authorized representative determines that there has been a violation of any of the terms or conditions of this permit or that such action would otherwise be in the public interest.

12. The Corps of Engineers may suspend, modify, or revoke this general permit if it is found in the public interest to do so.

13. Activities proposed for authorization under the PGP must comply with all other necessary federal, state, and/or local permits, licenses, or approvals. Failure to do so would result in a violation of the terms and conditions of PGP.

14. The permittee shall permit the District Commander or his authorized representative(s) or designee(s) to make periodic inspections of the project site(s) and disposal site(s) if different from the project site(s) at any time deemed necessary in order to assure that the activity being performed under authority of this permit is in accordance with the terms and conditions prescribed herein.

15. This general permit does not convey any property rights, either in real estate or material, or any exclusive privileges; and it does not authorize any injury to property or invasion of rights or any infringement of federal, state, or local laws or regulations nor does it obviate the requirements to obtain state or local assent required by law for the activity authorized herein.

16. In issuing authorizations under this permit, the federal government will rely upon information and data supplied by the applicant. If, subsequent to the issuance of an authorization, such information and data prove to be false, incomplete, or inaccurate, the authorization may be modified, suspended, or revoked, in whole or in part.

17. For activities resulting in sewage generation at the project site, such sewage shall be processed through a municipal sewage treatment system or, in areas where tie-in to a municipal system is not practical, the on-site sewerage system must be approved by the local parish sanitarian before construction.

18. Any modification, suspension, or revocation of the PGP, or any individual authorization granted under this permit, will not be the basis for any claim for damages against the United States.

19. Additional conditions deemed necessary to protect the public interest may be added to the general permit by the District Commander at any time. If additional conditions are added, the public will be advised by public notice. Individual authorizations under the PGP may include special conditions deemed necessary to ensure minimal impact and compliance with the PGP.

20. The PGP is subject to periodic formal review by MVN and OCM in coordination with the Environmental Protection Agency, US Fish and Wildlife Service, the National Marine Fisheries Service, and the Louisiana Department of Wildlife and Fisheries. Comments from reviewing agencies will be considered in determination as to whether modifications to the general permit are needed. Should the District Commander make a determination not to incorporate a change proposed by a reviewing agency, after normal negotiations between the respective agencies, the District Commander will explain in writing to the reviewing agency the basis and rationale for his decision.

21. CEMVN retains discretion to review the PGP, its terms, conditions, and processing procedures, and decide whether to modify, reissue, or revoke the permit. If the PGP is not modified or reissued within 5 years of its effective date, it automatically expires and becomes null and void.

22. The permittee understands and agrees that, if future operations by the United States require the removal, relocation, or other alteration, of the structure or work herein authorized, or if, in the opinion of the Secretary of the Army or his authorized representative, said structure or work shall cause unreasonable obstruction to the free navigation of the navigable waters, the permittee will be required, upon due notice from the Corps of Engineers, to remove, relocate, or alter the structural work or obstructions caused thereby, without expense to the United States. No claim shall be made against the United States on account of any such removal or alteration.

23. You must maintain the activity authorized by this permit in good condition and in conformance with the terms and conditions of this permit. You are not relieved of this requirement if you abandon the permitted activity, although you may make a good faith transfer to a third party as described in Special Condition 25 below. Should you wish to cease to maintain the authorized activity or should you desire to abandon it without a good faith transfer, you must obtain a modification of this permit from this office, which may require restoration of the area.

24. If you discover any previously unknown historic or archeological remains while accomplishing the activity authorized by this permit, you must immediately notify this office of what you have found. We will initiate the Federal and State coordination required to determine if the remains warrant a recovery effort or if the site is eligible for listing in the National Register of Historic Places.

25. If you sell the property associated with this permit, you must provide this office with a copy of the permit and a letter noting your agreement to transfer the permit to the new owner and the new owner's agreement to accept the permit and abide by all conditions of the permit. This letter must be signed by both parties.

26. Many local governing bodies have instituted laws and/or ordinances in order to regulate dredge and/or fill activities in floodplains to assure maintenance of floodwater storage capacity and avoid disruption of drainage patterns that may affect surrounding properties. Your project involves dredging and/or placement of fill; therefore, you must contact the local municipal and/or parish governing body regarding potential impacts to floodplains and compliance of your proposed activities with local floodplain ordinances, regulations or permits.

27. In issuing authorizations under this permit, the federal government does not assume any liability for: damages to the permitted project or uses thereof as a result of other permitted or unpermitted activities or from natural causes; damages to the permitted project or uses thereof as a result of current or future activities undertaken by or on behalf of the United States in the public interest; damages to persons, property, or to other permitted or unpermitted activities or structures caused by the activity authorized by this permit, and; design or construction deficiencies associated with the permitted work.

STANDARD MANATEE CONDITIONS FOR IN-WATER ACTIVITIES

During in-water work in areas that potentially support manatees, all personnel associated with the project shall be instructed and aware of the potential presence of manatees, manatee speed zones, and the need to avoid collisions with, and injury to, manatee. All personnel shall be advised that there are civil and criminal penalties for harming, harassing, or killing manatees which are protected under the Marine Mammal Protection Act of 1972 and the Endangered Species Act of 1973. Additionally, personnel shall be instructed not to attempt to feed or otherwise interact with the animal.

All on-site personnel are responsible for observing water-related activities for the presence of manatee(s). To minimize potential impacts to manatees in areas of their potential presence, the permittee shall insure the following are adhered to:

- All work, equipment, and vessel operation shall cease if a manatee is spotted within a 50-foot radius (buffer zone) of the active work area. Once the manatee has left the buffer zone on its own accord (manatees must not be herded or harassed into leaving), or after 30 minutes have passed without additional sightings of manatee(s) in the buffer zone, in-water work can resume under careful observation for manatee(s).
- If a manatee(s) is sighted in or near the project area, all vessels associated with the project shall operate at “no wake/idle” speeds within the construction area and at all times while in waters where the draft of the vessel provides less than a four-foot clearance from the bottom. Vessels shall follow routes of deep water whenever possible.
- If used, siltation or turbidity barriers shall be properly secured, made of material in which manatees cannot become entangled, and be monitored to avoid manatee entrapment or impeding their movement.
- Temporary signs concerning manatees shall be posted prior to and during all in-water project activities and removed upon completion. Each vessel involved in construction activities shall display at the vessel control station or in a prominent location, visible to all employees operating the vessel, a temporary sign at least 8½ " X 11" reading language similar to the following: “CAUTION BOATERS: MANATEE AREA/ IDLE SPEED IS REQUIRED IN CONSTRUCTION AREA AND WHERE THERE IS LESS THAN FOUR FOOT BOTTOM CLEARANCE WHEN MANATEE IS PRESENT”. A second temporary sign measuring 8½ " X 11" shall be posted at a location prominently visible to all personnel engaged in water-related activities and shall read language similar to the following: “CAUTION: MANATEE AREA/ EQUIPMENT MUST BE SHUTDOWN IMMEDIATELY IF A MANATEE COMES WITHIN 50 FEET OF OPERATION”.
- Collisions with, injury to, or sightings of manatees shall be immediately reported to the U.S. Fish and Wildlife Service’s, Louisiana Ecological Services Office (337/291-3100) and the Louisiana Department of Wildlife and Fisheries, Natural Heritage Program (225/765-2821). Please provide the nature of the call (i.e., report of an incident, manatee sighting, etc.); time of incident/sighting; and the approximate location, including the latitude and longitude coordinates, if possible.