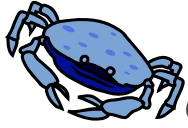




# Earthcashing at the Refuge



Using technology to discover nature!



## Crabalicious

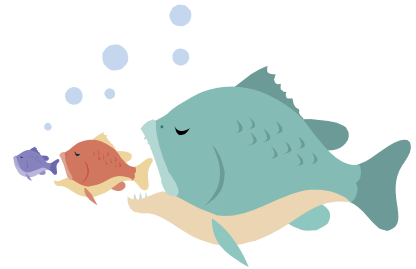
N 26° 27.090 W 082° 06.783

- 1.) How do you determine if a Blue Crab is male or female?
- 2.) What is the Refuge limit for catching blue crabs per person, per day?
- 3.) How many of the crabs that you catch can be female?

## Fishin' Mission

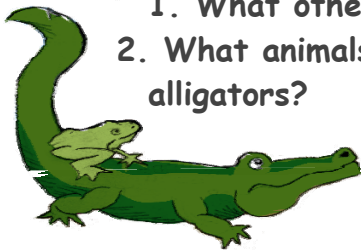
N 26° 27.930 W 082° 08.035

1. How much fishing line should you leave in a hooked bird?
2. Why should you cover a hooked bird with a towel?
3. Where will the refuge transport an injured bird?

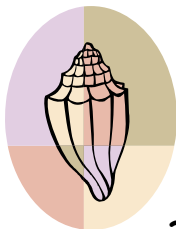


## Alligator Alert!!

N 26° 28.242 W 082° 09.077



1. What other names are there for male and female alligators?
2. What animals are listed on the sign that are predators of young alligators?
3. Approximately how many eggs does a YOUNG alligator lay in her first clutch?



## Shell Mound

N 26 28.406' W 082 09.149'

1. Who were the Native Americans that lived here in Sanibel?
2. How many mounds are located at this site?
3. List one prohibited activity on the Shell Mound Trail?



## Explore More!

N 26 26.550' W 082 04.956'

1. How many species of seagrass are there in Florida?
2. Are manatees herbivores or carnivores?
3. Name one type of seagrass that is common in the refuge waters.



## Return for your PRIZE!

N 26 26.734' W 082 06.754'

Once you have successfully completed at least 4 of the 5 caches, you may return to the "Ding" Darling Education Center for your Prize. One prize per family, please!!