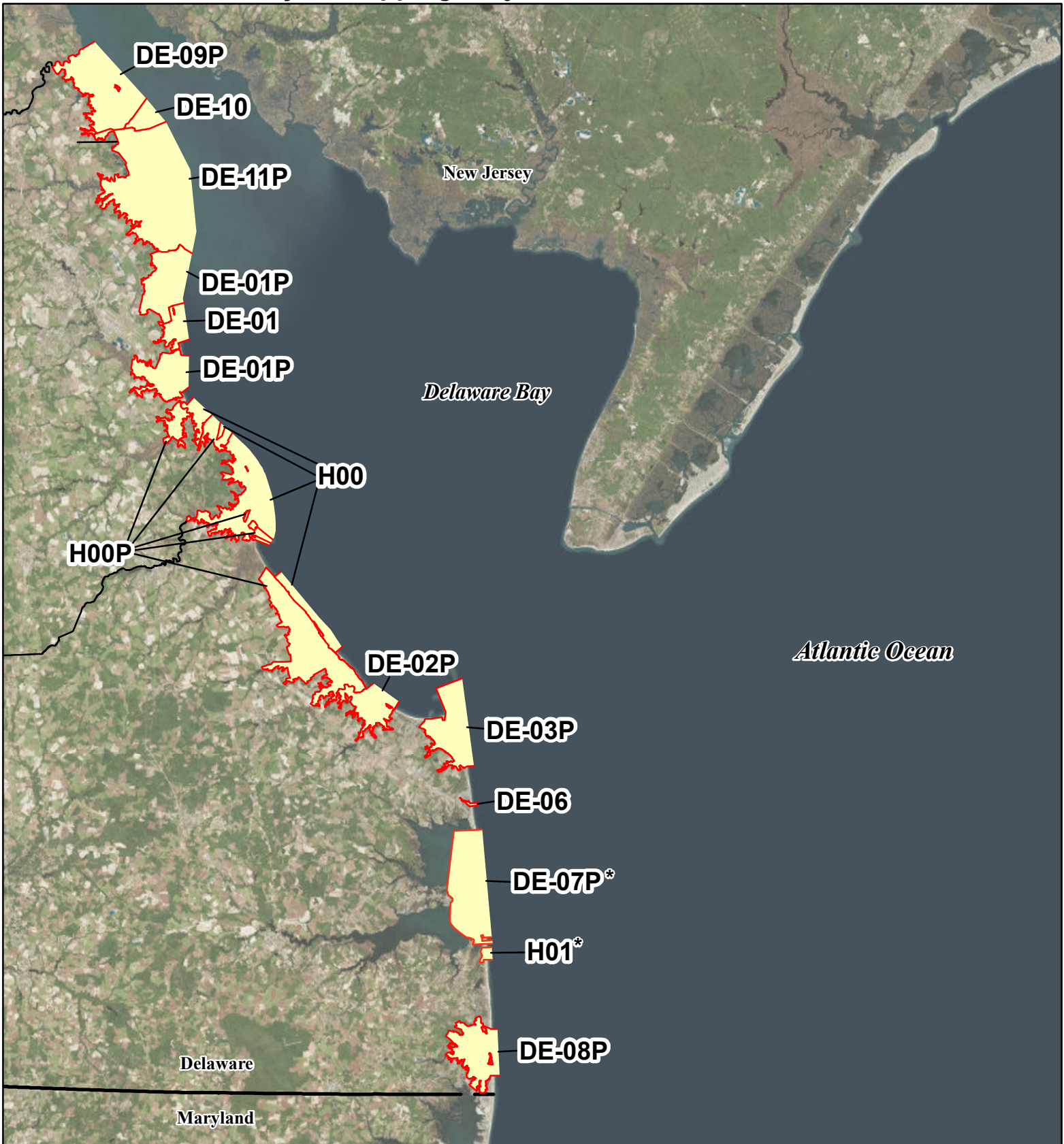




John H. Chafee Coastal Barrier Resources System Hurricane Sandy Remapping Project: Delaware



This map depicts the Coastal Barrier Resources System (CBRS) units in Delaware that are part of the Hurricane Sandy Remapping Project. To view the proposed boundaries in more detail see the CBRS Projects Mapper: <https://www.fws.gov/cbra/maps/mapper.html>.

* The boundaries of Units DE-07P and H01 are not proposed for revision under this project.



1:500,000

Coastal Barrier Resources System Hurricane Sandy Remapping Project

Summary of Proposed Changes for Delaware

Number of Units

Total Delaware Units: 11 (8 existing and 3 proposed new)

System Units: 4 (3 existing and 1 proposed new)

Otherwise Protected Areas (OPAs): 7 (5 existing and 2 proposed new)

The U.S. Fish and Wildlife Service (Service) has prepared comprehensively revised proposed boundaries for 8 of the 10 existing Coastal Barrier Resources System (CBRS) units in Delaware. A final recommended map for the remaining two existing units (Units DE-07P and H01) was submitted to Congress in 2016 as part of the Service's Digital Mapping Pilot Project. One existing unit in Delaware has no proposed changes. The Service identified three proposed new units in Delaware, which are comprised entirely of areas that are not currently contained within the CBRS. There are 11 total proposed units in Delaware. One hundred percent of the acreage in the three proposed new Delaware units is not currently within the CBRS.

Proposed Acreage and Structure Changes

	Fastland Acres ¹		Associated Aquatic Habitat Acres ²		Total Acres		Total Structures ³	
	<i>System Unit</i>	<i>OPAs</i>	<i>System Unit</i>	<i>OPAs</i>	<i>System Unit</i>	<i>OPAs</i>	<i>System Unit</i>	<i>OPAs</i>
Added to the CBRS	309	687	1,492	28,782	1,801	29,415	3	7
	Total: 996		Total: 30,220		Total: 31,216		Total: 10	
Removed from the CBRS	0	84	0	29	0	113	1	40
	Total: 84		Total: 29		Total: 113		Total: 41	
Net Reclassified ⁴	0	0	(3)	3	(3)	3		
Net Change	Total: 912		Total: 30,191		Total: 31,103		Total: (31)	

¹ Land above mean high tide.

² Associated aquatic habitat includes wetlands, marshes, estuaries, inlets, and open water landward of the coastal barrier, but does not include open water seaward of the shoreline. This information is derived from an interpretation of base map imagery in consultation with National Wetlands Inventory data and other data sources as necessary.

³ Approximate structure count derived from base map imagery. Structures without walls and a roof (e.g., picnic shelters) and structures with fewer than 200 square feet are not included in this structure count because they do not meet the definition of a "structure" in 16 U.S.C. 3503(g)(2).

⁴ Reclassified areas are areas currently within the CBRS that are recommended for reclassification from System Unit to OPA or vice versa.

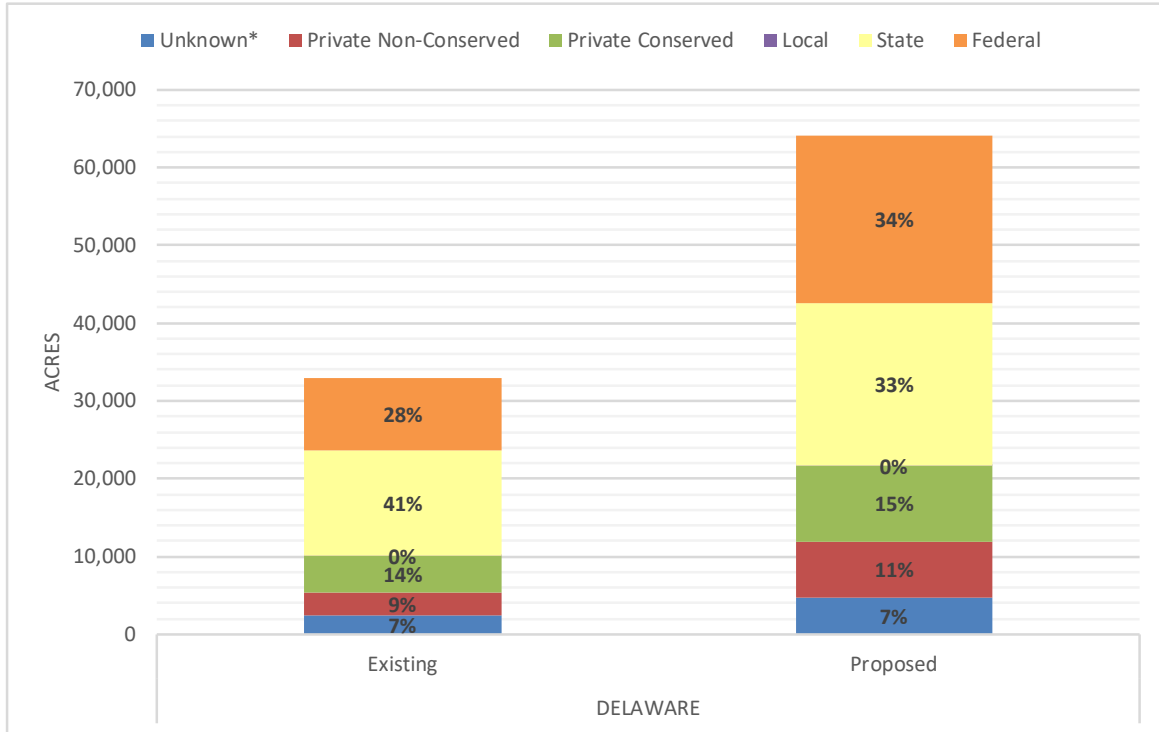
The proposed boundaries for Delaware would remove 113 acres from the CBRS (84 acres of fastland and 29 acres of associated aquatic habitat) and add approximately 31,216 acres to the CBRS (996 acres of fastland and 30,220 acres of associated aquatic habitat). The proposed boundaries for the Delaware units would remove approximately 52 acres of private fastland (i.e., private land not held for conservation/recreation) from the CBRS and add approximately 372 acres of private fastland.

The proposed boundaries for the Delaware units would remove 41 structures (mostly private residential) from the CBRS and add approximately 10 structures to the CBRS.

Information about the proposed changes for each of the individual Delaware units (including acreage and structure changes) is available at: <https://www.fws.gov/cbra/maps/Hurricane-Sandy-Project-Batch-1.html>.

Proposed Changes by Land Ownership

The ownership type of the existing and proposed CBRS units in Delaware is depicted in the graph below. In conducting this project the Service relied heavily on publicly available State and local GIS data, which did not contain ownership information for certain areas (mostly large swaths of wetlands and open water) that are within the project area; and therefore such areas are categorized as “unknown.” “Private conserved” indicates areas that are owned by private individuals or organizations (e.g., The Nature Conservancy and the Audubon Society) and held specifically for conservation and/or recreation purposes, including privately owned areas that are subject to conservation easements.



Delaware Units

County	Congressional District	Unit Number	Unit Name	Unit Status
Kent	At Large	DE-01	Little Creek	Existing Unit
Kent	At Large	DE-01P	Little Creek	Existing Unit
Sussex	At Large	DE-02P	Beach Plum Island	Existing Unit
Sussex	At Large	DE-03P	Cape Henlopen	Existing Unit
Sussex	At Large	DE-06	Silver Lake	Existing Unit
Sussex	At Large	DE-08P	Fenwick Island	Existing Unit
Kent, New Castle	At Large	DE-09P	Woodland Beach	New Unit
Kent	At Large	DE-10	Fraland Beach	New Unit
Kent	At Large	DE-11P	Bombay Hook	New Unit
Kent, Sussex	At Large	H00	Broadkill Beach	Existing Unit
Kent, Sussex	At Large	H00P	Broadkill Beach	Existing Unit

U.S. Fish & Wildlife Service
Ecological Services
5275 Leesburg Pike
Falls Church, VA 22041
703-358-2171
www.fws.gov/cbra

March 2018

