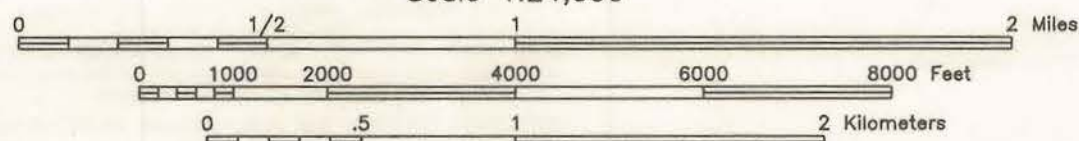




**COASTAL BARRIER RESOURCES SYSTEM**  
**BIG REED POND UNIT NY-53**  
**OYSTER POND UNIT NY-54**  
**MONTAUK POINT UNIT NY-55**

Scale 1:24,000



This map has been produced by the U.S. Fish and Wildlife Service from a set of maps adopted by Congress pursuant to the Coastal Barrier Improvement Act P.L. 101-591 and supersedes all previous maps prepared by the Service concerning undeveloped coastal barriers. The boundary delineation of this map is identical to that adopted by Congress.

The boundary delineation of this map has been amended pursuant to Section 4(e) of P.L. 101-591.

- Solid lines depict units in the CBRS.
- ..... Dotted lines depict "otherwise protected areas" not within the CBRS. These areas are shown with the Letter "P" following the unit number.

October 24, 1990  
 Revised October 15, 1992