



Accessing CBRS Maps and Digital Data

The Coastal Barrier Resources Act (CBRA) of 1982 and subsequent amendments (16 U.S.C. 3501 et seq.) established the John H. Chafee Coastal Barrier Resources System (CBRS), a defined set of geographic units along the Atlantic, Gulf of Mexico, Great Lakes, U.S. Virgin Islands, and Puerto Rico coasts. The CBRS units are depicted on a set of maps that is maintained by the U.S. Fish and Wildlife Service (Service). Most new Federal expenditures and financial assistance within the CBRS are prohibited.

Official CBRS Maps

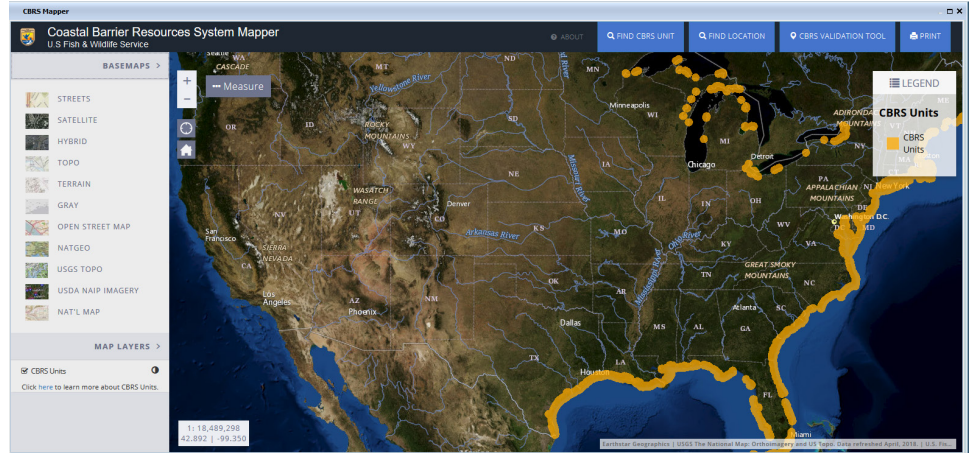
Official CBRS maps can be obtained through the Service's [CBRS Mapper](#) by following these steps:

- Zoom in or use the “Find CBRS Unit” or “Find Location” buttons to locate the area of interest in the Mapper
- Click on the location of interest. A pop-up window will open providing information for the area.
- In the pop-up window, click on the map link. A PDF of the official map will then open in a separate tab or download.

Alternatively, if the name or number of the CBRS unit is known, then the official CBRS maps can also be found in a [table](#) on the Service's CBRA website. [Locator maps](#) showing the location of the units in each state/territory are available on the Service's CBRA website.

CBRS Mapper and the CBRS Validation Tool

Geospatial CBRS boundary data is available in the [CBRS Mapper](#). The mapper contains a “[CBRS Validation Tool](#)” that allows any user to select a particular location and produce a document entitled “CBRS Mapper Documentation” which indicates whether that location is within or outside of the CBRS.



CBRS Mapper:

Digital CBRS Data

The Service has [geospatial CBRS boundary data](#) available in a variety of formats (listed below). These data are representations of the CBRS boundaries shown on the official CBRS maps. In general, these digital boundaries can be considered accurate to within approximately 20 feet of the actual CBRS boundaries as shown on the official maps. Before using the data, please read the [metadata](#) for additional information.

- **Web Map Service (WMS)**
- **ArcGIS Representational State Transfer (REST) Service**
- **Downloadable Shapefiles:**
 - **CBRS Polygons** - This data set includes polygons covering each area designated within the CBRS.
 - **CBRA Prohibitions** - This data set includes polygons covering each area designated within the CBRS. This data set also contains the dates on which prohibitions on Federal flood insurance and other Federal expenditures took effect.

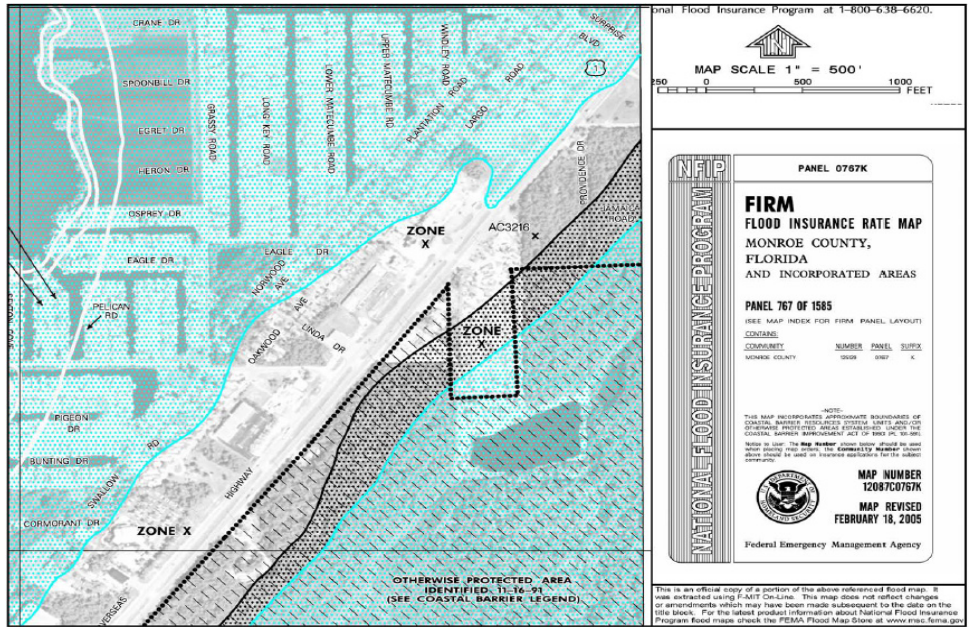
- **CBRS Buffer Zone** – This data set depicts an area covering 20 feet on either side of the CBRS boundary, and is intended to be paired with either of the above data sets to illustrate the stated horizontal accuracy of the boundaries therein. Users should pair this data with the CBRS Polygons or CBRS Prohibitions data and an orthoimage when inspecting areas that are within or in close proximity to the CBRS. Users are advised to contact the Service for an official determination as to whether a particular property or structure that falls either partially or completely within the CBRS Buffer Zone is located within CBRS.

Shapefile users are encouraged to subscribe to the CBRA Listserv (see below) to receive notifications when boundary changes are made.

Removal of CBRS Boundaries from FEMA Flood Insurance Rate Maps (FIRMs)

The official CBRS maps are maintained by the Service and are the definitive source for the location of the CBRS boundaries. However, given CBRA's

restrictions on Federal flood insurance, the Federal Emergency Management Agency (FEMA) has historically shown CBRS boundaries on coastal FIRMs as a courtesy to users. FEMA and the Service have worked collaboratively to update the delivery of CBRS data to the public. **As of February 15, 2019, CBRS boundaries and flood insurance prohibition dates are no longer depicted on static, legacy FIRMs.** Communities with effective FIRMs that show CBRS boundaries have received a Letter of Map Revision indicating that their maps have been revised to remove this information. The most up-to-date CBRS boundaries and prohibition date data can be found on the Service's CBRS Mapper and via the data sources described above. While the CBRS boundaries and prohibition dates have been removed from FEMA's FIRMs, CBRS data will continue to be delivered via WMS on a number of FEMA platforms, including the [National Flood Hazard Layer \(NFHL\) Viewer](#). Users that utilize FEMA data in other systems independent from the NFHL viewer are encouraged to incorporate either the Service's CBRS WMS or downloadable data into their systems.



Example of FEMA FIRM showing an Otherwise Protected Area.



CBRA Listserv

For CBRA news, sign up for our [listserv](#) electronic mailing list. This listserv will provide subscribers with updates when there are changes to the boundaries of the CBRS or other news items related to the CBRA.

Additional Links and Resources

- Official CBRS Maps and Statewide Locator Maps: <https://www.fws.gov/cbra/maps/index.html>
- CBRS Mapper and CBRS Validation Tool: <http://www.fws.gov/cbra/maps/mapper.html>
- CBRS Geospatial Data: <https://www.fws.gov/cbra/maps/boundaries.html>
- Metadata for Digital CBRS Data: <https://www.fws.gov/cbra/Metadata.html>
- Information about CBRS Documentation/Determinations: <https://www.fws.gov/cbra/Documentation.html>
- CBRA Listserv: <https://www.fws.gov/cbra/listserv.html>
- FEMA NFHL Viewer: <https://msc.fema.gov/nfhl>

**U.S. Fish & Wildlife Service
Ecological Services
5275 Leesburg Pike
Falls Church, VA 22041
703-358-2171
www.fws.gov/cbra**

May 2019