

# Southeast Louisiana Refuges Complex Annual User Brochure and Regulations 2023-2024

Bayou Sauvage Urban, Bayou Teche,  
Big Branch Marsh, Bogue Chitto,  
Breton, Cat Island, Delta, and  
Mandalay NWRs

**Southeast Louisiana Refuges:  
Hunting and Fishing (Bayou Sauvage Urban,  
Bayou Teche, Big Branch Marsh, Bogue Chitto,  
Breton, Cat Island, Delta, and Mandalay NWRs)**

When signed and in your possession, this serves as your approval for all refuge hunting and fishing activities and acknowledges your understanding of the regulations contained herein.

---

Signature (not transferrable)  
Expires August 31, 2024

# Southeast Louisiana Refuges Complex Regulations

## Refuge Introduction

### Southeast Louisiana National Wildlife Refuges

(NWR) Complex consists of Bayou Sauvage Urban, Bayou Teche, Big Branch Marsh, Bogue Chitto, Breton, Cat Island, Delta, and Mandalay National Wildlife Refuges (NWRs). These refuges are grouped together for administrative and management purposes. Atchafalaya NWR is part of the Complex, but public use is managed in a separate brochure. Supporting staff consisting of administrative, law enforcement, refuge management, visitor services, biological, forestry, and maintenance professionals are centrally located and support all refuges in the complex.

The Complex Headquarters is located on Big Branch Marsh NWR. Headquarters office hours are Monday-Friday 7:30 am - 4 pm, closed on Federal holidays. The Complex provides a wide variety of wildlife dependent public uses such as hunting, fishing, wildlife photography, environmental education, wildlife interpretation and observation. For more information about these or other national wildlife refuges, visit the national wildlife refuge web site at [www.fws.gov/refuges](http://www.fws.gov/refuges)

The satellite office for Mandalay and Bayou Teche NWRs is located at 1725 Willow Street, Franklin, LA 70538.

Public use regulations are designed to protect the visitor, wildlife populations, and habitats. All public use must comply with the regulations listed in this brochure.

The regulations within this brochure supplement the general regulations that govern hunting on National Wildlife Refuges as set forth in Title 50 Volume 6 Chapter 1 Parts 18-199 Code of Federal Regulations; 50 CFR Part 32, Parts 20, 27, and 26, and regulations governing hunting, fishing and camping in Louisiana and Mississippi. All hunting is in accordance with applicable state licensing and regulations, unless otherwise stated in these refuge specific regulations.

## General Refuge Regulations

At the discretion of Refuge Managers, refuges or portions of a refuge may be closed due to inclement weather, poor road conditions, safety concerns, excessive flooding, etc.

## Permit Information

All hunters and anglers age 18 and over are required to possess a valid (signed) cutout located on the cover of this

brochure. By possessing the attached signed cover page, users acknowledge their understanding of all refuge regulations. In addition to this brochure, hunting/fishing users must possess all applicable state licenses and a picture ID at all times while on refuge property.

## Refuge Uses: General Rules

We allow wildlife-dependent uses such as, but not limited to, walking nature trails, canoeing, and bicycling on areas designated by this brochure.

## Refuge Hours

Refuges are closed from legal sunset to legal sunrise, except as otherwise noted for fishing, hunting, or camping access. With the exception of legal nighttime hunting activities, refuge hunting hours are ½ hour before legal sunrise to ½ hour after legal sunset

## Access

- When parking on the refuge, you must use designated parking areas (see on maps below). In areas posted as "Area Closed" and "Do not block gate," you must abide by this signage. In areas marked as "nonmotorized boat launch," we prohibit the use of gas-powered motors on watercraft, but electric motors are allowed.
- Refuge areas closed to public hunting are marked with "No Hunting Zone" signs and/or shown on the refuge maps attached.
- For Pearl River gauge at Pearl River, Louisiana, go to: <https://water.weather.gov/ahps2/hydrograph.php?gage=perl1&wfo=lix>

## Horses/Pets/Animals

We allow dogs and other domestic pets/animals on the refuge if:

1. They do not disturb or endanger wildlife or people.
2. Pets/animals are under the control of their owners/handlers or on a leash at all times.
3. Unless they are being used for hunting purposes, dogs must be on a leash.
4. Owners/handlers of pets/animals are responsible for removal of droppings deposited in refuge public use areas such as trails, sandbars, parking areas, and boat landings.

5. During designated seasons such as hunting migratory birds, squirrels, rabbits and raccoon, we allow dogs to locate, point, and retrieve game.
  6. We encourage the use of dogs for hunting, but we prohibit field trials and commercial/professional dog training.
- All other domestic animals are prohibited unless confined in a vehicle, boat, trailer, kennel, or other carriage.
  - Horses and mules are prohibited on refuge lands.

### Camping

Camping is only allowed on Bogue Chitto National Wildlife Refuge. See refuge specific regulations.

### Vehicles

- Except on designated routes of travel, we prohibit the use of vehicles use on or across refuge lands. We prohibit parking beyond vehicle control barriers and on grass or other vegetation. We prohibit parking or operating vehicles in a manner that obstructs or impedes any road, turn row, field access ramp, trail, fire lane, boat ramp, access gate, or other facilities, or in a manner that creates a safety hazard or endangers any person, property, or environmental feature.
- At the owner's expense, we may impound any vehicle left parked in violation.
- Vehicles may not be operated on a flooded road.
- Temporary or permanent closure of refuge areas may occur due to unforeseen circumstances that may not be included in this brochure. Please check for on-the-ground signage and/or updates at kiosks and entry points or refuge website at: [http://www.fws.gov/\(refuge name\)](http://www.fws.gov/(refuge name))

### All-Terrain Vehicles (ATV), Utility Terrain Vehicles (UTV)

ATV/UTV's are prohibited on all refuges except on designated trails at Cat Island NWR.

### Boats

We allow the use of watercraft of all types and means of propulsion on all navigable waters of the refuges in accordance with State regulations subject to the following conditions:

- The refuges allow canoes, pirogues, kayaks, and watercooled inboard/outboard motors. Air boats, marsh buggies, aircraft, mud boats and air-cooled propulsion engines are prohibited, except where allowed on Bogue Chitto NWR. Air cooled engines, except air boats, are permitted on Mandalay NWR. In areas posted as

“nonmotorized boat launch,” we prohibit motorized watercraft year-round except watercraft powered by electric motors or nonmotorized means.

- We prohibit the mooring, beaching, or storing of watercraft (including houseboats) on the refuges. Boats must be used at least once every 24 hours. We define “being used” as a watercraft moved at least 100 feet (30 m) on the water with operator on board. We prohibit the mooring of watercraft within 200 feet (60 m) of refuge boat landings or ramps. Any watercraft moored in violation of regulations may be impounded at the owner's expense.

### Fishing Regulations

- Recreational fishing, crawfishing, and or crabbing are allowed from ½ hour before sunrise until ½ hour after sunset, except where otherwise noted.
- Use of trotlines, limb lines, slat traps, gar sets, or alligator lines is prohibited on all refuges (unless otherwise specified).
- Anglers may enter the refuges from ½ hour before sunrise and must exit no later than ½ hour after sunset, unless otherwise noted.
- All fishing, crabbing, and/or crawfishing equipment must be attended at all times
- These regulations do not supersede any Federal and State requirements for boating, creel limits, and licensing.

### Hunting Regulations

- The incidental take of coyote, raccoon, armadillo, opossum, and feral hogs, is allowed during any open refuge hunting season. Take must be in compliance with the regulations of those seasons. The incidental take of nutria (during waterfowl season only) is allowed with weapons and ammunition allowed during waterfowl season on the refuges.
- While hunting, all persons 15 years of age and under must be in the presence and under direct supervision of a licensed or exempt hunter at least 18 years of age in Louisiana and 21 years of age in Mississippi. A licensed hunter supervising a youth as provided in this section must hold all required licenses and permits. Youths must remain within normal voice contact and direct sight of the adult who is supervising them. Adult guardians are responsible for ensuring that youth hunters do not engage in conduct that would constitute a violation of refuge regulations.

- One adult may only supervise up to two youths during upland and game or migratory bird hunts, but is only allowed to supervise one youth during big game hunts.
- Refuge areas closed to public hunting are marked with “No Hunting Zone” signs and/or shown on the map attached to this brochure.
- Hunters may not enter the refuge before 4 am and must exit no later than two hours after legal sunset for that day.
- Waterfowl hunting must cease by 2 pm when open and all decoys and blinds must be removed by 2 pm each day.

### **Hunter Orange/Blaze Pink**

- All hunters, including archers (while on the ground), except waterfowl hunters (where allowed) must abide by State WMA hunter orange or blaze pink (in LA) regulations during any open deer firearm, and primitive firearm season.
- During any special dog season for rabbit, squirrel, and hog (where allowed), all hunters including archers (while on the ground), except waterfowl hunters must wear a hunter orange or blaze pink (in LA) cap or hat during that dog season.
- Deer gun hunters hunting from a concealed blind (where allowed) must display State WMA hunter orange (or blaze pink in LA) required regulations above or around their blinds which is visible from 360 degrees.
- During any refuge deer gun, primitive weapon, or youth deer firearm hunts, all hunters on the refuge, except waterfowl and dove hunters, must abide by State WMA hunter orange (or blaze pink in LA) regulations.

### **Harvest Reporting**

State hunting reporting requirement applies to all hunting on the refuges.

### **Restricted and/or Closed Areas**

We prohibit hunting or discharge of firearms within 500 feet of any residence or oil and gas infrastructure, or within 200 feet of any road, railroad, levee, water control structure, designated public use trail, building, designated camping area, designated parking area, or other designated public facility within or adjacent to refuge boundaries.

### **Firearms and Ammunition**

- Persons possessing, transporting or carrying firearms on national wildlife refuges must comply with all provisions

of state and local laws. Persons may only use (discharge) firearms in accordance with refuge regulations (50CFR 27.42 and specific regulations in 50CFR Part 32).

- Possession of buckshot, slugs, shotgun lead shot, or any shotgun ammunition other than approved non-toxic shot, or rifle ammunition larger than .22 caliber is prohibited on the refuges, except during deer gun and primitive weapon firearm seasons (where allowed). See specific refuge regulations.
- We only allow non-toxic shot #4 or smaller, rimfire .22 cal or smaller, or air rifles to take squirrel or rabbit. Only non-toxic shot #4 or smaller is allowed for quail or woodcock

### **Bag Limits**

State season, bag and possession limits, and methods of take apply unless otherwise stated. Consult current state regulations for details.

### **Tree Stands**

- Hunting from a permanent tree stand, or from a tree in which a metal object (such as nails, spikes, screws) has been driven is prohibited.
- Valid permit holders are allowed to have only one portable stand on each refuge.
- Hunters may erect temporary deer stands within 48 hours prior to the start of deer archery season. Hunters must remove all deer stands within 48 hours after the last deer season closes on each refuge.
- Deer stands must have owner’s state license/sportsperson’s identification number clearly printed on the stand. All untagged stands are subject to seizure. Stands left on the refuge do not reserve hunting locations.

### **Migratory Birds**

- During the State Season, waterfowl and migratory bird hunting is allowed on Wednesday, Thursday, Saturday and Sunday from ½ hour before sunrise until 2 pm in designated areas of Bayou Sauvage Urban, Big Branch Marsh, Delta, and Mandalay NWRs.
- Bogue Chitto, Bayou Teche and Cat Island NWR’s waterfowl and migratory hunters may hunt until 2 pm on all days of the week (see refuge specific regulations).
- Only temporary blinds are allowed.

- On refuges where waterfowl hunting is allowed, decoys, blinds and spent shells must be removed from the hunting area by 2 pm each day.

### **Small Game**

All hunters using shotguns for small game must use approved non-toxic shot size #4 or smaller. Small game may be hunted with archery equipment, and .17 and .22 caliber rim-fire rifles and air rifles.

### **Other Prohibited Activities**

- All commercial activities, including guiding, outfitting, lodging and club membership or participating in a paid guided trip, including hunting, fishing, or shell fishing.
- Searching for or removing any object of archeological or historical significance, including arrowheads, pottery, pottery shard, or other artifacts.
- Frogging on refuges closed at night.
- Trapping without a special use permit.
- The use of artificial light, including vehicles headlights, to locate or take any animal.
- Use or possession of any drugging device, or deploying any such drug for hunting.
- The possession or use of any flagging or marking devices such as paint, or other substances except reflective tacks.
- Use or possession of alcohol while hunting.
- Fires. Campfires are allowed on Bogue Chitto NWR.
- Camping (other than on Bogue Chitto NWR).
- Littering.
- Organized deer drives.
- The use of deer decoys.
- The possession or distribution of bait while on the refuge and hunting with the aid of bait, including any grain, salt, minerals, or any non-naturally-occurring attractant.
- Use of drones or unmanned aerial vehicles (UAV).
- Overnight parking except where otherwise noted.
- Target shooting.
- Any form of fish snagging.
- Field dressing game or leaving remains within 150 feet of any road, trail or parking lot.

- Leaving personal property, except portable deer stands, on a refuge.
- Tampering with any petroleum facility or equipment.
- Remote cameras, including trail cameras.
- Feeding wildlife.
- Take of turtles, snakes, frogs, or other wildlife not listed in this brochure.
- We prohibit the cutting, removal, or damage of any plant or animal specimens or other natural objects from the refuge without a Special Use Permit. We prohibit attaching nails, screws, spikes, or other hardware to any tree that pierces the bark.

### **Louisiana Black Bear**

Be aware that the Louisiana black bear was recently delisted under provisions of the Endangered Species Act of 1973. It remains unlawful for anyone to take, harass, disturb, etc. any Louisiana black bear.

### **Signs and Boundaries**

Applies to the area located behind the sign.

Please respect the following signs:

- No Vehicles: All traffic prohibited.
- Environmental Education Zone: All hunting prohibited.
- Area Behind This Sign Closed: No public entry. Do not trespass behind this sign unless for emergency.
- Parking Area: Designated areas to park while hunting, fishing or other wildlife oriented public use.
- National Wildlife Refuge Unauthorized Entry Prohibited.
- Refuge Boundary: Entry permitted in accordance with refuge regulations.
- No Hunting Zone: Hunting prohibited.
- No Fishing or Crabbing From Dock: The dock is for boat off loading and boarding only.



- Air-thrust boats, aircraft, mud boats, and air-cooled propulsion engines are prohibited, except hunters may use air-cooled propulsion engines to traverse the refuge through the Intracoastal Waterway and the Irish Bayou Straight Canal.
- See chart for specific season dates and regulations.

### Fishing

- Finfishing and shell fishing are permitted year-round inside the Hurricane Protection Levee and only after 2 pm outside the Hurricane Protection Levee, except the Intracoastal Waterway, from November 1 through January 31, and during the state teal season.
- When fishing is allowed, we only allow sport finfishing with a hand-held rod and reel or hand-held rod and line. Bait shrimp may be taken with cast nets. Crawfish can be taken (up to 100 pounds per person/per day) with wire nets up to 20 inches in diameter. Recreational crabbing is permitted with a limit of 12 dozen per person/per day. Fishing, crabbing and crawfishing equipment must be attended at all times.
- Only outboard motors 25 horsepower or less are permitted in waterways inside the Hurricane Protection Levees. There is no size restriction on outboard motors on waterways outside the Hurricane Protection Levees.

## Bayou Teche NWR

Bayou Teche National Wildlife Refuge, was established in 2001 and is located in St. Mary Parish, Louisiana. The 12,000-acre refuge consists of six separate units, ranging in size from 3,724 acres to 80 acres and is composed of bottomland hardwoods laced with bayous and canals. The refuge consists of lands that are important to the coastal subpopulation of the Louisiana black bear with a primary mission to preserve and manage habitat for the Louisiana black bear. It also provides excellent habitat for wading birds, neotropical songbirds, waterfowl, reptiles and amphibians.

Public use opportunities include bird watching, hiking, wildlife photography, fishing, paddling, environmental education, and hunting.

For more information, visit the refuge website at <https://www.fws.gov/refuge/bayou-teche>

## Refuge Specific Regulations

### Vehicles

- Vehicles are limited to a maximum of 25 mph on refuge roads.

### Boating

- The Franklin Unit canals (Black Bear, Wood Duck, and Alligator) will only be open to motorized boats between April 15 - August 31. The unit is open to nonmotorized boats all year.

### Hiking

- Garden City and North Bend East and West Units: Hiking trails are only open from February 1-September 30.
- Garden City Unit: The Palmetto Trail is minimally maintained and meanders through cypress-tupelo swamp. Waterproof footwear is recommended when wet. The Garden City Boardwalk is open year round and is good for viewing migratory birds.
- Centerville Unit: Hiking trails are only open from February 16-September 30. Trails are established on old dikes created when sugar cane drainage ditches were dug and are minimally maintained, but provide excellent bird watching in a cypress-tupelo swamp.
- Franklin Trail: Open all year.

### Hunting

- Shooting across an agricultural field or canal is prohibited.
- See chart for specific season dates and regulations.
- Waterfowl hunting is closed during refuge gun hunts for deer.
- Scoter Pond is closed to waterfowl hunting.

## Big Branch Marsh NWR

Big Branch Marsh National Wildlife Refuge was established in 1994 and is located in St. Tammany Parish, Louisiana. The refuge encompasses over 19,000 acres of marshes, hardwood hammocks and pine flat woods. Hunting and fishing are popular refuge uses when in season. Other popular activities are trail hiking, paddling and wildlife observation. This refuge contains some of the last large undeveloped natural areas on the north shore of Lake Pontchartrain. Several public roads and boat launches provide access to this urban refuge.

For more information, visit the refuge website at <https://www.fws.gov/refuge/big-branch-marsh>

## **Refuge Specific Regulations**

### **Access**

- Only electric motors are allowed at the boat launch located on Sapsucker Road.
- We allow night fishing, crabbing, and crawfishing only from the bank and pier on Lake Road.

### **Hunting**

- See chart for specific season dates and regulations.

## **Bogue Chitto NWR**

Bogue Chitto Wildlife Refuge was established in 1980 and is located in Washington and St. Tammany Parishes, Louisiana, and Pearl River County, Mississippi. Bogue Chitto is the Choctaw translation of "Big Stream." The refuge is approximately 36,386 acres of bottomland hardwood habitat in the Pearl River Basin with some upland pine habitat. The Pearl River/Bogue Chitto River ecosystem represents a relatively unaltered ecosystem with portions of the river system listed as Scenic Rivers.

Public use opportunities include hunting, fishing, primitive camping, boating, hiking, bird watching, and other types of wildlife observation. Access to the refuge is primarily by boat.

For more information, please visit the refuge website at <https://www.fws.gov/refuge/bogue-chitto>

## **Refuge Specific Regulations**

### **Access**

Houseboats within the refuge boundaries are prohibited except for navigational purposes.

Boats with water cooled engines are allowed.

### **Fishing**

- Limb lines are permitted, but must be 100% cotton. Trotlines are permitted, but must have five feet of cotton line on both ends and be tended every 24 hours. All non-attended fishing gear on or attached to the refuge must be tagged with the owner's State license/sportsperson's identification number.
- The fishing pond at the Pearl River Turnaround is open, except closed from April through the first full week of June. When the pond is open for fishing, non-gas powered boats may be hand launched. The use of this fishing pond area is permitted from 1/2 hour before legal sunrise to 1/2 hour after legal sunset. When open, we only allow hook and line

as a legal method of take in the fishing ponds at the Pearl River Turnaround.

- Frogging allowed per state regulations.

### **Camping**

- Primitive camping is permitted within 100 feet of either bank of the Bogue Chitto River, Wilson Slough, West Pearl River south of Wilson Slough, and refuge lands along the East Pearl River and Holmes Bayou.
- Campsites cannot be left unattended longer than 24 hours. Campsites cannot be established longer than 14 consecutive days. Campers must mark their campsite with the owner's State license/sportsperson's identification number, and dates of occupancy in a conspicuous location at the front of the tents.
- Camp fires allowed.

### **Refuge Closure**

- The refuge will be closed to camping and all hunting, except waterfowl, when the Pearl River reaches 15.5 feet on the gauge at Pearl River. Call the National Weather Service at 985-649-0357 for current reading. For more information, visit <https://water.weather.gov/ahps2/hydrograph.php?gage=perl1&wfo=lix>
- In the event the refuge is closed during the deer gun hunts due to high water, alternative hunt days may be provided. Details will be provided in an informational bulletin and on the refuge website: <https://www.fws.gov/refuge/bogue-chitto>. (Proposed dates are from the end of last deer gun hunt on the refuge until the end of state deer season; but only as many days as lost from the high water closure.)

### **Hunting**

- See chart for specific season dates and regulations.

## **Breton NWR**

Breton National Wildlife Refuge was established in 1904 and is the second oldest refuge in the National Wildlife Refuge System. The refuge is approximately 1,500 acres of barrier islands located in the St. Bernard and Plaquemines Parish.

Public use activities are fishing, photography and bird watching. Access to the refuge is by boat only across open waters of the Breton Sound. Breton NWR has one of the largest nesting colonies of Eastern Brown Pelicans, wintering migration habitat for Piping Plover, Red Knot, and other shorebirds.



For more information, visit the refuge website at <https://www.fws.gov/refuge/breton>

### Refuge Specific Regulations

- Public hunting is prohibited on Breton NWR.
- Areas closed to bird nesting will be posted with closure signs.
- Tracked/wheeled/motorized vehicles are prohibited.

### Fishing

- We allow sport finfishing and shellfishing on designated areas of the refuge, including within 800 feet from the low water mark.
  - Crabbers must tend crabbing equipment at all times.
  - We prohibit the use of trotlines, slat traps, and nets.
- We allow only finfishing with rod and reel or pole and line.
- We do not allow commercial fishing within refuge lands or within 800 feet from the low water mark.

## Cat Island NWR

The 12,973 acre refuge is located near the town of St. Francisville, Louisiana, 30 miles north of Baton Rouge, Cat Island National Wildlife Refuge conserves some of the region's last naturally functioning bottomland hardwood forest habitat. The Mississippi River carved this unique landscape of ridges and swales, cypress-tupelo swamps, meandering drains and backwater sloughs. These features coupled with annual flooding provide highly productive habitat for diverse fish and wildlife including backwater fisheries, migratory songbirds, wintering waterfowl, Louisiana black bear, and other resident wildlife.

Visitors enjoy fishing, hunting, hiking, paddling, wildlife viewing, and wildlife photography and observation. The refuge is home to a national champion bald cypress, one of the largest tree of any species east of the Sierra Nevada mountain range. Estimated to be about 1,500 years old, the tree is 96 feet tall, 17 feet in diameter and 56 feet in circumference.

### Refuge Specific Regulations

#### ATV/UTVs

- ATV/UTV size requirements and tire size are defined by state WMA Regulations.

- Portions of the Wood Duck Trail are open throughout the year for fishing access (see refuge specific map).
- ATV/UTVs may only be used for hunting and or fishing purposes.
- ATV/UTVs may only be used on designated ATV/UTV trails (see map) and are not allowed off trails.
- Deer stands must be off the refuge 48 hours after season closes and the ATV/UTV trails will remain open during that 48 hour period.

### Access

- Hunters may not enter the refuge from private property or from public waterways. The only access is through the front gate located off of Creek Road.
- All boats must be hand launched on the refuge, except in the designated boat ramp. No motorized boats are allowed. Only paddling or trolling motors are approved.
- For Mississippi River stages go to: [https://www.weather.gov/lmrfc/obsfcst\\_mississippi](https://www.weather.gov/lmrfc/obsfcst_mississippi)
- Trails close to ATV/UTV access from the last day of hunting season until the 3rd weekend in September. (Exception: Portions of Wood Duck Trail that allow ATV/UTV access to the fishing holes. See refuge map.)

### Hunting

- All other refuge hunts are closed during the refuge primitive firearm hunts, except youth and veteran's waterfowl hunts when they overlap. Where they overlap, waterfowl hunters are required to wear state approved hunter orange or blaze pink while traveling to and from their hunting blinds.
- ATV/UTV trails are open for scouting the third Saturday in September.

### Crawfishing

- Recreational traps must be marked with a waterproof tag with the name and state recreational gear license number of the angler legally printed on the tag. Only 20 traps per angler are permitted on the refuge at the same time.
- Harvest limit is 50 pounds per person per day.
- All traps and nets must be tended at all times and may not be left on the refuge overnight.

For more information, visit the refuge website at <https://www.fws.gov/refuge/cat-island>

## **Delta NWR**

### **Refuge Specific Regulations**

Delta National Wildlife Refuge was established in 1935 and is located in Plaquemines Parish, Louisiana. The refuge is approximately 48,800 acres of marsh and open water. These lush wetlands and marshes provide habitat for migratory birds, a multitude of fish and wildlife species and serve as a nursery for the rich aquatic resources of the region. The refuge was established to provide sanctuary and habitat for wintering waterfowl. Access to the refuge is by boat only. Activities on the refuge include fishing, hunting, photography, bird watching and boating.

The Mississippi flyway is an important migration corridor for hundreds of North American bird species. The refuge provides resting and recovery habitat for trans-Gulf migrant birds such as neotropical passerines — and wintering habitat for hundreds of thousands of waterfowl.

For more information, visit the refuge website at <https://www.fws.gov/refuge/delta>

- All public entry is prohibited between Main Pass and Raphael Pass during state waterfowl and light goose conservation season.
- Boats with water cooled engines are allowed.
- Refuge users are highly encouraged to wear hunter orange or blaze pink cap or hat during upland game seasons.

### **Hunting**

- See chart for specific season dates and regulations.

### **Fishing**

During State waterfowl hunting seasons, we only allow recreational fishing from 2 pm until ½ hour after legal sunset on lands northwest of Main Pass and/or south of Raphael Pass.

- Commercial fishing prohibited.

## **Mandalay NWR**

Mandalay National Wildlife Refuge was established in 1996 and is located in Terrebonne Parish, Louisiana. The 4,416 acre refuge is composed of freshwater marsh and cypress-tupelo swamp. The refuge provides excellent habitat for waterfowl, wading birds, and neotropical songbirds. Most of the refuge access is by boat only and foot travel is extremely difficult due to the soft marsh environment. The Mandalay Refuge Nature

Trail provides a glimpse into three different habitat types within a 45-minute hike.

Public use opportunities include bird watching, hiking, wildlife photography, fishing, environmental education, and youth wildlife hunting.

For more information, visit the refuge website at <https://www.fws.gov/refuge/Mandalay/>

### **Refuge Specific Regulations**

- Access to the Mandalay Nature Trail parking area is by vehicle only. All visitors to the nature trail must remain in their vehicles until arriving at the designated parking area.
- Motorized vehicles are prohibited on the nature trail.

### **Hunting**

- All migratory bird and small game hunts are considered youth hunts. Youth age of 15 or younger must be supervised by an adult. The youth must be capable of and must actively participate in such hunt by the possession and/or firing of a legal weapon during the hunt for the express purpose of harvesting game.
- Supervising adults accompanying youth on refuge hunts may participate by hunting their own daily bag limit.
- See chart for specific season dates and regulations.
- Only the Hanson Unit is open to youth hunting of migratory bird, waterfowl, and goose and only on Wednesday, Thursday, Saturday, or Sunday until 2 pm.
- The Hanson Unit is closed to youth upland game hunting prior to 2 pm during Wednesday, Thursday, Saturday and Sunday of the waterfowl hunt season.

### **Fishing**

During state waterfowl season, we only allow recreational fishing on Wednesday, Thursday, Saturday and Sunday from 2 pm until ½ hour after legal sunset in Hatch Lake and the Hanson Unit.

Species	Bayou Sauvage Urban	Bayou Teche	Big Branch Marsh	Bogue Chitto	Cat Island	Delta	Mandalay
Youth – Waterfowl	State Season until 2 pm (accompanying adult cannot hunt)	State Season until 2 pm	State Season until 2 pm	State Season until 2 pm	State Season until 2 pm	State Season until 2 pm	State Season until 2 pm on Hanson unit
Honorably discharged veterans - Waterfowl	Closed	State Season until 2 pm	State Season until 2 pm	State Season until 2 pm	State Season until 2 pm	State Season until 2 pm	Closed
Waterfowl, including Teal, Coots, and Geese	Youth only on Wed., Thu., Sat., and Sun. of State Seasons, including the light goose conservation season, until 2 pm. (Supervising adult may hunt)	State Seasons, including the light goose conservation season, until 2 pm. Closed during refuge deer gun hunts.	Wed., Thu., Sat., and Sun. of State Seasons, including the light goose conservation season, until 2 pm.	State Seasons, including light goose conservation season, until 2 pm.	State Seasons, including light goose conservation season, until 2 pm.	Wed., Thu., Sat., and Sun. of State Seasons, including the light goose conservation season. (Hunting is only allowed on those portions of the refuge northwest of Main Pass and south of Raphael Pass.)	On the Hanson Unit only: Youth only on Wed., Thu., Sat., and Sun. of State Seasons until 2 pm, including the light goose conservation season. (Supervising adult may hunt.)
Deer – Primitive Firearm/ Primitive Weapon	Closed	Closed	Closed	January 20-31, 2024 (last 11 days of January). Still hunt only. No dogs. Either sex.	Nov. 11-12, 2023 Either sex. One deer per day. No dogs.	Closed	Closed
Archery	State Season. No dogs. Youth only. (Accompanying adult may hunt)	State Season (Closed during refuge deer gun hunts) No dogs.	State Season. No dogs.	State Season. No dogs. Archery allowed during MS primitive weapon and gun hunt days. Either sex.	State Season Either sex, unless a buck. Only firearms season is in progress. No dogs.	Oct. 1-15, 2023 (Bucks Only). Oct. 16-31, 2023 and from the day after the close of the state regular waterfowl season until the end of the state deer archery season (either sex). No dogs.	State Season, except closed on the Hanson Unit during refuge waterfowl season (before 2 pm on Wed., Thu., Sat. and Sun.) No dogs.  Either sex, unless a Bucks Only firearms season is in progress. One deer per day. (Accompanying adult may hunt.)
Youth – Deer Gun	Closed	Oct. 28-29, 2023 Either sex. One deer per day. No dogs.	Closed	Nov.3-5, 2023 (LA and MS) Still hunt only. No dogs. Either sex.	First weekend of state youth hunt. No dogs.	Closed	Closed
Honorably discharged veterans - Deer gun	Closed	Closed	Closed	Oct. 28-29, 2023 (LA only) Still hunt only. No dogs. Either sex.	First weekend of state youth hunt. No dogs.	Closed	Closed

Species	Bayou Sauvage Urban	Bayou Teche	Big Branch Marsh	Bogue Chitto	Cat Island	Delta	Mandalay
Deer-Gun	Closed	Last Fri., Sat., And Sun. in Nov.  One deer per day.  No dogs.	Closed	Nov. 18-26, 2023 (Sat. before Thanksgiving week for 9 days)  Dec. 23-31, 2023 (Sat. before Christmas week for 9 days)  Either sex.  Still hunt only.  No dogs.	Closed	Dec. 9-10, 2023.  Shotgun only, either sex.  No dogs.	Closed
Squirrel	Closed	State Season until close of state waterfowl season (State zones vary by unit), including spring squirrel season.  Closed during refuge gun deer hunts.  Dogs prohibited.	State Season, including spring squirrel season. Shotguns: non-toxic shot only, shot size must be #4 or smaller.  Only rimfire rifles size .22 or smaller are permitted.  Air rifles allowed.  Dogs allowed after archery season closed.	State Season, including spring squirrel season and MS youth season. Closed during all deer gun and primitive firearm hunts.  Shotguns: non-toxic shot only, shot size must be #4 or smaller.  Only rimfire rifles size .22 or smaller are permitted.  Air rifles allowed.  Dogs allowed from Mon. after the third Sat. in Oct. until the last day of Feb.	State Season including spring season.  Closed during primitive firearm, youth deer, and honorably discharged firearm seasons.  Dogs allowed from Jan. 1, 2024 until the last day of Feb.	Closed	Youth only during State Season, including spring squirrel season.  Hunters must possess non-toxic shot size 4 or smaller or .22 caliber rimfire rifles or smaller.  Air rifles allowed.  In the Hanson unit, youth squirrel hunting is prohibited prior to 2 pm on Wed., Thu., Sat., or Sun. during the waterfowl seasons.  Dogs prohibited.  (Accompanying adult may hunt.)
Rabbit without Dogs	State Season outside hurricane protection levee.  Youth only.  (Accompanying adult may hunt.)	State Season until close of state waterfowl season, including spring squirrel season.  (State zones vary by unit).  Closed during refuge gun deer hunts.	State Season. Shotguns: non-toxic shot only, shot size must be #4 or smaller.  Only rimfire rifles size .22 or smaller are permitted.  Air rifles allowed.	State Season.  Closed during all deer gun and primitive firearm hunts.  Shotguns: non-toxic shot only, shot size must be #4 or smaller.  Only rimfire rifles size .22 or smaller are permitted.  Air rifles allowed.  Dogs allowed after archery season closed.	State Season. Closed during primitive firearm, youth deer, and honorably discharged firearm seasons.	From the day after the last state duck season closes to the end of state rabbit season.	Youth only during State Season.  Hunters must possess non-toxic shot size 4 or smaller or .22 caliber rimfire rifles or smaller.  Air rifles allowed.  In the Hanson unit, youth rabbit hunting is prohibited prior to 2 pm on Wed., Thu., Sat., or Sun. during the waterfowl seasons.  (Accompanying adult may hunt.)

Species	Bayou Sauvage Urban	Bayou Teche	Big Branch Marsh	Bogue Chitto	Cat Island	Delta	Mandalay
Rabbit with Dogs	State Season outside hurricane protection levee  Youth only. (Accompanying adult may hunt)	Closed	Feb. 1- 29, 2024. Shotguns: non-toxic shot only, shot size must be #4 or smaller.  Only rimfire rifles size .22 or smaller are permitted.  Air rifles allowed.  Dogs allowed after archery season closed.	Mon. after the third Sat. in Oct., until the last day of Feb.  Closed during all deer gun hunts.	Jan. 1, 2024 until the end of Feb.	From the day after the last state duck season closes to the end of state rabbit season.	Closed
Turkey	Closed	Closed	Closed	Closed for the 2023-2024 season	Closed	Closed	Closed
Gallinule, Rail, and Snipe	Wed., Thu., Sat., and Sun. of State Season until 2 pm.  Only non-toxic shot size #4 or smaller allowed.  Youth only. (Accompanying adult may hunt.)	State Season until 2 pm.  Only non-toxic shot size #4 or smaller allowed.	Wed., Thu., Sat., and Sun. of State Season until 2 pm.  Only non-toxic shot size #4 or smaller allowed.	Gallinule: State Season until 2 pm.  Rail & snipe: State Season  Shot size #4 or smaller.	State Season until 2 pm.	Wed., Thu., Sat., and Sun. of State Season until 2 pm.  Only non-toxic Shot size #4 or smaller allowed.	Only the Hanson Unit is open only to youth on Wed., Thu., Sat., and Sun. of State Seasons until 2 pm. (Accompanying adult may hunt.)
Frog	Closed	Closed	State Season.  Closed at night, except Lake Road area.	State Season	Closed	Closed	Closed
Woodcock	Closed	State Season	State Season until 2 pm.  Only non-toxic shot size #4 or smaller allowed.	State Season until 2 pm.  Only non-toxic shot size #4 or smaller allowed.	State Season until 2 pm.	Closed	Closed
Quail	Closed	Closed	State Season until 2 pm.  Only non-toxic shot size #4 or smaller allowed.	State Season until 2 pm	Closed	Closed	Closed
Dove	Wed., Thu., Sat., and Sun. of State Season until 2 pm.  Only non-toxic shot size #4 or smaller allowed.  Youth only. (Accompanying adult may hunt)	State Season. State zones vary.	Wed., Thu., Sat., and Sun. of State Season until 2 pm.	State Season	State Season	Wed., Thu., Sat., and Sun. of State Season until 2 pm.  Only non-toxic shot allowed.	Only the Hanson Unit is open and only to youth dove hunting on Wed., Thu., Sat., and Sun. of State Seasons until 2 pm.  (Accompanying adult may hunt)

Species	Bayou Sauvage Urban	Bayou Teche	Big Branch Marsh	Bogue Chitto	Cat Island	Delta	Mandalay
Nutria	Incidental to refuge waterfowl season with weapons and ammunition approved for that season.	Incidental to refuge waterfowl season with weapons and ammunition approved for that season.	Incidental to refuge waterfowl season with weapons and ammunition approved for that season.	Incidental to refuge waterfowl season with weapons and ammunition approved for that season.	Incidental to refuge waterfowl season with weapons and ammunition approved for that season.	Incidental to refuge waterfowl season with weapons and ammunition approved for that season.	Incidental to refuge waterfowl season with weapons and ammunition approved for that season.
Beaver	Closed	Closed	Closed	Closed	Closed	Closed	Closed
Hog-Dog only	Closed	Closed	Closed	February: Hogs may only be taken with the aid of trained dogs.  All hogs must be killed prior to removal from the refuge.  Only shotguns with non-toxic shot or .22 cal or smaller rifles or pistols allowed.	Closed	Closed	Closed
Raccoon Opossum Coyote, Feral Hog, Armadillo	Incidental to any refuge open season with weapons and ammunition approved for that season.	Incidental to any refuge open season with weapons and ammunition approved for that season.	Incidental to any refuge open season with weapons and ammunition approved for that season.	Incidental to any refuge open season with weapons and ammunition approved for that season.	Incidental to any refuge open season with weapons and ammunition approved for that season.	Incidental to any refuge open season with weapons and ammunition approved for that season.	Incidental to any refuge open season with weapons and ammunition approved for that season.

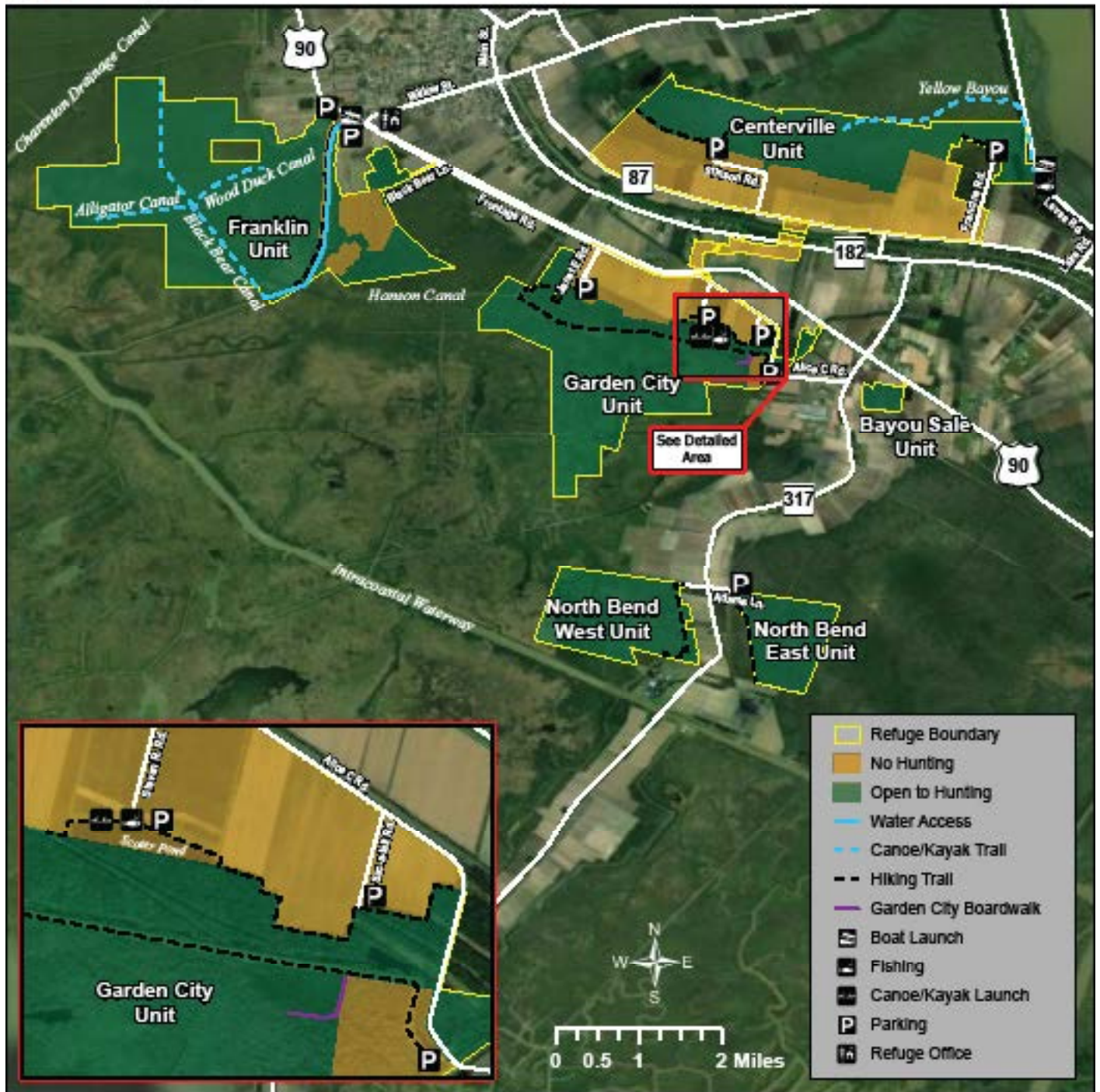




# U.S. Fish & Wildlife Service

## Bayou Teche National Wildlife Refuge

St. Mary Parish, Louisiana



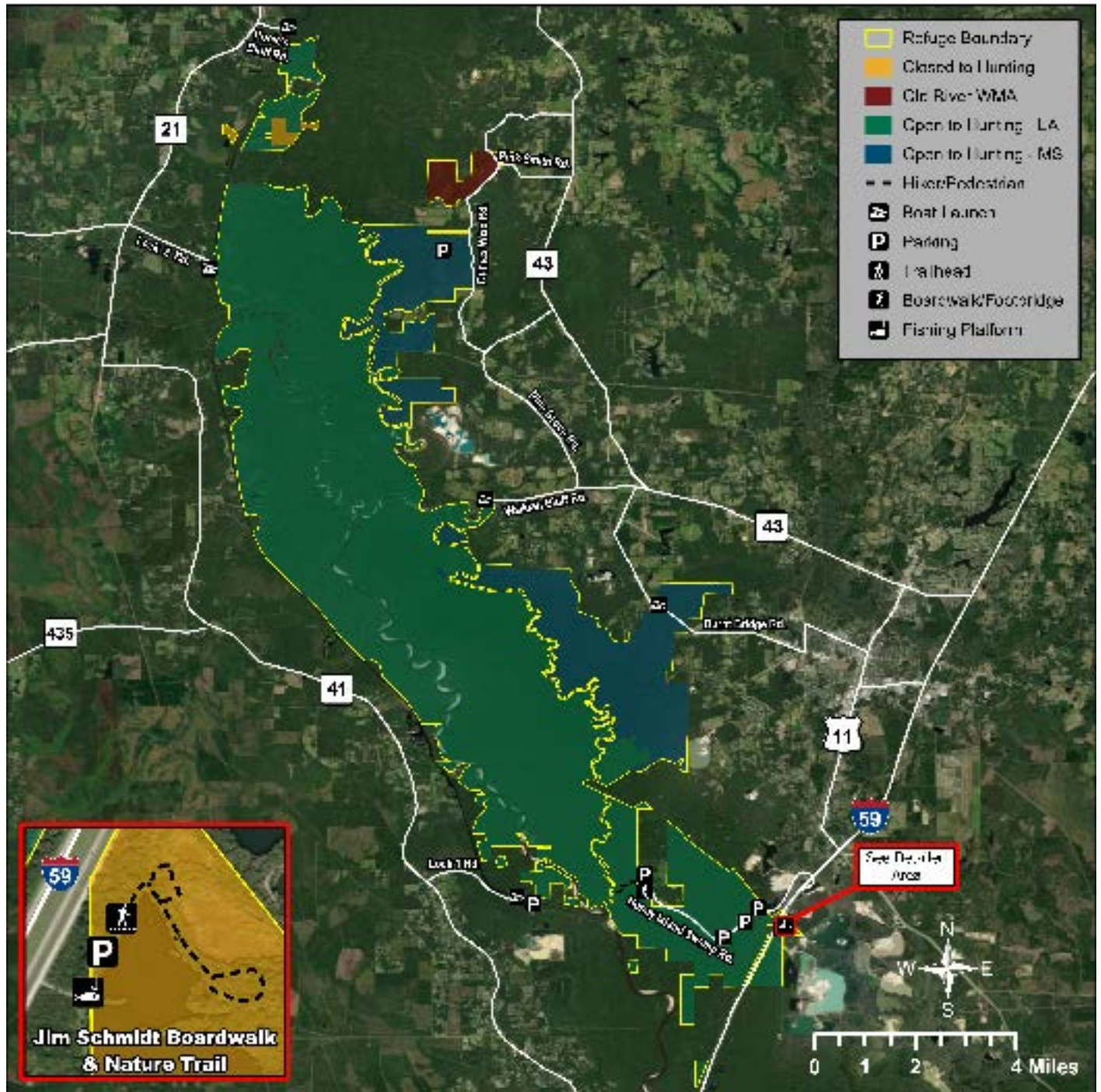






### Bogue Chitto National Wildlife Refuge

St. Tammany Parish and Washington Parish, Louisiana and Pearl River County, Mississippi

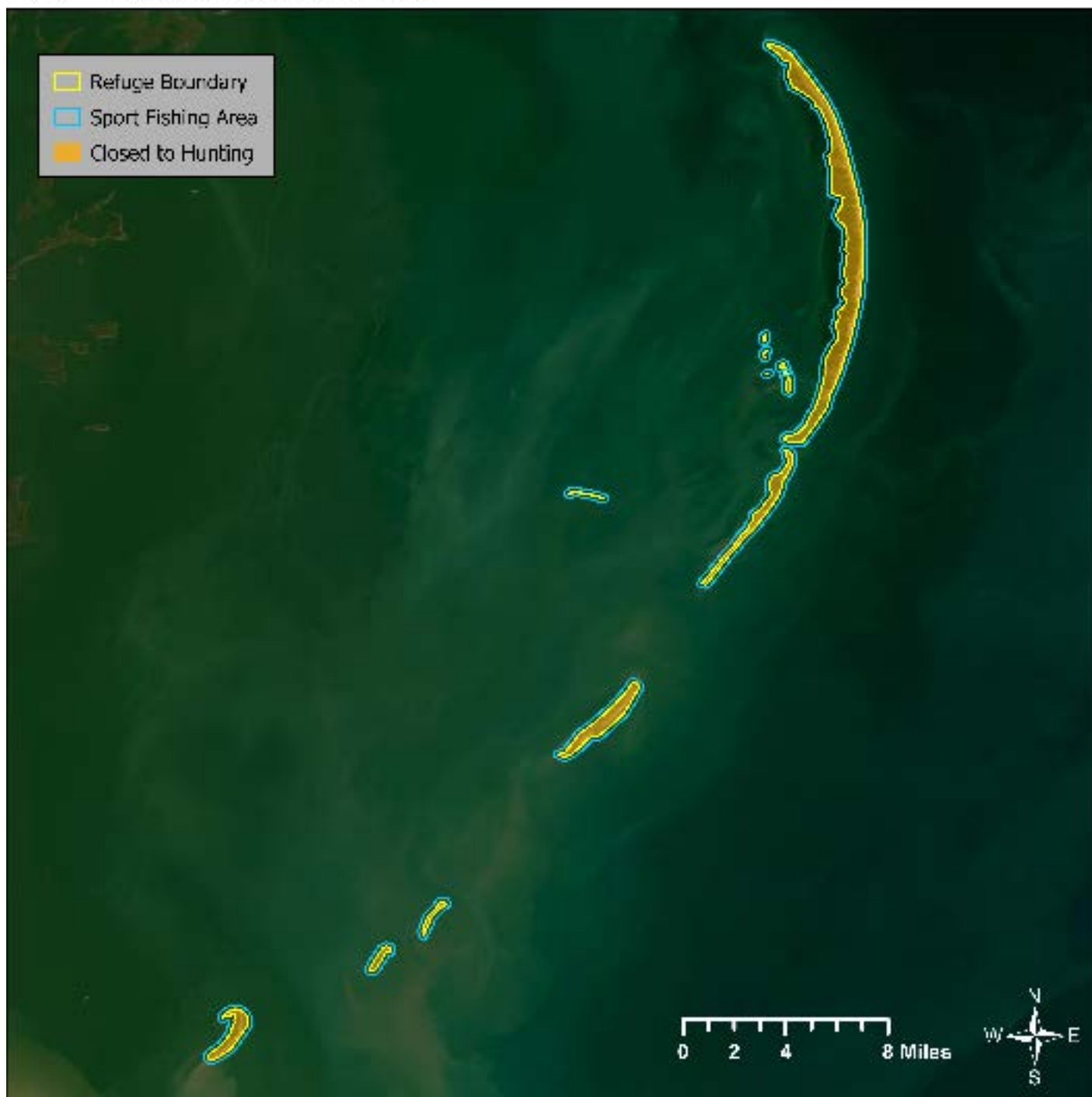


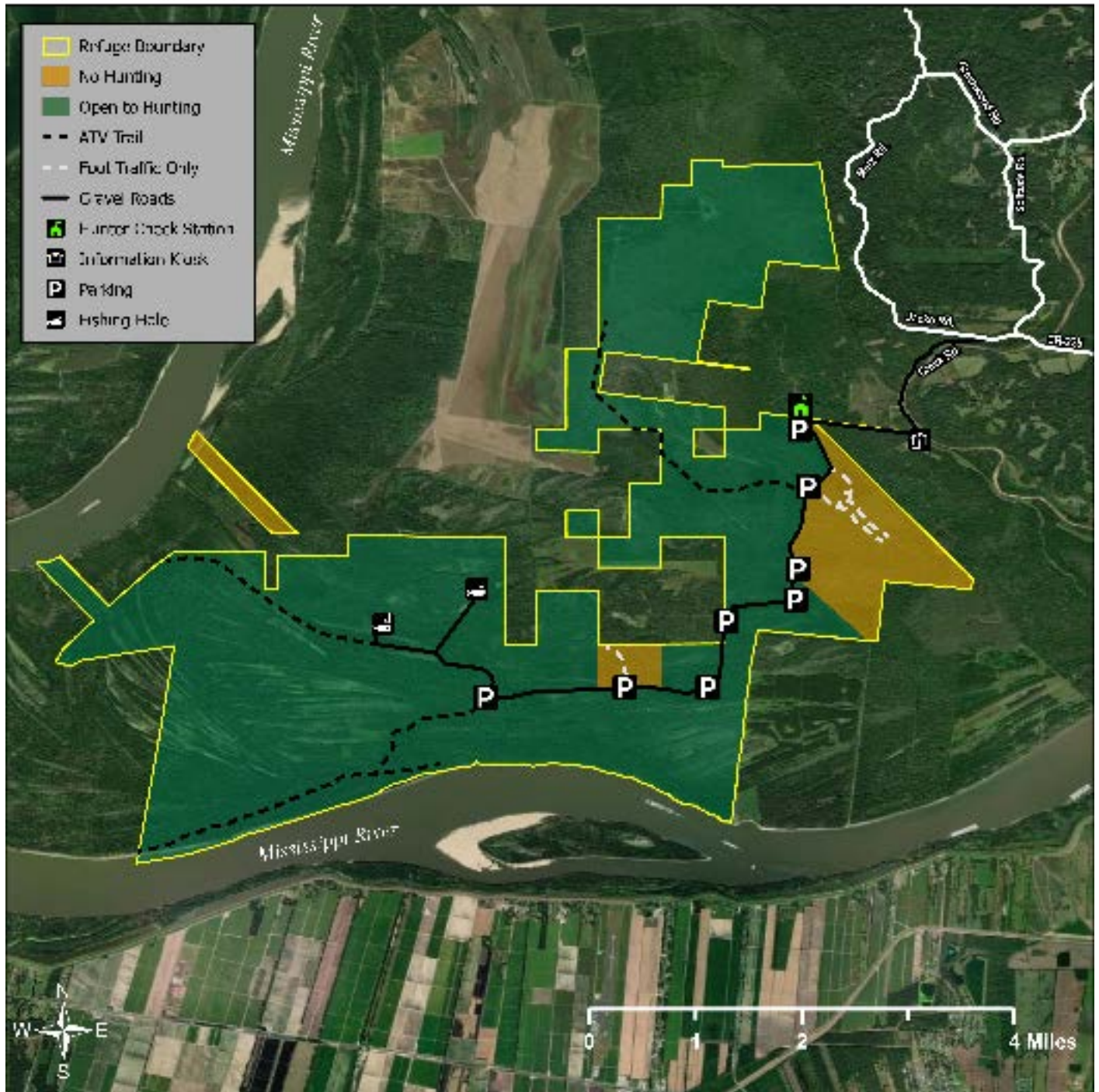


U.S. Fish & Wildlife Service

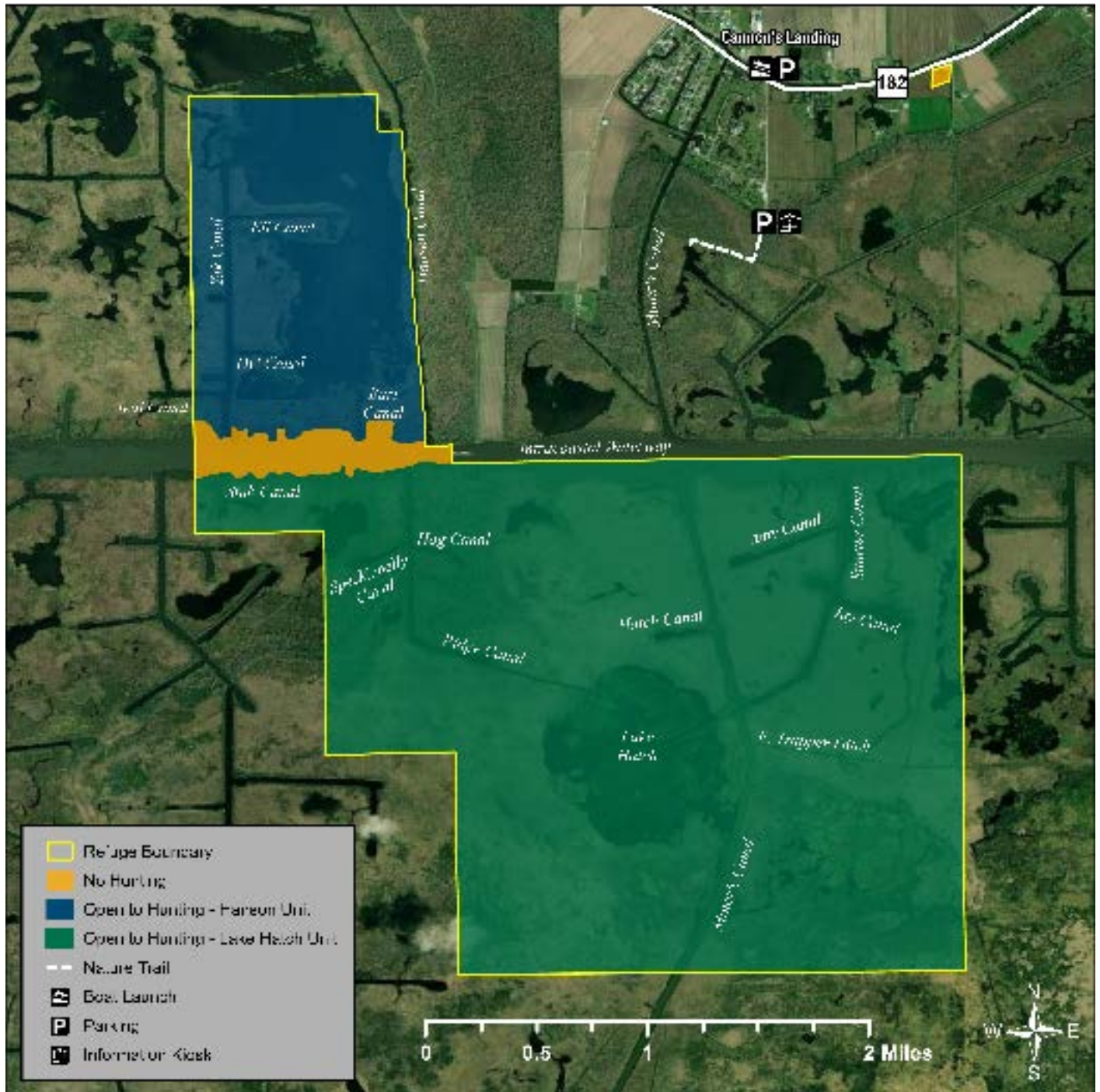
## Breton National Wildlife Refuge

Terrebonne Parish and St. Bernard Parish, Louisiana









# **Southeast Louisiana Refuges Complex**

**61389 Highway 434**

**Lacombe, LA 70445**

**U.S. Fish & Wildlife Service**

**phone: 985-882-2000 Headquarters Office**

**[https://www.fws.gov/refuge/big-branch-marsh/  
visit-us](https://www.fws.gov/refuge/big-branch-marsh/visit-us)**

**June 2023**

