

Theodore Roosevelt

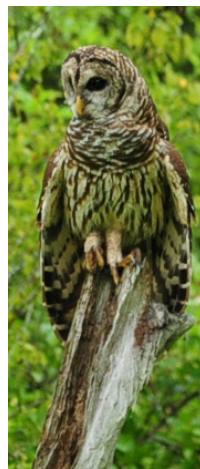
*National
Wildlife
Refuge
Complex
Bird Checklist*



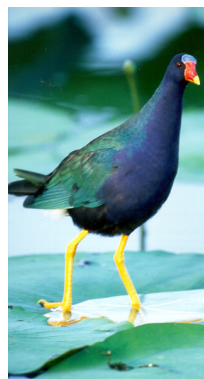
Welcome to the Theodore Roosevelt National Wildlife Refuge Complex. The seven Refuges in the Complex are all located in the South Delta of Mississippi and total approximately 100,000 acres. The Refuges are Hillside, Holt Collier, Mathews Brake, Morgan Brake, Panther Swamp, Theodore Roosevelt, and Yazoo. There are over 560 NWRs; Theodore Roosevelt NWR and Holt Collier NWR are the only Refuges named for a President and an African American, respectively. The habitats found here include bottomland hardwood forest, canebrake, swamp, bayou, and grassland. Resident and migratory birds thrive on the habitats found here.



This blue goose, designed by J. N. "Ding" Darling, has become a symbol of the National Wildlife Refuge System.



Barred Owl, credit Renee Tressler



Purple Gallinule, credit Michael Kelly

Cover: Red-bellied Woodpecker, credit Michael Kelly

About This Checklist

This bird checklist includes over 240 species and is designed to be informative and simple to use. Symbols which appear in this checklist represent the following:

Seasonal Appearance

Sp..... Spring (March- May)
S Summer (June- August)
F Fall (September-November)
W Winter (December-February)

Seasonal Abundance

A- Abundant: A species found in large numbers
C- Common: Present in moderate numbers and usually found in suitable habitat
U- Uncommon: Present yet may not be seen
O- Occasional: Seen only a few times during a season. Occurs in very small numbers
R- Rare: Seen some years
*- Known or suspected to breed on the refuge

Seasonal Highlights

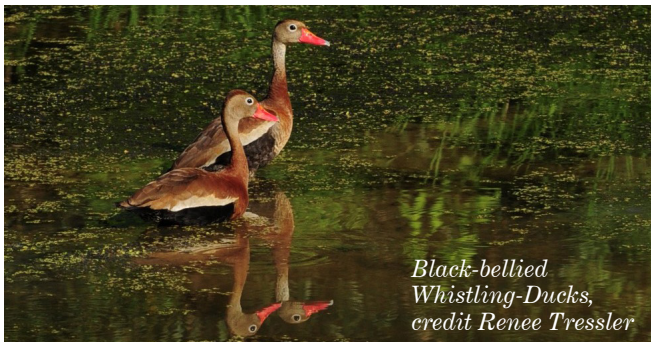
Spring and Fall: Shorebirds, songbirds and raptors migrate in large numbers.

Summer: Herons, Egrets, and Prothonotary Warblers are some of the more common nesting species. Acadian Flycatcher, Northern Parula, and Yellow-billed Cuckoo nest in smaller numbers.

Winter: Hundreds of thousands of ducks and geese depend on the Refuges for food, rest, and shelter.

Want to help your Refuges?

Submit your bird sightings on <https://ebird.org>. eBird helps inform staff, researchers, and the public about bird distribution, abundance, and habitat use. Found an unlisted species? Please let us know at the nearest Refuge office. We welcome your help in updating our records.



Black-bellied Whistling-Ducks, credit Renee Tressler

Birding Information: New to the Complex? Not sure where to start your birding adventure? Here is some information that will make your visit a smooth and unique one!

Watching Wildlife: Try to schedule your visit early in the morning or late in the day when wildlife is more active. Take a drive through one of the Refuges or walk on one of the trails.

Best Locations around the Complex

Hillside: Blisdale Swamp and Alligator Slough Boardwalk offer the best overall birding.

Holt Collier: Driving Greer Road offers the best opportunities to see many birds. Avoid this area when the roads are wet.

Mathews Brake: Utilize the boat ramp and bring a kayak or canoe to get the most out of this gorgeous Refuge.

Morgan Brake: Morgan Bayou Trail winds through a mature bottomland hardwood forest. Walking the levees near the public fishing pond offers wetland birding.

Panther Swamp: Check out the East Levee wetland and rookery, Gumbo Acres, and enjoy birds from the picnic tables near the office.

Theodore Roosevelt: The Visitor Center is here!

Yazoo: The Holt Collier Boardwalk offers a great walk through a mature bottomland hardwood forest. Alligator Pond Observation Tower looks into a wetland and offers a gorgeous view and excellent birding.



Lunar Eclipse, credit Renee Tressler

Common Name Waterfowl	SP	S	F	W
Black-bellied Whistling-Duck *	U	C	C	R
Snow Goose	-	-	U	A
Ross's Goose	-	-	-	C
Greater White-fronted Goose	-	-	-	C
Canada Goose *	O	O	O	O
Trumpeter Swan	-	-	-	R
Tundra Swan	-	-	-	R
Wood Duck *	C	C	C	C
Blue-winged Teal	U	O	U	U
Northern Shoveler	U	-	U	A
Gadwall	U	-	U	A
American Wigeon	O	-	O	U
Mallard	U	-	U	A
American Black Duck	-	-	-	O
Northern Pintail	U	-	U	C
Green-winged Teal	U	-	U	A
Canvasback	-	-	-	O
Redhead	-	-	-	O
Ring-necked Duck	U	-	U	U
Greater Scaup	-	-	O	O
Lesser Scaup	O	-	O	O
Bufflehead	-	-	U	U
Hooded Merganser *	O	O	O	U
Ruddy Duck	U	-	O	O

Gallinaceous Birds

Northern Bobwhite *	O	O	O	O
Wild Turkey *	U	U	U	U

Grebes

Pied-billed Grebe *	C	C	C	C
Eared Grebe	R	-	-	R

Pelicans and Allies

American White Pelican	O	-	O	O
Neotropic Cormorant *	O	O	-	-
Double-crested Cormorant *	U	U	U	C
Anhinga *	C	C	C	-

Bitterns and Herons

American Bittern	O	-	O	R
Least Bittern *	C	C	U	-
Great Blue Heron *	C	C	C	U
Great Egret *	A	A	A	U
Snowy Egret *	C	C	C	-
Little Blue Heron *	C	C	C	-
Tricolored Heron *	U	U	U	-
Cattle Egret *	C	C	C	-

Common Name	<i>SP</i>	<i>S</i>	<i>F</i>	<i>W</i>
Green Heron *	C	C	C	-
Black-crowned Night-Heron *	U	U	U	-
Yellow-crowned Night-Heron *	C	C	C	-

Ibises

White Ibis *	C	A	C	O
Glossy Ibis	O	O	O	-
White-faced Ibis *	O	O	O	R

Spoonbill

Roseate Spoonbill *	O	O	O	-
---------------------	---	---	---	---

Stork

Wood Stork	-	O	U	-
------------	---	---	---	---

Vultures

Black Vulture *	U	U	U	U
Turkey Vulture *	C	C	C	C

Osprey Kites Hawks and Eagles

Osprey	R	-	R	R
Mississippi Kite *	A	C	U	-
Bald Eagle *	O	O	O	C
Northern Harrier	U	-	U	C
Sharp-shinned Hawk	O	-	O	O
Cooper's Hawk	U	-	U	U
Red-shouldered Hawk *	U	U	U	U
Broad-winged Hawk	U	-	U	-
Red-tailed Hawk *	U	U	U	C
Golden Eagle	-	-	-	R

Falcons

American Kestrel *	O	O	O	U
Merlin	-	-	-	R
Peregrine Falcon	-	-	-	O

Rails and Allies

King Rail	R	R	R	-
Sora	C	-	C	R
Purple Gallinule *	U	C	U	-
Common Gallinule *	C	C	C	R
American Coot	C	O	C	C

Crane

Sandhill Crane	R	-	R	R
----------------	---	---	---	---

Common Name	<i>SP</i>	<i>S</i>	<i>F</i>	<i>W</i>
--------------------	-----------	----------	----------	----------

Plovers

Black-bellied Plover	O	-	O	-
American Golden-Plover	O	-	O	-
Semipalmated Plover	O	-	O	-
Killdeer *	C	C	C	C

Stilt and Avocet

Black-necked Stilt	O	-	O	-
American Avocet	O	-	O	-

Sandpipers

Upland Sandpiper	O	-	O	-
Red Knot	-	-	R	-
Stilt Sandpiper	O	-	-	-
Dunlin	O	-	-	-
Baird's Sandpiper	O	-	O	-
Least Sandpiper	O	-	O	-
Pectoral Sandpiper	O	-	O	-
Short-billed Dowitcher	O	-	O	-
Long-billed Dowitcher	-	-	O	-
American Woodcock *	U	-	U	U
Wilson's Snipe	U	-	U	C
Spotted Sandpiper	O	-	O	-
Solitary Sandpiper	C	-	O	-
Lesser Yellowlegs	C	-	C	O
Willet	-	-	O	-
Greater Yellowlegs	C	-	U	O

Gull

Ring-billed Gull	O	-	O	O
------------------	---	---	---	---

Pigeons and Doves

Rock Pigeon *	O	O	O	O
Eurasian Collared-Dove *	O	O	O	O
White-winged Dove	R	-	R	-
Mourning Dove *	C	C	C	C

Cuckoo

Yellow-billed Cuckoo *	C	C	U	-
------------------------	---	---	---	---

Owls

Barn Owl *	O	O	O	O
Eastern Screech-Owl *	O	O	O	O
Great-horned Owl *	U	U	U	U
Barred Owl *	C	C	C	C
Short-eared Owl	-	-	-	O

Common Name	SP	S	F	W
Goatsuckers				
Common Nighthawk	0	-	0	-
Chuck-will's-widow	0	-	0	-
Eastern Whip-poor-will	0	-	0	-

Swift				
Chimney Swift *	U	U	U	-

Hummingbird				
Ruby-throated Hummingbird *	C	C	C	-
Rufous Hummingbird	-	-	R	R

Kingfisher				
Belted Kingfisher *	U	U	U	U

Woodpeckers				
Red-headed Woodpecker *	U	U	U	C
Red-bellied Woodpecker *	C	C	C	C
Yellow-bellied Sapsucker	U	-	U	C
Downy Woodpecker *	C	C	C	C
Hairy Woodpecker *	U	U	U	U
Northern Flicker *	C	U	U	C
Pileated Woodpecker *	C	C	C	C

Tyrant Flycatchers				
Olive-sided Flycatcher	R	-	R	-
Eastern Wood-Pewee *	C	C	U	-
Yellow-bellied Flycatcher	-	-	R	-
Acadian Flycatcher *	C	C	U	-
Least Flycatcher	R	-	R	-
Eastern Phoebe *	C	0	U	C
Great Crested Flycatcher *	C	C	U	-
Western Kingbird	R	-	R	-
Eastern Kingbird *	U	U	U	-

Shrike				
Loggerhead Shrike *	0	0	0	0

Vireos				
White-eyed Vireo *	C	C	U	-
Yellow-throated Vireo *	U	U	U	-
Blue-headed Vireo	U	-	U	U
Philadelphia Vireo	0	-	R	-
Warbling Vireo	0	-	0	-
Red-eyed Vireo *	U	C	U	-

Common Name	SP	S	F	W
Jay and Crows				
Blue Jay *	C	C	C	C
American Crow *	C	C	C	C
Fish Crow *	U	U	U	U

Lark				
Horned Lark *	0	0	0	0

Swallows				
Purple Martin *	U	0	U	-
Tree Swallow *	U	0	U	0
Northern Rough-winged Swallow *	U	0	U	-
Cliff Swallow *	C	A	C	-
Barn Swallow *	U	C	U	

Chickadee and Titmouse				
Carolina Chickadee *	C	C	C	C
Tufted Titmouse *	C	C	C	C

Nuthatches				
Red-breasted Nuthatch	-	-	R	R
White-breasted Nuthatch *	U	U	U	U

Creepers				
Brown Creeper	0	-	0	C

Wrens				
House Wren	0	-	0	0
Winter Wren	0	-	0	U
Sedge Wren	U	-	U	U
Marsh Wren	C	-	C	0
Carolina Wren *	A	A	A	A
Bewick's Wren *	R	R	R	R

Kinglets				
Golden-crowned Kinglet	U	-	U	C
Ruby-crowned Kinglet	U	-	U	C

Thrushes				
Eastern Bluebird *	U	U	U	U
Veery	0	-	0	-
Swainson's Thrush	0	-	0	-
Hermit Thrush	U	-	U	C
Wood Thrush *	U	U	U	-
American Robin	U	-	U	C
Gray-cheeked Thrush	0	-	0	-

Common Name Mockingbirds and Thrashers	<i>SP</i>	<i>S</i>	<i>F</i>	<i>W</i>
Gray Catbird	0	-	0	0
Brown Thrasher *	U	U	U	U
Northern Mockingbird *	C	C	C	C

Starling				
European Starling *	0	0	0	0

Pipits				
American Pipit	U	-	U	U
Sprague's Pipit	-	-	-	R

Waxwing				
Cedar Waxwing	U	-	U	C

Wood Warblers				
Ovenbird	U	-	U	-
Worm-eating Warbler	U	-	0	-
Louisiana Waterthrush *	0	0	0	-
Northern Waterthrush	0	-	0	-
Golden-winged Warbler	0	-	0	-
Blue-winged Warbler	0	-	0	-
Black-and-white-Warbler *	0	0	0	-
Prothonotary Warbler *	U	C	U	-
Swainson's Warbler *	U	U	U	-
Tennessee Warbler	U	-	U	-
Orange-crowned Warbler	0	-	0	U
Nashville Warbler	0	-	U	-
Mourning Warbler	0	-	U	-
Kentucky Warbler *	U	U	U	-
Common Yellowthroat	C	C	C	U
Hooded Warbler *	U	U	U	-
American Redstart	U	-	U	-
Cape May Warbler	U	-	0	-
Cerulean Warbler	0	-	R	-
Northern Parula *	U	U	U	-
Magnolia Warbler	U	-	U	-
Bay-breasted Warbler	0	-	0	-
Blackburnian Warbler	0	-	0	-
Yellow Warbler	U	-	U	-
Chestnut-sided Warbler	0	-	0	-
Blackpoll Warbler	U	-	-	-
Black-throated Blue Warbler	0	-	0	-
Palm Warbler	U	-	U	R
Pine Warbler *	U	U	U	-
Yellow-rumped Warbler	U	-	U	C
Yellow-throated Warbler *	U	0	U	-
Prairie Warbler *	0	0	-	-

Common Name	<i>SP</i>	<i>S</i>	<i>F</i>	<i>W</i>
Black-throated Green Warbler	C	-	U	-
Canada Warbler	0	-	U	-
Wilson's Warbler	U	-	U	-

Tanagers				
Summer Tanager *	C	C	C	-
Scarlet Tanager	0	R	0	-

Grosbeaks				
Northern Cardinal *	C	C	C	C
Rose-breasted Grosbeak	0	-	0	-
Blue Grosbeak *	U	0	-	-
Indigo Bunting *	C	C	U	-
Painted Bunting *	U	C	-	-
Dickcissel *	C	C	C	-

Yellow-breasted Chat				
Yellow-breasted Chat	U	C	-	-

Blackbirds				
Bobolink	C	-	U	-
Eastern Meadowlark *	U	U	U	U
Orchard Oriole *	U	U	U	-
Baltimore Oriole *	0	0	0	-
Red-winged Blackbird *	C	C	C	A
Brown-headed Cowbird *	C	C	C	C
Rusty Blackbird	U	-	U	C
Brewer's Blackbird	U	-	U	U
Common Grackle *	U	U	U	C

Old World Sparrow				
House Sparrow *	0	0	0	0

Finches				
House Finch	0	0	0	0
Purple Finch	R		R	R
Pine Siskin	0	-	0	0
American Goldfinch	U	0	U	C

Gnatcatcher				
Blue-gray Gnatcatcher *	U	U	U	-

Longspur				
Lapland Longspur	-	-	-	0

Common Name Sparrows	SP	S	F	W
Eastern Towhee *	C	U	C	C
Chipping Sparrow	U	-	U	C
Field Sparrow	U	-	U	U
Vesper Sparrow	U	-	U	U
Savannah Sparrow	U	-	U	C
Grasshopper Sparrow *	O	O	O	O
Henslow's Sparrow	-	-	-	R
LeConte's Sparrow	-	-	-	U
Fox Sparrow	O	-	O	U
Song Sparrow	U	-	U	C
Lincoln's Sparrow	O	-	O	U
Swamp Sparrow	O	-	U	C
White-throated Sparrow	U	-	U	A
White-crowned Sparrow	O	-	O	U
Dark eyed Junco	O	-	O	U

Refuge Guidelines & Additional Information

- Refuges are open from 4 am until 1 ½ hours after sunset.
- Vehicles must not obstruct roads, gates or trails; and are restricted to designated roads.
- There is limited cell service.
- Hazards such as venomous snakes, stinging or biting insects, and poisonous plants are present.
- Be sure to bring plenty of drinking water, binoculars, sunscreen, and insect repellent.

ATTENTION:

Hunting is allowed on the Complex. Refer to the current Public Use Regulations for additional information and closure dates.

Keep your Refuges beautiful!



Theodore Roosevelt
National Wildlife Refuge Complex
Email: yazoo@fws.gov

Hillside NWR
For directions, visit the link below
www.fws.gov/refuge/hillside

Holt Collier NWR
For directions, visit the link below
www.fws.gov/refuge/holt_collier

Mathews NWR
For directions, visit the link below
www.fws.gov/refuge/mathews_brake

Morgan Brake NWR
1562 Providence Road
Cruger, MS 38924
662/235-4989
www.fws.gov/refuge/morgan_brake

Panther Swamp NWR
12595 MS Highway 148
Yazoo City, MS 39199
662/836-3004
www.fws.gov/refuge/panther_swamp

Theodore Roosevelt NWR Visitor Center
5068 Hwy 61 North
Rolling Fork, MS 39159
662/527-1997
www.fws.gov/refuge/theodore_roosevelt

Yazoo NWR
595 Yazoo Refuge Road
Hollandale, MS 38748
662/839-2638
www.fws.gov/refuge/yazoo

December 2020



Credit, Renee Tressler