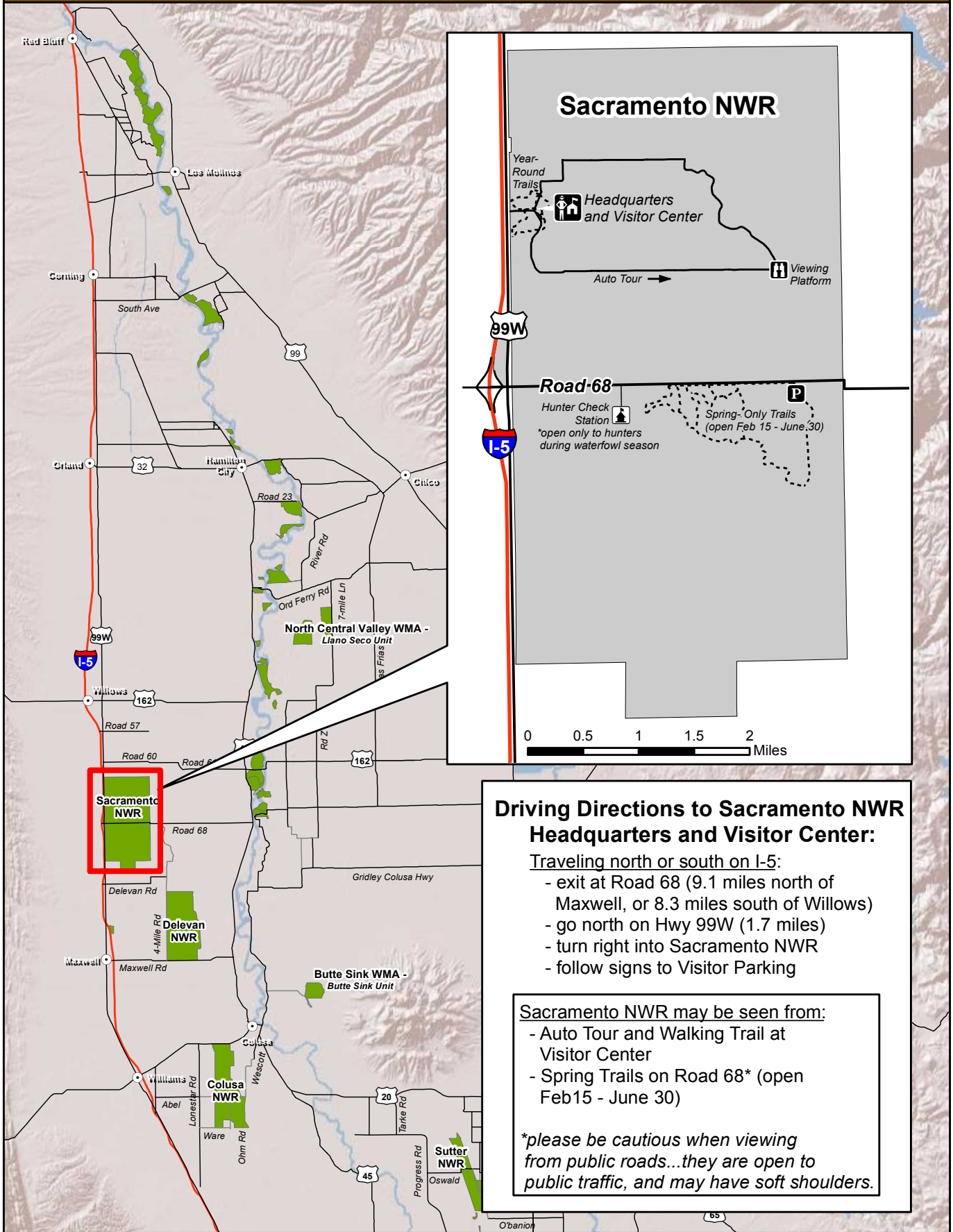


# VISITOR CENTER DIRECTIONS - Sacramento National Wildlife Refuge



## Driving Directions to Sacramento NWR Headquarters and Visitor Center:

- Traveling north or south on I-5:
- exit at Road 68 (9.1 miles north of Maxwell, or 8.3 miles south of Willows)
  - go north on Hwy 99W (1.7 miles)
  - turn right into Sacramento NWR
  - follow signs to Visitor Parking

### Sacramento NWR may be seen from:

- Auto Tour and Walking Trail at Visitor Center
- Spring Trails on Road 68\* (open Feb 15 - June 30)

*\*please be cautious when viewing from public roads...they are open to public traffic, and may have soft shoulders.*

