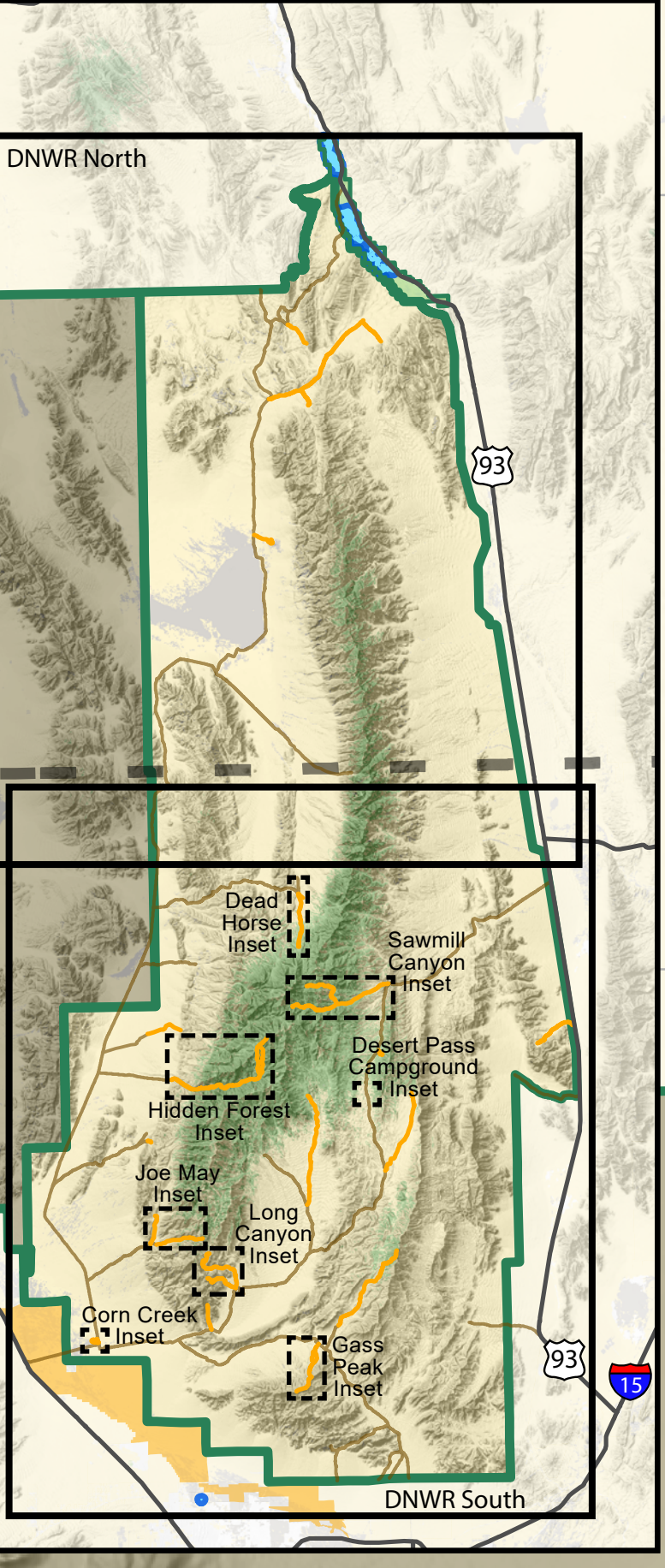


USGS 7.5 Minute Series Quad Reference

Desert Hills NE	Lower Pahranagat Lake NW	Upper Pahranagat Lake	South of Delamar Lake
Desert Hills SE	Lower Pahranagat Lake SW	Lower Pahranagat Lake SE	Pahranagat Wash
Bump Basin	Mule Deer Ridge NW	Mule Deer Ridge NE	Wildcat Wash NW
Dead Horse Ridge	Mule Deer Ridge	Mule Deer Ridge SE	Wildcat Wash SW
Black Hills NW	White Sage Flat	Hayford Peak	Mormon Well
Black Hills SW	Black Hills	Sheep Peak	Hayford Peak SE
Corn Creek Springs NW	Corn Creek Springs	Gass Peak	Gass Peak NE
Tule Springs Lake	Gass Peak SW	Valley	Apex

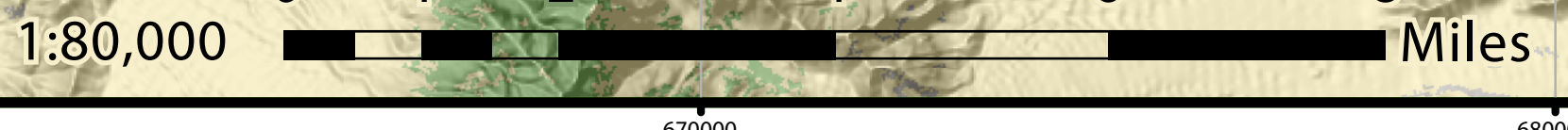


- Peak
 - Spring
 - Mileage/Junction Marker (Road/Trails/Highway)
 - Mileage Between Markers (Road/Trail)
 - Handicap Accessible Site
 - Information
 - Available Water
 - Campground/Campsite
 - Wildlife Viewing
 - Picnic Area/Picnic Site
 - Restroom
 - Hiking Route
 - Parking/Pull-off Area
 - Visitor Center
 - Highway/State Route
 - Paved Road
 - Unpaved Road - High Clearance/4WD Recommended
 - County Boundary
 - Hiking Route
 - National Wildlife Refuge Boundary
 - Lake/Reservoir
 - Wetland
 - Forested Land
- Map projection: NAD 1983, UTM Zone 11N
 Note: Insets have 100 ft. contour interval

(CLOSED TO PUBLIC)

(CLOSED TO PUBLIC)

(CLOSED TO PUBLIC)



Delamar Mountains Wilderness

Nevada Test and Training Range/ Desert National Wildlife Refuge

LINCOLN CLARK

Sheep Basin

Evergreen Flat

Coyote Springs Valley

Pahranagat Range

Desert Valley

Desert Dry Lake

Sheep Range

Delamar Mountains Wilderness

U.S. Fish and Wildlife Service

Bureau of Land Management
U.S. Fish and Wildlife Service

U.S. Fish and Wildlife Service
S. Air Force

U.S. Fish and Wildlife Service

55 miles to Las Vegas



U.S. Fish and Wildlife Service

55 miles to Las Vegas