

Iroquois National Wildlife Refuge

Cross Country Skiing/Snowshoeing

Welcome to Iroquois National Wildlife Refuge. The United States Fish and Wildlife Service established the refuge in 1958 primarily for nesting, resting, staging, and feeding waterfowl. The refuge offers several opportunities for winter recreation.

Skiing and snowshoeing are popular seasonal activities that provide visitors with opportunities for recreation and wildlife observation.

Access

The Mohawk Ski Trail affords skiers the chance to enjoy a variety of habitats characteristic of Iroquois National Wildlife Refuge. It is a 7.5 mile (12.1km) loop of Mohawk Pool; rest benches and an observation deck are located along the route. Mohawk Ski Trail closes March 1st to minimize disturbances to nesting and resting wildlife.

Feeder Road, Onondaga, and Kanyoo Trails, are open to skiing and snowshoeing when snow conditions permit.

The trails are self-guided with signs indicating appropriate routes of travel. They are not groomed regularly by Refuge staff and obstructions to the trails are to be expected. In addition, please be aware that some of these trails may serve multiple uses as roads or walkways.

The Refuge is open from sunrise to sunset.

Vehicles

Vehicles are only allowed on established roads marked open for vehicular travel. Vehicles must be parked off the lane of travel and clear of gates. ATVs and snowmobiles are not allowed.

Pets

Please keep your pet on a leash no longer than 10 feet at all times.

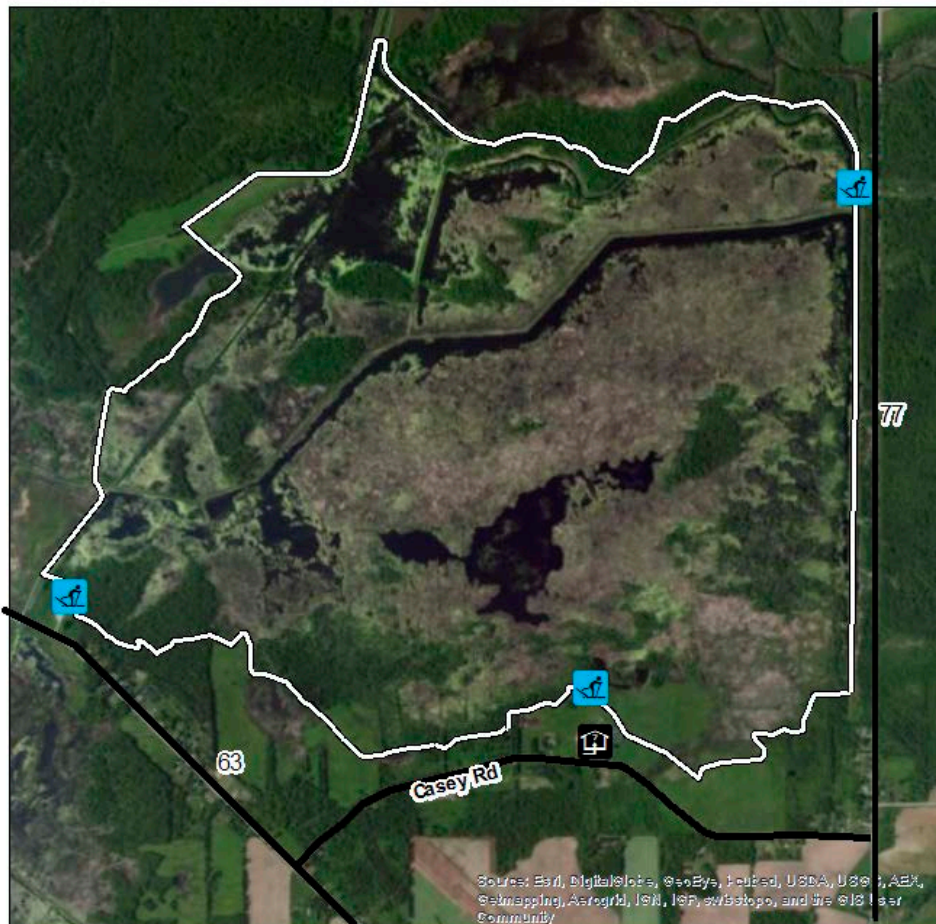
Iroquois National Wildlife Refuge
1101 Casey Road
Basom, NY 14013-9730
585/948 5445

www.fws.gov/refuge/iroquois
www.fws.gov/refuges/hunting

Federal Relay Service
for the deaf and hard-of-hearing
1 800/877 8339

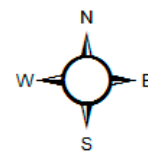
U.S. Fish & Wildlife Service
1 800/344 WILD
<http://www.fws.gov>

July 2022







Source: Esri, DigitalGlobe, GeoEye, Earthstar, USDA, U.S.G.S., Aero, Screenshot, Aerogrid, IGN, IGP, swisstopo, and the GIS User Community

Iroquois National Wildlife Refuge



Cross Country Ski Trail

Legend

-  Trail Entrance
-  Visitors' Center
-  Ski Trail
-  Roads