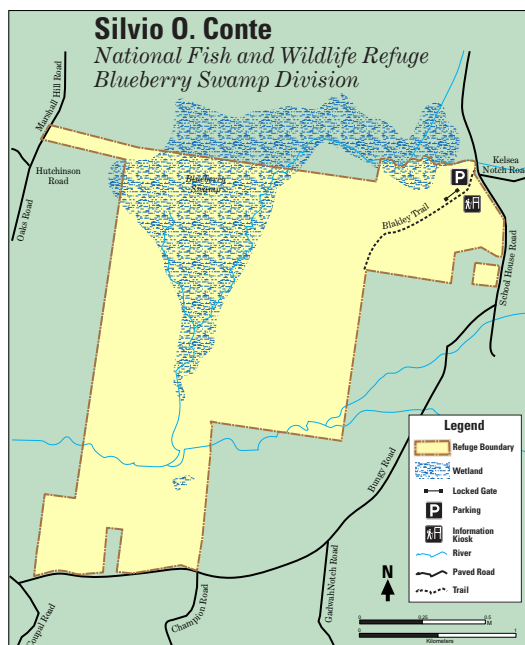


The Blueberry Swamp Division lies in northwestern Coos County in the town of Columbia, New Hampshire, about 5 miles southeast of the town of Colebrook, New Hampshire. The division is situated within the Simms Stream watershed, which drains into the Connecticut River. Habitat is primarily mixed-wood forests and lowland spruce-fir, and contains a large wetland complex, known as Blueberry Swamp, consisting of shrub swamp, freshwater marsh, and cedar swamp communities. Abandoned pastures and hayfields are also present providing excellent habitat for American woodcock. Blueberry Swamp is home to a variety of neotropical warblers, thrushes, vireos and other forest dependent birds.

Come and enjoy the wonders of Blueberry Swamp. The division is open to the public for hunting, fishing, wildlife observation, photography, environmental education, and interpretation. The Blueberry Swamp Division is open to the public from 30 minutes before sunrise to 30 minutes after sunset.

#### Directions:

Take I91 North to exit 21. Then follow Route 2 East to Lancaster, NH. At the roundabout take US 3 North towards Colebrook, NH. In downtown Colebrook, take a right onto NH 26E. Travel approximately, 5 miles, and take a right onto Bungy Road. Follow Bungy Road for about 5 miles, division boundary and kiosk will be on your right.



U.S. Fish & Wildlife Service

# Silvio O. Conte

## National Fish and Wildlife Refuge

### Blueberry Swamp Division



Silvio O. Conte National Fish and Wildlife Refuge  
Blueberry Swamp Division  
5396 Rte. 105  
Brunswick, Vermont 05905  
802-962-5240  
[https://www.fws.gov/refuge/Silvio\\_O\\_Conte/](https://www.fws.gov/refuge/Silvio_O_Conte/)

Federal Relay Service  
for the deaf and hard of hearing  
1 800/877 8339

U.S. Fish & Wildlife Service  
1 800/344 WILD  
<http://www.fws.gov>

May 2020



Yellow warbler  
David Small

BY CHANCE  
JALL