



2026 Bellrose WPA Rotation				
30 Pairs, 2 Bull				
Cell	Days	Date In	Date Out	acres
8S	22	15-May	6-Jun	44
5A	18	6-Jun	24-Jun	38
2B	18	24-Jun	12-Jul	48
1A/1B	15	12-Jul	27-Jul	30
2A	18	27-Jul	14-Aug	38
Total Days	91			198



U.S. Fish & Wildlife Service

Davis Waterfowl Production Area
SHERIDAN COUNTY

Audubon Wetland Management District



- Perm. Barbed Wire
- Temp. Electric
- WPA Boundary

Produced by Audubon Wetland Management District
Produced: 2/11/2025
Basemap: NAIP Imagery

The USFWS makes no warranty for use of this map and cannot be held liable for actions or decisions based on map content. This map is to be used to determine grazing on WPAs in conjunction with a Special Use Permit. Map image is the intellectual property of Esri and is used herein under license. Copyright © 2019 Esri and its licensors. All rights reserved.



Datum: NAD 83

2026 Davis WPA				
Grazing 30 Pairs, 2 Bull. 72 AU				
Cell	Days	Date In	Date Out	Acres
3,4	15	15-May	30-May	52
5,6,7	20	30-May	19-Jun	68
Total Days	35			

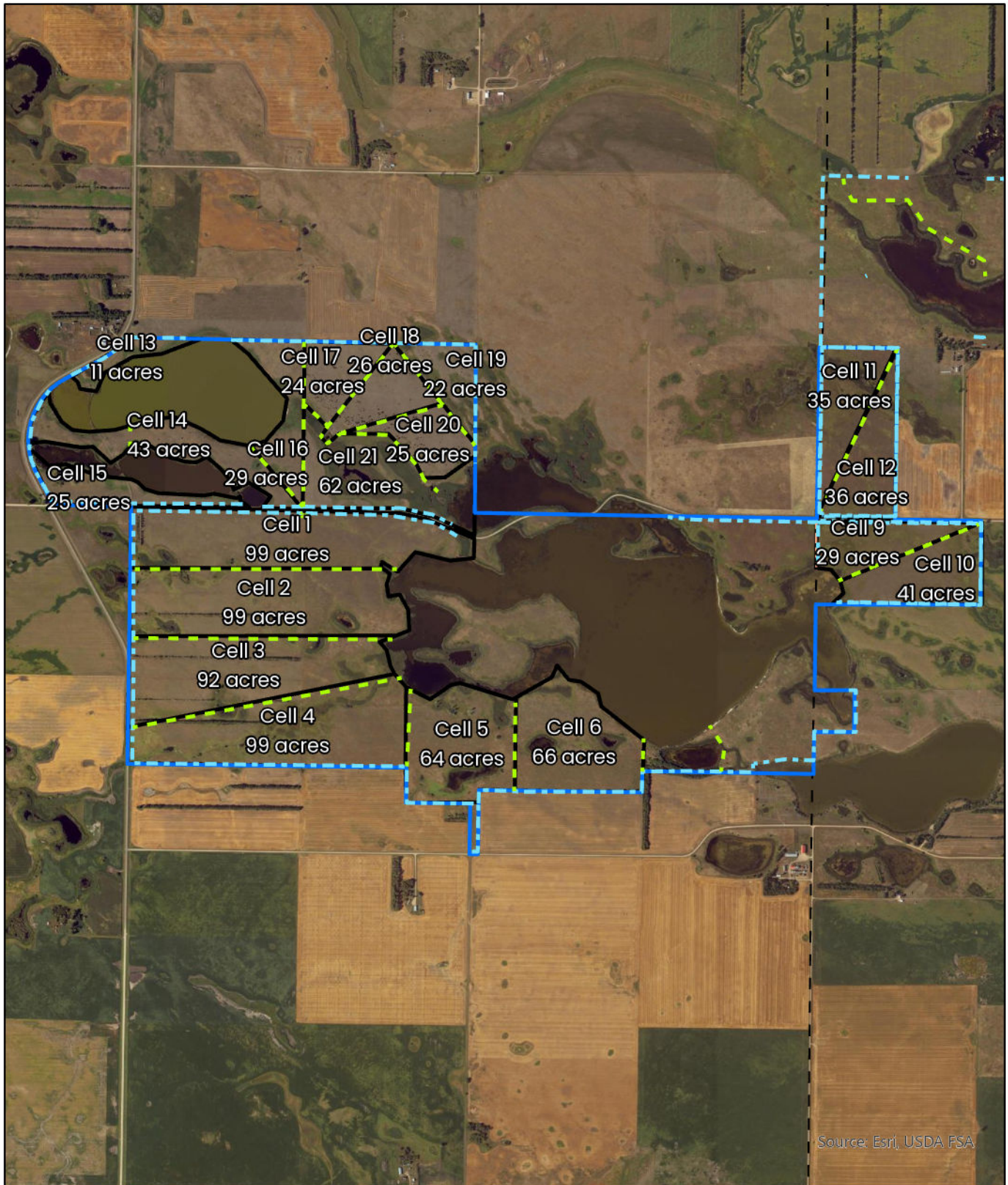


U.S. Fish & Wildlife Service

Johnson Lake Helm Hillstrom Waterfowl Production Area

SHERIDAN COUNTY

Audubon Wetland Management District



— Perm. Barbed Wire

— Temp. Electric

— WPA Boundary

Produced by Audubon Wetland Management District
Produced: 2/11/2025
Basemap: NAIP Imagery

The USFWS makes no warranty for use of this map and cannot be held liable for actions or decisions based on map content.
This map is to be used to determine grazing on WPAs in conjunction with a Special Use Permit.
Map image is the intellectual property of Esri and is used herein under license. Copyright © 2019 Esri and its licensors. All rights reserved.

0 0.25 0.5 1 Miles



Datum: NAD 83

Johnson Lake/Helm/Hillstrom

2026 WPA Grazing Rotation			
60 Pairs,3 Bull			
Cell	Days	Date In	Date Out
15/14	13	10-May	23-May
16/21	18	23-May	10-Jun
17/18/19/20	19	10-Jun	29-Jun
21	12	29-Jun	11-Jul
Total Days		62	

2027 WPA Grazing Rotation			
60 Pairs,3 Bull			
Cell	Days	Date In	Date Out
1	19	10-May	29-May
2	19	29-May	17-Jun
3	18	17-Jun	5-Jul
4	20	5-Jul	25-Jul
Total Days		76	

2028 WPA Grazing Rotation			
60 Pairs,3 Bull			
Cell	Days	Date In	Date Out
5	13	10-May	23-May
6	13	23-May	5-Jun
7	15	5-Jun	20-Jun
4	20	20-Jun	10-Jul
Total Days		61	

2029 WPA Grazing Rotation			
60 Pairs,3 Bull			
Cell	Days	Date In	Date Out
8	11	20-May	31-May
9/10	14	31-May	14-Jun
11/12	15	14-Jun	29-Jun
Total Days		40	



U.S. Fish & Wildlife Service

La sher Wa terfowl Production Area

SHERIDAN COUNTY

Audubon Wetland Management District



Source: Esri, USDA FSA, To be provided by the Refuge

— Perm. Barbed Wire

— Temp. Electric

— WPA Boundary

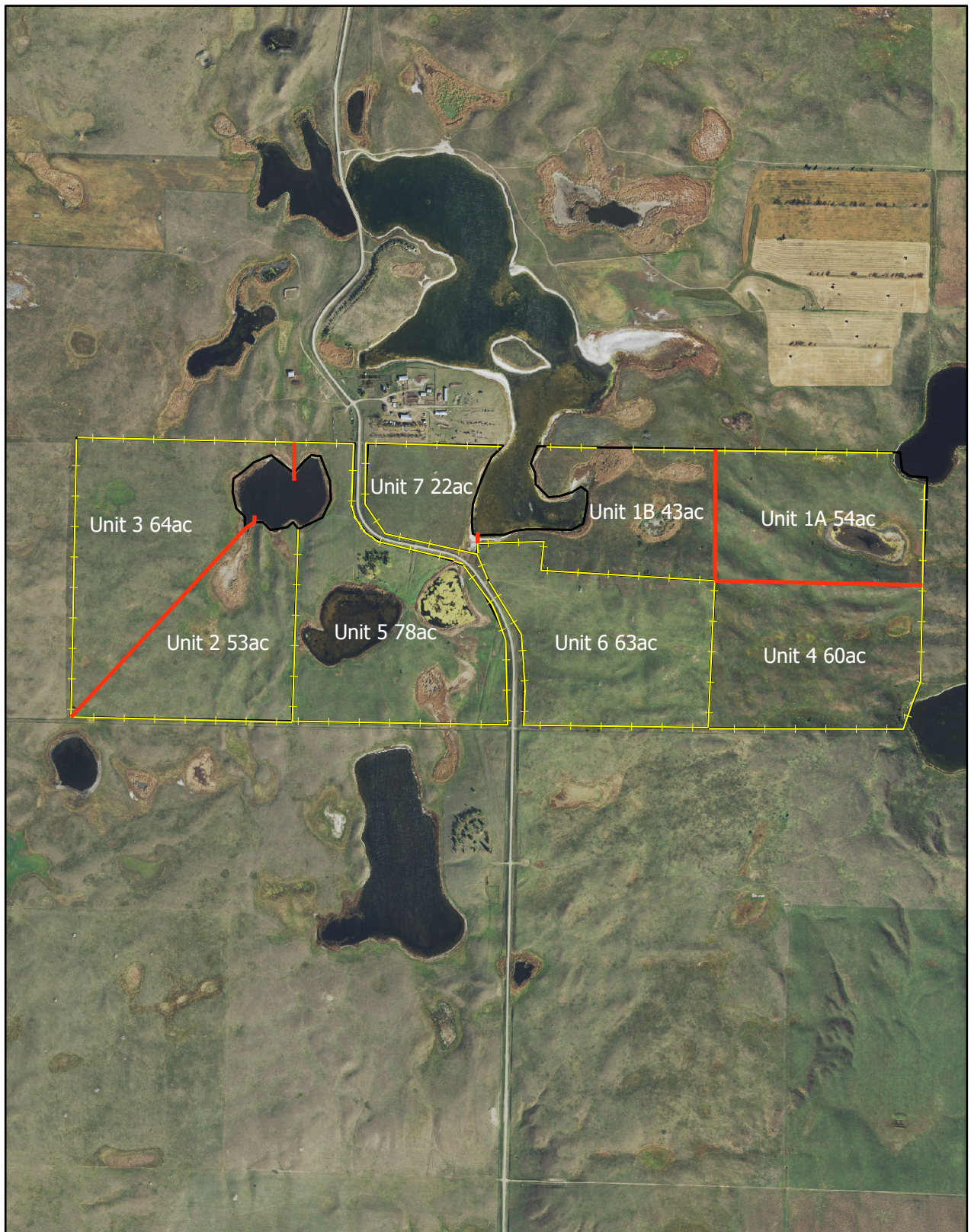
Produced by Audubon Wetland Management District
Produced: 2/11/2025
Basemap: NAIP Imagery

The USFWS makes no warranty for use of this map and cannot be held liable for actions or decisions based on map content. This map is to be used to determine grazing on WPAs in conjunction with a Special Use Permit. Map image is the intellectual property of Esri and is used herein under license. Copyright © 2019 Esri and its licensors. All rights reserved.

0 0.05 0.1 0.19 Miles

Datum: NAD 83

2026 Lasher Grazing Rotation				
50 Pairs, 2 Bull				
Cell	Days	Date In	Date Out	Acres
1	25	10-May	4-Jun	59.2
2	25	4-Jun	29-Jun	58.2
Total Days		50		117.4



Produced by Audubon Wetland Management District
Produced: 1/11/2023;
Basemap: 2021 McLean County NAIP

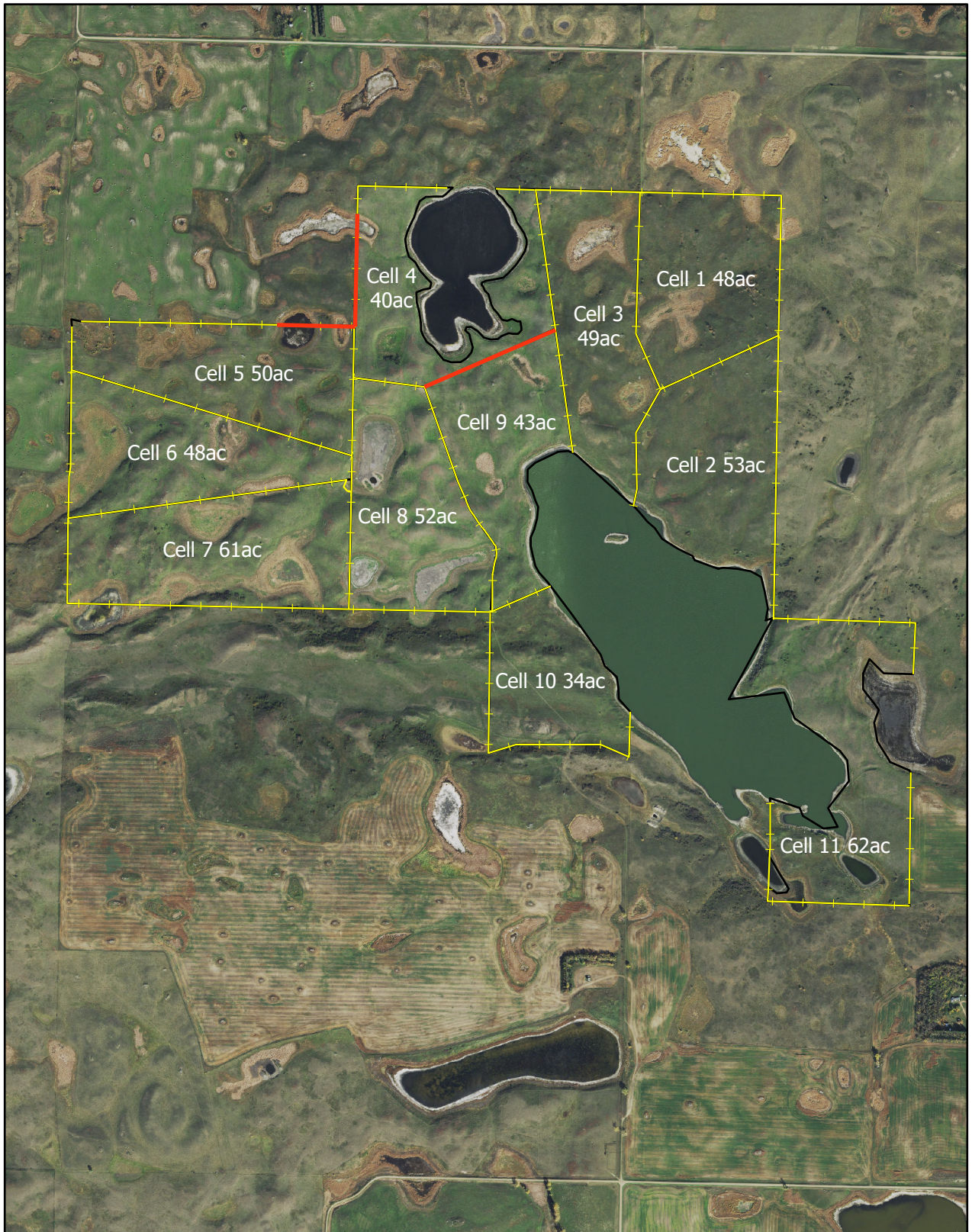
The USFWS makes no warranty for use of this map and cannot be held liable for actions or decisions based on map content.

— Perm. Barbed Wire
— Temp. Electric

0 0.13 0.25 0.5 Miles

Datum: NAD 83

2026 Oster WPA Grazing Rotation 63 AU (50 pair/2 bull)				
Cell	Days	Date In	Date Out	Acres
1A	20	15-May	4-Jun	54.5
1B	15	4-Jun	19-Jun	43.1
6	22	19-Jun	11-Jul	63.4
7	8	11-Jul	19-Jul	21.8
65				182.8



Produced by Audubon Wetland Management District
Produced: 1/11/2023;
Basemap: 2021 McLean County NAIP

The USFWS makes no warranty for use of this map and cannot be held liable for actions or decisions based on map content.

— Perm. Barbed Wire
— Temp. Electric

0 0.13 0.25 0.5 Miles

Datum: NAD 83

2026 Tkach WPA Grazing Rotation 57 AU (45 pair/2 bull)				
Cell	Days	Date In	Date Out	Acres
10	20	10-May	30-May	34
8	30	30-May	29-Jun	52
7	30	29-Jun	29-Jul	61
6	25	29-Jul	23-Aug	48
5	25	23-Aug	17-Sep	50
4	20	17-Sep	7-Oct	40
150		285		

2027 Tkach WPA Grazing Rotation 57 AU (45 pair/2 bull)				
Cell	Days	Date In	Date Out	Acres
3	20	30-May	19-Jun	49
4	15	19-Jun	4-Jul	40
9	25	4-Jul	29-Jul	53
8	25	29-Jul	23-Aug	52
10	15	23-Aug	7-Sep	34
2	25	7-Sep	2-Oct	53
125		281		

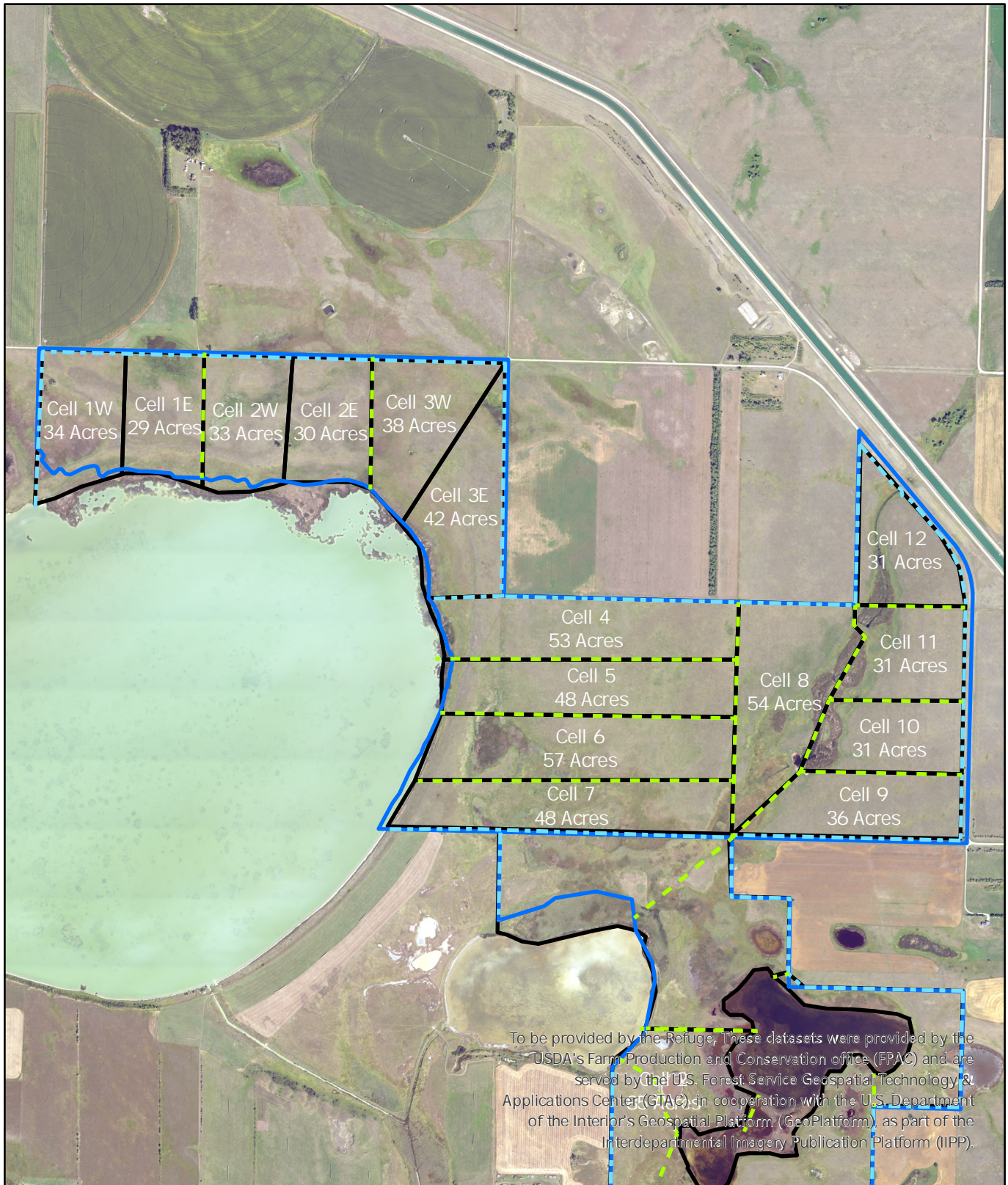
2028 Tkach WPA Grazing Rotation 57 AU (45 pair/2 bull)				
Cell	Days	Date In	Date Out	Acres
1	25	30-May	24-Jun	48
3	25	24-Jun	19-Jul	49
4	15	19-Jul	3-Aug	40
5	20	3-Aug	23-Aug	50
6	20	23-Aug	12-Sep	48
7	25	12-Sep	7-Oct	61
130		296		



U.S. Fish & Wildlife Service

Turtle Lake III Waterfowl Production Area
MCLEAN COUNTY

Audubon Wetland Management District



- Perm. Barbed Wire
- Temp. Electric
- WPA Boundary

Produced by Audubon Wetland Management District
Produced: 2/11/2025
Basemap: NAIP Imagery

The USFWS makes no warranty for use of this map and cannot be held liable for actions or decisions based on map content. This map is to be used to determine grazing on WPAs in conjunction with a Special Use Permit. Map image is the intellectual property of Esri and is used herein under license. Copyright © 2019 Esri and its licensors. All rights reserved.

0 0.17 0.35 0.7 Miles

Datum: NAD 83

2026 Turtle Lake III WPA Grazing Rotation 51 AU (40 pair/2bull)					
Cell	Days	Date In	Date Out	acres	
12	15	20-May	4-Jun	31	
11	15	4-Jun	19-Jun	31	
10	15	19-Jun	4-Jul	31	
9	15	4-Jul	19-Jul	36	
8	25	19-Jul	13-Aug	54	
				<u>85</u>	<u>183</u>

2027 Turtle Lake III WPA Grazing Rotation 51 AU (40 pair/2bull)					
Cell	Days	Date In	Date Out	acres	
4	24	20-May	13-Jun	53	
5	22	13-Jun	5-Jul	48	
6	25	5-Jul	30-Jul	57	
7	21	30-Jul	20-Aug	48	
				<u>92</u>	<u>206</u>

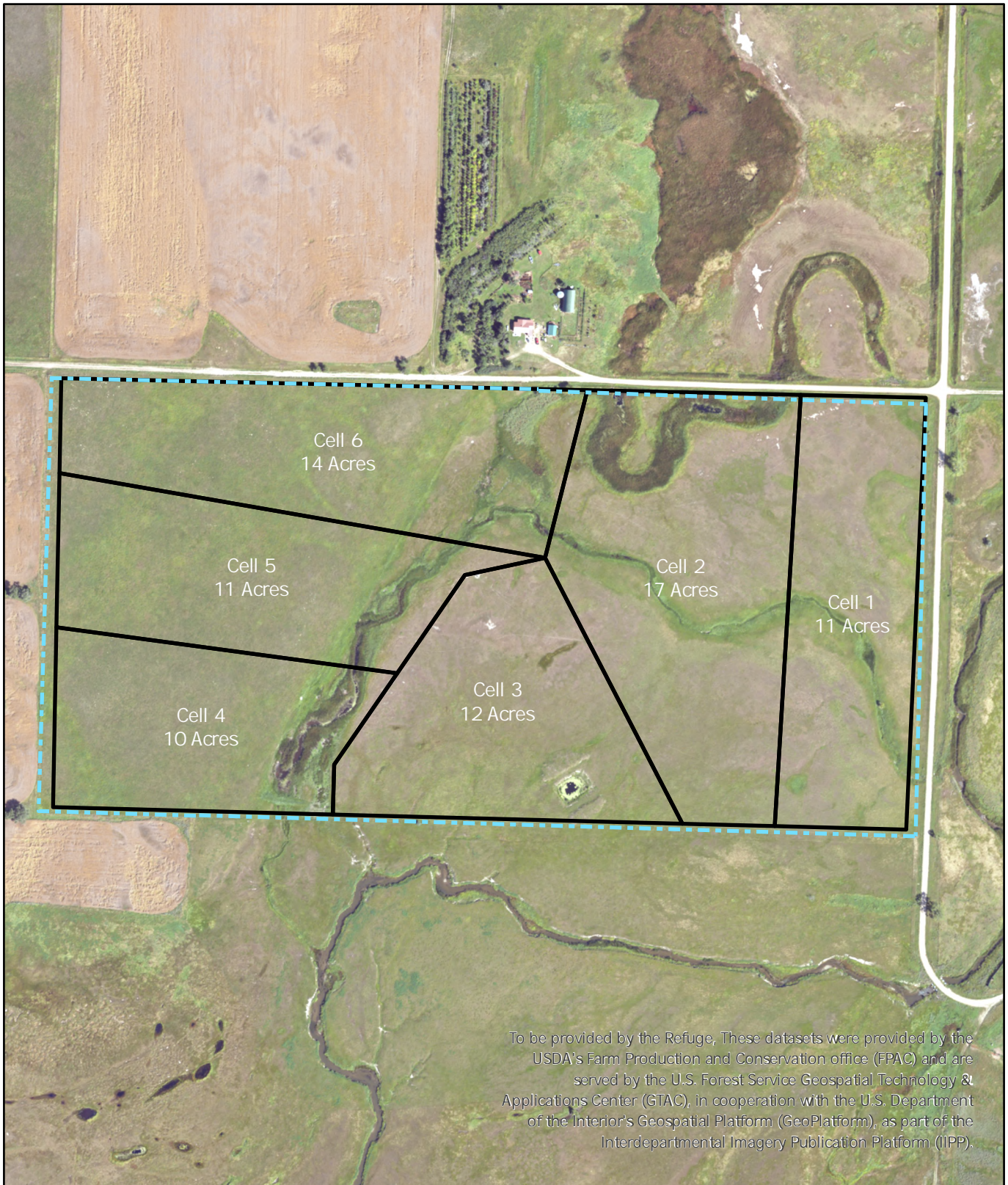
2028 Turtle Lake III WPA Grazing Rotation 51 AU (40 pair/2bull)					
Cell	Days	Date In	Date Out	acres	
1W	14	1-Jun	15-Jun	34	
1E	14	15-Jun	29-Jun	29	
2W	14	29-Jun	13-Jul	33	
2E	14	13-Jul	27-Jul	30	
3W	17	27-Jul	13-Aug	38	
3E	17	13-Aug	30-Aug	42	
				<u>90</u>	<u>206</u>



U.S. Fish & Wildlife Service

West Lost Lake Waterfowl Production Area
MCLEAN COUNTY

Audubon Wetland Management District



To be provided by the Refuge, These datasets were provided by the USDA's Farm Production and Conservation office (FPAC) and are served by the U.S. Forest Service Geospatial Technology & Applications Center (GTAC), in cooperation with the U.S. Department of the Interior's Geospatial Platform (GeoPlatform), as part of the Interdepartmental Imagery Publication Platform (IIPP).

— Perm. Barbed Wire

— Temp. Electric

— WPA Boundary

Produced by Audubon Wetland Management District
Produced: 2/11/2025
Basemap: NAIP Imagery

The USFWS makes no warranty for use of this map and cannot be held liable for actions or decisions based on map content. This map is to be used to determine grazing on WPAs in conjunction with a Special Use Permit. Map image is the intellectual property of Esri and is used herein under license. Copyright © 2019 Esri and its licensors. All rights reserved.

0 0.05 0.1 0.19 Miles

Datum: NAD 83

2026 West Lost Lake WPA Grazing Rotation -50 Pairs, 2 Bulls 60 AU				
Cell	Days	Date In	Date Out	Acres
6	5	6/1/2026	6/6/2026	9.9
5	4	6/6/2026	6/10/2026	11.5
4	4	6/10/2026	6/14/2026	9.9
3	4	6/14/2026	6/18/2026	11.5
2	5	6/18/2026	6/23/2026	16.7
1	4	6/23/2026	6/27/2026	11.1
26				70.6



U.S. Fish & Wildlife Service

Lake Ilo NWR (East) Grazing
Units 11 & 19

T145N - R94W
Dunn County

Audubon Wetland Management District



Produced by Audubon Wetland Management District
Produced: 2/4/2026
Basemap: 2021 Dunn County NAIP

 Lake Ilo Management Units

0  1/4 Miles

The USFWS makes no warranty for use of this map and cannot be held liable for actions or decisions based on map content.
This map template is intended as a general guide for the creation of U.S. Fish and Wildlife maps at a small scale.
#This section of the Map Bibliography should be used to describe the purpose of the map, the data used to create it, and any special procedures used to process the data.
Map image is the intellectual property of Esri and is used herein under license.
Copyright © 2019 Esri and its licensors. All rights reserved.


Datum: NAD 83

2026 Lake Ilo NWR (East)				
Grazing 60 AU				
Cell	Days	Date In	Date Out	Acres
19	6	20-May	26-May	19
11	42	26-May	7-Jul	121
Total Days		48		

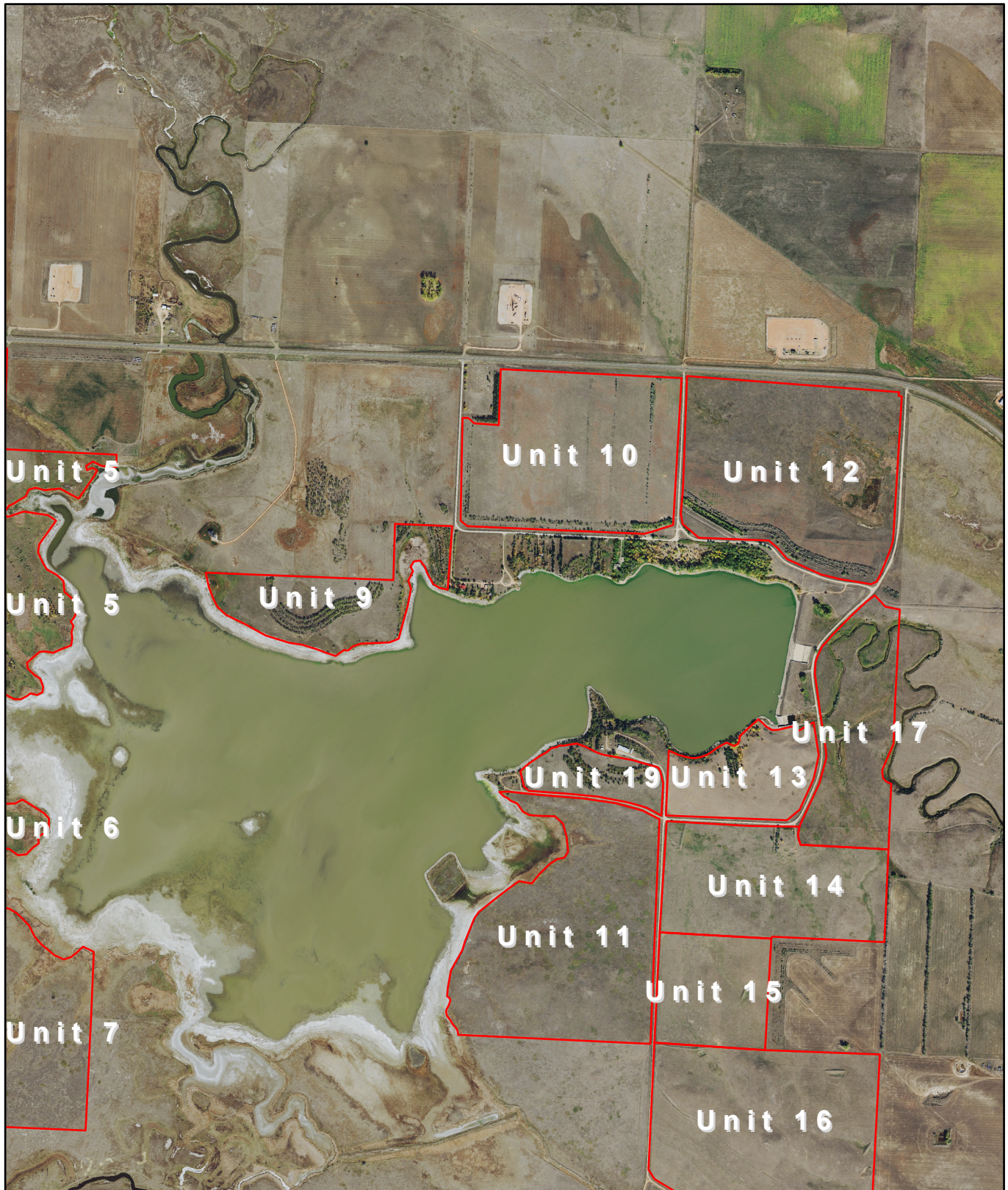


U.S. Fish & Wildlife Service

Lake Ilo NWR (Northeast) Grazing
Units 9 & 12

T145N - R94W
Dunn County

Audubon Wetland Management District



Produced by Audubon Wetland Management District
Produced: 2/4/2026
Basemap: 2021 Dunn County NAIP

 Lake Ilo Management Units

0 0.6 Miles

The USFWS makes no warranty for use of this map and cannot be held liable for actions or decisions based on map content.
This map template is intended as a general guide for the creation of U.S. Fish and Wildlife maps at a small scale.
#This section of the Map Bibliography should be used to describe the purpose of the map, the data used to create it, and any special procedures used to process the data.
Map image is the intellectual property of Esri and is used herein under license.
Copyright © 2019 Esri and its licensors. All rights reserved.


Datum: NAD 83

2026 Lake Ilo NWR (Northeast)				
Grazing 72 AU				
Cell	Days	Date In	Date Out	Acres
9	15	20-May	4-Jun	47
12	20	19-Jun	29-Jun	116
Total Days		35		

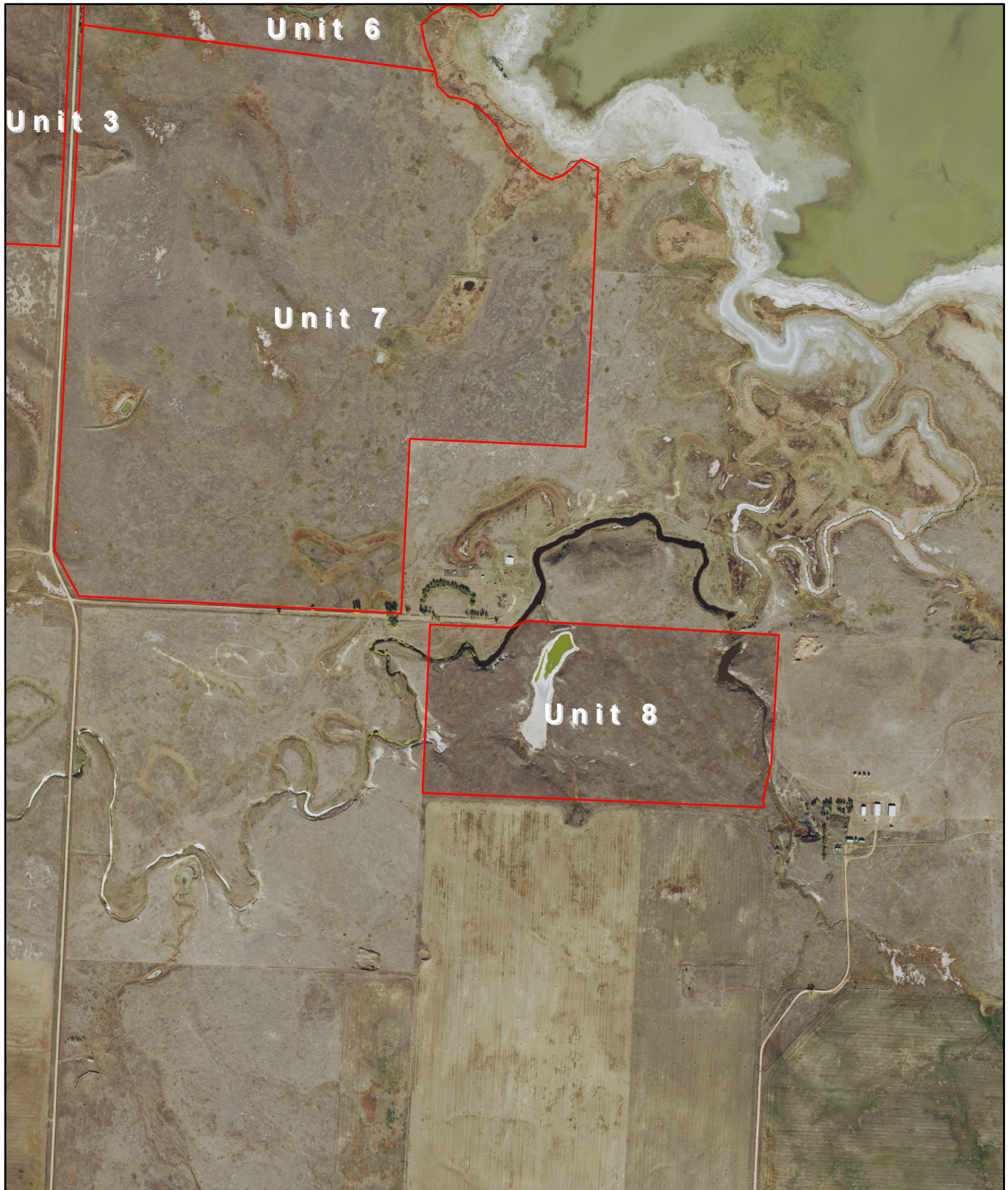


U.S. Fish & Wildlife Service

Lake Ilo NWR (South) Grazing
Unit 8

T144N - R95W
Dunn County

Audubon Wetland Management District



Produced by Audubon Wetland Management District
Produced: 2/4/2026
Basemap: 2021 Dunn County NAIP

 Lake Ilo Management Units

0 0.4 Miles

The USFWS makes no warranty for use of this map and cannot be held liable for actions or decisions based on map content.
This map template is intended as a general guide for the creation of U.S. Fish and Wildlife maps at a small scale.
#This section of the Map Bibliography should be used to describe the purpose of the map, the data used to create it, and any special procedures used to process the data.
Map image is the intellectual property of Esri and is used herein under license.
Copyright © 2019 Esri and its licensors. All rights reserved.



Datum: NAD 83

2026 Lake Ilo NWR (South)				
Grazing 72 AU				
Cell	Days	Date In	Date Out	Acres
8	20	15-May	4-Jun	77
Total Days		20		

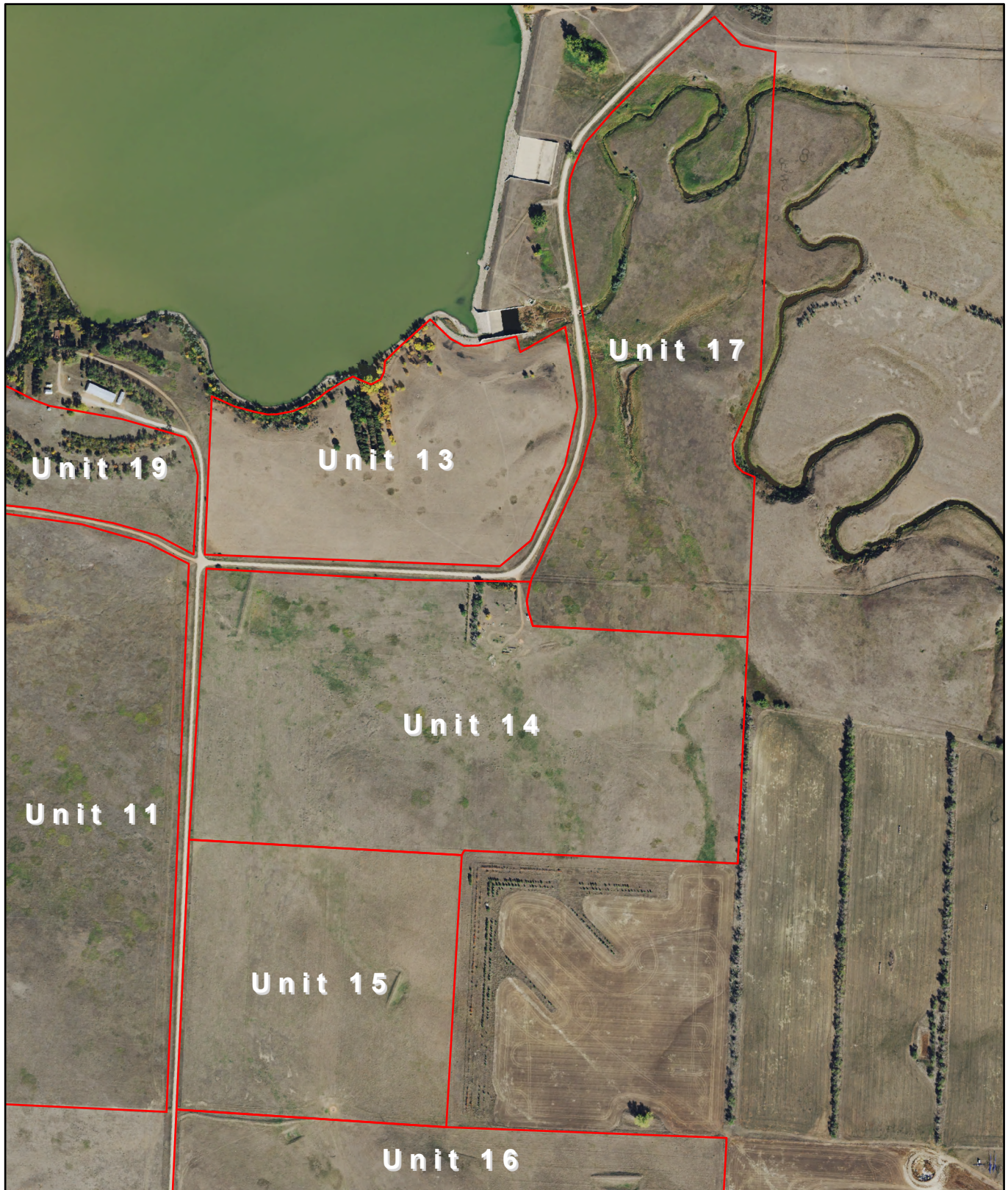


U.S. Fish & Wildlife Service

Lake Ilo NWR (Southeast) Grazing
Units 14, 15, & 17

T145N - R94W
Dunn County

Audubon Wetland Management District



Produced by Audubon Wetland Management District
Produced: 2/4/2026
Basemap: 2021 Dunn County NAIP

 Lake Ilo Management Units

0  1/4 Miles

The USFWS makes no warranty for use of this map and cannot be held liable for actions or decisions based on map content.
This map template is intended as a general guide for the creation of U.S. Fish and Wildlife maps at a small scale.
#This section of the Map Bibliography should be used to describe the purpose of the map, the data used to create it, and any special procedures used to process the data.
Map image is the intellectual property of Esri and is used herein under license.
Copyright © 2019 Esri and its licensors. All rights reserved.


Datum: NAD 83

2026 Lake Ilo NWR (Southeast)				
Grazing 66 AU				
Cell	Days	Date In	Date Out	Acres
14	24	20-May	13-Jun	73
15	12	13-Jun	25-Jun	39
17	15	25-Jun	10-Jul	56
Total Days	51			

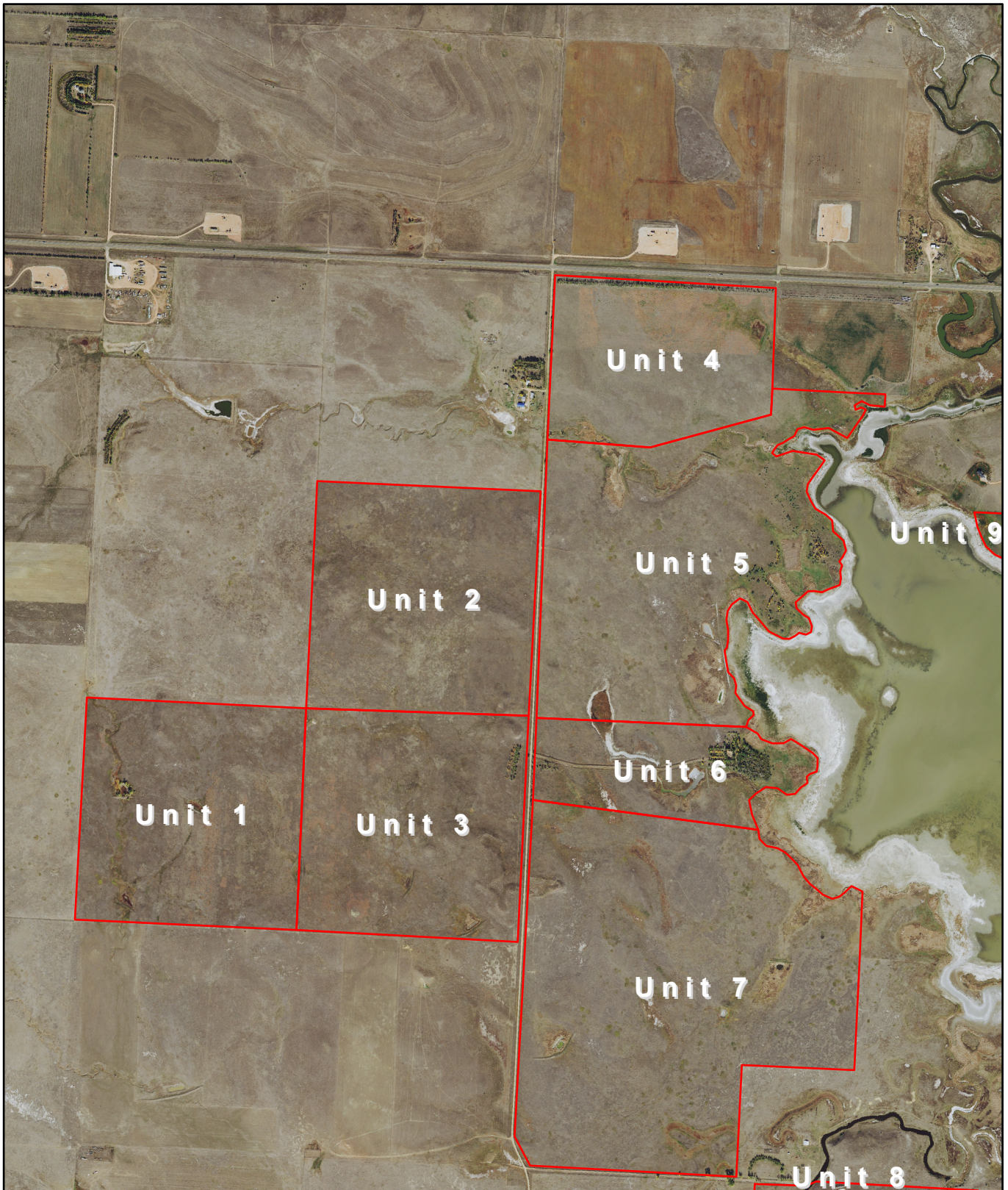


U.S. Fish & Wildlife Service

Lake Ilo NWR (West) Grazing
Units 1 & 2

T145N - R94W
Dunn County

Audubon Wetland Management District



Produced by Audubon Wetland Management District
Produced: 2/4/2026
Basemap: 2021 Dunn County NAIP

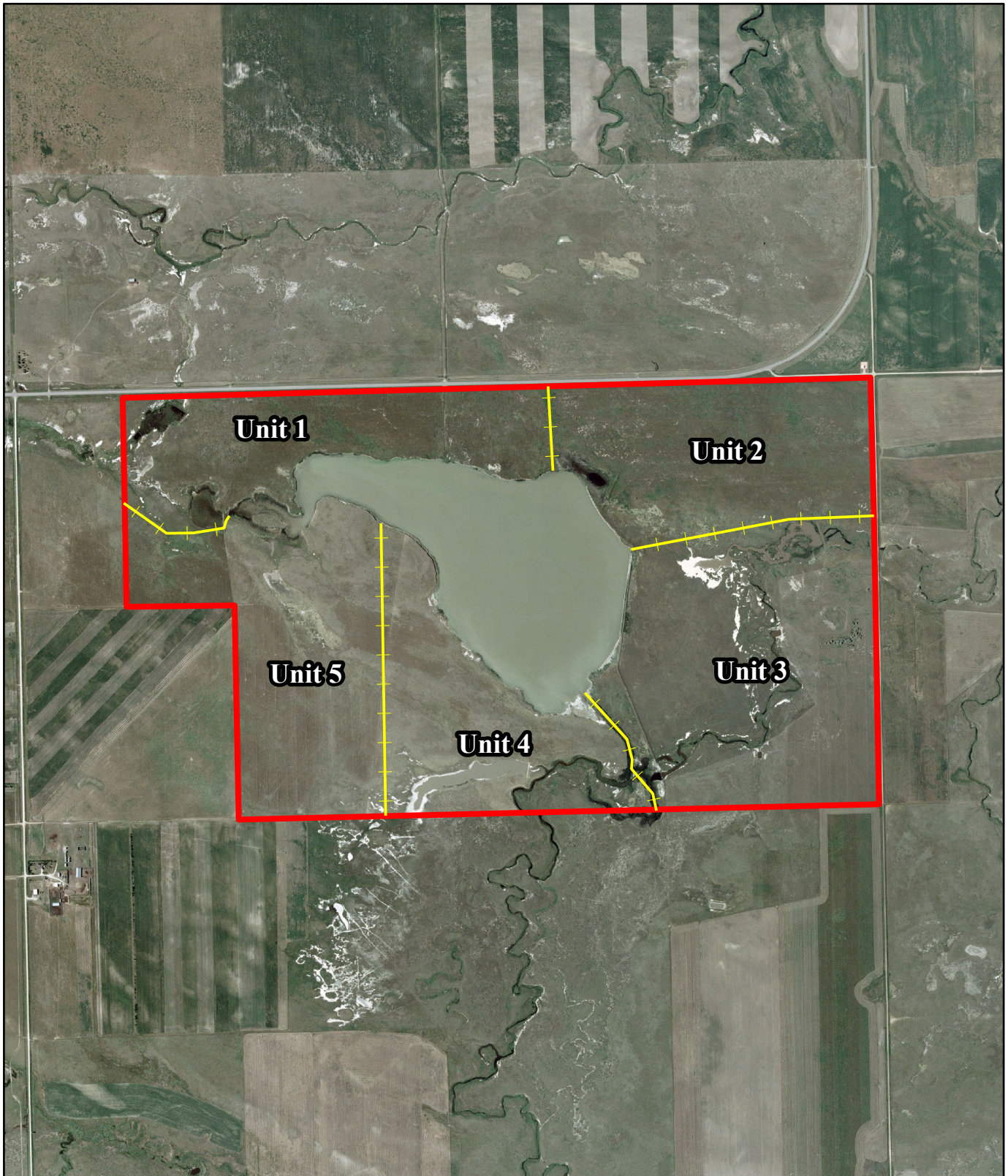
 Lake Ilo Management Units

0 0.6 Miles

The USFWS makes no warranty for use of this map and cannot be held liable for actions or decisions based on map content.
This map template is intended as a general guide for the creation of U.S. Fish and Wildlife maps at a small scale.
#This section of the Map Bibliography should be used to describe the purpose of the map, the data used to create it, and any special procedures used to process the data.
Map image is the intellectual property of Esri and is used herein under license.
Copyright © 2019 Esri and its licensors. All rights reserved.


Datum: NAD 83

2026 Lake Ilo NWR (West)				
Grazing 132 AU				
Cell	Days	Date In	Date Out	Acres
1	21	20-May	10-Jun	154
2	27	10-Jun	1-Jul	160
Total Days		48		



2026 White Lake NWR				
Grazing 210 AU				
Cell	Days	Date In	Date Out	Acres
2	16	15-May	31-May	155
1	12	31-May	12-Jun	136
Total Days		28		

2027 White Lake NWR				
Grazing 210 AU				
Cell	Days	Date In	Date Out	Acres
5	18	15-May	2-Jun	186
4	13	2-Jun	15-Jun	138
Total Days		31		

2028 White Lake NWR				
Grazing 210 AU				
Cell	Days	Date In	Date Out	Acres
3	26	15-May	10-Jun	247
2	14	10-Jun	24-Jun	155
1	10	24-Jun	4-Jul	136
Total Days		50		

2029 White Lake NWR				
Grazing 210 AU				
Cell	Days	Date In	Date Out	Acres
4	15	15-May	30-May	138
5	15	30-May	14-Jun	186
1	10	14-Jun	24-Jun	136
Total Days		40		

2030 White Lake NWR				
Grazing 210 AU				
Cell	Days	Date In	Date Out	Acres
2	16	15-May	31-May	155
3	24	31-May	24-Jun	247
Total Days		40		