



**Canaan Valley National Wildlife Refuge  
Hunting Permit 2025-2026**  
When signed and carried, this serves as your permit for all refuge hunts and acknowledges your understanding of the regulations contained herein.  
Expires August 31, 2026

Signature (permits are not transferable)

**Welcome**  
Canaan Valley National Wildlife Refuge was established in 1994 to protect wetlands and to conserve wildlife resources. The refuge conserves the largest shrub and bog wetland complex in the southern Appalachians, supporting diverse resident and migratory wildlife populations. A popular destination for outdoor recreation, public uses include wildlife observation, photography, environmental education, interpretation, hunting, and fishing, in accordance with State, Federal, and refuge regulations. The refuge’s Comprehensive Conservation Plan identifies hunting as an acceptable and traditional form of recreation, particularly on lands that have historically supported hunting.

**Safety**  
During World War II, the US Army used the refuge and surrounding area for target practice. There is a risk that some undetected UXOs (Unexploded Ordnance) may resurface. The powder used in these may still be explosive. UXOs can vary in shape and size up to 23 inches. They may look old and rusty or shiny and new. In the event that you encounter a UXO on the refuge, do not touch or move it. Mark the location by getting a GPS point or leaving a physical marker nearby. Then, retreat from the area going back the way you came. Finally, report the UXO to the US Army by calling 1-888-283-0303.

There is also an active gas pipeline on refuge property. Do not shoot gas markers or near the gas line.

**Firearms**  
Persons possessing, transporting, or carrying firearms on National Wildlife Refuge System lands must comply with all provisions of State and local law. Persons may only use (discharge) firearms in accordance with refuge regulations (50 CFR 27.42 and specific refuge regulations in 50 CFR Part 32). Weapons legally possessed for hunting are the same as those prescribed by the West Virginia Division of Natural Resources. Pistols may only be used in the rifle zone area.

**Vehicles**  
Licensed vehicles are allowed on public and refuge access roads. Off-road vehicles including ATV’s and snowmobiles are prohibited. Non-motorized carts may be used to facilitate the removal of deer. Vehicles must park in designated parking areas, as shown on map, or within 10 feet of open refuge roads in a manner that will not interfere with the normal flow of traffic. Parking overnight on refuge roads is prohibited. Vehicles must remain on established roads as indicated on the map of this brochure. Refuge roads may be seasonally closed due to adverse weather conditions or management needs.

**Accessibility Information**  
Disabled hunters are encouraged to participate in refuge hunts. Four accessible hunting blinds are available for use on the refuge by reservation throughout the hunting season. Please contact the refuge headquarters at 304-866 3858 ext. 1622 to request additional information about disabled access.

**Hunting and Fishing Regulations**  
Hunting and fishing regulations are designed to provide safe recreational opportunities through wise use of renewable wildlife resources. Hunting and fishing are permitted in accordance with Federal regulations governing public use on National Wildlife Refuges as set forth in Title 50 of the Code of Federal Regulations.” Hunting and fishing will be in accordance with applicable State of West Virginia regulations subject to the conditions stated below.

**Access**  
Refuge lands can be accessed from the following locations: State Route 32, Cortland Road, Beall Lane, Timberline Road, Freeland Road, Forest Road 80, Camp 70 Road, and A-Frame Road. Parking areas are depicted on the map in this brochure. The refuge is open from 1 hour before sunrise until 1 hour after sunset, however hunt times are set by the State.

Activity	Season	Hunt Area	Other Regulations
<b>Big Game hunting</b> (White-tailed Deer, Black bear, Wild Turkey)	Hunting is permitted in accordance with State seasons from September 1 through February 28. Turkey may also be hunted during the State’s spring season.	Hunting is permitted on most refuge lands. The areas surrounding refuge headquarters and “No hunting Zones” are closed to big game hunting.	State regulations apply. All State approved archery equipment is allowed.
<b>Upland Game hunting</b> (ruffed grouse, rabbit, hare, squirrel, fox, raccoon, bobcat, woodchuck, coyote, opossum, skunk)	Hunting is permitted in accordance with State seasons from September 1 through February 28.	Hunting is permitted on most refuge lands. The Research Natural Area, area around refuge headquarters, and “No Hunting Zones” are closed to upland game hunting.	Night hunters must also possess a refuge hunting permit.
<b>Migratory Bird Hunting</b> (waterfowl, mourning dove, coot, rail, gallinule, snipe, woodcock)	Hunting is permitted in accordance with State seasons from September 1 through February 28.	Hunting is permitted on most refuge lands. The Research Natural Area, area around refuge headquarters, and “No Hunting Zones” are closed to migratory bird hunting.	Migratory bird hunters may also need additional stamps and a Harvest Information Program (HIP) number. Please refer to State Migratory Bird Hunting Regulations for further information.

Only persons possessing a current, signed Canaan Valley National Wildlife Refuge hunting permit, a Government issued photo ID, and a West Virginia State hunting license are authorized to hunt on the refuge. Please fill out and sign the permit information on the front of this brochure. You must carry the signed hunt permit or brochure with you at all times while hunting on the refuge. State hunting regulations, shooting hours, methods of take, and harvest limits apply to all hunting on the refuge.

All refuge access is prohibited after dark unless specifically authorized by the Refuge Manager.

**Dogs**  
Scouting or dog training is allowed seven days before opening day of the season with appropriate licenses. Dogs can be used to hunt birds, bear, raccoon, rabbit, and hare. Migratory bird hunters may have no more than 2 pointing and/or retrieving dogs in the field. No more than 6 dogs per hunting party are permitted for bear or raccoon. No more than 4 dogs per hunting party are permitted for rabbit or hare. **One leashed dog may be utilized to track wounded deer, bear, and wild turkey September 1 through February 28.** Extra dogs remaining in a hunter’s vehicle will not count as dogs in the field. Hunters must account for all dogs at the conclusion of the hunt. All dogs are required to wear a collar displaying the owner’s name and telephone number. When hunting bear, releasing and picking up dogs on Cortland Road and Beall Lane is prohibited.

**Tree Stands**  
Only temporary tree stands or blinds may be used. All tree stands must have the current hunting license number, or name and cell phone number clearly printed on the stand. All stands must be removed by the last day of deer season.

**Harvest Reporting**  
You must report your harvest in this system at [www.wvhunt.com](http://www.wvhunt.com) or by phone at 1-844-824-3251 (1-844-UCheck1). Be sure to indicate the game was taken on Public Land - National Wildlife Refuge.

**Canaan Valley National Wildlife Refuge**  
6263 Appalachian Highway Davis, WV 26260  
304-866-3858  
[www.fws.gov/refuge/canaan\\_valley/canaanvalley@fws.gov](http://www.fws.gov/refuge/canaan_valley/canaanvalley@fws.gov)  
For State relay service TTY/ Voice: 711

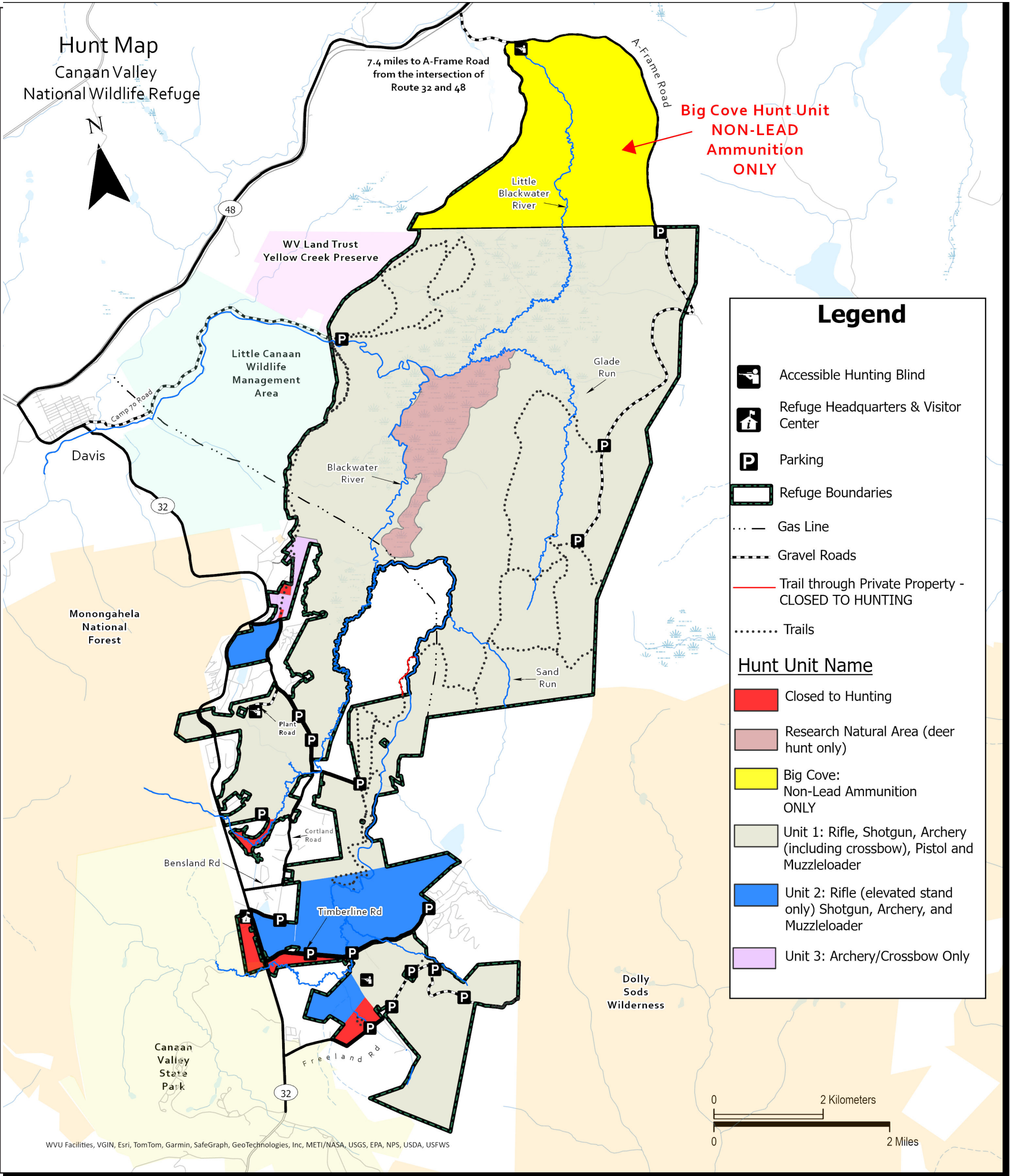
The refuge is part of the National Wildlife Refuge System, a national network of lands and waters managed for the benefit of wildlife and people. <http://www.fws.gov/>

1-800-344-WILD



As indicated in the finalized ruling by the U.S. Fish and Wildlife Service posted November 2024 (50 CFR Part 32), the Canaan Valley National Wildlife Refuge will require lead-free ammunition for all hunting involving firearms within the Big Cove Unit (see map). The best available science, analyzed as part of the rulemaking, indicates that lead ammunition has negative impacts on both wildlife and human health. Hunting with lead ammunition is still permitted on other units within the refuge.

**Non-lead Ammunition Incentive**  
To encourage voluntary use of lead-free ammunition across the refuge, the Service is implementing a pilot program, including a rebate incentive in the form of a prepaid debit card for eligible hunters who provide proof of their purchase of lead-free ammunition on a first come, first served basis. More information about this incentive program can be found at our hunt website, [www.fws.gov/refuge/canaan-valley/visit-us/activities/hunting](http://www.fws.gov/refuge/canaan-valley/visit-us/activities/hunting)



**Signs and Boundaries**

- Refuge Boundary
- Entry is in accordance with refuge regulations.
- Public Hunting Area
- The area behind this sign is open for hunting in accordance with State and refuge regulations.
- Area Closed
- Areas on the refuge are closed to provide resource protection, special management activities, or for safety reasons. (See map for specific closures).
- No Vehicles
- This area is closed to all motorized vehicles and bicycles.
- No Rifle Zone
- **This sign is still found on the refuge. This unit has been changed to rifle from an elevated stand. See map for more information.**
- Safety Zone
- This sign marks the safety zone boundary. Shooting behind the safety zone boundary is prohibited to protect nearby residences. Established safety zones follow State regulations whether signs are in place or not.

**Prohibited Activities**

- A refuge hunting permit authorizes you to take specified game species only. Harming or needlessly disturbing any wildlife including birds, mammals, turtles, frogs, lizards, and snakes is a violation of Federal regulations and is cause for prosecution.
- Possession of alcoholic beverages
- Marking any tree or other refuge feature with flagging, paint or other substances is prohibited.
- Disturbing, injuring, destroying, collecting, or attempting to collect any Articles of Antiquity or items of historical value, plants, animals, or parts thereof is strictly prohibited.
- Baiting and/or hunting over bait is prohibited on the refuge.
- Bending, trimming, or cutting branches is prohibited
- It is unlawful to drive a nail, spike, climbing screw, or other metal object into any tree or to hunt from any tree in which a nail, spike, climbing screw, or other metal object has been driven.
- All accidents and injuries occurring on the refuge must be reported in a timely manner.
- Organized deer drives are prohibited.
- Camping is prohibited.
- **No Unmanned Aircraft System (UAV) may be utilized on the refuge per 50 CFR 27.34 and 51.**

All accidents and injuries occurring on the refuge must be reported in a timely manner.  
To report wildlife violations contact 1-304-815-3000

This is a unit of the National Wildlife Refuge System, a network of lands and waters managed for the benefit of wildlife and people.

