

A close-up photograph of a bright yellow flower with a dark brown center, serving as the background for the text.

# **Classification and Recovery Actions**

**Carlsbad & Palm Springs  
Fish and Wildlife Offices**

**Spring Biannual Tribal Coordination Meeting  
May 13th, 2025**







The background of the slide is a close-up photograph of a bright yellow flower. Two bees are visible: one in the upper right quadrant, facing left, and another in the lower left quadrant, facing right. The bees are covered in yellow pollen. The text is overlaid on the left side of the image.

# **Overview**

- 1. Listing Actions**
- 2. Reclassification Actions**
- 3. Recovery Planning**







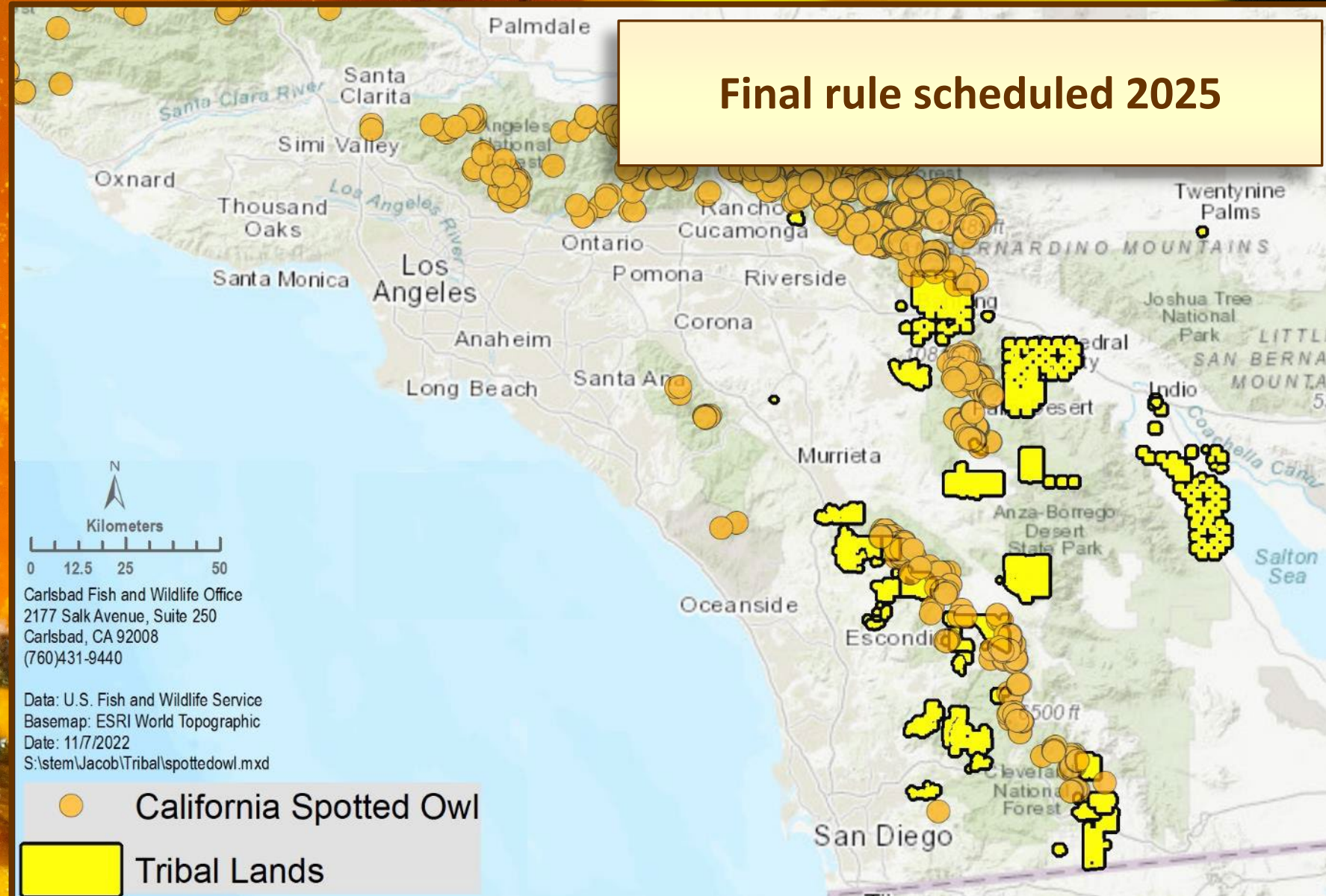
# Listing Actions

Species	Listing Action	Publication Date	Citation
California spotted owl	<ul style="list-style-type: none"> <li>12-month: Proposed to list Endangered (southern DPS)</li> <li>Final rule</li> </ul>	<ul style="list-style-type: none"> <li>February 23, 2023</li> <li>Scheduled 2025</li> </ul>	88 FR 11600
Western pond turtle	<ul style="list-style-type: none"> <li>12-month: Proposed to list as Threatened (SW pond turtle)</li> <li>Comment period re-opened (closed May 6, 2024)</li> <li>Final rule</li> <li>Proposed critical habitat</li> </ul>	<ul style="list-style-type: none"> <li>October 3, 2023</li> <li>April 4, 2024</li> <li>Scheduled 2025</li> <li>Scheduled 2025</li> </ul>	88 FR 68370 89 FR 23534
Western spadefoot	<ul style="list-style-type: none"> <li>12-month: Proposed to list as Threatened (southern DPS)</li> <li>Final rule</li> <li>Proposed critical habitat</li> </ul>	<ul style="list-style-type: none"> <li>December 5, 2023</li> <li>Scheduled 2025</li> <li>Scheduled 2025</li> </ul>	88 FR 84252
Santa Ana speckled dace	<ul style="list-style-type: none"> <li>12-month: Proposed to list as Threatened with a 4(d) rule</li> <li>Final rule</li> <li>Proposed critical habitat</li> </ul>	<ul style="list-style-type: none"> <li>August 14, 2024</li> <li>Scheduled 2025</li> <li>Scheduled 2025</li> </ul>	89 FR 65816
Inyo Rock Daisy	<ul style="list-style-type: none"> <li>Substantial 90-day petition finding</li> <li>12-month finding</li> </ul>	<ul style="list-style-type: none"> <li>March 21, 2023</li> <li>Scheduled 2027</li> </ul>	88 FR 16933
Tecopa birds-beak	<ul style="list-style-type: none"> <li>Substantial 90-day petition finding</li> <li>12-month finding</li> </ul>	<ul style="list-style-type: none"> <li>October 8, 2024</li> <li>TBD</li> </ul>	89 FR 81388
White-margined penstemon	<ul style="list-style-type: none"> <li>Substantial 90-day petition finding</li> <li>12-month finding</li> </ul>	<ul style="list-style-type: none"> <li>January 25, 2024</li> <li>TBD</li> </ul>	89 FR 4885
Mohave ground squirrel	<ul style="list-style-type: none"> <li>Substantial 90-day petition finding</li> <li>12-month finding</li> </ul>	<ul style="list-style-type: none"> <li>January 21, 2025</li> <li>TBD</li> </ul>	90 FR 7038



# California spotted owl southern DPS

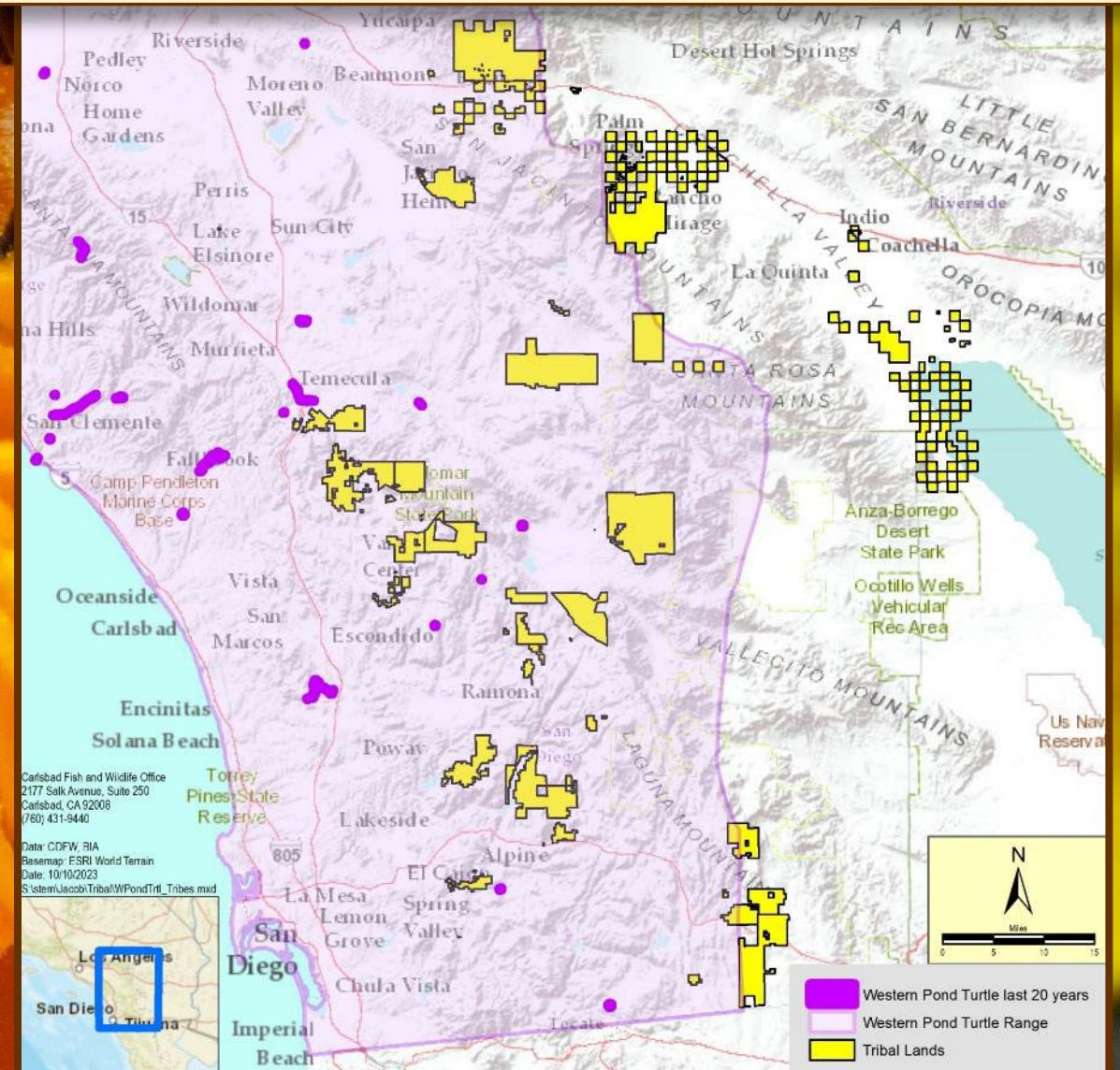
Proposed: Endangered





**Final listing rule scheduled for 2025;  
Proposed critical habitat 2025**

A close-up photograph of a turtle's head and front leg. The turtle has dark, scaly skin with yellowish-brown markings. Its eyes are yellowish-brown. The front leg is extended, showing a scaly pattern. The turtle is being held by a person's hand, with fingers visible at the bottom. The background is a blurred, natural outdoor setting.



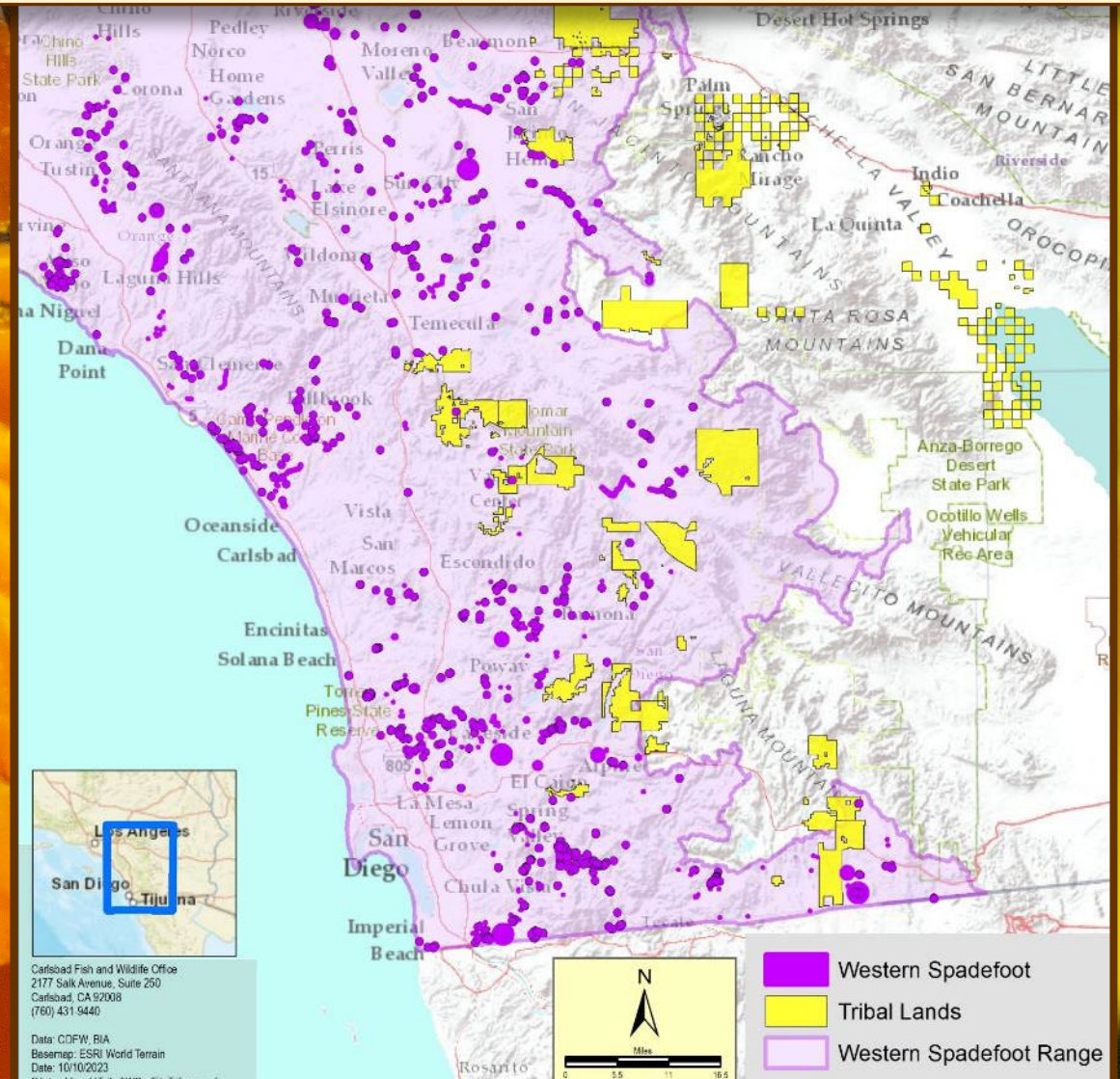


# Western spadefoot southern DPS

Proposed: Threatened



Final listing rule scheduled 2025;  
Proposed critical habitat scheduled 2025





# Santa Ana speckled dace

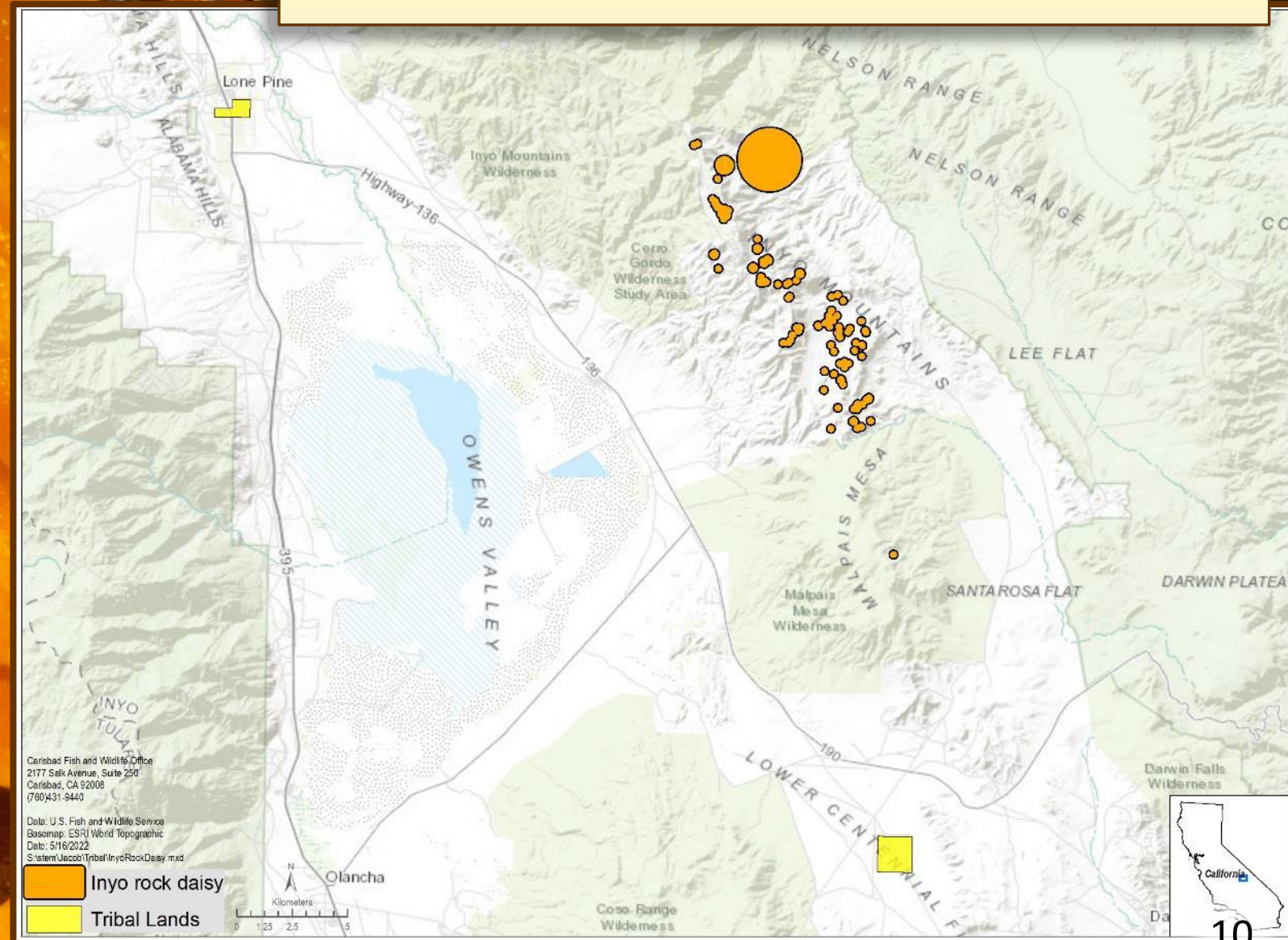
Proposed: Threatened





# Inyo rock daisy

12-month finding scheduled 2027

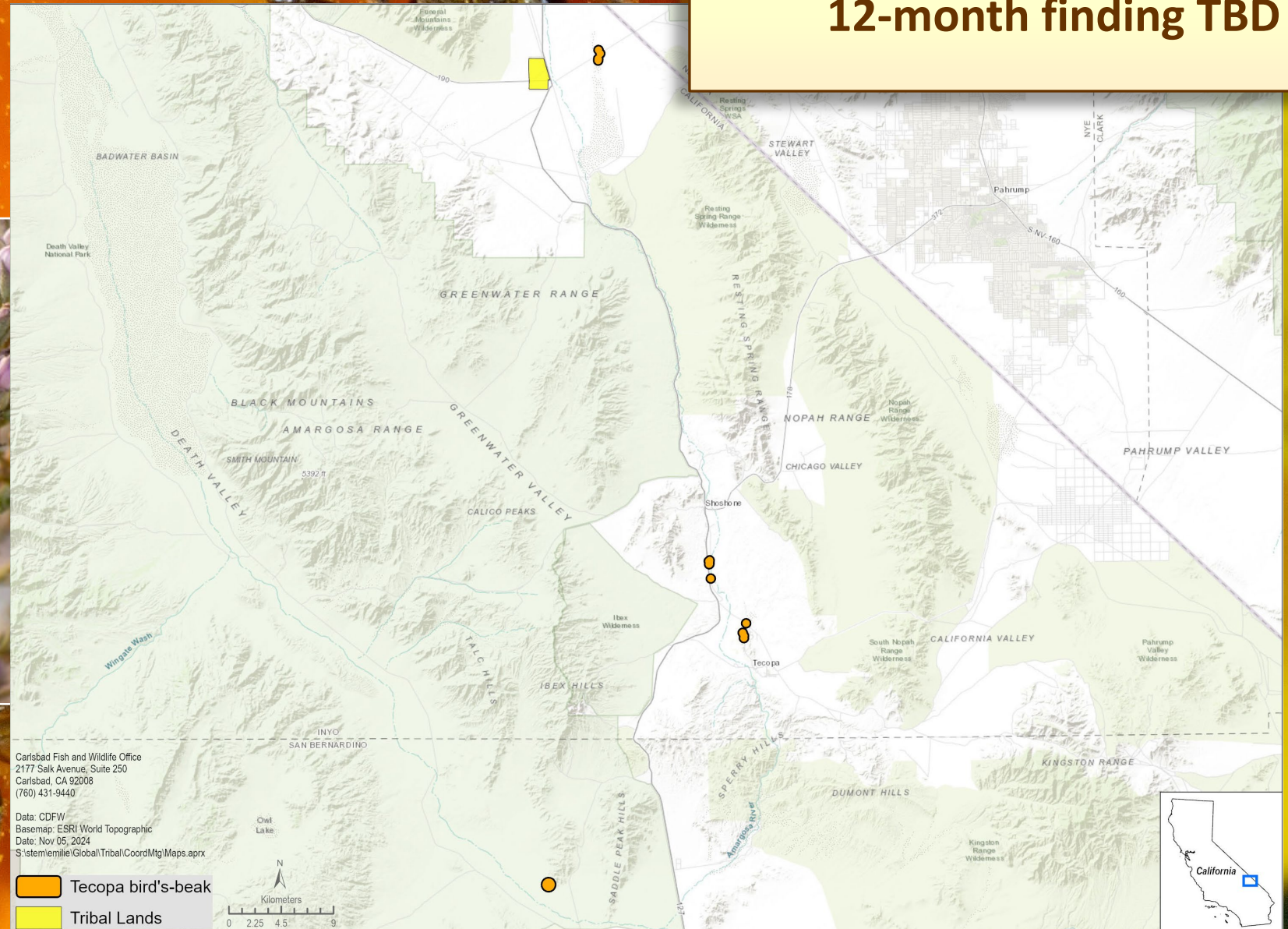




# Tecopa bird's-beak



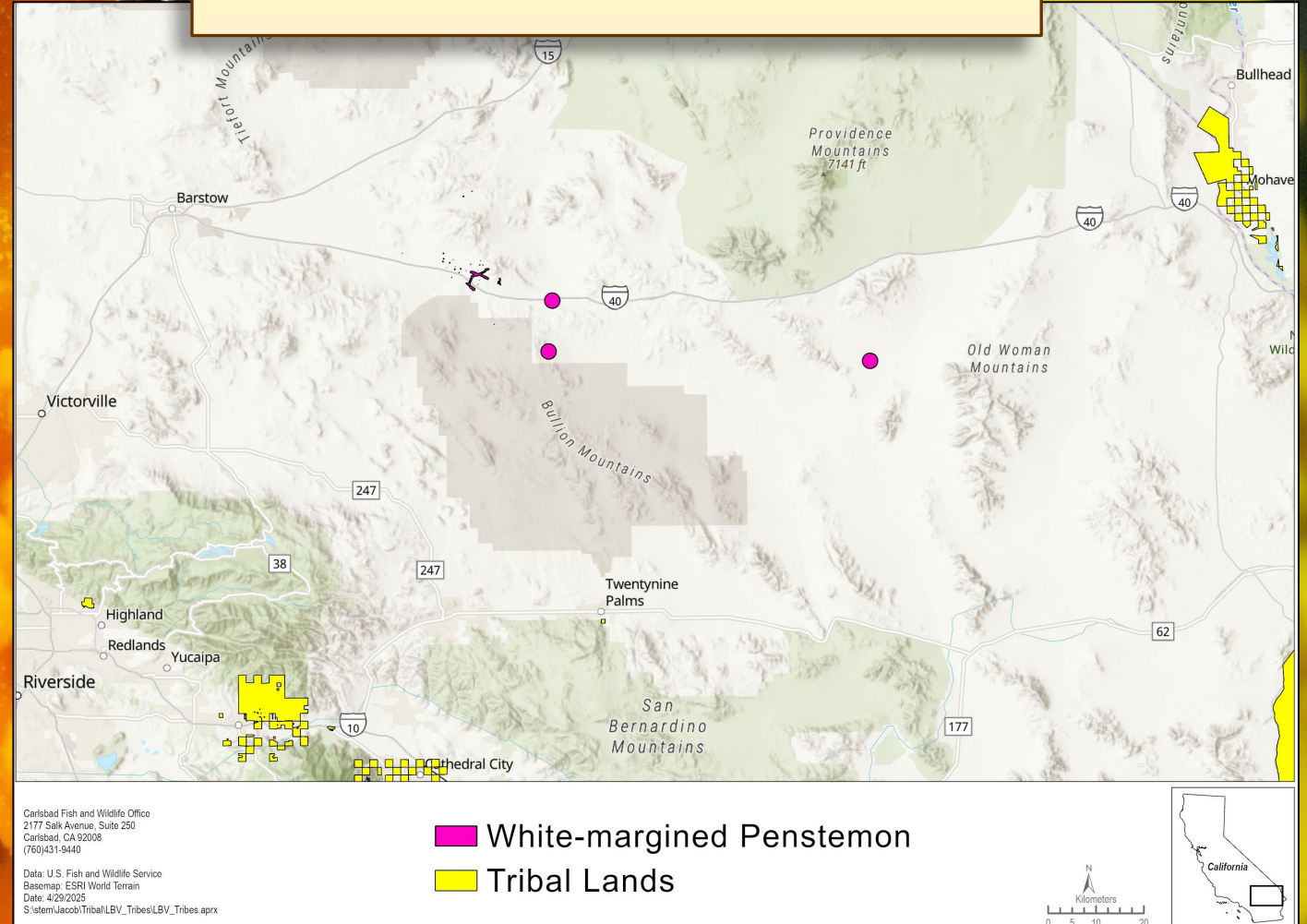
90-day finding published 2024;  
12-month finding TBD





# White-margined penstemon

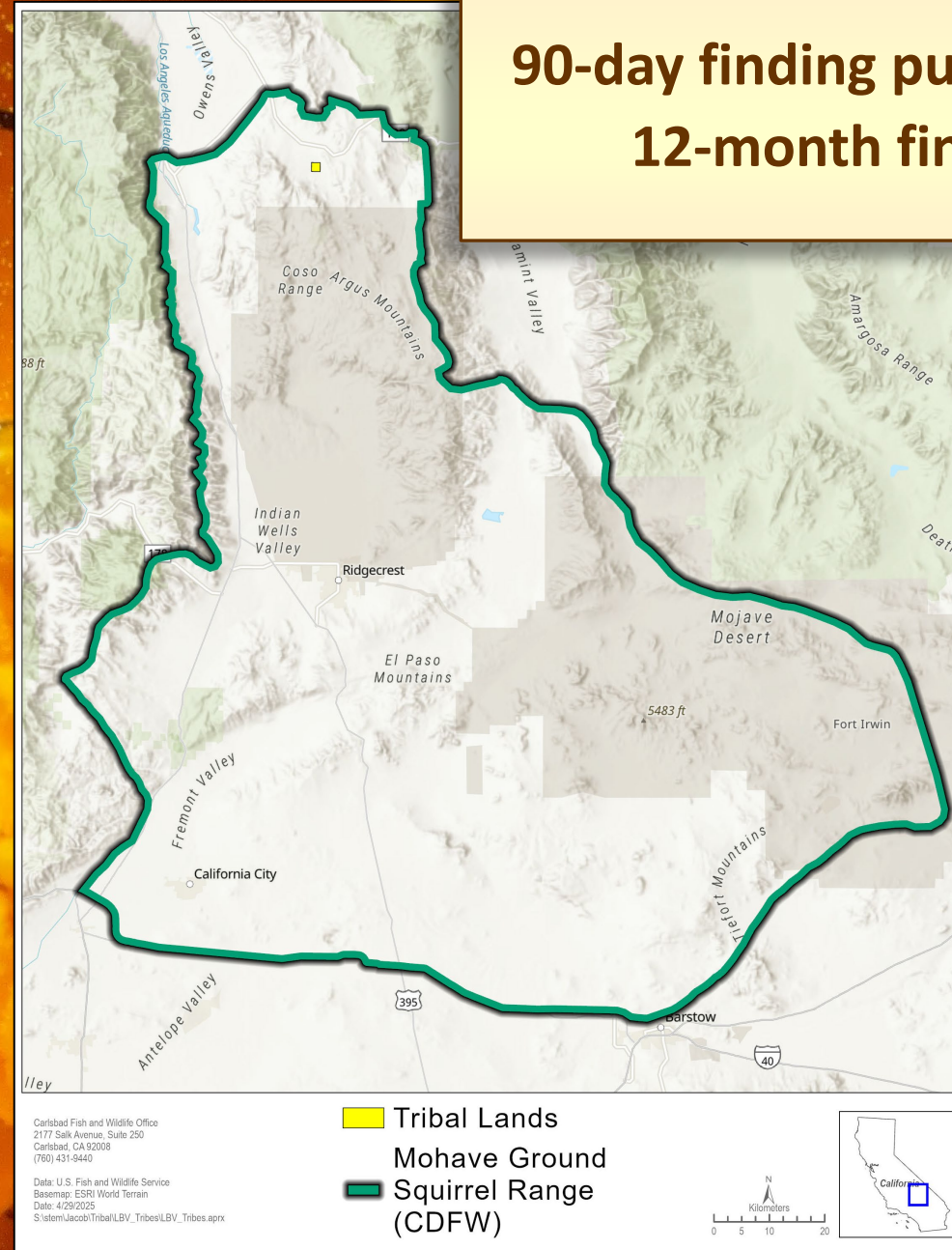
90-day finding published 2024;  
12-month finding TBD





# Mohave ground squirrel

90-day finding published 2024;  
12-month finding TBD



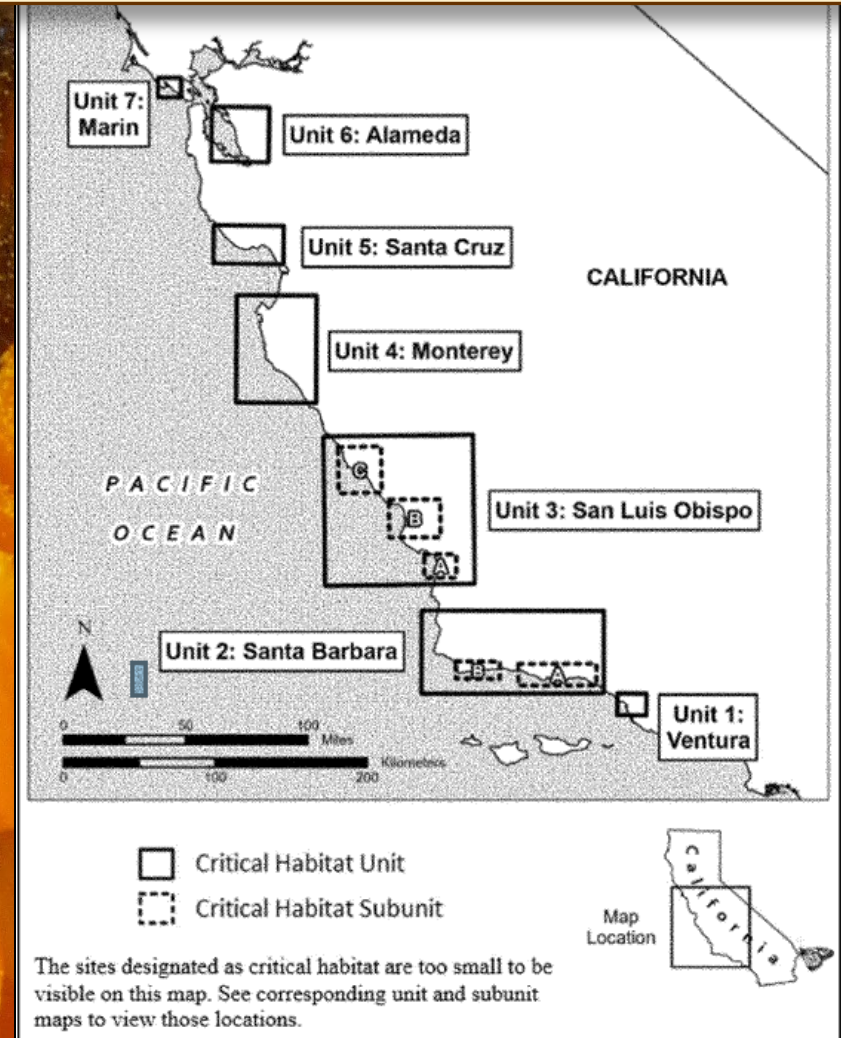


# Monarch Butterfly

Proposed: Threatened



- Proposed rule published 2024;
- Comment period open till May 19th



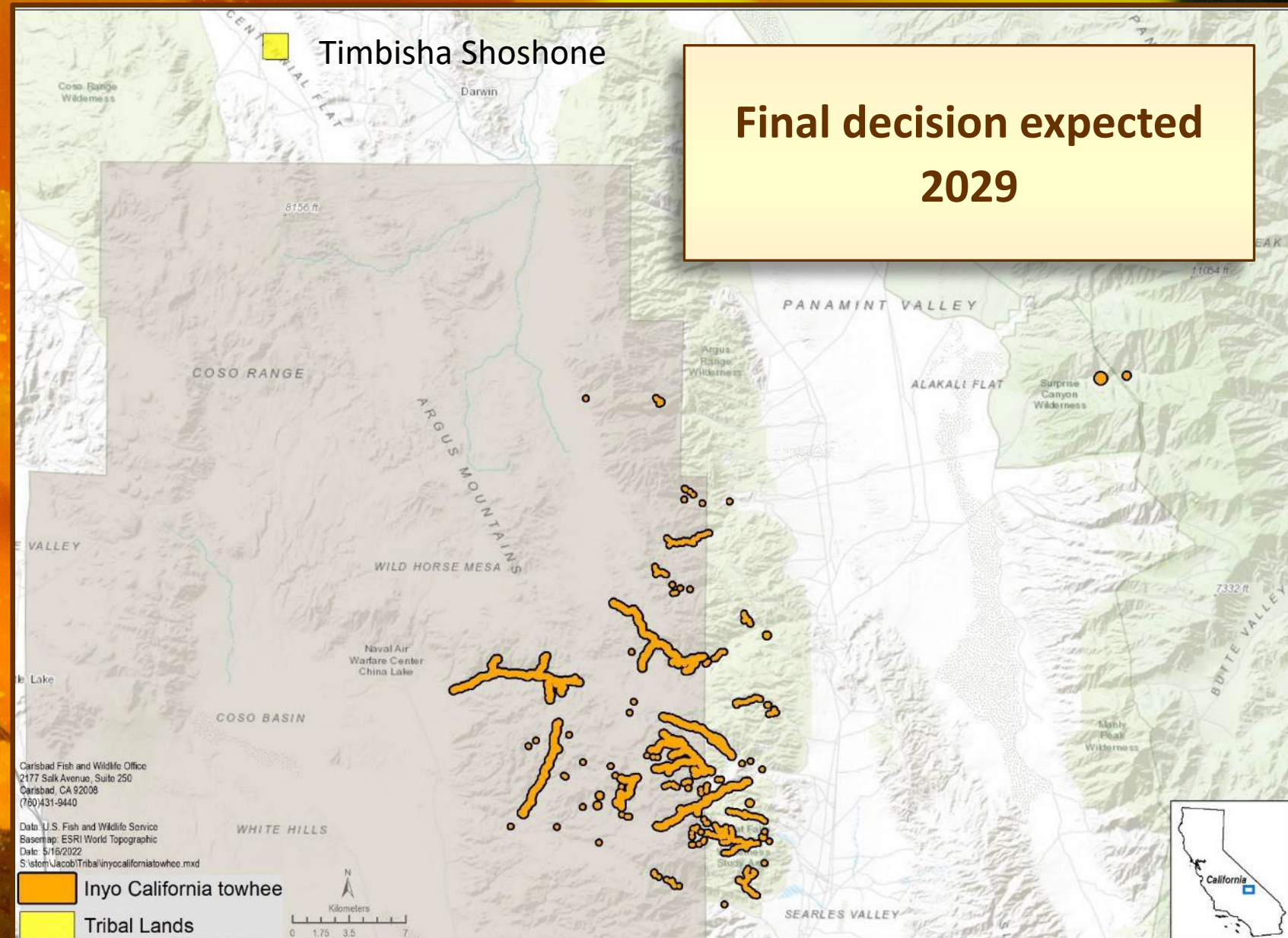


# Reclassification Actions

Species	Listing Action	Publication Date	Citation
Inyo California towhee	<ul style="list-style-type: none"><li>• Proposed rule to delist</li><li>• Final decision expected 2029</li></ul>	<ul style="list-style-type: none"><li>• November 4, 2013</li><li>• TBD</li></ul>	78 FR 65938
Least Bell's vireo	<ul style="list-style-type: none"><li>• Potential reclassification</li></ul>	<ul style="list-style-type: none"><li>• TBD</li></ul>	TBD

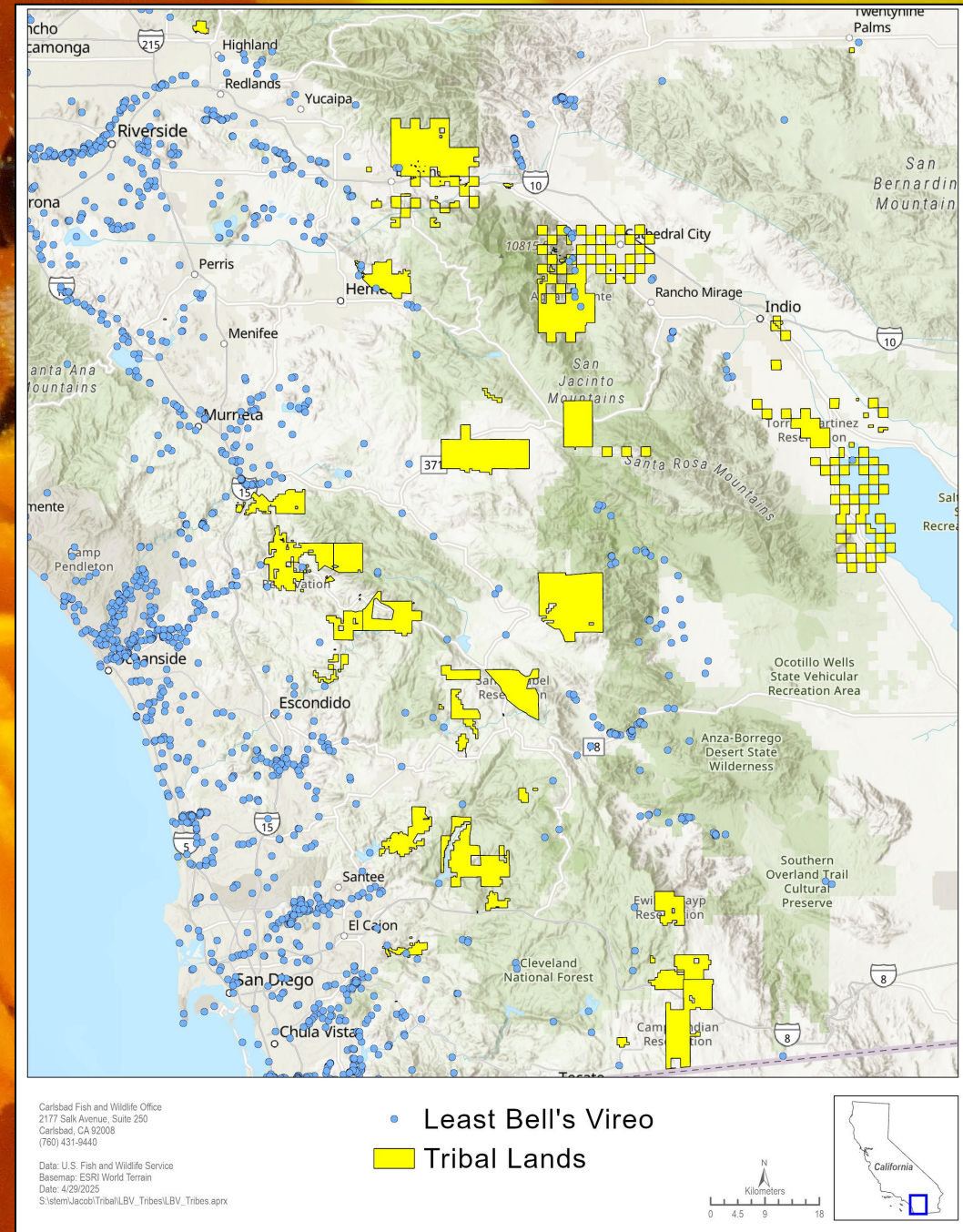


# Inyo California towhee





# Least Bell's vireo





# Recovery Plans

Species	Action	Expected Publication Date
San Bernardino kangaroo rat	Final Recovery Plan	Completed 11/20/2024
Coastal California gnatcatcher	Draft Recovery Plan	2025 (at RO)
Casey's June beetle	Draft Recovery Plan	2025 (at RO)
Hermes copper butterfly	Draft Recovery Plan	2025
Amargosa niterwort	Draft Recovery Plan	2025
San Bernardino bluegrass	Draft Recovery Plan	2026



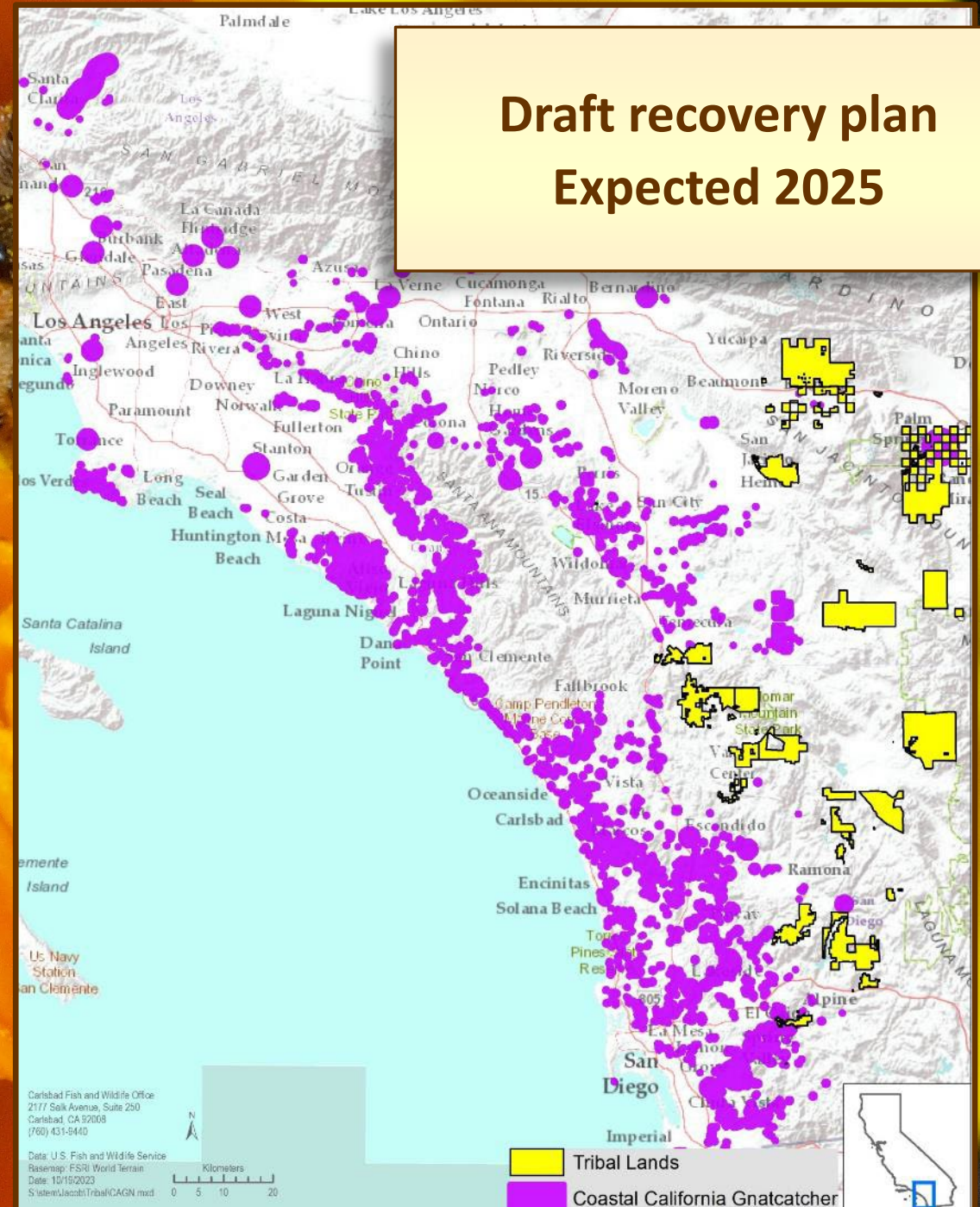
[illegible]



# Coastal California Gnatcatcher

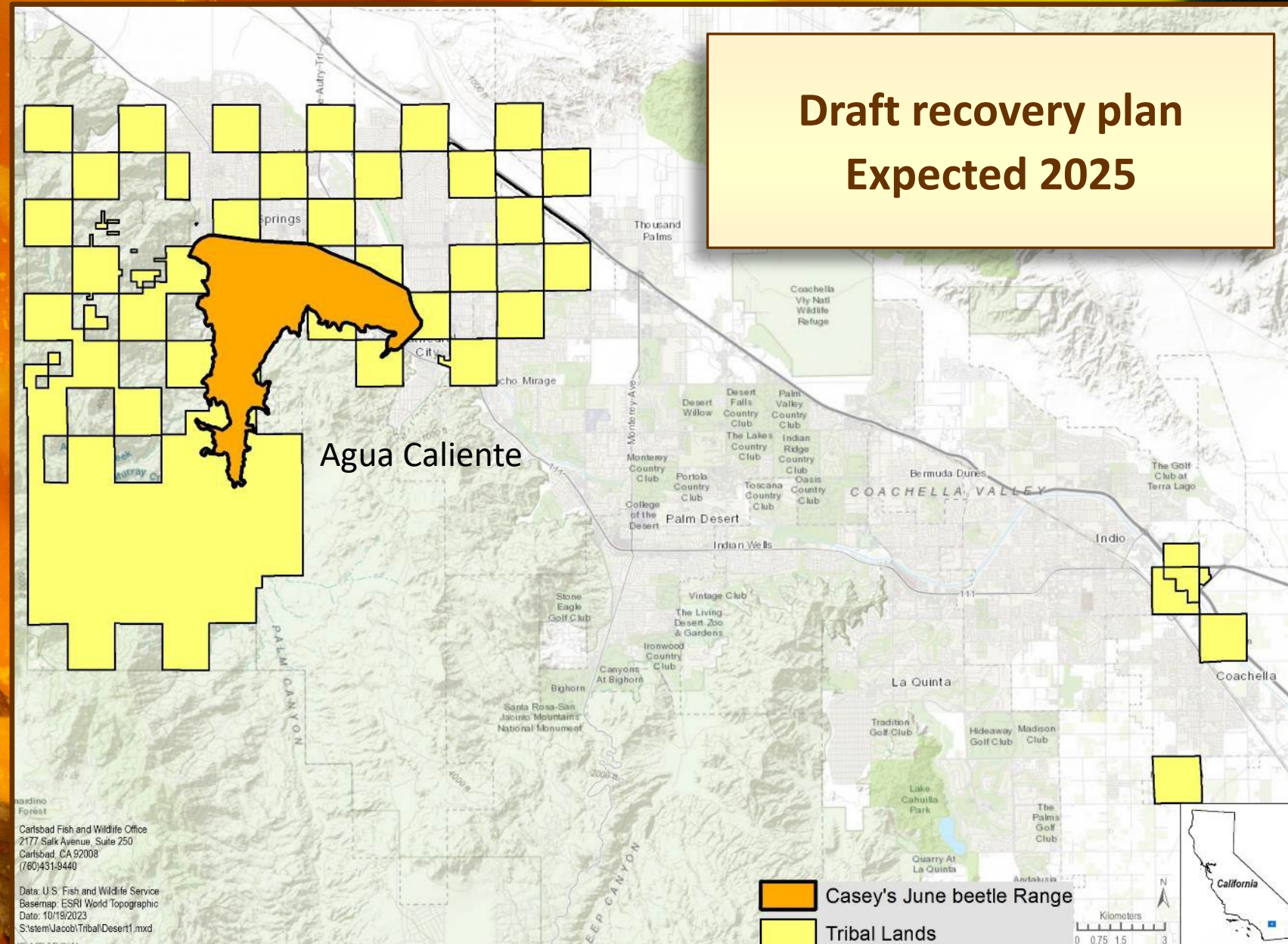


Draft recovery plan  
Expected 2025



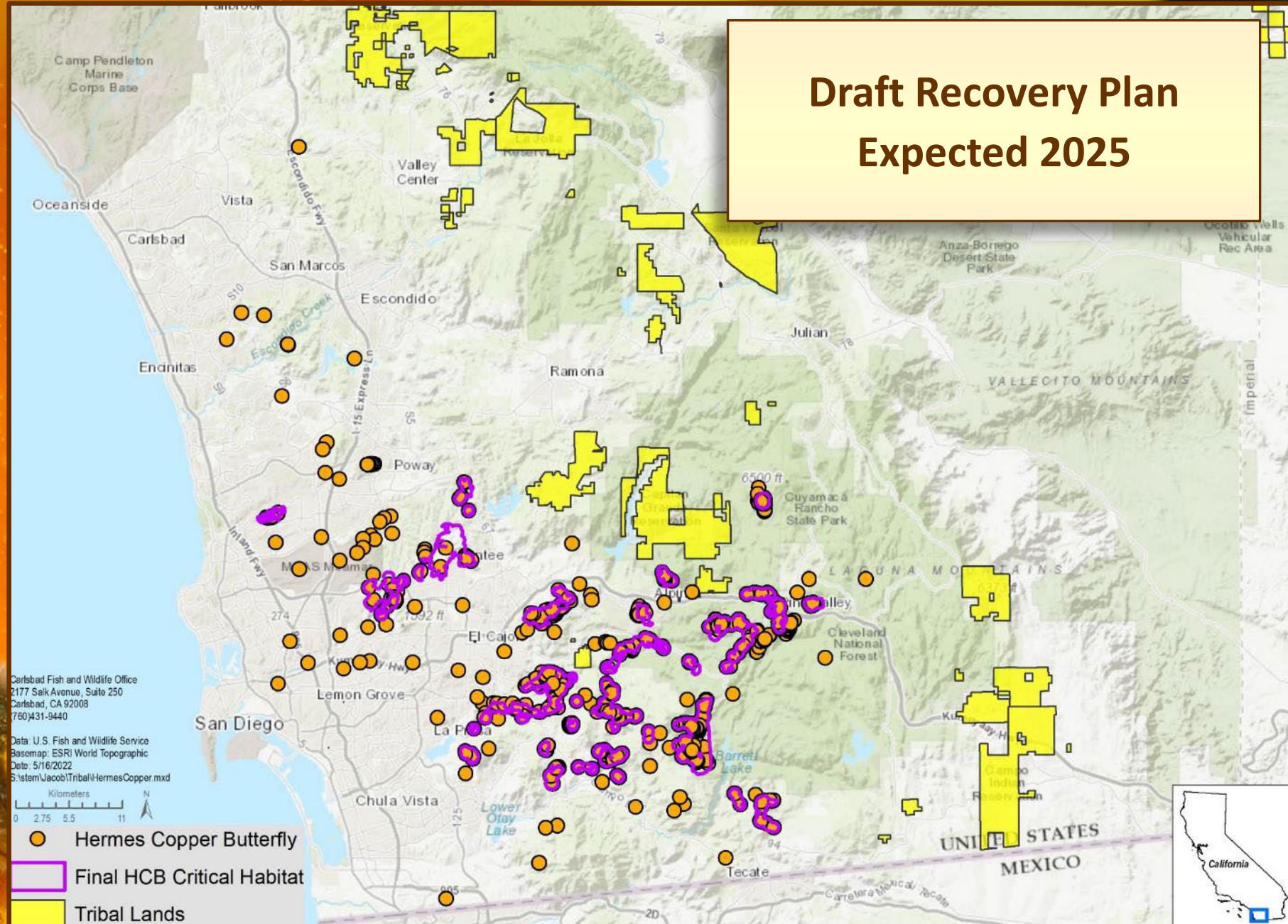


# Casey's June Beetle





# Hermes Copper Butterfly

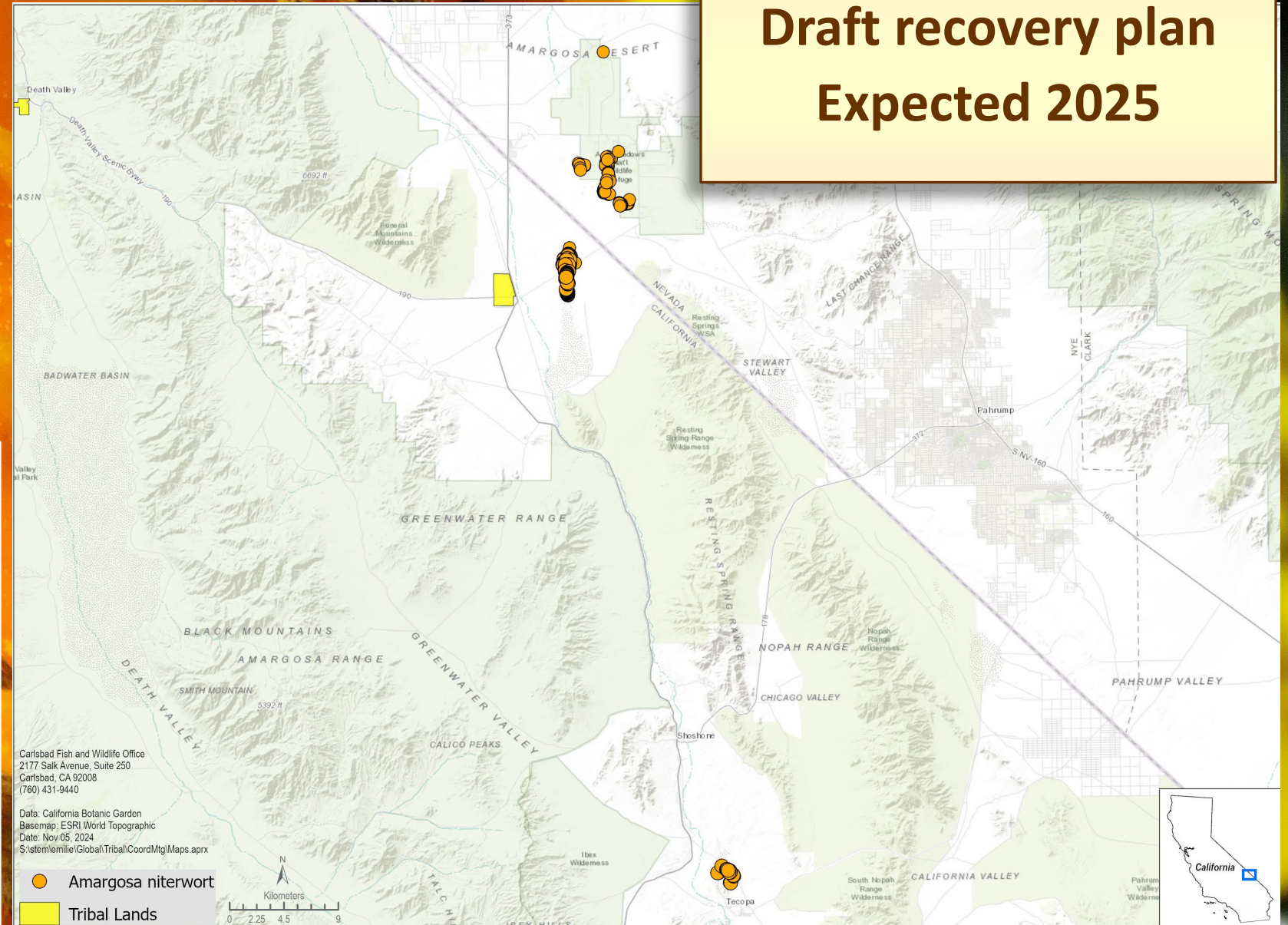




# Amargosa niterwort



**Draft recovery plan  
Expected 2025**









# Contracted Recovery Plans

Species	
Stephens' kangaroo rat	Cushenbury milk-vetch
Willowy monardella	San Bernardino Mountains bladderpod
Laguna beach liveforever	Cushenbury buckwheat
Vail Lake ceanothus	Parish's daisy
Lane Mountain milk-vetch	Cushenbury oxytheca
Coachella Valley milk-vetch	Orcutt's spine flower



# Five-year status reviews

If you would like to share any information about the upcoming review species, please let us know.

[CFWO\\_tribal\\_coordination@fws.gov](mailto:CFWO_tribal_coordination@fws.gov)

## Initiated in 2024

Stephens' kangaroo rat

San Clemente loggerhead shrike

Mohave Tui chub

Pacific pocket mouse

Big-leaved crownbeard

San Clemente Island woodland-star

Salt marsh bird's-beak

Vail Lake ceanothus

California least tern

Ash-grey paintbrush

Light-footed Ridgway's rail

Desert slender salamander



A close-up photograph of a yellow flower with two bees. One bee is at the top, facing away from the camera, and the other is at the bottom, facing the camera. The flower's petals are bright yellow, and the center shows the stamens. The bees are dark with some yellow pollen on their bodies.

# Questions?

[cfwo\\_tribal\\_coordination@fws.gov](mailto:cfwo_tribal_coordination@fws.gov)