



U.S. Fish and Wildlife Service

# Reptiles and Amphibians

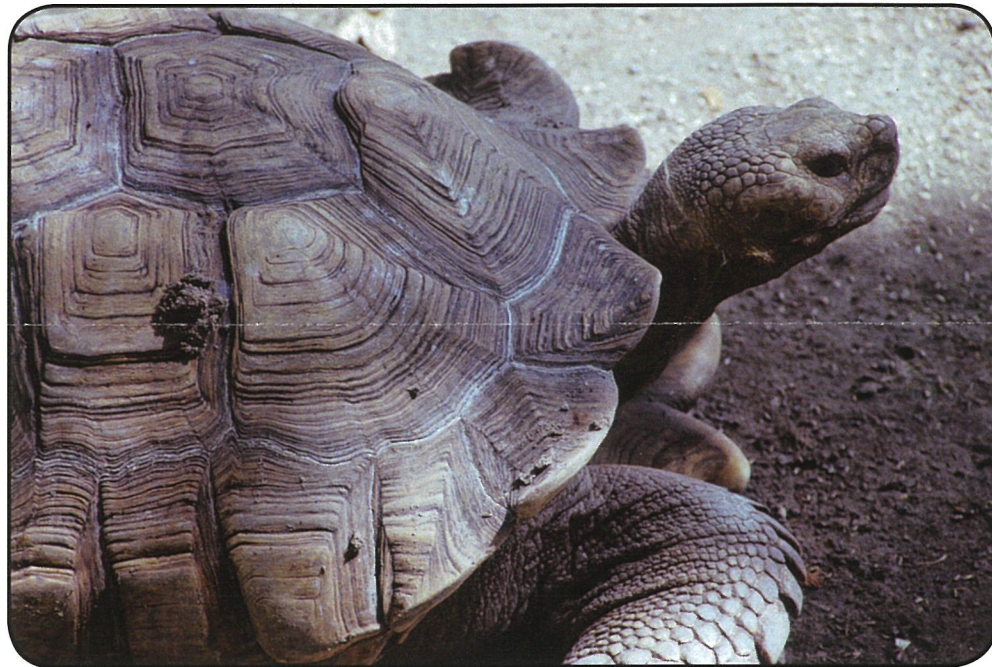
## *Cibola National Wildlife Refuge*

Cibola National Wildlife Refuge was established in 1964 as mitigation for channelization and dam construction on the Colorado River in the 1930s and 1940s. The refuge is located in the floodplain of the Lower Colorado River and provides important habitat for migratory birds, wintering waterfowl, and resident species. The refuge contains several miles of historic river channels and backwaters that provide key habitats in a changed environment.

### Refuge Wildlife

About 240 species of birds use the refuge during the year.

Cibola NWR provides important riparian and upland nesting areas for a variety of songbirds and is a critical wintering area for Canada geese and greater sandhill



cranes. Several endangered and threatened species use the refuge. Included are the willow flycatcher, brown pelican, peregrine falcon, bald eagle, Yuma clapper rail,

bonytail chub, and razorback sucker. Other resident bird species include Gambel's quail, kestrel, Harris' hawk, roadrunner, phainopepla, and burrowing owl. Mule deer, coyote, and bobcat are common mammals on the refuge. Visitors occasionally spot mountain lion, kit fox, gray fox, and badger on the refuge as well. Many species of reptiles and amphibians, including the western diamondback and sidewinder rattlesnakes also call the refuge home.

### Class Amphibia (Amphibians)

#### Order Anura (Toads, frogs, and treefrogs)

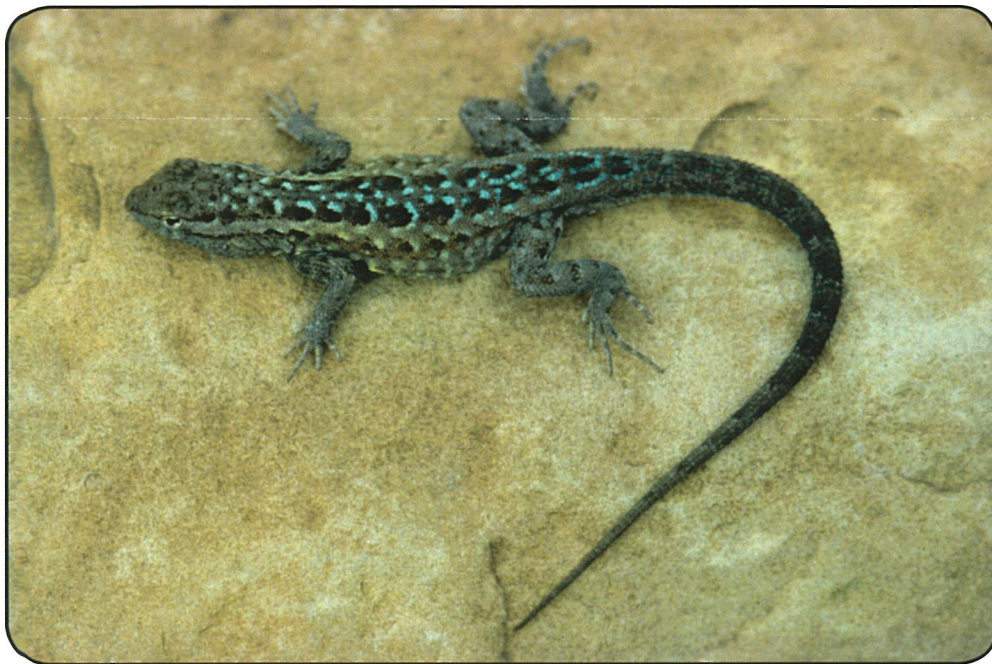
*Family Bufonidae*  
(Toads)

Great Plains Toad

*Bufo cognatus*

Red-Spotted Toad

*Bufo punctatus*



Top, Desert tortoise. Above, Side-blotched Lizard. / USFWS Photographs

Woodhouse's toad  
*B. woodhousii woodhousii*  
Couch Spadefoot Toad  
*Scaphiopus couchii*

Family Ranidae  
Bullfrog  
*Rana catesbeiana*

Class Reptilia (Reptiles)

**Order Crocodylia (Alligators, caimans, lizards, and iguanian lizards)**

Lizards  
Western Banded Gecko  
*Coleonyx variegatus*  
Desert Iguana  
*Dipsosaurus dorsalis*  
Chuckwalla

*Sauromalus obesus*  
Desert Collared Lizard  
*Crotaphytus insularis*  
Leopard Lizard  
*Gambelia wislizenii*  
Desert Spiny Lizard  
*Sceloporus magister*  
Side-blotched Lizard  
*Uta stansburiana*  
Long-tailed Brush Lizard  
*Urosaurus graciosus*  
Tree Lizard  
*Urosaurus omatus*  
Desert Horned Lizard  
*Phrynosoma platyrhinos*  
Zebra-tailed Lizard  
*Callisaurus draconoides*  
Western Whiptail  
*Cnemidophorus tigris*



Above, Mojave rattlesnake Below, Sidewinder. / USFWS Photographs

**Order Squamata (Snakes)**

Family Colubridae  
(Typical snakes)  
Western Blind Snake  
*Leptotyphlops humilis*  
Coachwhip  
*Masticophis flagellum*  
Western Patch-nosed  
*Salvadora hexalepis*  
Glossy Snake  
*Arizona elegans*  
Banded Sand Snake  
*Chilomeniscus cinctus*  
Gopher Snake  
*Pituophis melanoleucus*  
Common Kingsnake  
*Lampropeltis getulus*  
Longnosed Snake  
*Rhinocheilus lecontei*

Checkered Garter  
*Thamnophis marcianus*  
Western Groundsnake  
*Sonora semiannulata*  
Western Shovel-nosed  
*Chionactis occipitalis*  
Night Snake  
*Hypsiglena torquata*  
Western Diamondback\*\*  
*Crotalus atrox*  
Sidewinder\*\*  
*Crotalus cerastes*  
Mohave Rattlesnake\*\*  
*Crotalus scutulatus*

\*\*Known to be poisonous

**Order Testudines (Turtles and tortoises)**

Family Trionychidae  
(Softshell turtles)  
Spiny softshell turtles  
*Trionyx spiniferus*  
Desert Tortoise  
*Gopherus agassizii*

*It is unlawful to harass or disturb any wildlife within the refuge.*

**January 2025**

