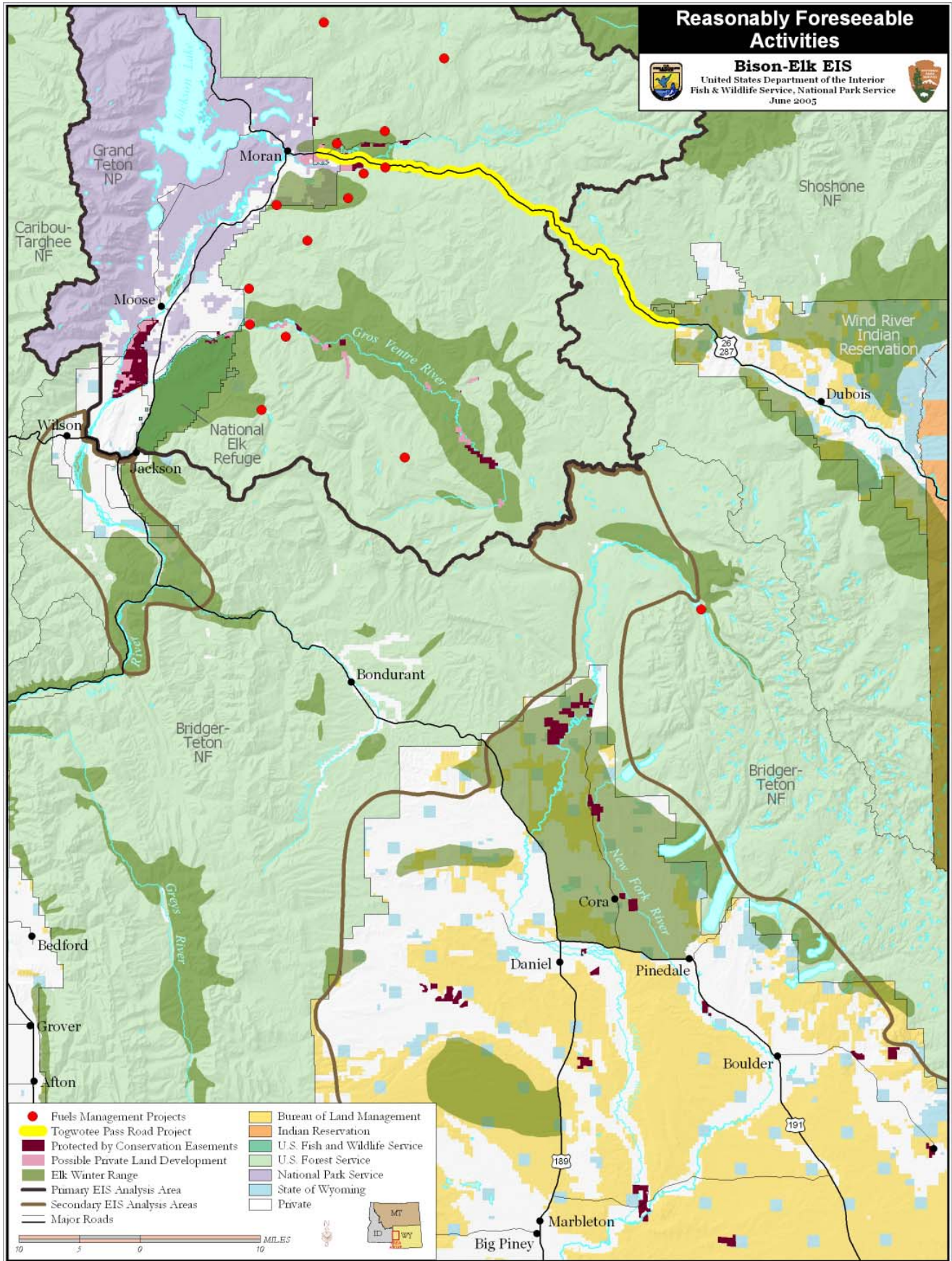


Reasonably Foreseeable Activities



Bison-Elk EIS

United States Department of the Interior
Fish & Wildlife Service, National Park Service
June 2005



- Fuels Management Projects
- Togwotee Pass Road Project
- Protected by Conservation Easements
- Possible Private Land Development
- Elk Winter Range
- Primary EIS Analysis Area
- Secondary EIS Analysis Areas
- Major Roads
- Bureau of Land Management
- Indian Reservation
- U.S. Fish and Wildlife Service
- U.S. Forest Service
- National Park Service
- State of Wyoming
- Private

10 5 0 10 MILES

