



U.S. Fish & Wildlife Service

Arcata Fish & Wildlife Office Fisheries Program

Klamath River Carcass and Redd Surveys – 2015 Summary

Synopsis: Annual fall-run Chinook Salmon carcass and redd surveys on the mainstem Klamath River are conducted jointly by the USFWS Arcata Fish and Wildlife Office (AFWO), Karuk Tribe of California, and Yurok Tribal Fisheries Program (YTFP). Surveys in 2015 began the week of October 5 and concluded the week of November 30, which totaled 9 weeks. Weekly mark-recapture carcass surveys are conducted by AFWO and YTFP crews from Iron Gate Dam to the Shasta River confluence. Weekly redd surveys are conducted by AFWO and Karuk Tribe crews from the Shasta River confluence to the Indian Creek confluence at Happy Camp.

Captures of fresh carcasses (Figure 1), weekly pre-spawn mortality (Figure 2), and redd counts (Figure 3) are compared to previous years' surveys in the following charts. Note that the numbers presented in Figures 1 and 3 are actual cumulative counts that have not yet been expanded into escapement estimates. 'Fresh' carcass numbers in Figure 1 merely indicate relative yearly abundance. After the survey season ends the carcass mark-recapture data is used to estimate escapement above the Shasta River using an area-under-the-curve methodology. Redd counts will be doubled (i.e., one redd represents one adult female and one adult male spawner) to estimate escapement below the Shasta River confluence.

The data presented here are preliminary in nature and subject to revision.

If you have any questions regarding this summary, please contact Steve Gough at (707) 825-5197.

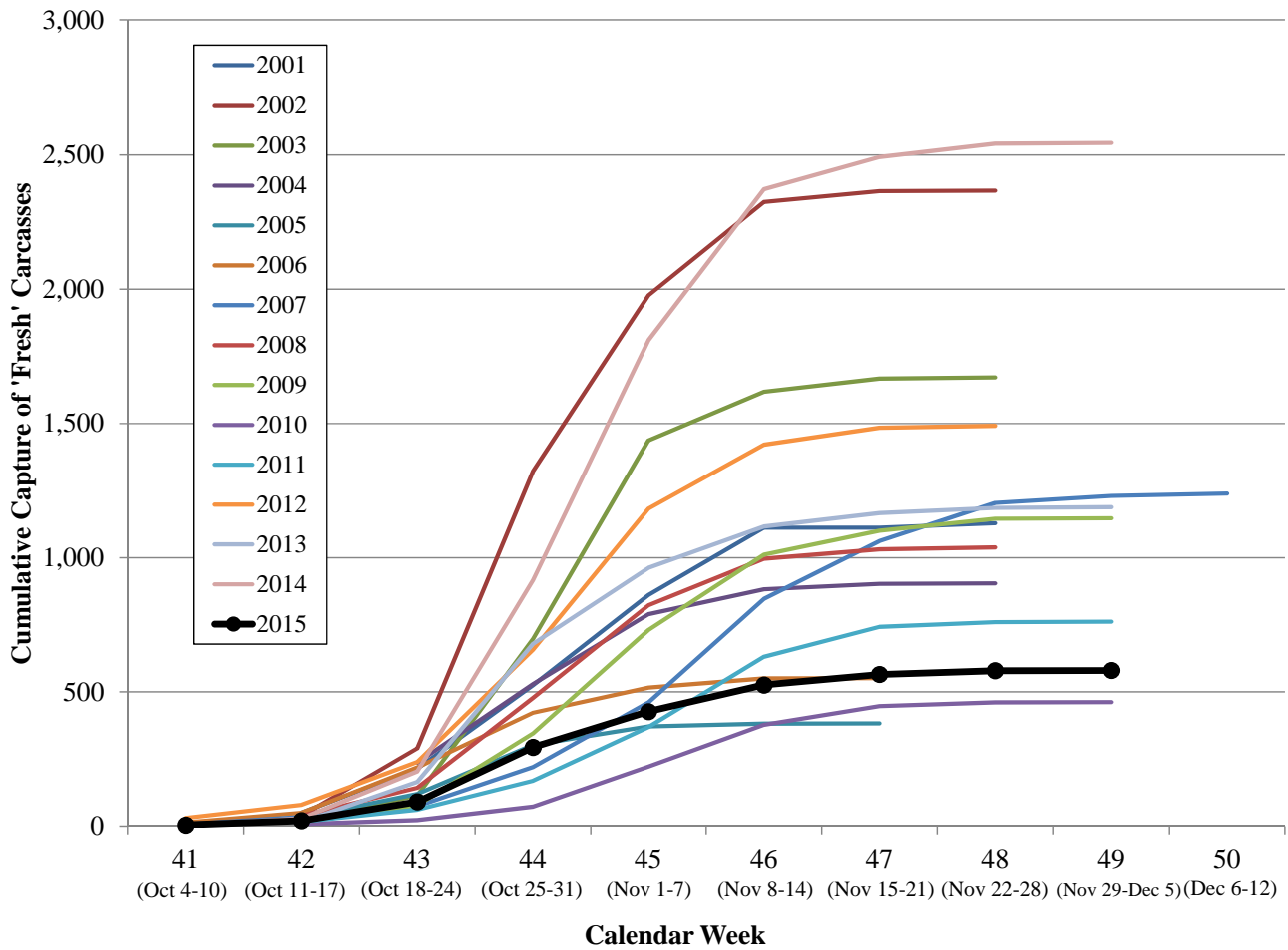


Figure 1. Cumulative count of 'fresh' (F₁- and D₂-condition) fall Chinook Salmon carcasses in the Klamath River from Iron Gate Dam to the Shasta River confluence, 2001-2015. We use the number of fresh carcasses as a relative comparator of annual run size. These counts have not yet been expanded into an estimate of escapement.

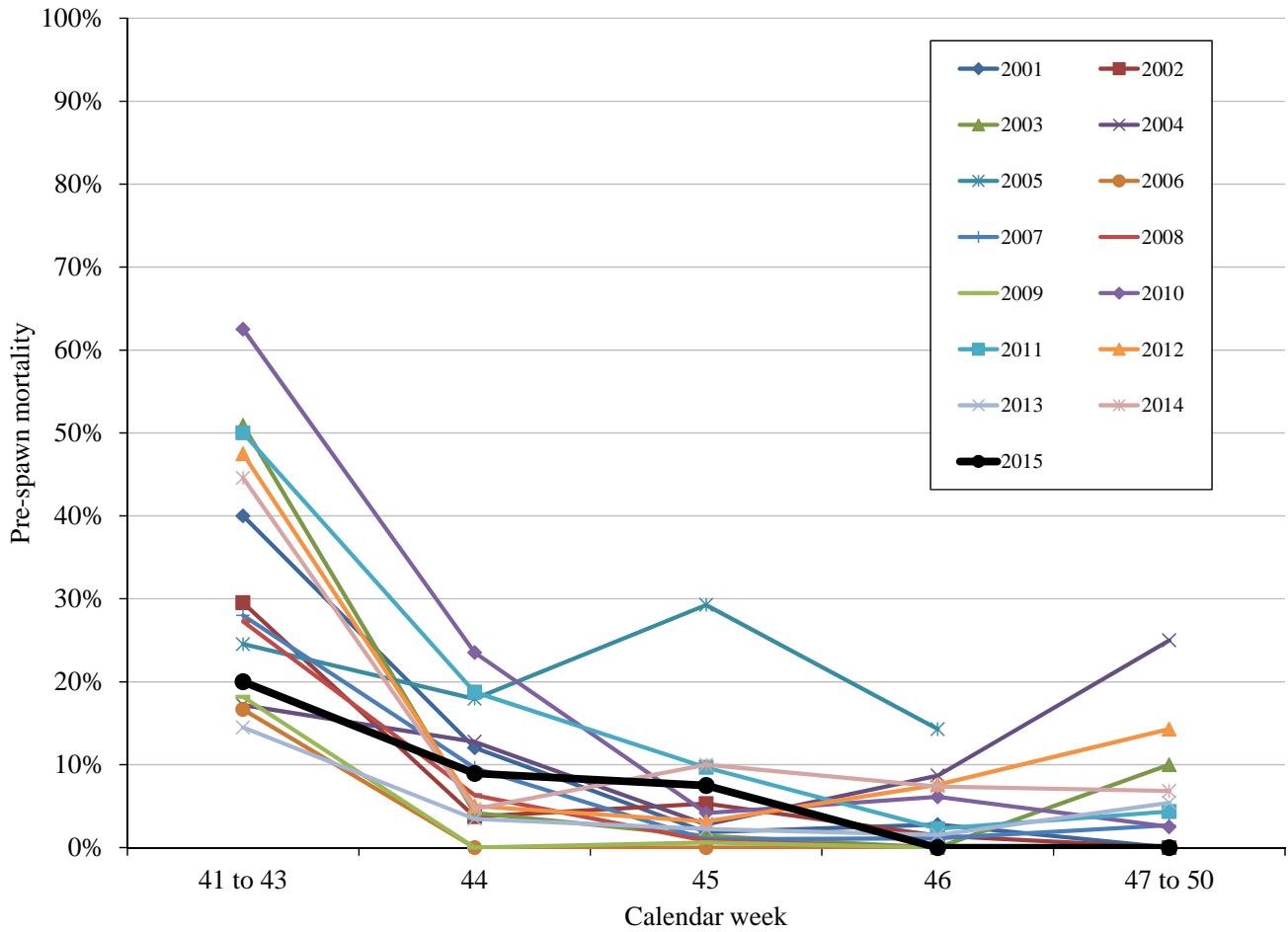


Figure 2. Weekly pre-spawn mortality from F1-condition female Chinook Salmon carcasses, Klamath River surveys 2001 to 2015. Calendar weeks 41 to 43 and 47 to 50 were combined since sample sizes were typically low in calendar weeks 41, 42, 48, 49, and 50, if surveyed. See Figure 1 for the dates defining this year's calendar weeks.

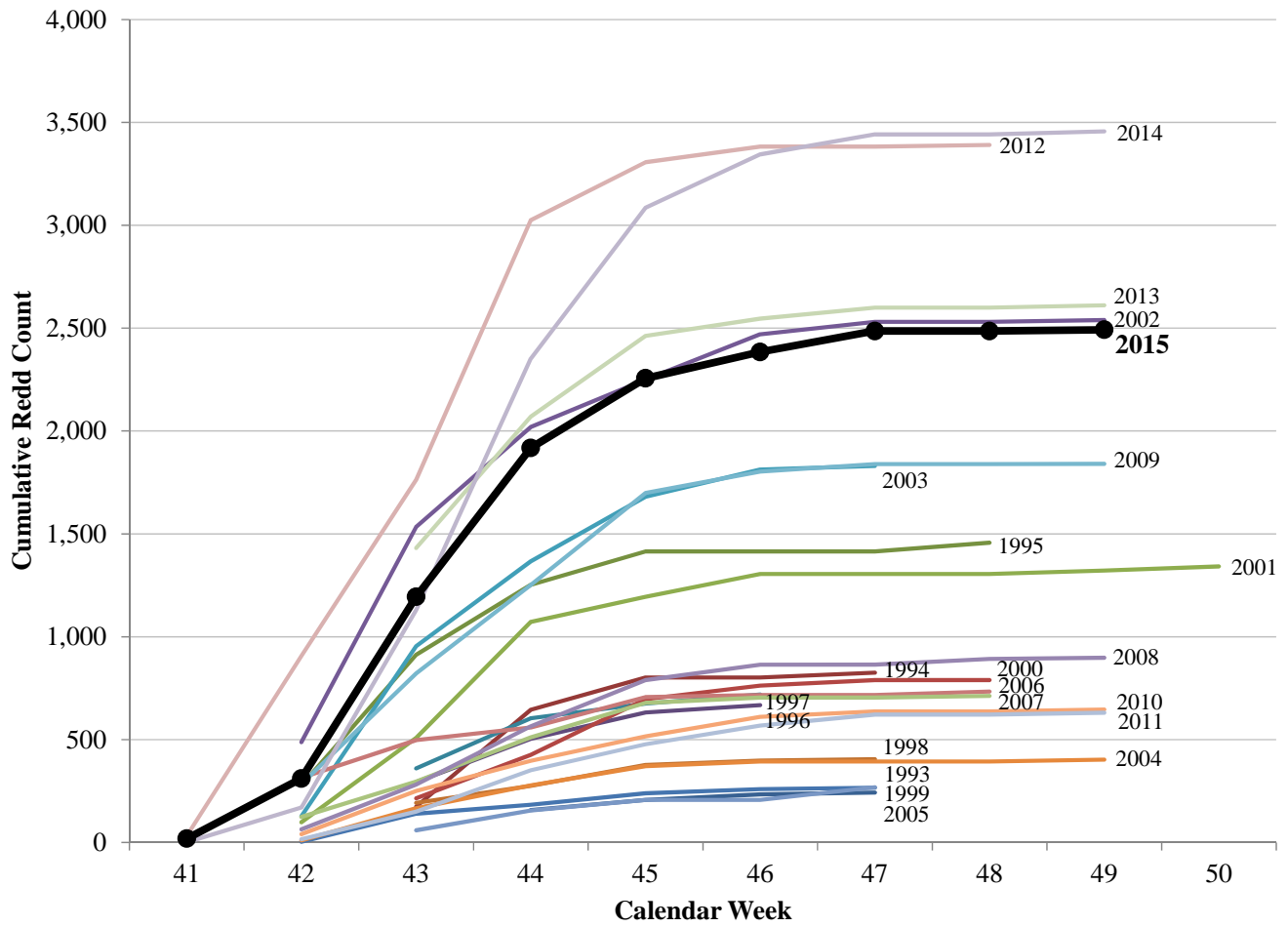


Figure 3. Cumulative count of fall Chinook Salmon redds in the mainstem Klamath River from Shasta River to Indian Creek, 1993-2015. See Figure 1 for the dates defining this year's calendar weeks.