

Silvio O. Conte

National Fish and Wildlife Refuge

Hunting and Fishing in Connecticut – Brochure/Permit



Division/Unit	Open/Closed to Hunting	Open/Closed to Fishing
Deadman's Swamp Unit (Boat access only – no access from Nooks Hill Road)	Open (79 acres)	Connecticut River
Salmon River Division (Salmon Cove property is boat access only)	Open (912 acres) Closed (84 acres)	Connecticut River
Whalebone Cove Division	Open (103 acres) Closed (45 acres)	Connecticut River
Maromas Division	Open (23 acres)	
Roger Tory Peterson Unit	Open (56 acres)	

We allow hunting and fishing at the above divisions and units on the refuge subject to certain conditions.

Please refer to the Connecticut Hunting and Trapping Guide for clothing requirements, definition of approved weapons, bag limits, license requirements, and other important information. Contact the Connecticut Department of Energy and Environmental Protection at (203) 424-3011 or check their web page at: <https://portal.ct.gov/DEEP/Hunting/CT-Hunting-and-Trapping>

Allowed Species

Migratory Game: Migratory bird species including ducks, geese, crows, rail, snipe, and American woodcock can be hunted during the migratory game bird hunting season. All refuge lands open to migratory bird hunting will be in accordance with applicable State migratory bird regulations.

Upland Game: Coyote, fox, raccoon, opossum, woodchuck, gray squirrel, snowshoe hare, cottontail rabbit, pheasant, quail, woodcock, European hare, Hungarian partridge, and ruffed grouse can be hunted according to State regulations throughout the refuge, with the exception of no night hunting or the use of electronic calls.

Big Game: Big game (White-tailed deer and wild turkey) will be taken according to the State of Connecticut regulations throughout the refuge, with the exception of refuge specific regulations listed below.

Fish: Recreational fishing is conducted under the State of Connecticut regulations for inland fisheries with some additional restrictions to protect fish, wildlife, and habitat, and to reduce potential public use conflicts. During the seasons specified in the fishing regulations established annually by the State, fishing can occur between one half-hour before legal sunrise to one half-hour after legal sunset.

Access

Access to refuge lands for hunting is from public roads and adjoining public lands and water.

Permits

A signed copy of this brochure must be kept with you at all times while hunting.

Reminders

- Refuge land is federally owned public property and follows the regulations that govern state properties unless otherwise noted.
- No centerfire rifle or revolver (Deer Only)
- No Sunday hunting during any season.
- No archery hunting on refuge lands during the January archery season.
- Refuge lands are closed to all night hunting.
- No recorded or electronic calls can be used.
- We allow the use of dogs when hunting waterfowl and upland game species.
- We prohibit launching of motorboats from the refuge.
- No baiting is allowed on refuge lands.
- We prohibit the use of reptiles and amphibians as bait for fishing.

For more information, contact:

Silvio O. Conte National Fish and Wildlife Refuge
69 Moody Bridge Rd
Hadley, MA (413) 687-3588 x5005
<https://www.fws.gov/refuge/silvio-o-conte>

Federal Relay Service
for the deaf and hard-of-hearing
1 800/877 8339

U.S. Fish & Wildlife Service
1 800/344 WILD
<http://www.fws.gov>
September 2025

Hunt Brochure and Permit

I have read and agree to comply with the refuge rules and regulations described in this hunt brochure. Permit valid for current season only.

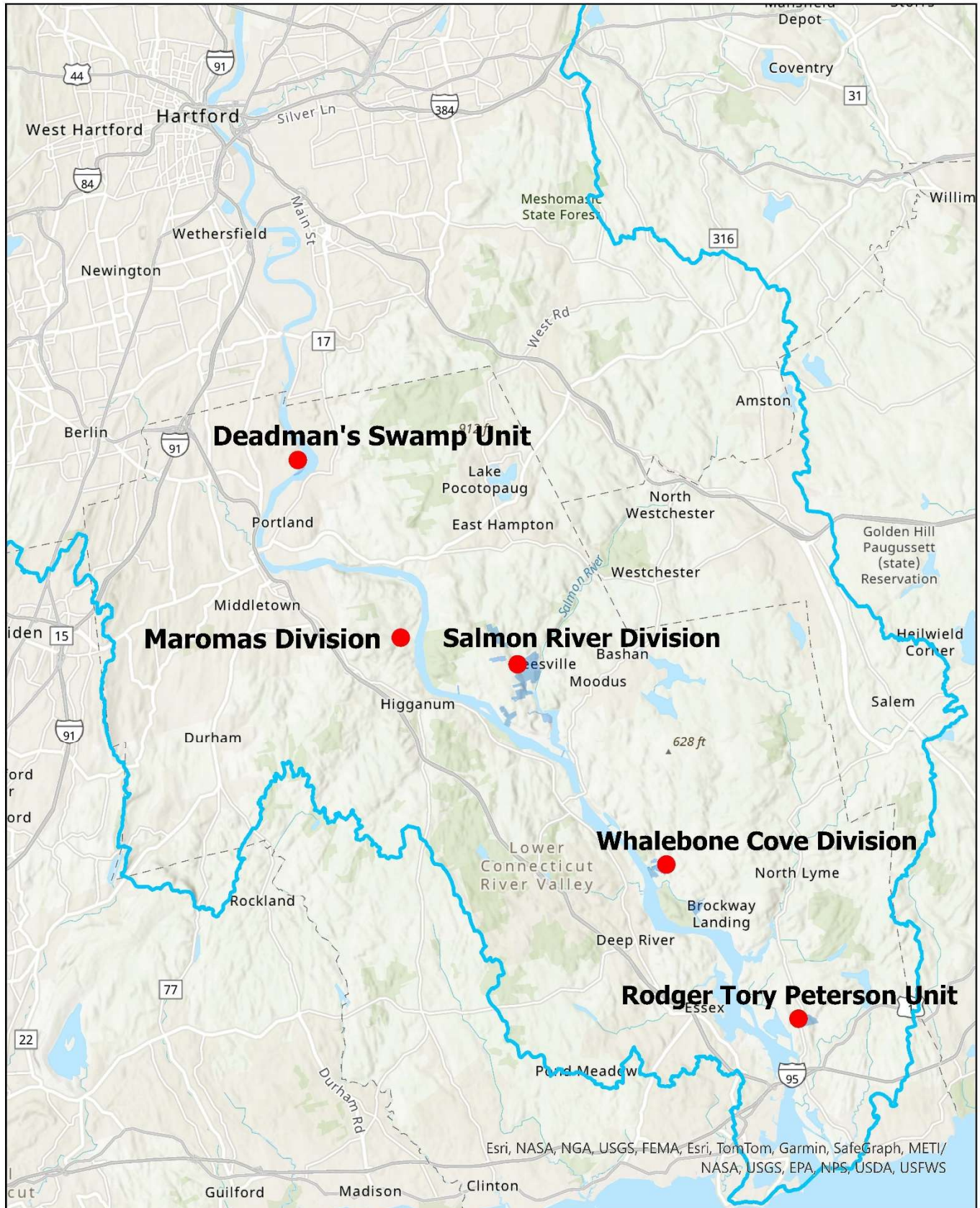
Signature _____ Date _____
A signed copy must be kept with you while hunting.



U.S. Fish and Wildlife Service

Connecticut Divisions/Units

Silvio O. Conte National Fish and Wildlife Refuge



3 1.5 0 3 6 9 12 Miles