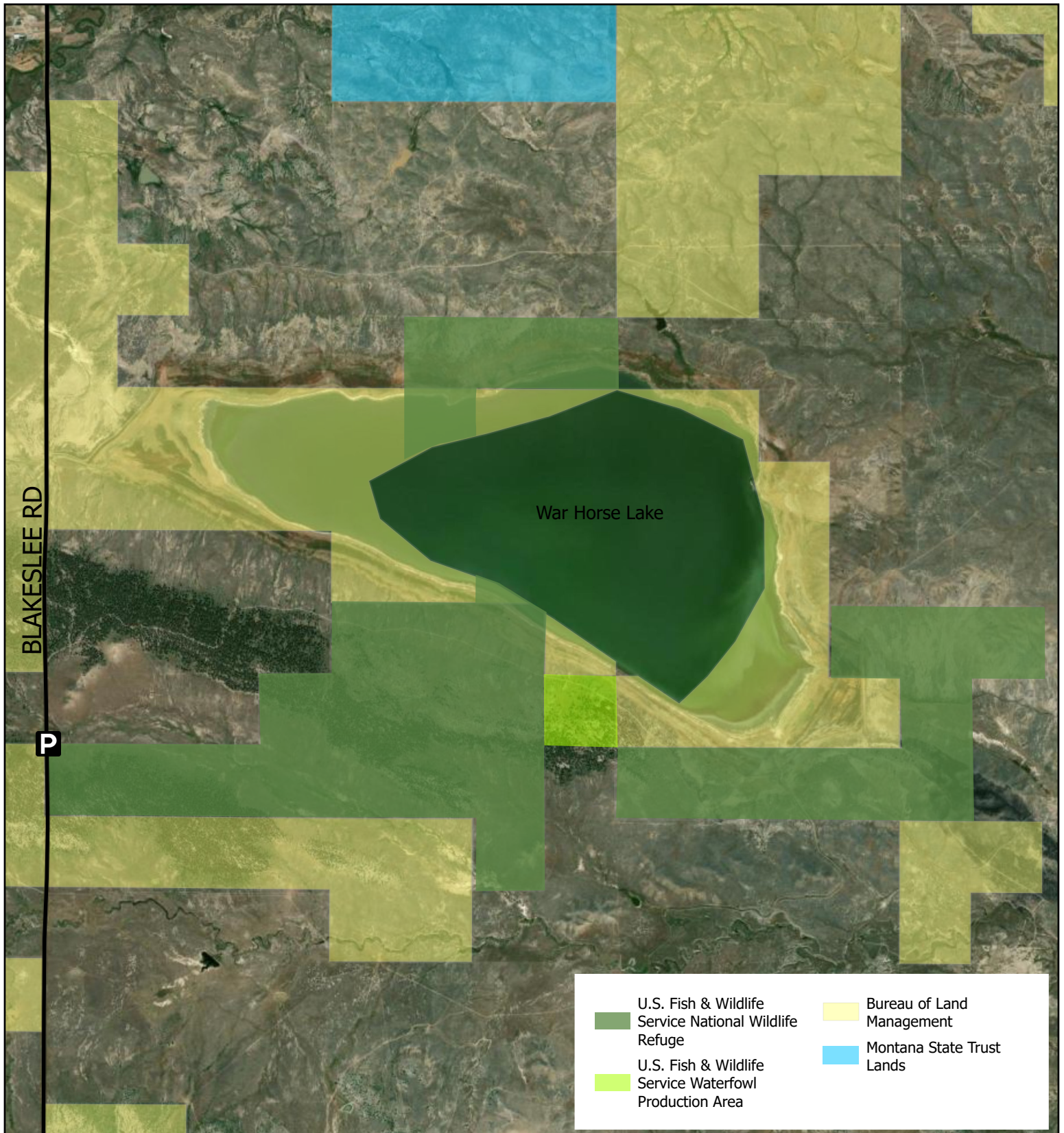


War Horse NWR - War Horse Unit & WPA



N

Georeferenced satellite imagery map showing the location of War Horse National Wildlife Refuge - War Horse Unit (1,118-ac) and War Horse Waterfowl Production Area (40-ac) located in Petroleum County, Montana. This Refuge Unit and WPA lie within, are a component of (WPA), and managed by the Charles M. Russell Wetland Management District.

0 0.45 0.9 1.8 2.7 3.6 Miles