



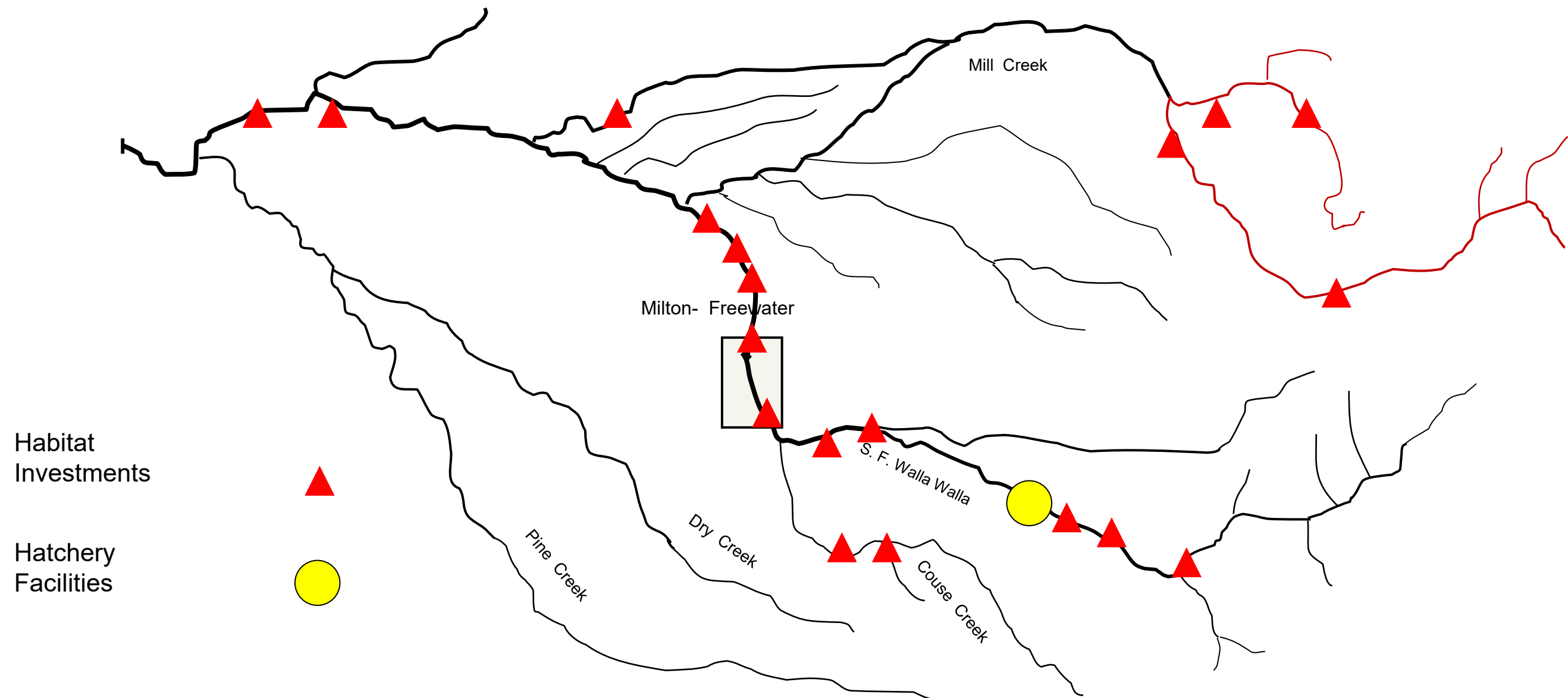
CONFEDERATED TRIBES OF THE
UMATILLA INDIAN RESERVATION

?Imtwaha Fish Hatchery

Jen Krajcik

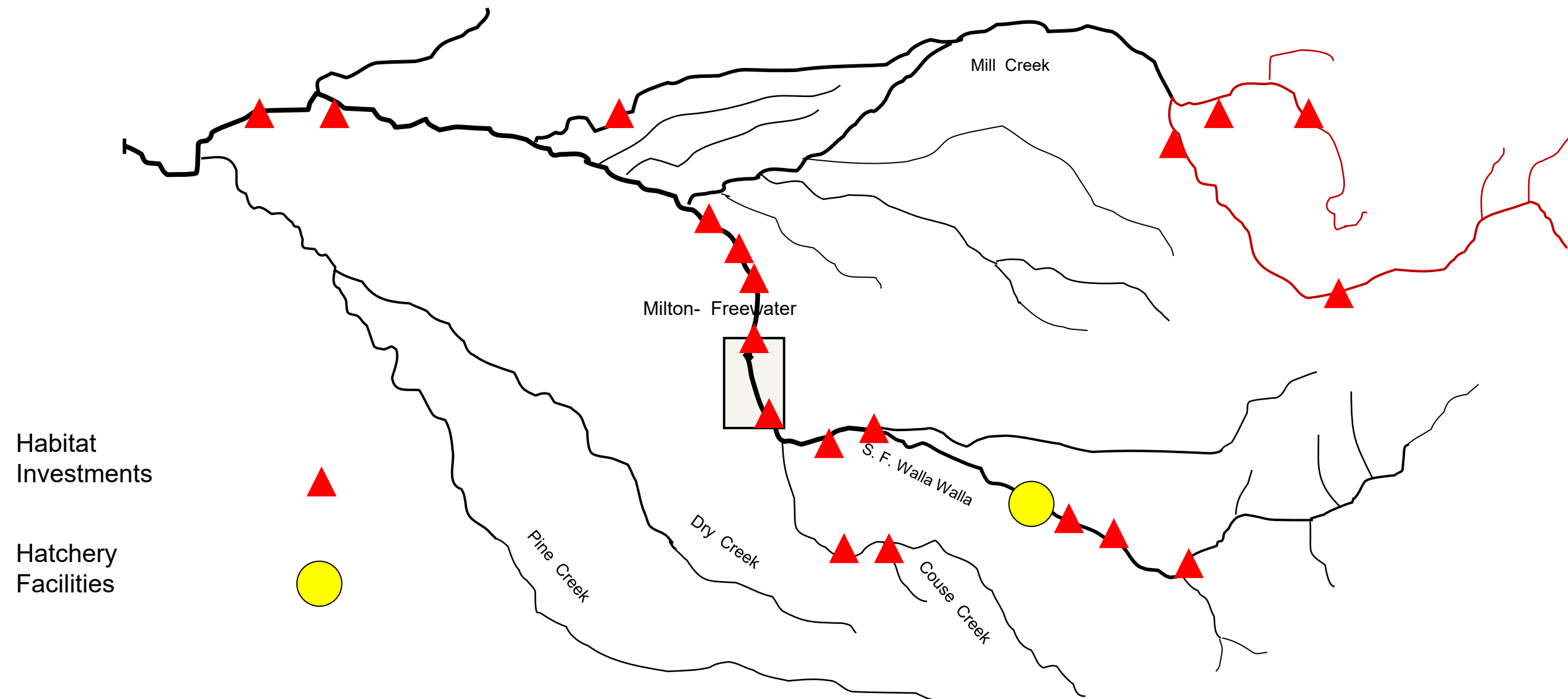
Artificial Production Supervisor

Why do we need a Hatchery program in the Walla Walla Basin?



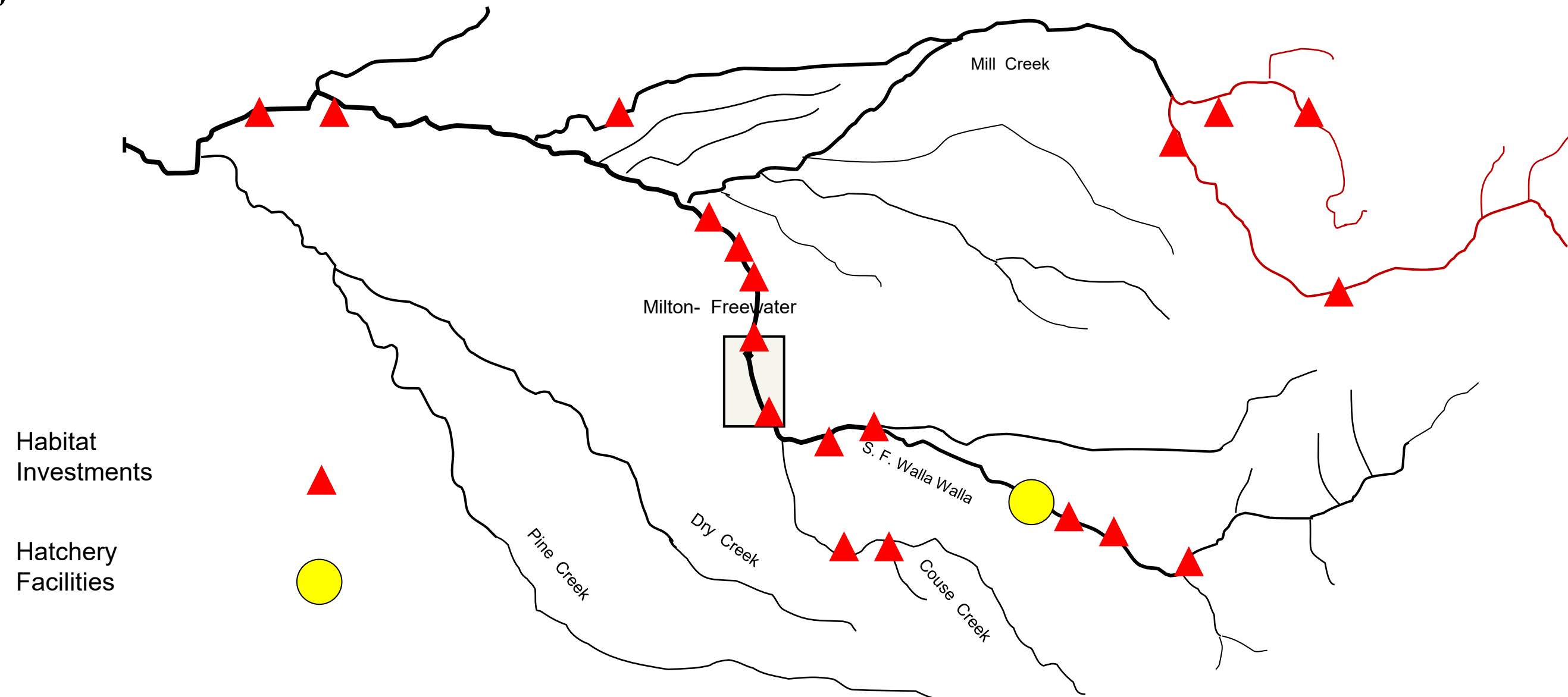
Why do we need a Hatchery program in the Walla Walla Basin?

- Spring Chinook extirpated from basin



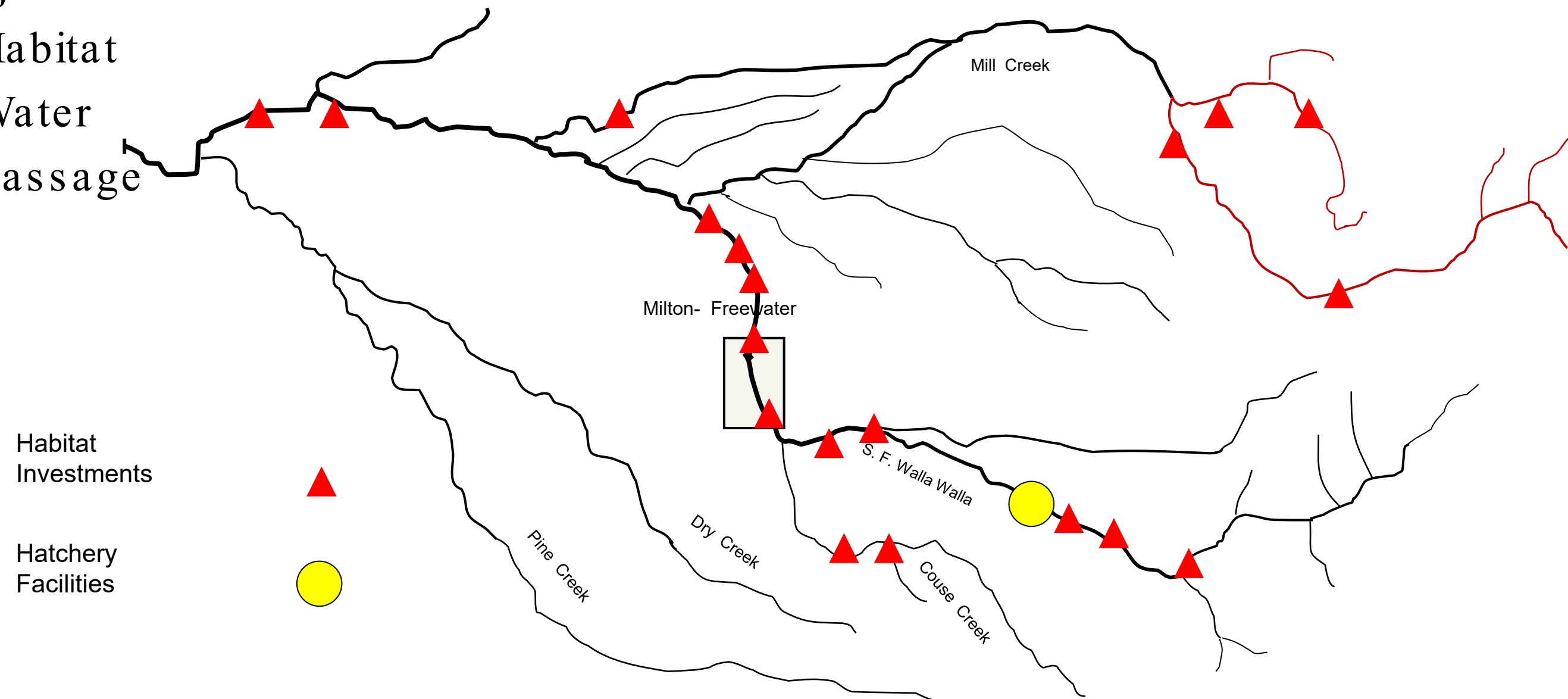
Why do we need a Hatchery program in the Walla Walla Basin?

- Spring Chinook extirpated from basin
- Major hurdles to reintroduction



Why do we need a Hatchery program in the Walla Walla Basin?

- Spring Chinook extirpated from basin
- Major hurdles to reintroduction
 - Habitat
 - Water
 - Passage



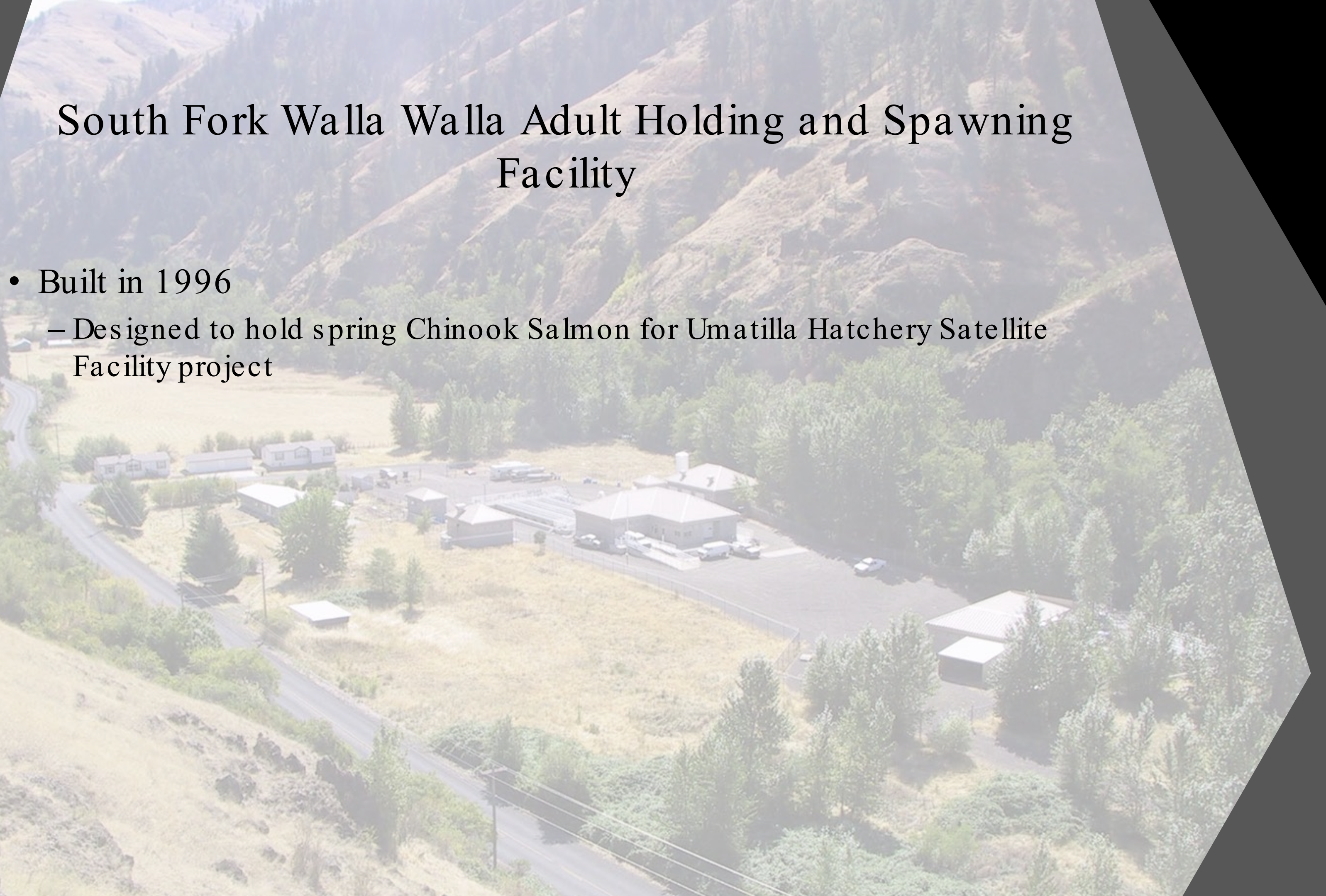
South Fork Walla Walla Adult Holding and Spawning Facility

- Built in 1996



South Fork Walla Walla Adult Holding and Spawning Facility

- Built in 1996
 - Designed to hold spring Chinook Salmon for Umatilla Hatchery Satellite Facility project



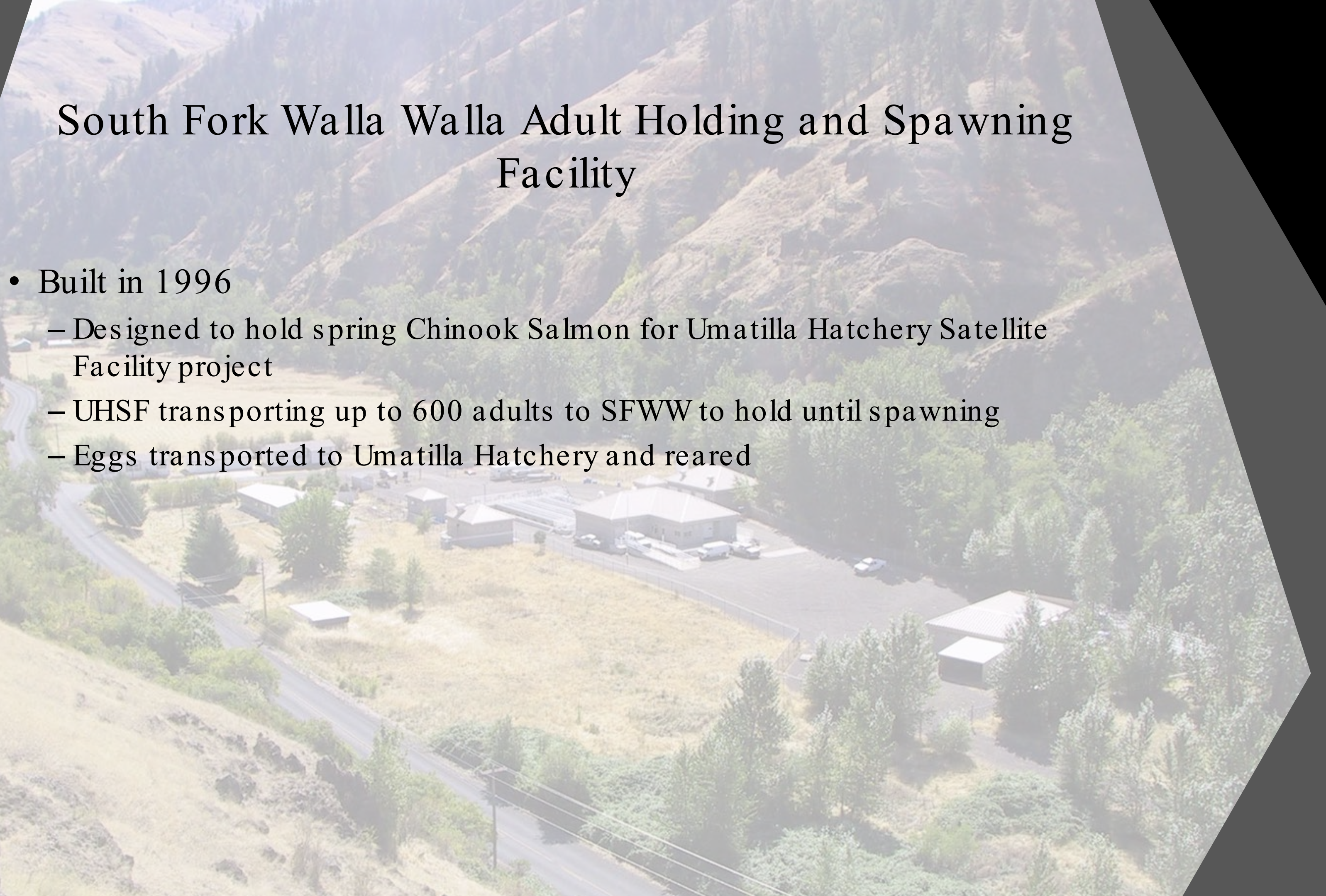
South Fork Walla Walla Adult Holding and Spawning Facility

- Built in 1996
 - Designed to hold spring Chinook Salmon for Umatilla Hatchery Satellite Facility project
 - UHSF transporting up to 600 adults to SFWW to hold until spawning



South Fork Walla Walla Adult Holding and Spawning Facility

- Built in 1996
 - Designed to hold spring Chinook Salmon for Umatilla Hatchery Satellite Facility project
 - UHSF transporting up to 600 adults to SFWW to hold until spawning
 - Eggs transported to Umatilla Hatchery and reared



Walla Walla Master Plan

WALLA WALLA SPRING CHINOOK HATCHERY MASTER PLAN

Prepared by the
Confederated Tribes of the Umatilla Indian Reservation

and

Jones and Stokes



August 2008

Walla Walla Master Plan

- Completed in 2008
 - Attempted in 1993 and 1998

WALLA WALLA SPRING CHINOOK HATCHERY MASTER PLAN

Prepared by the
Confederated Tribes of the Umatilla Indian Reservation

and

Jones and Stokes



August 2008

Walla Walla Master Plan

- Completed in 2008
 - Attempted in 1993 and 1998
- Blueprint for how to bring fish back to Walla Walla River

WALLA WALLA SPRING CHINOOK HATCHERY MASTER PLAN

Prepared by the
Confederated Tribes of the Umatilla Indian Reservation

and

Jones and Stokes



August 2008

Walla Walla Master Plan

- Completed in 2008
 - Attempted in 1993 and 1998
- Blueprint for how to bring fish back to Walla Walla River
 - Habitat
 - Adult outplants
 - Smolt supplementation in Phases

WALLA WALLA SPRING CHINOOK HATCHERY MASTER PLAN

Prepared by the
Confederated Tribes of the Umatilla Indian Reservation

and

Jones and Stokes



August 2008

Walla Walla Master Plan

- Completed in 2008
 - Attempted in 1993 and 1998
- Blueprint for how to bring fish back to Walla Walla River
 - Habitat
 - Adult outplants
 - Smolt supplementation in Phases
 - Phase I—Local adaptation, Natural spawning, Harvest if run size allows
 - Phase II—Harvest augmentation, Integrate program
 - Phase III—Integrated harvest and Demographic safety net

WALLA WALLA SPRING CHINOOK HATCHERY MASTER PLAN

Prepared by the
Confederated Tribes of the Umatilla Indian Reservation

and

Jones and Stokes



August 2008

Walla Walla Master Plan

- Completed in 2008
 - Attempted in 1993 and 1998
- Blueprint for how to bring fish back to Walla Walla River
 - Habitat
 - Adult outplants
 - Smolt supplementation in Phases
 - Phase I—Local adaptation, Natural spawning, Harvest if run size allows
 - Phase II—Harvest augmentation, Integrate program
 - Phase III—Integrated harvest and Demographic safety net
- Basis for current implementation

WALLA WALLA SPRING CHINOOK HATCHERY MASTER PLAN

Prepared by the
Confederated Tribes of the Umatilla Indian Reservation

and

Jones and Stokes



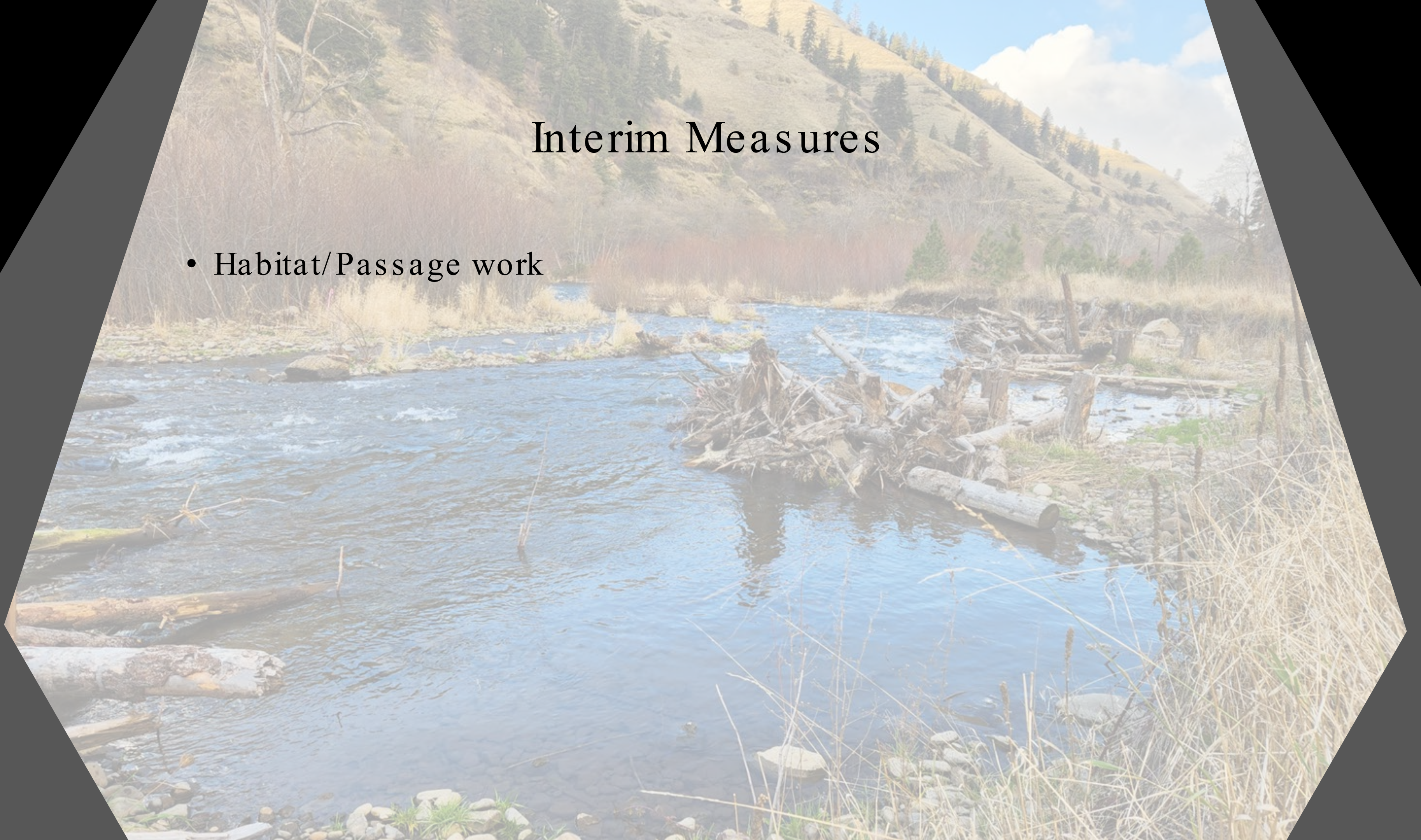
August 2008

Interim Measures



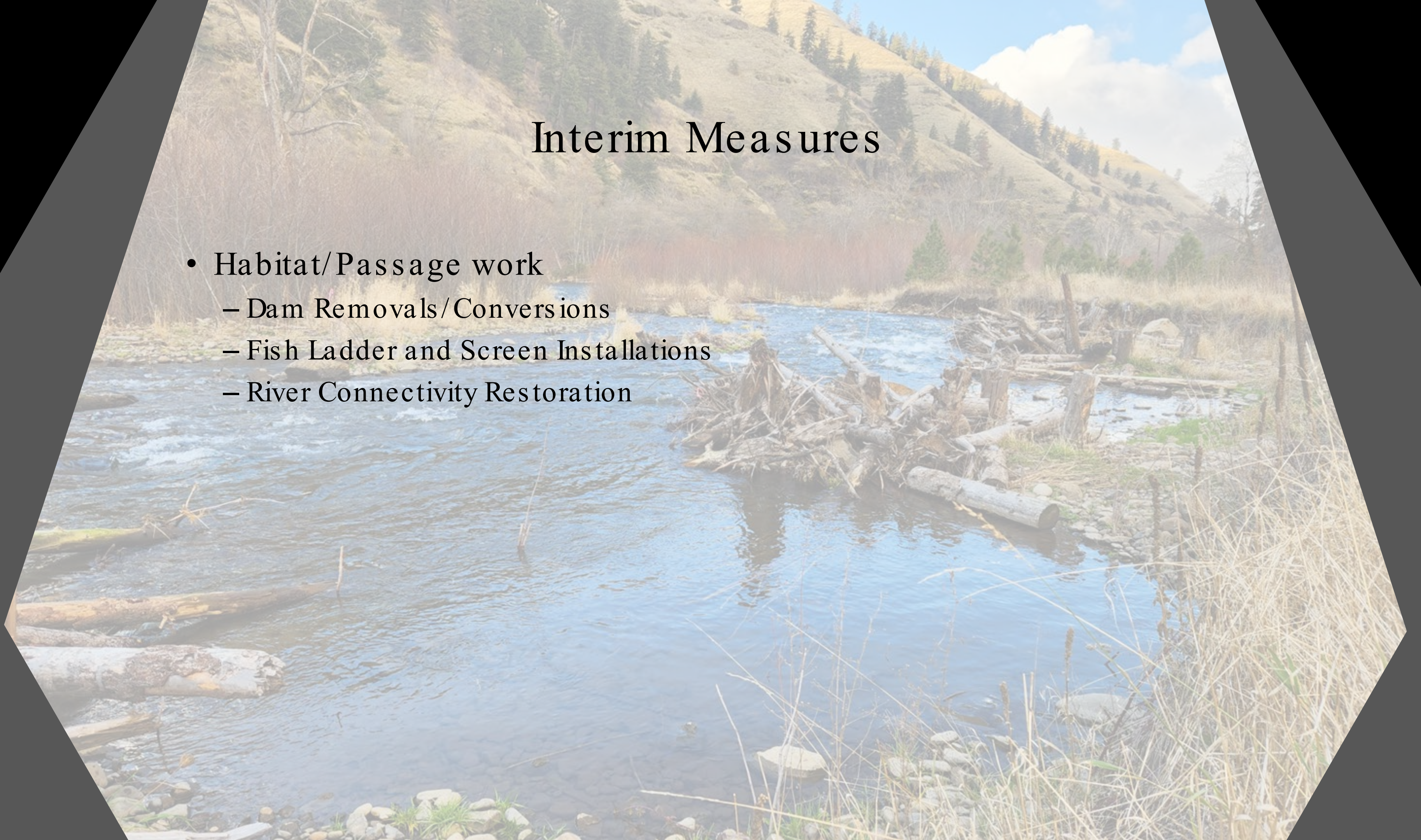
Interim Measures

- Habitat/Passage work



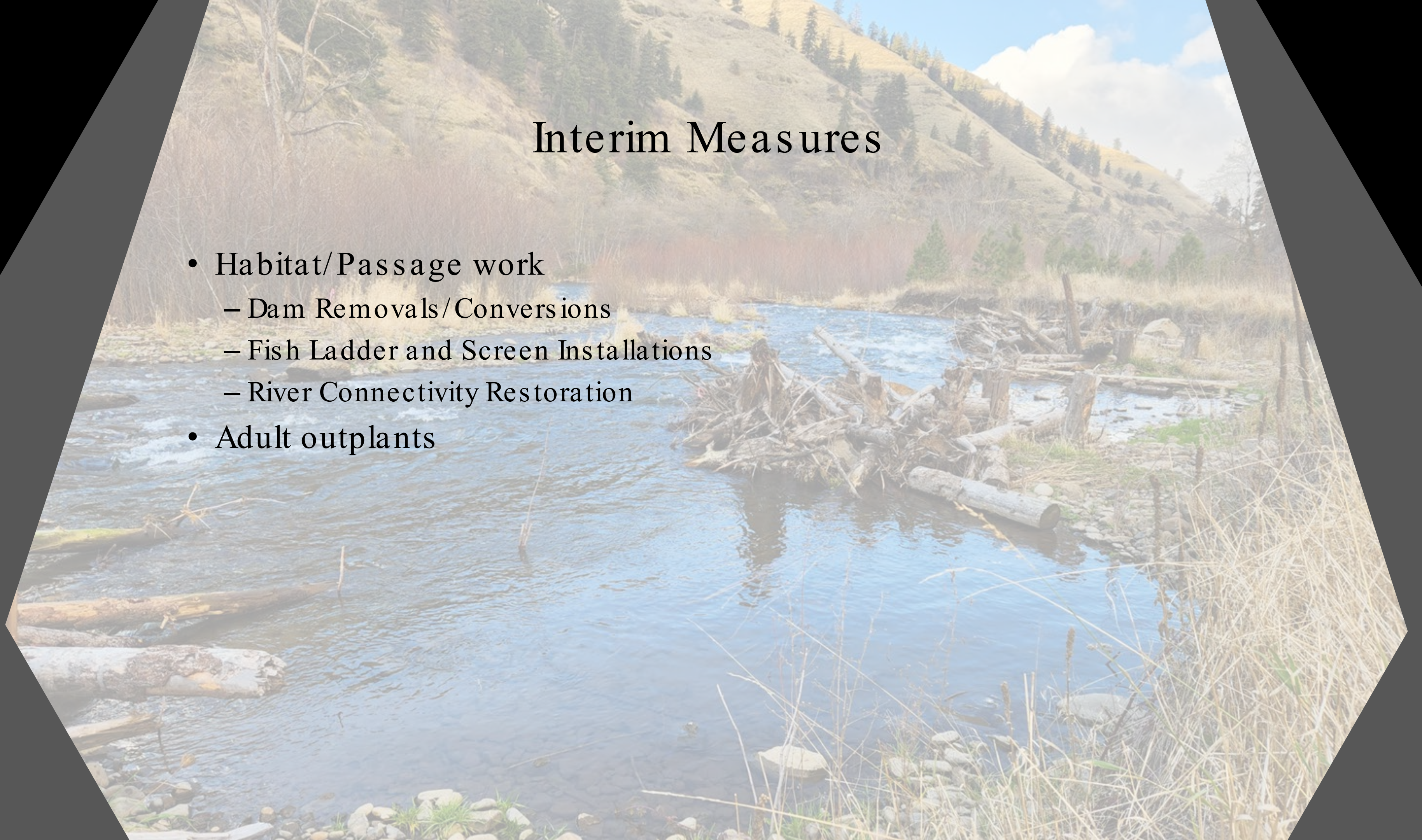
Interim Measures

- Habitat/Passage work
 - Dam Removals/Conversions
 - Fish Ladder and Screen Installations
 - River Connectivity Restoration



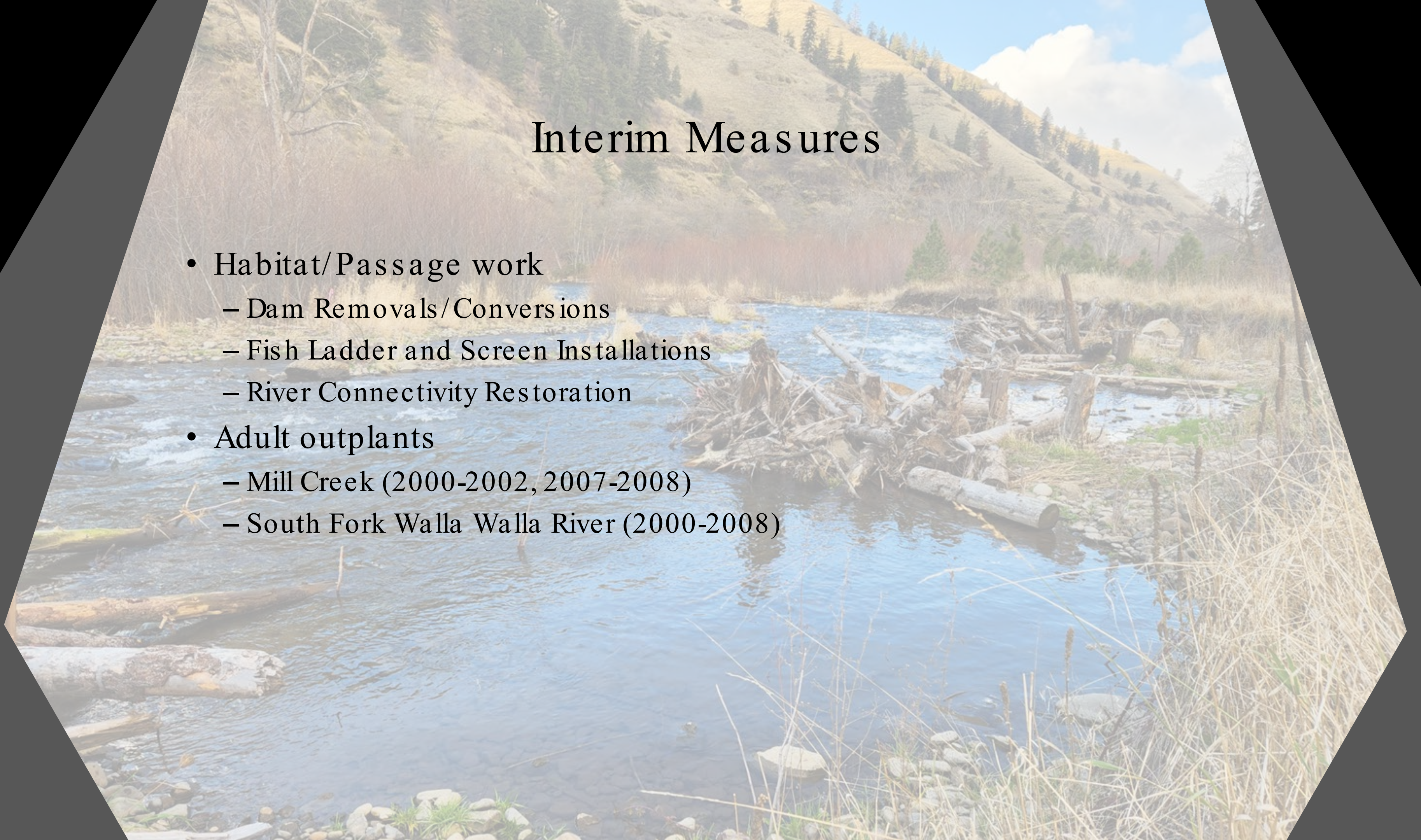
Interim Measures

- Habitat/Passage work
 - Dam Removals/Conversions
 - Fish Ladder and Screen Installations
 - River Connectivity Restoration
- Adult outplants



Interim Measures

- Habitat/Passage work
 - Dam Removals/Conversions
 - Fish Ladder and Screen Installations
 - River Connectivity Restoration
- Adult outplants
 - Mill Creek (2000-2002, 2007-2008)
 - South Fork Walla Walla River (2000-2008)



Interim Measures

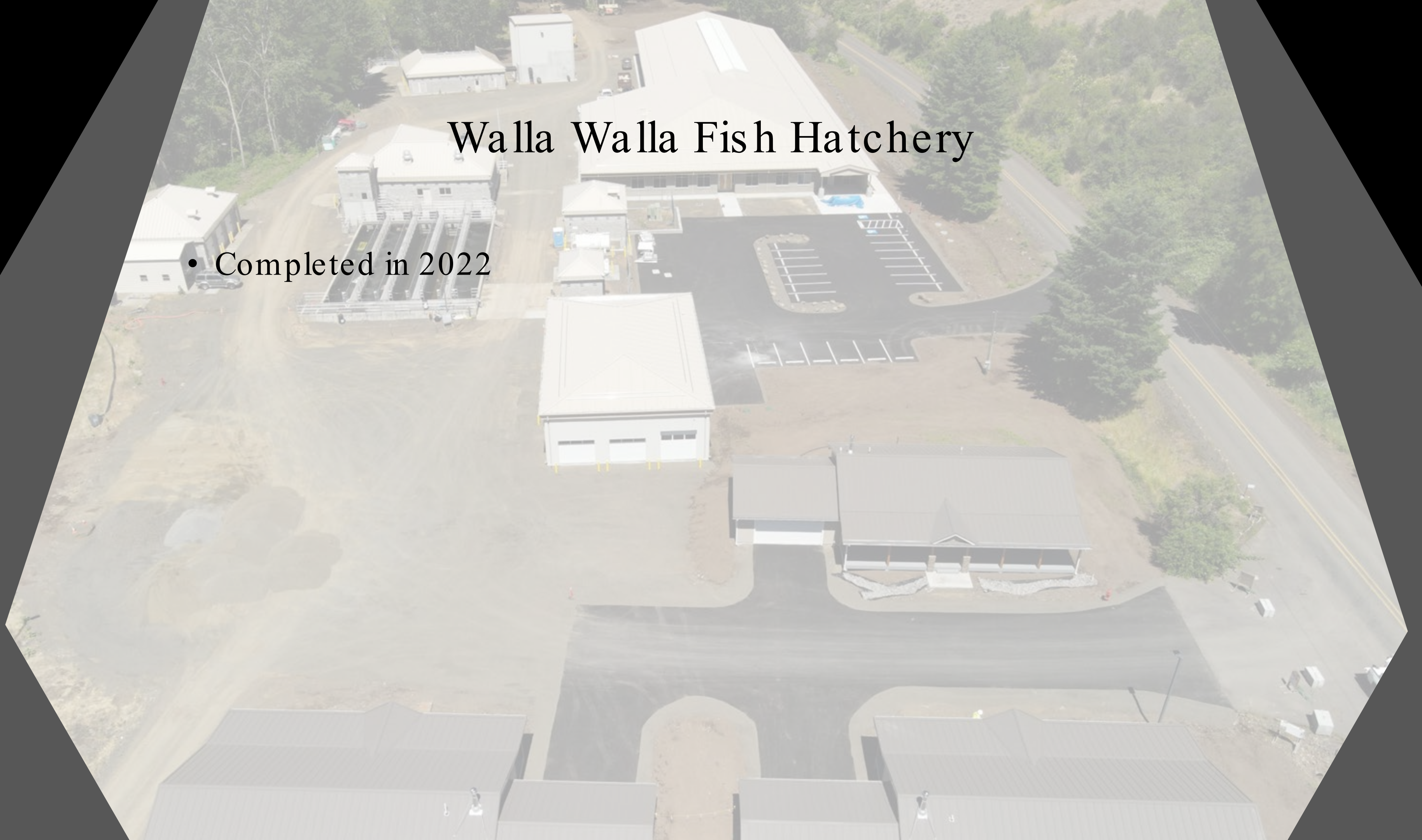
- Habitat/Passage work
 - Dam Removals/Conversions
 - Fish Ladder and Screen Installations
 - River Connectivity Restoration
- Adult outplants
 - Mill Creek (2000-2002, 2007-2008)
 - South Fork Walla Walla River (2000-2008)
- Smolt Releases

Interim Measures

- Habitat/Passage work
 - Dam Removals/Conversions
 - Fish Ladder and Screen Installations
 - River Connectivity Restoration
- Adult outplants
 - Mill Creek (2000-2002, 2007-2008)
 - South Fork Walla Walla River (2000-2008)
- Smolt Releases
 - South Fork Walla Walla River (2005-2020)

Walla Walla Fish Hatchery

- Completed in 2022





Walla Walla Fish Hatchery

- Completed in 2022
- Funded by BPA



Walla Walla Fish Hatchery

- Completed in 2022
- Funded by BPA
 - \$23.7 M to build rearing/office building, replace houses



Walla Walla Fish Hatchery

- Completed in 2022
- Funded by BPA
 - \$23.7 M to build rearing/office building, replace houses
- Renamed in 2024: ʔImtwaha Fish Hatchery



Walla Walla Fish Hatchery

- Completed in 2022
- Funded by BPA
 - \$23.7 M to build rearing/office building, replace houses
- Renamed in 2024: ʔImtwaha Fish Hatchery
 - Cayuse Nez Perce place name for South fork of the Walla Walla River
 - “This river provided fishing for salmon and lamprey used by Cayuse and Walla Walla people. Spears and dip nets were used”



Imtwaha Fish Hatchery

- BY 20



²Imtwaha Fish Hatchery

- BY 20
 - Included 250k smolts from Carson stock direct released
 - 150k smolts brought in August 2021 and held over winter



²Imtwaha Fish Hatchery

- BY 20
 - Included 250k smolts from Carson stock direct released
 - 150k smolts brought in August 2021 and held over winter
- BY 21



³Imtwaha Fish Hatchery

- BY 20
 - Included 250k smolts from Carson stock direct released
 - 150k smolts brought in August 2021 and held over winter
- BY 21
 - Mostly received as eyed eggs from Carson NFH, Lyons Ferry, and Little White Salmon NFH
 - Released in 2023
 - First 4 year old returns this year



³Imtwaha Fish Hatchery

- BY 20
 - Included 250k smolts from Carson stock direct released
 - 150k smolts brought in August 2021 and held over winter
- BY 21
 - Mostly received as eyed eggs from Carson NFH, Lyons Ferry, and Little White Salmon NFH
 - Released in 2023
 - First 4 year old returns this year
- BY 22



³Imtwaha Fish Hatchery

- BY 20
 - Included 250k smolts from Carson stock direct released
 - 150k smolts brought in August 2021 and held over winter
- BY 21
 - Mostly received as eyed eggs from Carson NFH, Lyons Ferry, and Little White Salmon NFH
 - Released in 2023
 - First 4 year old returns this year
- BY 22
 - Mix of adults from Umatilla River, adults collected in Walla Walla River, and eyed eggs from Carson NFH
 - Released in 2024



³Imtwaha Fish Hatchery

- BY 20
 - Included 250k smolts from Carson stock direct released
 - 150k smolts brought in August 2021 and held over winter
- BY 21
 - Mostly received as eyed eggs from Carson NFH, Lyons Ferry, and Little White Salmon NFH
 - Released in 2023
 - First 4 year old returns this year
- BY 22
 - Mix of adults from Umatilla River, adults collected in Walla Walla River, and eyed eggs from Carson NFH
 - Released in 2024
- BY 23



³Imtwaha Fish Hatchery

- BY 20
 - Included 250k smolts from Carson stock direct released
 - 150k smolts brought in August 2021 and held over winter
- BY 21
 - Mostly received as eyed eggs from Carson NFH, Lyons Ferry, and Little White Salmon NFH
 - Released in 2023
 - First 4 year old returns this year
- BY 22
 - Mix of adults from Umatilla River, adults collected in Walla Walla River, and eyed eggs from Carson NFH
 - Released in 2024
- BY 23
 - Adults from Umatilla River and eyed eggs from Little White Salmon NFH
 - Released in 2025



³Imtwaha Fish Hatchery

- BY 20
 - Included 250k smolts from Carson stock direct released
 - 150k smolts brought in August 2021 and held over winter
- BY 21
 - Mostly received as eyed eggs from Carson NFH, Lyons Ferry, and Little White Salmon NFH
 - Released in 2023
 - First 4 year old returns this year
- BY 22
 - Mix of adults from Umatilla River, adults collected in Walla Walla River, and eyed eggs from Carson NFH
 - Released in 2024
- BY 23
 - Adults from Umatilla River and eyed eggs from Little White Salmon NFH
 - Released in 2025
- BY 24



³Imtwaha Fish Hatchery

- BY 20
 - Included 250k smolts from Carson stock direct released
 - 150k smolts brought in August 2021 and held over winter
- BY 21
 - Mostly received as eyed eggs from Carson NFH, Lyons Ferry, and Little White Salmon NFH
 - Released in 2023
 - First 4 year old returns this year
- BY 22
 - Mix of adults from Umatilla River, adults collected in Walla Walla River, and eyed eggs from Carson NFH
 - Released in 2024
- BY 23
 - Adults from Umatilla River and eyed eggs from Little White Salmon NFH
 - Released in 2025
- BY 24
 - Adults from Walla Walla River and eyed eggs from Little White Salmon NFH

Current Situation

- Still in Phase I



Current Situation

- Still in Phase I
 - pNOB is 10%, no harvest
 - Successfully producing smolt goal
 - Still require help from USFWS and UHSF
 - Are allowing for natural spawning



Current Situation

- Still in Phase I
 - pNOB is 10%, no harvest
 - Successfully producing smolt goal
 - Still require help from USFWS and UHSF
 - Are allowing for natural spawning
- Monitoring program with CTUIR M&E



Current Situation

- Still in Phase I
 - pNOB is 10%, no harvest
 - Successfully producing smolt goal
 - Still require help from USFWS and UHSF
 - Are allowing for natural spawning
- Monitoring program with CTUIR M&E
 - Spawning Surveys
 - Smolt trapping
 - Survival estimates
 - Run size estimates



Current Situation

- Still in Phase I
 - pNOB is 10%, no harvest
 - Successfully producing smolt goal
 - Still require help from USFWS and UHSF
 - Are allowing for natural spawning
- Monitoring program with CTUIR M&E
 - Spawning Surveys
 - Smolt trapping
 - Survival estimates
 - Run size estimates
- Utilizing Adaptive Management



Current Situation

- Still in Phase I
 - pNOB is 10%, no harvest
 - Successfully producing smolt goal
 - Still require help from USFWS and UHSF
 - Are allowing for natural spawning
- Monitoring program with CTUIR M&E
 - Spawning Surveys
 - Smolt trapping
 - Survival estimates
 - Run size estimates
- Utilizing Adaptive Management
 - Working with NOAA for smolt assessment
 - Updating CWT numbers to get meaningful information
 - Changing release sites to better manage basin fish returns
 - Planning for future harvest opportunities



Questions?

