



Oregon's Policy Perspective

2025 LSRCP Steelhead Program Review



Oregon Department
of Fish and Wildlife

Impacts to agency and stakeholder goals?



To protect and enhance fish, wildlife and their habitats...



...for the use and enjoyment by present and future generations of Oregonians.



Has the program met expectations?



In-hatchery/in-basin goals vs. adult return goals



Consistent and well-placed mitigation fisheries



Interactions with wild stocks limited in scale and scope



Program provides flexible and efficient management options



Goals for the next 10 years



General goals/aspirations

- Increase and stabilize SAR's
- Contemporize creel monitoring
- Proactively invest in infrastructure



Wallowa Program

- Optimize utility of 'fallbrood' program



Imnaha Program

- Supplementation-oriented goals?



Specific topics



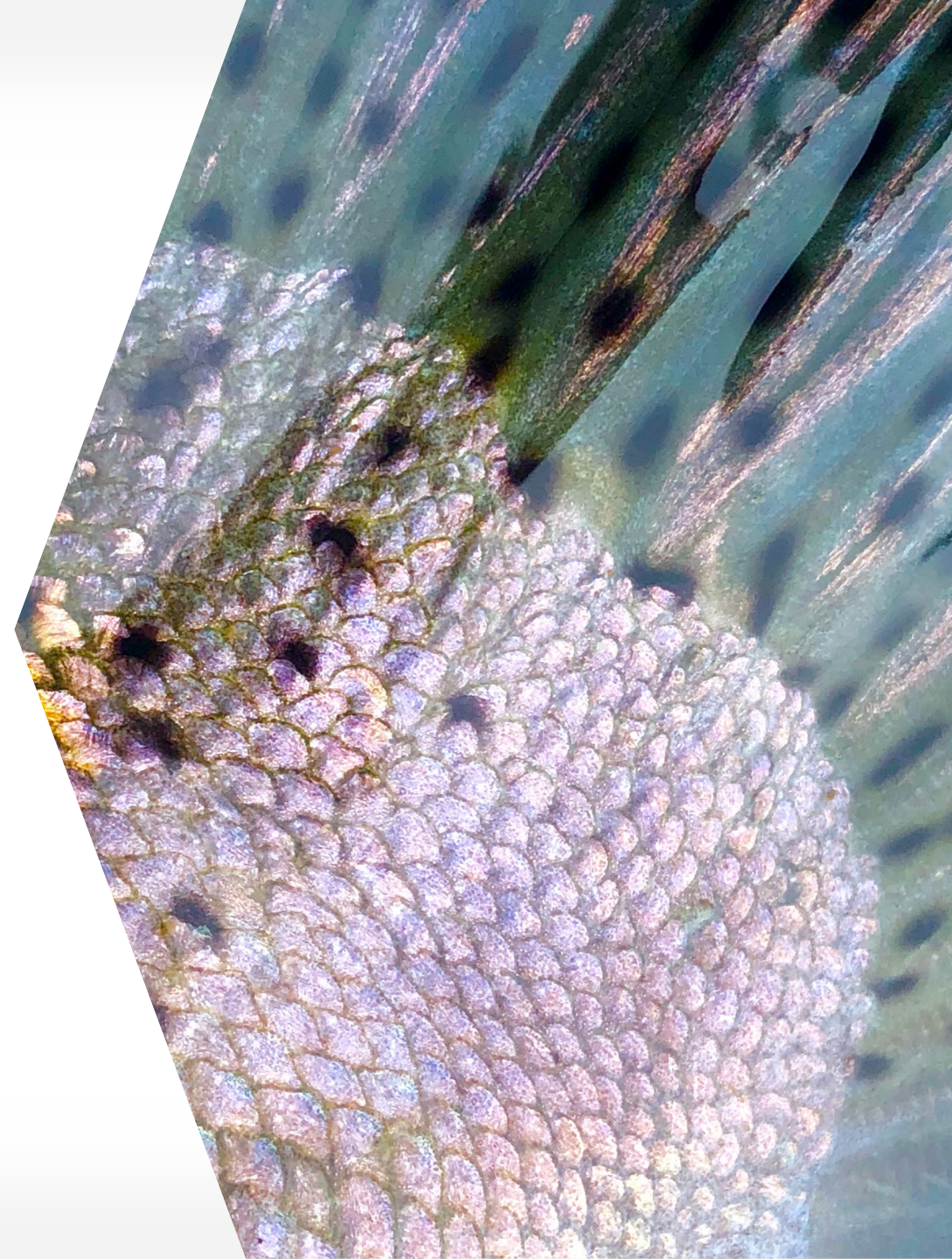
Reciprocal study implementation

- Can study results be fully scaled?
- Risk vs. reward for Oregon
- Burden to WDFW
- Cooperator relationships



Residual smolts

- Low densities, limited scale, consistent with studies in 1990's
- No conservation concern





Thank you!



**Oregon Department
of Fish and Wildlife**