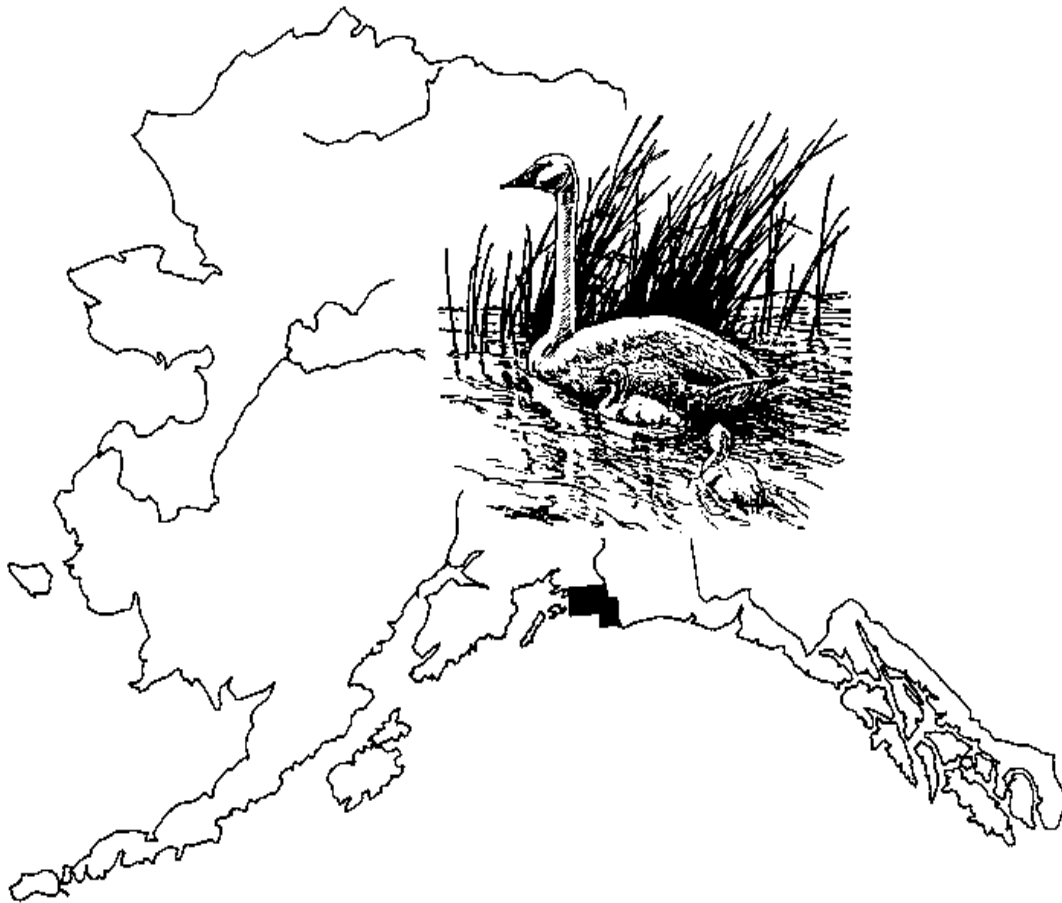


TRUMPETER SWAN SURVEYS ON THE
CHUGACH NATIONAL FOREST
2009



Deborah J. Groves
William W. Larned
Paul D. Anderson

U.S. Fish and Wildlife Service
Division of Migratory Bird Management
Waterfowl Management Branch

May 2010

TRUMPETER SWAN SURVEYS ON THE CHUGACH NATIONAL FOREST - 2009

Deborah J. Groves, U.S. Fish and Wildlife Service, Migratory Bird Management, Waterfowl Management Branch, 3000 Vintage Blvd., Suite 240, Juneau, AK 99801, Debbie_Groves@fws.gov

William W. Larned, U.S. Fish and Wildlife Service, Migratory Bird Management, Waterfowl Management Branch, 43655 K Beach Rd., Soldotna, AK 99669

Paul D. Anderson, U.S. Fish and Wildlife Service, Migratory Bird Management, Waterfowl Management Branch, 1011 E. Tudor Rd., Anchorage, AK 99503

May 2010

ABSTRACT: Trumpeter swan (*Cygnus buccinator*) aerial surveys were conducted during May and August 2009 on the Copper River Delta and surrounding areas of the Chugach National Forest in south central Alaska. The surveys were accomplished through cooperation between the U.S. Fish and Wildlife Service and the U.S. Forest Service. In May 765 white (adult and subadult) swans and 169 nests were counted. In August 698 white swans and 164 cygnets in 58 broods were recorded. Production of cygnets was below average. Nest success was 0.34, mean brood size was 2.8, and young made up 19% of the early fall population. The total fall swan population decreased 18% from 2008 and was 4% below the long-term mean.

Key words: trumpeter swan, *Cygnus buccinator*, Chugach National Forest, Copper River Delta

INTRODUCTION

The Copper River Delta and surrounding coastal wetlands in the Chugach National Forest support a large and dense nesting and summering population of trumpeter swans (*Cygnus buccinator*). Aerial surveys were conducted in this area as part of U.S. Fish and Wildlife Service (USFWS) statewide trumpeter censuses in 1968, 1975, and quinquennially thereafter (Hansen et al. 1971, King 1976, King and Conant 1981, Conant et al. 1985, Conant et al. 1991, Conant et al. 1996, Conant et al. 2001, Conant et al. 2007). The U.S. Forest Service (USFS) initiated aerial surveys in 1978, and annual swan surveys have been jointly accomplished under a formal agreement between the USFWS and USFS since 1981.

SURVEY AREA

The survey area comprised portions of the Copper River Delta and Controller Bay drainages within 11 U.S. Geological Survey 1:63,360 scale topographic maps (Figure 1). The area actually surveyed consisted of all potential swan nesting and summering habitat delineated on these maps (1,787 km²). In general, potential swan habitat included most lakes, rivers, streams and wetland areas under 760 m (2,500 ft) elevation.

METHODS

Aerial surveys were conducted 18-20 May 2009 with a Cessna 206 and 24-26 August 2009 with the USFWS de Havilland Turbine Beaver (N754). The survey method used for both surveys was described by King (1973), with modifications that allowed swan observations and the survey

flight path to be recorded digitally. A system of parallel tracks was flown 150-180 m above ground level over all known and potential swan habitat within the survey area. The pilot was responsible for navigation, searching for swans, and ensuring that all swan habitat was adequately surveyed, considering factors such as visibility and observer experience. The primary observer searched for swans and recorded the type and location of each observation onto a digital 1:63,360 topographic map, using a custom program run on a computer that was linked to the aircraft's GPS unit. The program produced two text files: a swan data file containing the geographic coordinates and attributes of each swan observation, and a flight path file containing point locations of the aircraft during the survey flight in five-second intervals. The program, developed by John Hodges (retired), USFWS, Migratory Bird Management, Juneau, Alaska, has been used for the spring survey since 2002 and for the fall survey since 2000. Prior to that, data were recorded on paper maps as per King 1973 and afterwards transcribed into a computer and digitized to produce the final data files.

Data were treated as census data with no attempt to correct for incomplete detection. Possible sources of visibility bias were using different pilots and observers with variable levels of experience and training, using more than one type of aircraft, and surveying in variable weather conditions. However, the standardized survey method combined with the generally excellent visibility of swans from the air likely resulted in only a very small proportion of birds being missed.

RESULTS AND DISCUSSION

Population Trend

In May 765 white swans (adults and subadults) were observed, an increase of 20% from spring 2008 (Table 1). The count was 5% below the 10-year mean and 13% above the long-term mean.

In August 698 white swans were observed, a decrease of 14% from August 2008 (Figures 1 and 2, Table 2). The count was 19% below the 10-year mean and 2% below the long-term mean. The total number of swans, including cygnets, was 862, down 18% from 2008, 21% below the 10-year mean, and 4% below the long-term mean.

Productivity

Sixty-one percent of pairs had a nest in May, 19% above the long-term mean (Table 3). The number of nests (169) was 37% above the long-term mean (Figures 3 and 4, Table 3). In August, 164 cygnets in 58 broods were recorded, with a mean brood size of 2.8 (Figures 3 and 4, Tables 2 and 3). The numbers of cygnets and broods were 15% below and 2% above their long-term means, respectively. The mean brood size was 15% below its long-term mean. Nest success, which we defined as the proportion of occupied nests in May that produced at least one cygnet still alive in August, was 0.34, 30% below the long-term mean. The number of young per occupied nest, a productivity statistic that incorporates the measures of nest success and mean brood size, was 1.0, 38% below the long-term mean. Young made up 19% of the early fall population, 11% below the long-term mean.

Trumpeter swans in the survey area exhibited a strong nesting effort in 2009, as measured by the number of nests and the percentage of pairs with a nest. Their ultimate reproductive success was

substantially reduced, however, by low nest success and small mean brood size. Overall, trumpeter swans experienced below-average production in the Copper River Delta and Controller Bay drainages in 2009.

SURVEY PERSONNEL

Swan surveys summarized in this report were conducted by the following individuals and agencies:

Year	Spring Survey Personnel	Fall Survey Personnel
1968		J. King, J. Bartonek - USFWS
1975		J. King, T. Schoenfelder - USFWS
1978	G. Bucaria, S. Watson – USFS	G. Bucaria, S. Watson – USFS
1979		C. Moitoret – USFS
1980	G. Bucaria, D. Logan – USFS	J. King, B. Conant – USFWS
1981	G. Bucaria – USFS	J. King, B. Conant – USFWS
1982	R. King, G. Bucaria – USFWS, USFS	J. King, B. Conant – USFWS
1983	R. King, Zimmerman – USFWS	B. Conant, D. Derksen, J. Baker, M. Jacobson, G. Covell, Broekema – USFWS, USFS
1984	R. King, R. Leedy – USFWS	B. Conant, J. Hodges – USFWS
1985	R. King, T. Simon-Jackson – USFWS	B. Conant, S. Cain – USFWS
1986	R. King, K. Bollinger – USFWS	B. Conant, J. Hodges – USFWS
1987	R. King, M. North – USFWS	B. Conant, J. Hodges – USFWS
1988	R. King, R. Pospahala – USFWS	B. Conant, J. Hodges – USFWS
1989	R. King, F. Gerhardt – USFWS	B. Conant, R. Oates, M. Jacobson – USFWS
1990	R. King, A. Brackney – USFWS	B. Conant, D. Groves, J. King – USFWS
1991	R. King, A. Brackney – USFWS	B. Conant, D. Groves – USFWS
1992	R. King, D. Youkey – USFWS, USFS	J. Hodges, J. King – USFWS
1993	R. King, D. Youkey – USFWS, USFS	J. Hodges, D. Groves, D. Youkey – USFWS, USFS
1994	R. King, P. Greene – USFWS, USFS	B. Conant, D. Groves – USFWS
1995	R. King, R. Leedy – USFWS	B. Conant, E. Lucas – USFWS
1996	R. King, S. Hill – USFWS	J. Hodges, D. Groves – USFWS
1997	R. King, T. Tiplady – USFWS	B. Conant, G. Fowler – USFWS, Ducks Unlimited Canada
1998	W. Larned, J. King – USFWS	B. Conant, J. King – USFWS
1999	W. Larned, T. Tiplady – USFWS	B. Conant, J. King – USFWS
2000	J. Sarvis, R. Oates – USFWS	B. Conant, D. Petersen – USFWS
2001	E. Mallek, P. Anderson – USFWS	B. Conant, J. King – USFWS
2002	E. Mallek, L. Lysne – USFWS	B. Conant, L. Lysne, D. Groves – USFWS
2003	E. Mallek, L. Lysne - USFWS	B. Conant, H. Wilson – USFWS
2004	E. Mallek, J. King - USFWS	J. Hodges, H. Wilson - USFWS
2005	E. Mallek, J. King - USFWS	B. Conant, J. King - USFWS
2006	W. Larned, J. Seyfried - USFWS, USGS	P. Anderson, E. Mallek - USFWS
2007	K. Bollinger, C. Dau - USFWS	R. MacDonald, P. Anderson – USFWS
2008	W. Larned, N. Olson - USFWS	P. Anderson, D. Groves, D. Alcorn - USFWS
2009	W. Larned, W. Schock – USFWS, ADFG	P. Anderson, D. Groves - USFWS

LITERATURE CITED

- Conant, B., J. I. Hodges, J. G. King, and S. L. Cain. 1985. Alaska trumpeter swan status report - 1985. U.S. Fish and Wildlife Service Report, Juneau, Alaska. 10pp.
- _____, _____, D. J. Groves, and J. G. King. 1991. Alaska trumpeter swan status report - 1990. U.S. Fish and Wildlife Service Report, Juneau, Alaska. 31pp.
- _____, _____, _____, and _____. 1996. Alaska trumpeter swan status report - 1995. U.S. Fish and Wildlife Service Report, Juneau, Alaska.
- _____, _____, _____, and _____. 2001. Alaska trumpeter swan status report - 2000. U.S. Fish and Wildlife Service Report, Juneau, Alaska. 37pp.
- _____, _____, _____, and _____. 2007. Alaska trumpeter swan status report - 2005. U.S. Fish and Wildlife Service Report, Juneau, Alaska. 49pp.
- Hansen, H. A., P. E. K. Shepherd, J. G. King, and W. A. Troyer. 1971. The trumpeter swan in Alaska. Wildl. Mono. No. 26: 1-83.
- King, J. G. 1973. The use of small airplanes to gather swan data in Alaska. Wildfowl 24:15-20.
- _____. 1976. Trumpeter swan survey in Alaska. Unpubl. paper presented at the Fifth Trumpeter Swan Society Conference. The Trumpeter Swan Society, Maple Plain, Minnesota.
- _____ and B. Conant. 1981. The 1980 census of trumpeter swans in Alaskan nesting habitats. American Birds, vol. 35, no. 5, pp. 789-93.

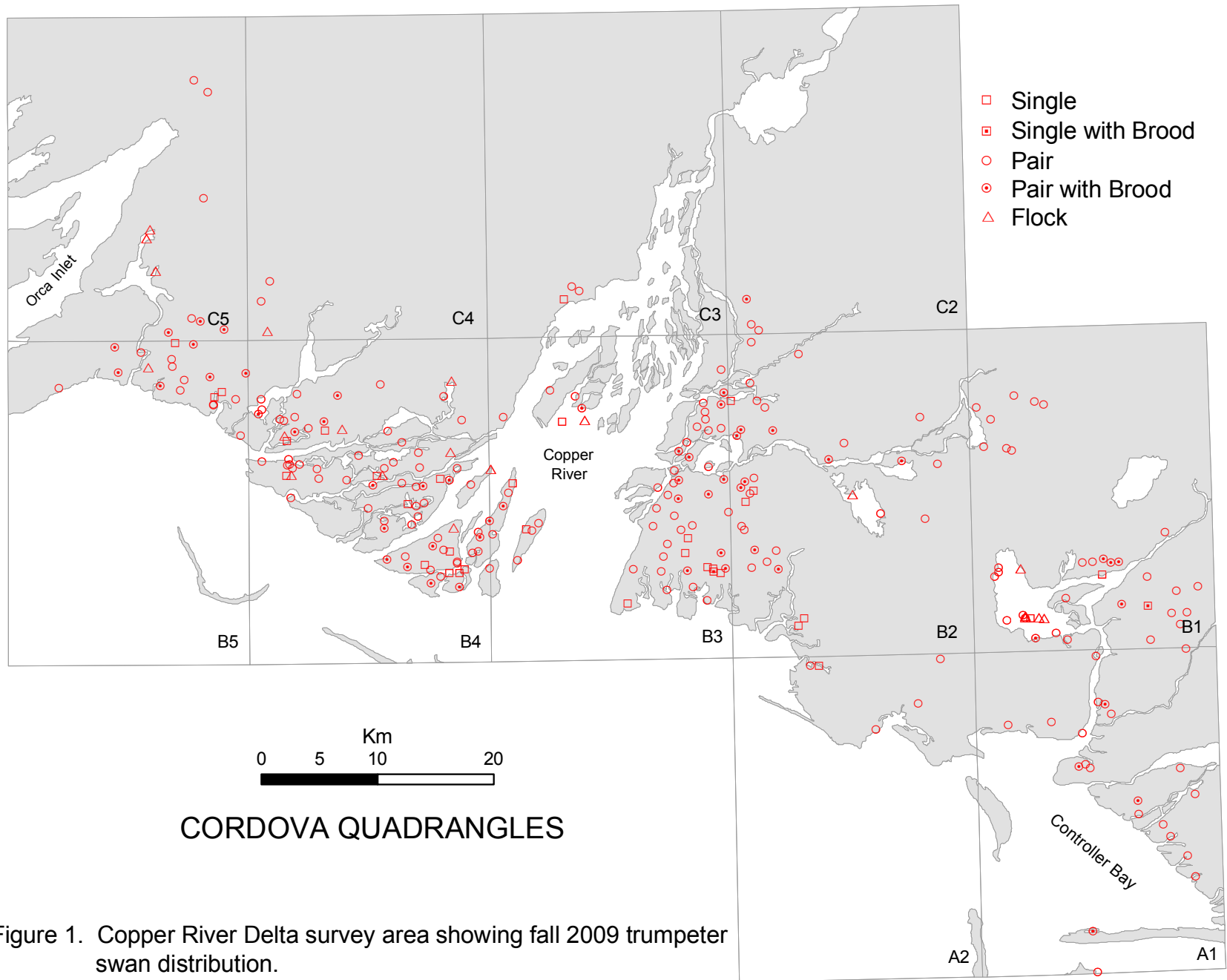


Figure 1. Copper River Delta survey area showing fall 2009 trumpeter swan distribution.

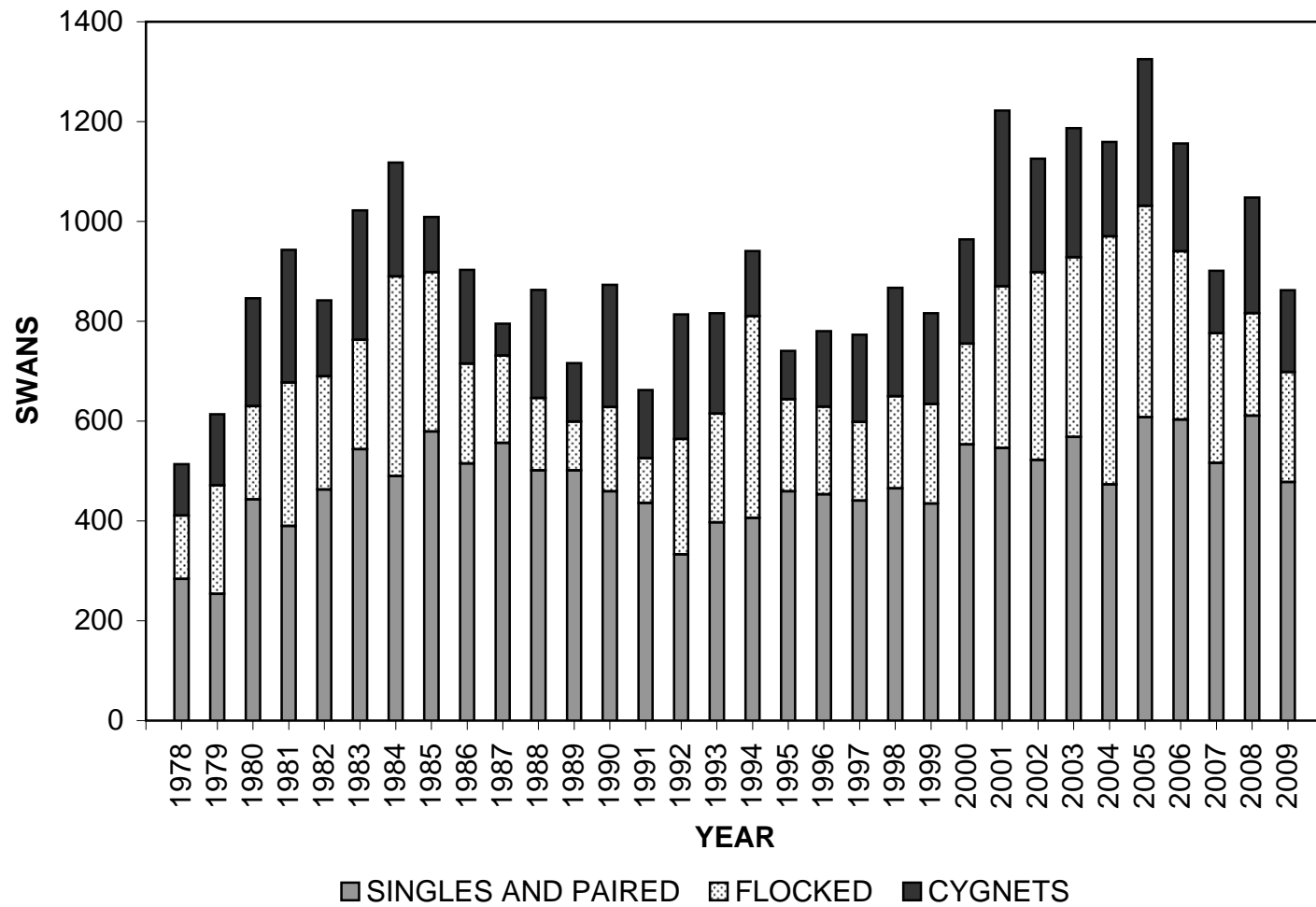


Figure 2. Population trend of trumpeter swans on the Copper River Delta survey area from fall surveys, 1978-2009.

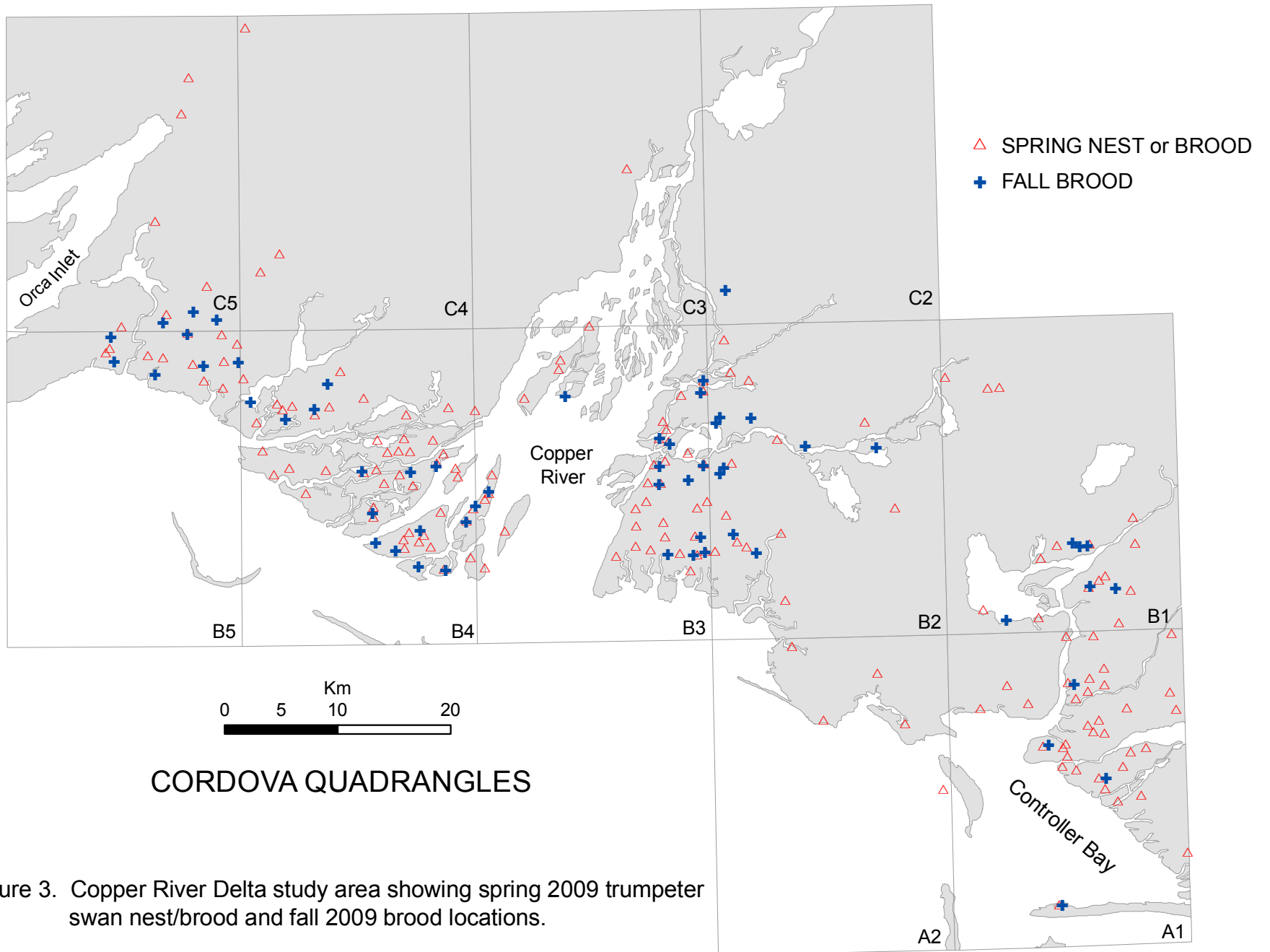


Figure 3. Copper River Delta study area showing spring 2009 trumpeter swan nest/brood and fall 2009 brood locations.

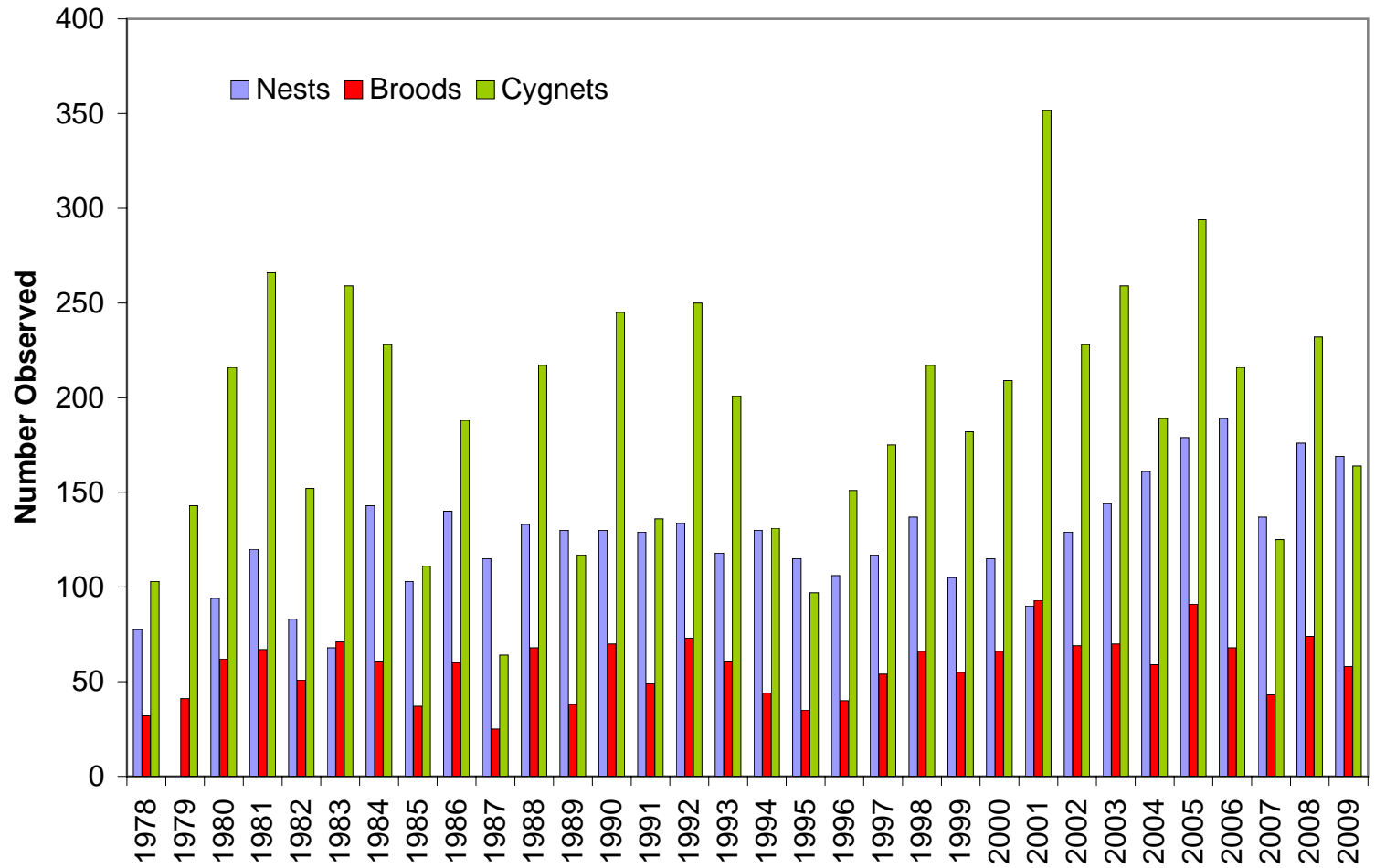


Figure 4. Number of trumpeter swan nests recorded during spring surveys, and number of broods and cygnets recorded during fall surveys, 1978-2009. A spring survey was not conducted in 1979.

Table 1. Spring survey swan observations - Chugach National Forest (1978-2009).

Year	Dates Flown	Observations	White Swans				Cygnets	Total Swans
			Paired	Single	Flocked	Subtotal		
1978	5/15-5/18	192	278	20	362	660	--	660
1980	May ^a	222	320	45	169	534	--	534
1981	5/21-5/23	244	350	37	235	622	--	622
1982	6/2-6/4	247	356	44	200	600	--	600
1983	6/6-6/8	297	448	47	144	639	23	662
1984	5/21-5/23	324	502	43	190	735	--	735
1985	6/8-6/10	309	452	50	235	737	--	737
1986	5/22-5/24	304	508	35	123	666	--	666
1987	5/22-5/26	291	462	39	101	602	--	602
1988	5/25-5/26	263	418	42	116	576	5	581
1989	5/17-5/19	241	400	28	174	602	--	602
1990	5/23-5/25	226	374	25	121	520	--	520
1991	5/20-5/22	250	394	34	152	580	--	580
1992	5/19-5/20	249	412	25	195	632	--	632
1993	5/15-5/17	248	394	25	159	578	--	578
1994	5/24-5/25	278	436	31	204	671	--	671
1995	5/25-5/26	246	402	24	157	583	--	583
1996	5/21-5/22	267	442	27	125	594	--	594
1997	5/26-5/27	246	406	27	84	517	--	517
1998	5/26-5/29	285	462	40	110	612	--	612
1999	6/3-6/5	229	358	33	79	470	--	470
2000	5/25-5/26	256	408	28	255	691	--	691
2001	5/29-5/31	261	410	39	117	566	31	597
2002	5/29-5/31	400	536	88	391	1015	--	1015
2003	5/27-5/29	417	632	76	205	913	--	913
2004	5/26-5/28	389	606	52	282	940	--	940
2005	5/23-5/26	425	664	66	213	943	4	947
2006	5/24-5/25	484	714	100	177	991	--	991
2007	5/19-5/20	433	670	84	152	906	--	906
2008	5/27-5/29	323	478	68	93	639	--	639
2009	5/18-5/20	340	508	60	197	765	2	767
10-yr. Mean ^b		362	548	63	196	807	--	811
Long-term Mean ^c		295	456	44	177	678	--	680
% Change from:								
2008		5%	6%	-12%	112%	20%	--	20%
10-yr. Mean ^b		-6%	-7%	-5%	0%	-5%	--	-5%
Long-term Mean ^c		15%	11%	36%	11%	13%	--	13%

^a Exact dates unknown.

^b 1999-2008.

^c 1978-2008.

Table 2. Fall survey swan observations - Chugach National Forest (1968-2009).

Year	Dates Flown	Observations	White Swans				Cygnets	Young in Pop.(%)	Total Swans
			Paired	Single	Flocked	Subtotal			
1968	8/14-8/16	199	326	24	181	531	267	33	798
1975	8/14-8/20	196	312	24	142	478	131	22	609
1978	8/9-8/12	186	248	36	127	411	103	20	514
1979	8/18-8/23	160	234	20	217	471	143	23	614
1980	8/5-8/12	262	410	33	187	630	216	26	846
1981	8/4-8/22	234	374	16	287	677	266	28	943
1982	8/11-8/14	271	436	27	227	690	152	18	842
1983	8/4-8/15	314	512	32	219	763	259	25	1022
1984	8/6-8/10	303	448	42	400	890	228	20	1118
1985	8/11-8/16	348	534	45	319	898	111	11	1009
1986	8/6-8/8	298	490	25	200	715	188	22	903
1987	8/1-8/3	318	510	46	175	731	64	8	795
1988	8/3-8/5	281	472	29	145	646	217	25	863
1989	8/3-8/6	278	460	41	98	599	117	16	716
1990	8/5-8/12	267	424	35	169	628	245	28	873
1991	8/2-8/4	253	400	36	90	526	136	21	662
1992	8/29-9/1	197	314	19	231	564	250	31	814
1993	8/22-8/24	237	368	29	218	615	201	25	816
1994	8/24-8/28	260	382	24	404	810	131	14	941
1995	8/2-8/6	280	408	51	185	644	97	13	741
1996	8/25-8/28	259	430	23	176	629	151	19	780
1997	8/14-8/17	259	416	25	157	598	175	23	773
1998	8/2-8/4	273	428	37	185	650	217	25	867
1999	8/10-8/14	258	408	27	199	634	182	22	816
2000	8/2-8/7	325	512	41	202	755	209	22	964
2001	8/22-8/24	314	520	26	324	870	352	29	1222
2002	8/4-8/6	313	472	50	376	898	228	20	1126
2003	8/6-8/8	349	518	50	360	928	259	22	1187
2004	8/23-8/25	284	446	27	497	970	189	16	1159
2005	8/2-8/5	361	552	56	423	1031	294	22	1325
2006	8/5-8/8	356	544	59	337	940	216	19	1156
2007	8/20-8/24	301	486	30	260	776	125	14	901
2008	8/22-8/26	329	592	19	205	816	232	22	1048
2009	8/24-8/26	277	444	34	220	698	164	19	862
10-yr. Mean ^a		319	505	39	318	862	229	21	1090
Long-term Mean ^b		276	436	33	240	709	192	21	902
% Change from:									
2008		-16%	-25%	79%	7%	-14%	-29%	-14%	-18%
10-yr. Mean ^a		-13%	-12%	-12%	-31%	-19%	-28%	-9%	-21%
Long-term Mean ^b		0%	2%	2%	-8%	-2%	-15%	-11%	-4%

^a1999-2008.^b1968-2008.

Table 3. Swan productivity - Chugach National Forest (1968-2009).

Year	% Pairs with Nest in Spring	% Pairs with Brood in Fall	Nests	Broods	Nest Success ^a	Mean Brood Size	Young Per Occupied Nest ^b
1968	-- ^c	40	-- ^c	67	-- ^c	4.0	-- ^c
1975	-- ^c	24	-- ^c	39	-- ^c	3.4	-- ^c
1978	51	26	78	32	0.41	3.2	1.3
1979	-- ^c	34	-- ^c	41	-- ^c	3.5	-- ^c
1980	59	30	94	62	0.66	3.5	2.3
1981	58	34	120	67	0.56	4.0	2.2
1982	40	23	83	51	0.61	3.0	1.8
1983	27	27	68	71	1.04	3.6	3.8
1984	53	27	143	61	0.43	3.7	1.6
1985	42	13	103	37	0.36	3.0	1.1
1986	52	24	140	60	0.43	3.1	1.3
1987	43	10	115	25	0.22	2.6	0.6
1988	59	29	133	68	0.51	3.2	1.6
1989	63	17	130	38	0.29	3.1	0.9
1990	67	33	130	70	0.54	3.5	1.9
1991	64	25	129	49	0.38	2.8	1.1
1992	65	46	134	73	0.54	3.4	1.9
1993	59	32	118	61	0.52	3.3	1.7
1994	57	23	130	44	0.34	3.0	1.0
1995	56	17	115	35	0.30	2.8	0.8
1996	48	19	106	40	0.38	3.8	1.4
1997	55	25	117	54	0.46	3.2	1.5
1998	57	30	137	66	0.48	3.3	1.6
1999	54	26	105	55	0.52	3.3	1.7
2000	52	25	115	66	0.57	3.2	1.8
2001	39	35	90	93	1.03	3.8	3.9
2002	43	29	129	69	0.53	3.3	1.8
2003	41	26	144	70	0.49	3.7	1.8
2004	47	26	161	59	0.37	3.2	1.2
2005	48	33	179	91	0.51	3.2	1.6
2006	45	23	189	68	0.36	3.2	1.1
2007	39	16	137	43	0.31	2.9	0.9
2008	63	24	176	74	0.42	3.1	1.3
2009	61	25	169	58	0.34	2.8	1.0
10-yr. Mean ^d	47	26	143	69	0.51	3.3	1.7
Long-term Mean ^e	51	26	123	57	0.49	3.3	1.6
% Change from:							
2008	-3%	4%	-4%	-22%	-19%	-10%	-23%
10-yr. Mean ^d	30%	-5%	19%	-16%	-33%	-15%	-42%
Long-term Mean ^e	19%	-6%	37%	2%	-30%	-15%	-38%

^a Proportion of total nests that produced 1 or more young to near fledging age.

^b Total number of young in fall divided by total number of nests and broods (known territorial pairs) in spring.

^c Spring survey not conducted.

^d 1999-2008.

^e Mean excludes 2009.

Appendix. Results of 2009 spring and fall trumpeter swan surveys by 1:63,360 topographic map.

**TRUMPETER SWAN SURVEYS
COPPER RIVER DELTA**

SPRING 2009

MAP	QUAD	DATE	NO. OF OBS	AS SNG	IN PRS	IN FKS	NO. OF PRS	NO. OF FKS	PRS w/ NEST	SNG w/ NEST	0 w/ NEST	PRS w/ BRD	SNG w/ BRD	0 w/ BRD	NO. OF NESTS	NO. OF BRDS	TOT ADU	TOT YNG	TOT SWANS
CORDOVA	A1	05/20/09	51	7	82	24	41	3	32	2	0	0	0	0	34	0	113	0	113
CORDOVA	A2	05/20/09	6	0	12	0	6	0	5	0	0	0	0	0	5	0	12	0	12
CORDOVA	B1	05/19/09	44	8	54	69	27	9	13	1	0	1	0	0	14	1	131	2	133
CORDOVA	B2	05/19/09	48	10	72	6	36	2	13	0	0	0	0	0	13	0	88	0	88
CORDOVA	B3	05/19/09	63	8	104	11	52	3	33	3	0	0	0	0	36	0	123	0	123
CORDOVA	B4	05/19/09	73	15	112	12	56	2	39	6	0	0	0	0	45	0	139	0	139
CORDOVA	B5	05/19/09	27	6	36	54	18	3	10	1	0	0	0	0	11	0	96	0	96
CORDOVA	C2	05/19/09	1	0	2	0	1	0	0	0	0	0	0	0	0	0	2	0	2
CORDOVA	C3	05/19/09	5	3	4	0	2	0	2	0	0	0	0	0	2	0	7	0	7
CORDOVA	C4	05/18/09	4	0	8	0	4	0	3	0	0	0	0	0	3	0	8	0	8
CORDOVA	C5	05/18/09	18	3	22	21	11	4	6	0	0	0	0	0	6	0	46	0	46
TOTAL			340	60	508	197	254	26	156	13	0	1	0	0	169	1	765	2	767

FALL 2009

MAP	QUAD	DATE	NO. OF OBS	AS SNG	IN PRS	IN FKS	NO. OF PRS	NO. OF FKS	PRS w/ NEST	SNG w/ NEST	0 w/ NEST	PRS w/ BRD	SNG w/ BRD	0 w/ BRD	NO. OF NESTS	NO. OF BRDS	TOT ADU	TOT YNG	TOT SWANS
CORDOVA	A1	08/26/09	21	0	42	0	21	0	--	--	--	4	0	0	--	4	42	8	50
CORDOVA	A2	08/25/09	5	1	8	0	4	0	--	--	--	0	0	0	--	0	9	0	9
CORDOVA	B1	08/25/09	40	3	64	120	32	5	--	--	--	5	1	0	--	6	187	18	205
CORDOVA	B2	08/25/09	32	5	52	32	26	1	--	--	--	9	0	0	--	9	89	27	116
CORDOVA	B3	08/24/09	59	10	94	13	47	2	--	--	--	13	1	0	--	14	117	39	156
CORDOVA	B4	08/24/09	81	11	126	27	63	7	--	--	--	15	0	0	--	15	164	41	205
CORDOVA	B5	08/24/09	20	3	30	16	15	1	--	--	--	6	0	0	--	6	49	15	64
CORDOVA	C2	08/25/09	3	0	6	0	3	0	--	--	--	1	0	0	--	1	6	3	9
CORDOVA	C3	08/25/09	3	1	4	0	2	0	--	--	--	0	0	0	--	0	5	0	5
CORDOVA	C4	08/24/09	3	0	4	3	2	1	--	--	--	0	0	0	--	0	7	0	7
CORDOVA	C5	08/24/09	10	0	14	9	7	3	--	--	--	3	0	0	--	3	23	13	36
TOTAL			277	34	444	220	222	20	--	--	--	56	2	0	--	58	698	164	862