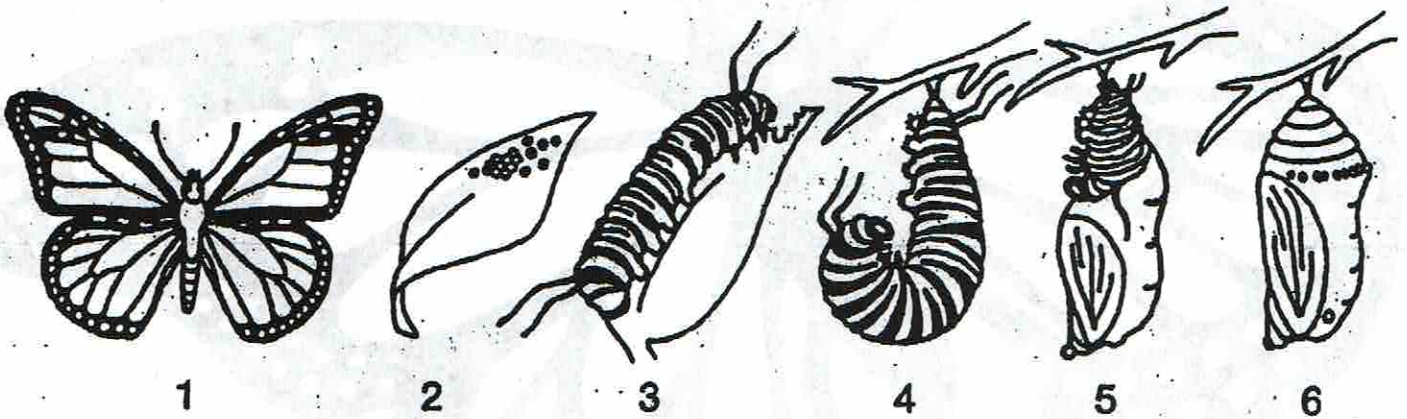


Amazing Monarchs

The amazing life of a Monarch butterfly begins when the adult female glues her tiny white, shiny eggs to the underside of a milkweed leaf. In about a week, out of each egg climbs a beastly looking caterpillar with rings of black, yellow, and white.

The caterpillar stuffs itself on milkweed leaves. When it is about two inches long, it attaches itself to a twig, hanging upside down. Its skin slowly splits and soon the pupa, in a beautiful green chrysalis covered with golden spots, develops. The chrysalis splits open and a beautiful Monarch butterfly appears with its bright orange and black wings.

Like birds, Monarchs fly to warmer southern areas for winter and return in the spring to begin the life cycle again.



Finish the six sentences to describe the life cycle of a Monarch.

1. The female butterfly _____
2. In about a week _____
3. The caterpillar _____
4. Then the caterpillar _____
5. Its skin _____
6. The chrysalis _____

Caterpillar, Chrysalis, and Butterfly Patterns

