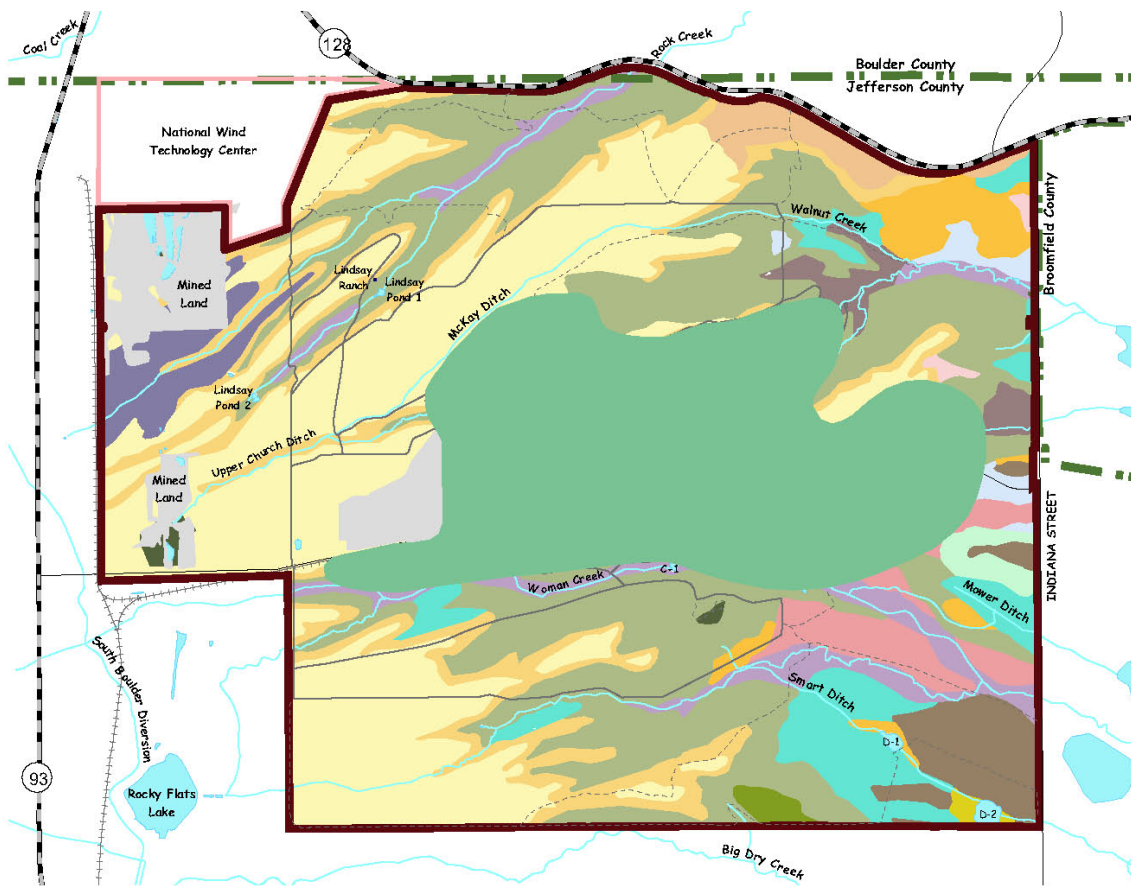




US Fish & Wildlife Service

Rocky Flats National Wildlife Refuge Jefferson County, CO



Soils

Soil Map Units

- | | |
|--|--|
| Denver clay loam | Midway clay loam |
| Denver-Klutch clay loams | Nederland very cobbly sandy loam |
| Denver-Klutch-Midway clay loams | Nunn clay loam |
| Englewood clay loam | Pits, gravel |
| Flatirons very cobbly sandy loam | Standley-Nunn gravelly clay loam |
| Flatirons very stony sandy loam | Valmont clay loam |
| Haverson loam | Veldkamp-Nederland very cobbly sandy loams |
| Leyden-Primen-Standley cobbly clay loams | Willowman-Leyden cobbly loams |
| McClave clay loam | DOE Retained Area (Subject to Change) |

0 0.5 1 Mile

December 2003



Figure no. 11