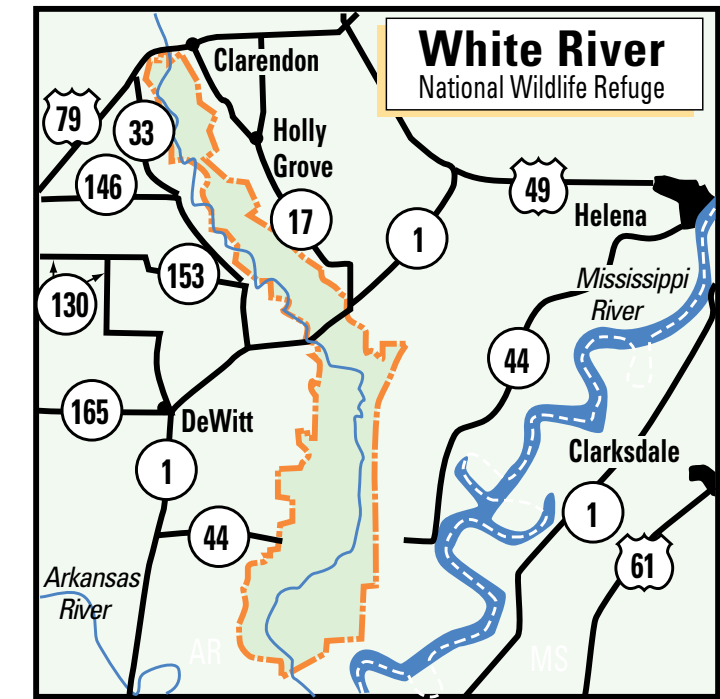


White River National Wildlife Refuge

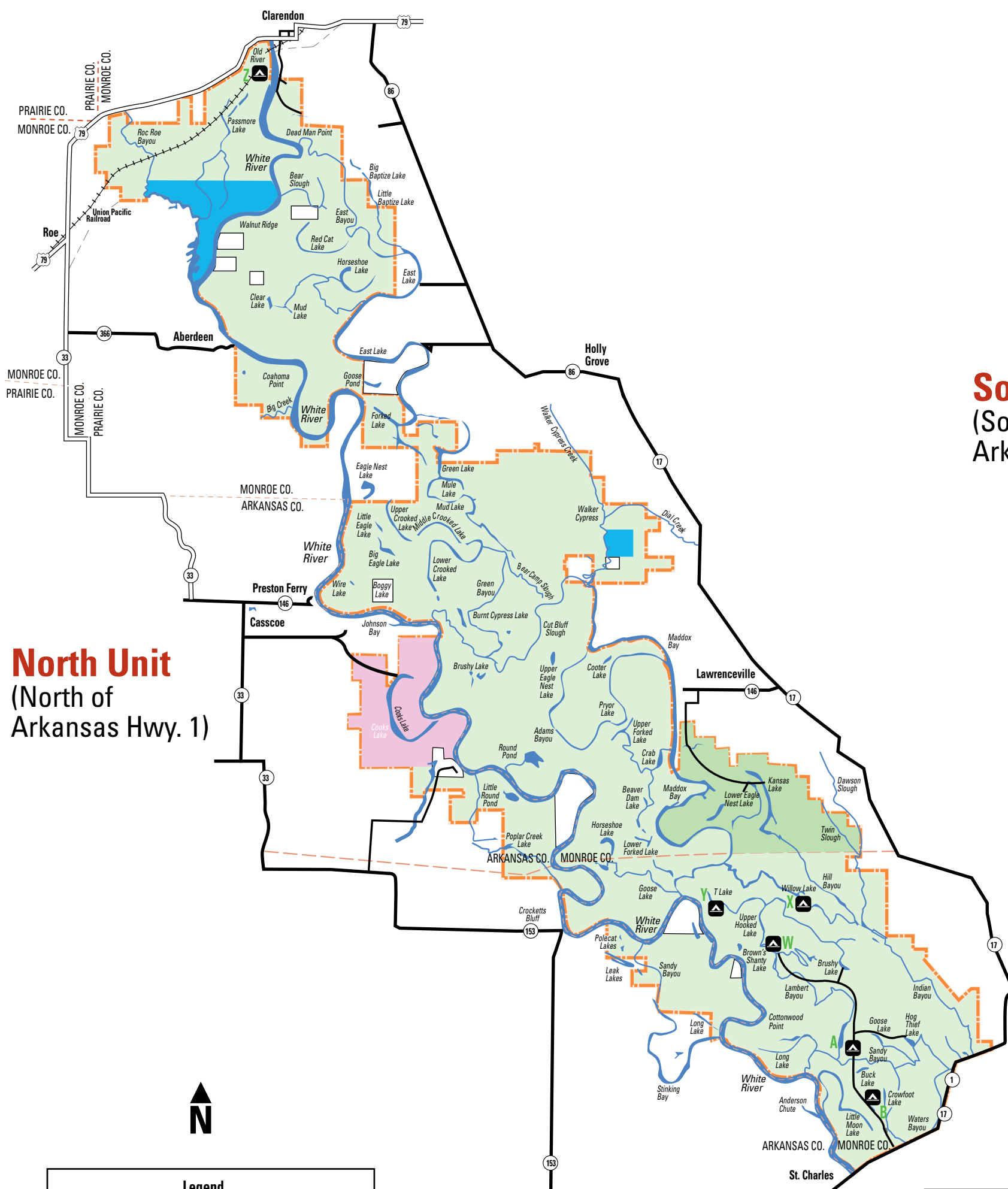
Located in Arkansas, Monroe, Phillips and Desha counties

Note: Refuge lands within existing outtracts and Trustee Holder WMA not shown.



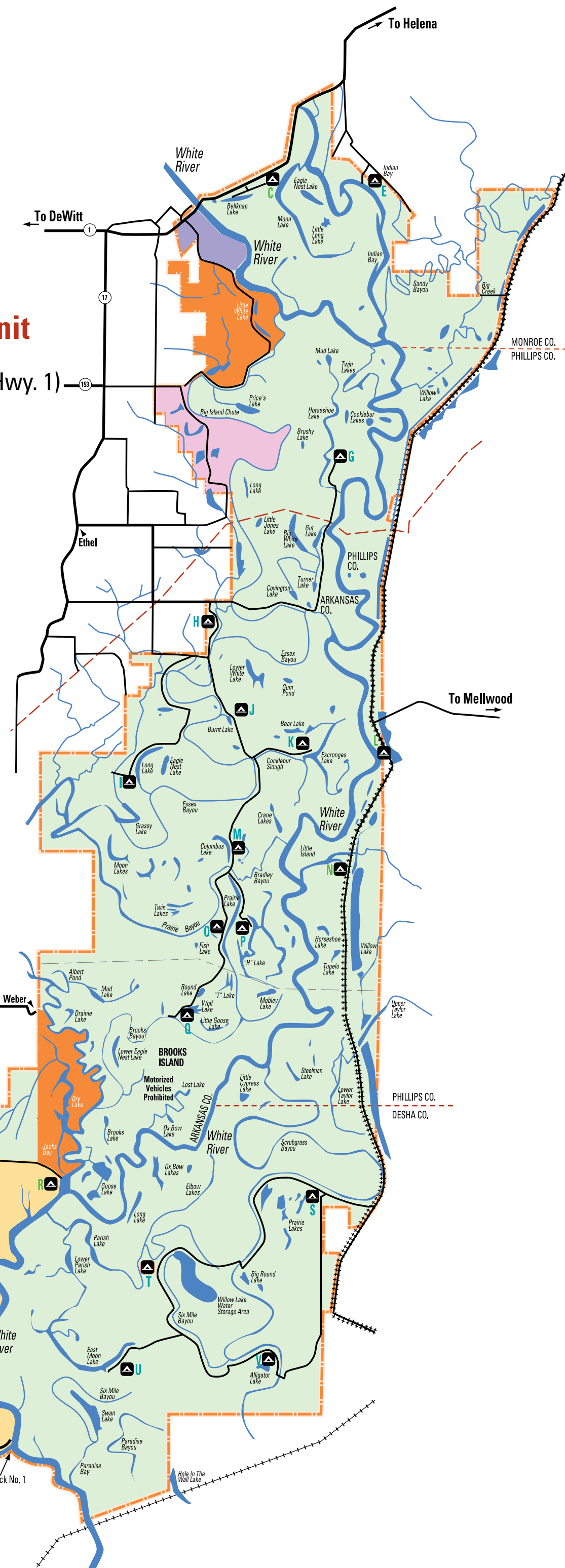
Vicinity Map
Scale in Miles
0 10 20 30

Hunting Seasons	North	South
Archery Deer/Turkey	10/1 - 01/31	10/1 - 12/31
Youth Deer Hunt	11/7 - 11/8	11/7 - 11/8
Muzzleloader Deer	10/17 - 10/19 10/20 - 10/23 (Bucks only)	10/17 - 10/19
Gun Deer (modern firearm)	11/14 - 11/16 11/17 - 11/18 (Bucks only)	11/14 - 11/16
Waterfowl	state season	(Tuesday, Thursday, Saturday, Sunday) state season
Furbearer	11/21 - 01/31	12/01 - 12/15
Rabbit/Squirrel	9/5 - 1/31	9/5 - 11/30
Spring Turkey	state season	state season
Black Bear	closed	closed
Spring Squirrel	state season	closed



North Unit (North of Arkansas Hwy. 1)

South Unit (South of Arkansas Hwy. 1)



Legend

- Refuge Boundary
- Area Closed to All Entry
- Area Closed to All Entry November 1-February 28
- Waterfowl Hunt Areas-South Unit only
- Area Closed to All Hunting
- Kansas Lake Area-Closed to All Entry December 1-February 28
- Refuge Lands Not Open to the General Public for Hunting, Fishing or Trapping
- Private Land Not Open to the General Public
- Gravel roads
- Paved roads
- Levee
- Gas Pipeline
- Powerline
- Designated Camping Areas

Open Year Round	Open March 1-Dec. 15
A Swan Lake	E Indian Bay
B Buck Lake	G Horseshoe Lake
C Moon Lake	H Smokehouse Hill*
L Hudson's Landing	I Long Lake
N Floodgate	J Burnt Lake
R Jacks Bay	K Escronges Lake
W Brown Shanty	M Columbus Lake
X Willow Lake	O Prairie Lake
Y T Lake	P 'H' Lake
Z Old River	Q Wolf Lake
	S Prairie Lakes*
	T Six Mile Camp
	U East Moon Lake
	V Alligator Lake

* Open through Dec. 31

Scale 0 1 2 3 4 Miles