



# United States Department of the Interior

## FISH AND WILDLIFE SERVICE

Waubay National Wildlife Refuge and  
Wetland Management District  
44401 134A St.  
Waubay, SD 57273-5301  
Ph: 605-947-4521; Fax: 605-947-4524

### 2010 Waubay National Wildlife Refuge Deer Hunting Regulations

#### Deer Seasons Dates:

Archery (Units ARD-ST1 or ARD-ER1 or ARD-LM1):	September 25 to November 11
Muzzleloader I (Unit RFD-WA1 or RFD-WA101):	November 12 to November 16
Muzzleloader II (Unit RFD-WA2 or RFD-WA201):	November 17 to November 21
Rifle (Unit RFD-WA3 or RFD-WA301):	November 22 to December 5
Late season archery (same units as above):	December 6 to December 31

**There were misprints on the Archery and Refuge Deer Applications:** The last refuge deer hunt (archery) ends on **December 31, not January 9 or 31; there are no January hunts on the Refuge for any season or species.**

**\*\*REMINDER\*\*** *The use of nails, wires, screws, bolts or **screw-in type steps** is prohibited on National Wildlife Refuges and Waterfowl Production Areas (WPAs-green signs).*

**General Regulations:** - No parking in front of access gates.

- Deer is the only game species with established Refuge hunting seasons.
- No camping or camp fires.
- Shooting at, from, or across public roads and right-of-ways is illegal.

#### Refuge Deer Hunting Regulations (all seasons):

- **Closed Areas:** The entire Headquarters Island is the only portion of the Refuge closed to all deer hunting (see map). The rest of the Refuge is open by permit/license per season.

- **Scouting:** Pre-season scouting on the Refuge is not permitted, except for viewing from public roads.

- **Hunting:** Only hunters with a valid AND un-filled tag for the appropriate season may enter the Refuge. Hunters may not enter the Refuge before or after the specific hunting season dates printed with or on their tag. Once your tag is filled, your hunt and access is over.

Example: if you filled your East River archery tag, but you have an upcoming Refuge firearm season tag....your access is terminated until the start of your firearm season. The idea is to let other hunters with un-filled tags have an enjoyable, safe, and disturbance-free chance at filling their tags. *Contact us if there are special circumstances (youth, disability, etc...) where you wish a non-licensed person to accompany you on your hunt.*

- **Boating:** Non-motorized boats (canoes or row-boats) can be launched only from boat access points (see map). No other Refuge sites can be used to launch boats. Motorboats can NOT be used to access Refuge islands from Waubay Lake, or any other part of the Refuge.

- **Tree Stands:** Temporary or portable tree stands are permitted, but the hunter's name and address or license number must be on the stand and legible from the ground. Nails, wires, and/or bolts damage trees, and are not permitted. Tree stands and accessories can not be placed prior to hunt start dates and must be removed by the last date of your hunt or when your tag is filled.

- **Field Dressing Deer:** After field dressing a deer, leave only the contents of the body cavity (gut pile). Hides, bones, etc. are considered litter, and must be packed out.

- **Safety:** Please let some one know when and where you are hunting and when you plan to return. Please be careful when boating; check the forecast. The wind may change directions or pick-up between the start and end of your hunt. Please be careful when crossing ice. Early season ice is un-safe and can change from 3" thick to open water in a matter of hours.

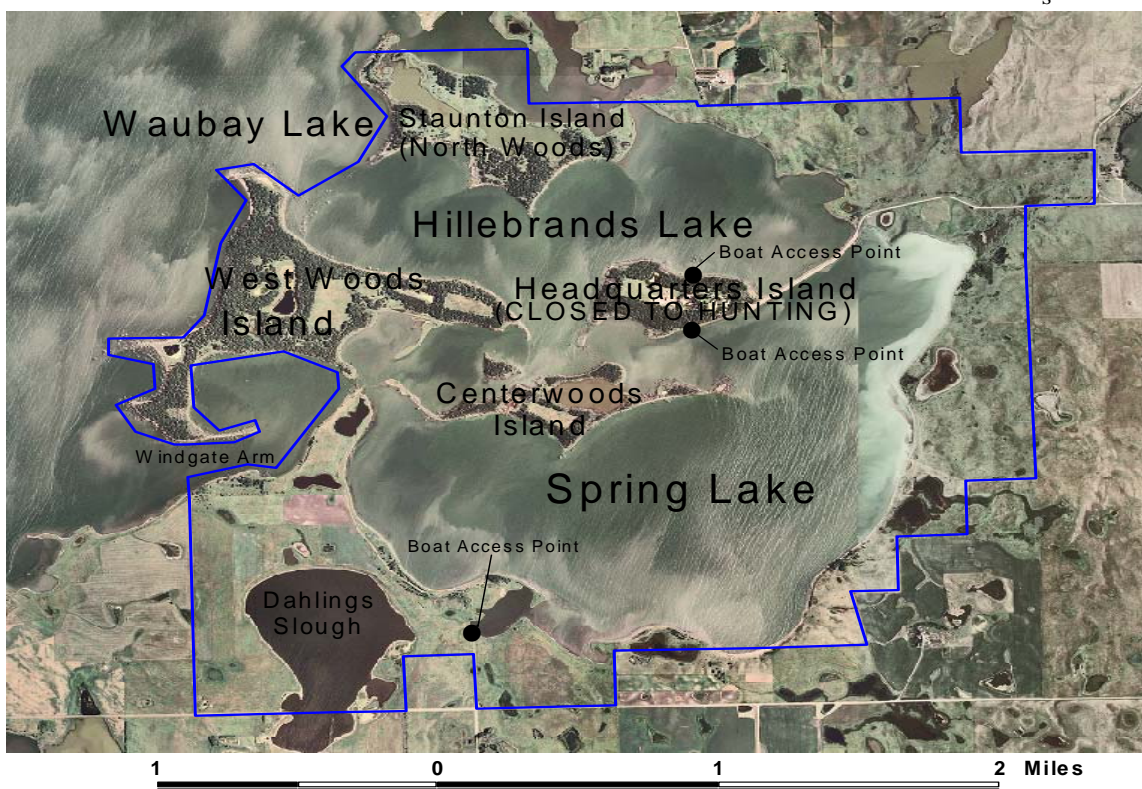
**ALL OTHER STATE REGULATIONS AND RESTRICTIONS APPLY TO REFUGE HUNTS.**

# Waubay National Wildlife Refuge

## Deer Hunting Map & Regulations (Closed To All Other Hunting)



 Refuge Boundary



### **\*\*REGULATION CHANGE\*\***

*The use of nails, wires, screws, bolts or **screw-in type steps** is prohibited on National Wildlife Refuges and Waterfowl Production Areas (WPAs-green signs), both managed by the US Fish and Wildlife Service.*

#### **Waubay NWR Archery Deer Season Regulations:**

- Archery seasons are closed Nov. 12<sup>th</sup> – Dec. 05<sup>th</sup> during firearm seasons.
- Driving or chasing deer to other hunters is not permitted during archery seasons.

**State Deer Tags:** Youth deer tags, state muzzleloader tags, and East River deer tags may NOT be used to hunt on the Refuge.

**Muzzleloader Rifles:** Only open or peep sights (no scopes) are permitted on muzzleloader rifles.

**Hunter Orange:** All Refuge muzzleloader and rifle deer hunters must wear a minimum of 400 square inches of solid florescent orange material on the head, chest, and back, and must be worn and visible at all times. Camouflage orange material is not legal.

**ALL OTHER STATE REGULATIONS AND RESTRICTIONS APPLY TO REFUGE HUNTS.**