

Arthur R. Marshall Loxahatchee National Wildlife Refuge

Waterfowl Hunting Regulations General Provisions

Arthur R. Marshall Loxahatchee National Wildlife Refuge is one of a system of refuges administered by the U.S. Fish and Wildlife Service as a wintering area for migratory waterfowl. Regulated public hunting is an appropriate use of our waterfowl resources and is allowed on 30,000 acres of the refuge’s 143,874 acres.

This leaflet contains special regulations that supplement state laws and Title 50, Code of Federal Regulations. The regulations are designed to maintain optimum waterfowl populations and, at the same time, provide a rewarding outdoor experience. Careful adherence to these regulations and due respect for others will ensure the future of waterfowl hunting on Arthur R. Marshall Loxahatchee National Wildlife Refuge.

General Hunting Regulations

The refuge open waterfowl season is concurrent with the state season. The refuge participates in both the early teal and regular seasons. Hunters may only take duck and coot.

Hunt days

Wednesday through Sunday during the state season. Closed Christmas Day.

Daily shooting hours

Thirty minutes before sunrise to 1 pm. All hunters must be out of the refuge by 3 pm.

Refuge hours

The refuge opens at 4 am. Entry prior to this time is prohibited.

Hunt area

The hunting area is indicated on the map on the reverse of this leaflet and is clearly posted as open to hunting. We allow hunting in the interior of the refuge south of latitude line 26.27.130 and north of mile marker 12 and 14. We prohibit hunting from canals, levees, or those areas posted as closed.

Alcohol

The use or possession of alcoholic beverages while hunting is prohibited.

Entry to refuge

All hunters are required to enter and leave the refuge from the Headquarters Area or the Hillsboro Area.

Entrance fees

Arthur R. Marshall Loxahatchee National Wildlife Refuge is an entrance fee area. Fees are \$5.00 per vehicle or \$1.00 per individual who walks in. However, your required signed Federal Migratory Bird Hunting Conservation Stamp (Duck Stamp) will serve as a season pass and all waterfowl hunters will be covered.

Licenses and stamps

All hunters must possess a valid Florida State Hunting License and Florida State Duck Stamp, except children under 16. In addition, all hunters age 16 and older must possess a signed valid Federal Migratory Bird Hunting Conservation Stamp.

Permit required

An annual refuge hunt permit, required of all hunters, is included on the face of this leaflet. Please complete and sign the permit. You must carry it while hunting. **Hunters must also fill out user information cards and place in fee canister after each day’s hunt.**

Steel shot

Only approved, non-toxic shot may be used. Possession of lead or other toxic shot in any gauge is prohibited.

Blinds

Only temporary blinds of native vegetation are permitted. Do not injure, destroy or remove any refuge vegetation.

Decoys

Decoys and other personal property must be removed from the hunting area following each day’s hunt.

Juveniles

All hunters under the age of 16 must be supervised by an adult. The adult must be a minimum of 21 years old. Hunters under 16 years of age must have completed a Hunter Education Course.

Dogs

The use of dogs is encouraged to retrieve dead or wounded waterfowl. Dogs must remain under the control of their handlers at all times.

Boats

Only outboard boats (no airboats, “Go Devils” or mudboats) are allowed. For safety, all boats must comply with U.S. Coast Guard and State of Florida regulations, including lights. There is a speed limit of 35 mph in all waters of the refuge and the L101 canal is a slow speed zone for safety. We require all boats operating outside the main perimeter canals (the L-40 Canal, L-39 Canal, L-7 Canal and

Guns

L-101 Canal) in the interior areas of the refuge and within the hunt area, to fly a 12 inch by 12 inch (30 cmx x 30cm) orange flag, 10 feet (3m) above the waterline.

Guns must be unloaded and cased or dismantled when outside the hunting area and when the boat is enroute to or from the hunting area and after 1:00 pm. Legal weapon shall be shotgun only (no greater than 10 gauge). **All other firearms or weapons are prohibited.**

Inspections

Hunters are subject to inspections of permits, licenses, equipment, bag limits, vehicles, boat and their contents by refuge law enforcement officers.

For emergencies or to report violations, contact law enforcement personnel at 1/800/307 5789.

Safety

Ensure your boat is seaworthy and carry plenty of fuel. If you should become lost and/or stranded, please observe the following procedures which will aid refuge personnel in locating you. Call the refuge emergency number 1/800/307 5789.

Do not leave your boat in order to walk out. If you have broken down, try to paddle to the canal and get on the levee.

If you are located from the levee, a boat, airboat, or aircraft, will be used to reach you. Continue to display your light.

During the daytime, signal the aircraft by attaching a cloth to your oar or pole and wave it. The aircraft will direct an officer in an airboat to your location. As the airboat nears you, it will stop and turn off its engine. At that time, call and make noise to help the officer pinpoint your location.

At night, if your vehicle is found in the parking area at refuge closing time, we will begin our search and rescue procedures.

If you have a portable light, turn it on after dark. Even a cigarette lighter can be seen from a good distance.

In connection with the above procedures, we strongly urge that each hunter have a light, flare gun or flares which may be fired from a shotgun.

Hunt Closure

The waterfowl hunt at Arthur R. Marshall National Wildlife Refuge may have to be terminated early, or some of the hunt area closed, should unusual climatic conditions result in threats to visitor safety, possible degradation of habitat by visitor use, or a concentration of endangered species within the hunt area. The refuge’s first obligation is to protect the visitor, habitat, and endangered species such as snail kites and wood storks.

Please Read This Important Message Attention Hunters!

Hunting on a national wildlife refuge is a privilege and your behavior while participating in this hunt may affect future hunting on refuges.

Every national wildlife refuge in this state provides habitat for several endangered or threatened species. Federal and State laws prohibit any activity that might harm endangered or threatened plants or animals. We believe that these hunts can be conducted without harming any endangered species and have taken certain precautions to make it so. We cannot, however, prevent irresponsible acts by hunters, and if such acts do occur, we may be forced to discontinue the hunts.

The following endangered or threatened species of wildlife may be found on Arthur R. Marshall Loxahatchee National Wildlife Refuge:

Federal and/or State Listed

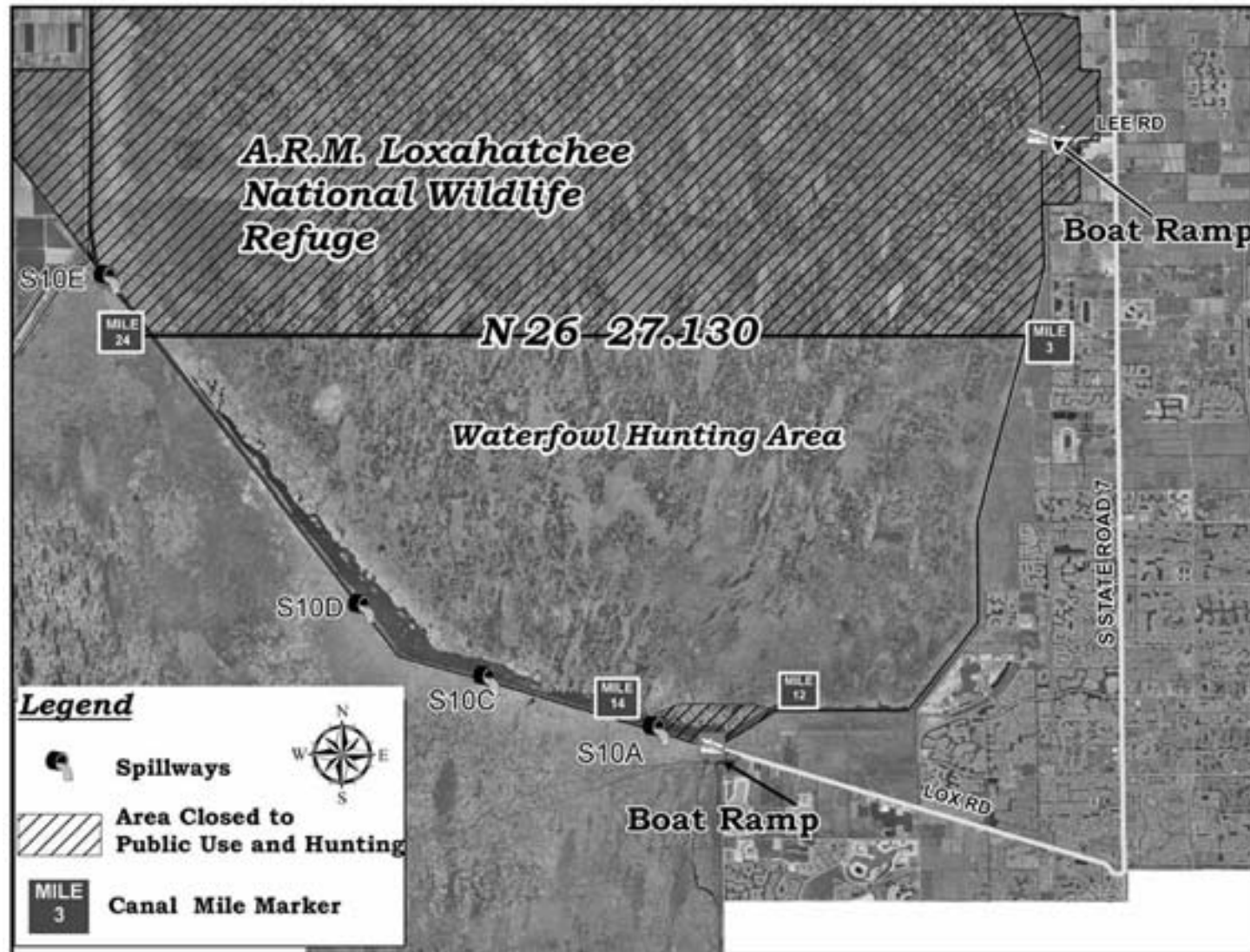
- Bald Eagle
- Crested Caracara
- Eastern Indigo Snake
- Florida Panther
- Florida Sandhill Crane
- Least Tern
- Peregrine Falcon
- Snail Kite
- Southeastern Kestrel
- Wood Stork

Remember!

Your hunt permit authorizes you to take only ducks and coots. Harming or needlessly disturbing any other wildlife, including any alligators, birds, mammals, turtles, frogs, lizards and even poisonous snakes, is a violation of refuge regulations and is cause for prosecution.

Arthur R. Marshall Loxahatchee

National Wildlife Refuge Waterfowl Hunting Regulations 2009-2010



Signs Protect Visitors and Resources

Millions of people visit national wildlife refuges each year. The impact of human activity, if not regulated, can degrade these wildlands. Signs control recreational activities while protecting natural resources on the refuge. Please respect the following signs:

Refuge Boundary Sign

National Wildlife Refuge - unauthorized entry prohibited.

Area Beyond This Sign Closed

No entry of any kind allowed beyond this sign.



Area Closed to Hunting

No hunting allowed in the area beyond this sign.

Public Hunting Area

Hunting is allowed in the area beyond this sign in accordance with Federal and State regulations.



Arthur R. Marshall Loxahatchee
National Wildlife Refuge
10216 Lee Road
Boynton Beach, FL 33473-4797
561/732 3684
<http://Loxahatchee.fws.gov>

U.S. Fish & Wildlife Service
1 800/344 WILD

July 2009



Season 2009-2010

Arthur R. Marshall Loxahatchee National Wildlife Refuge Hunt Permit for Duck and Coot

Name _____

Address _____

I have read and understand Arthur R. Marshall
Loxahatchee NWR Hunting Regulations.

Signature (This permit valid only when signed.) _____