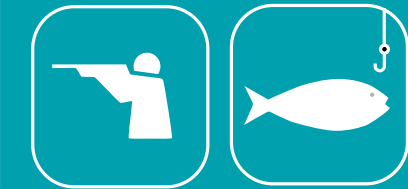


Cache River National Wildlife Refuge Public Use, Hunting and Fishing Regulations 2009-2010



Specific Hunt Regulations

A refuge permit is required for all hunts. When signed, the permit on the front cover of this brochure will serve as a permit for all hunts (except Quota Gun Deer Hunt) and must be carried on your person while hunting. A quota deer permit is also required for the Quota Gun Deer Hunt. Refuge regulations differ from surrounding deer zones and state seasons as follows:

*** The refuge is closed to all other entry and public use November 14-17 and 20-22, 2009 during the Quota Gun Deer Hunt. Only Quota Gun Deer Hunt permit holders are allowed on the refuge during this hunt.**

Migratory Birds

Waterfowl (Duck, Coot and Geese): All hunt units.

- State Seasons*
- Morning (until 12 noon) hunting only.
- All day hunting permitted for geese (all applicable species) after January, 2010 closing of duck season through end of State conservation season.
- State bag limit(s) apply.
- Only non-toxic shot may be possessed or used.
- Hunters must pick up and remove their spent shell casings and boxes from the refuge to prevent littering.
- Decoys, blinds, boats, and all other equipment must be removed daily by 1 pm.
- Boats are prohibited on the Refuge from 12 am - 4 am.
- Waterfowl hunters may enter the Refuge no earlier than 4 am.
- Cutting of holes or other manipulation of vegetation (e.g., cutting bushes, mowing, weed-eating, etc.) or hunting from manipulated areas is prohibited.
- Retriever dogs are allowed.

Waterfowl (Special Youth Quota Permit Hunt):

Bayou DeView Unit. Available only to youth under 16. Application must be received by October 15, 2009. Visit our website for complete details: www.fws.gov/cacheriver/youthwaterfowl

Dove, Snipe and Woodcock: All hunt units: May be taken when seasons correspond with duck and/or goose seasons.* Morning (until 12 noon) hunting only. Dogs may be used to locate and retrieve game birds.

Small Game

Squirrel: All hunt units. September 5, 2009 - February 28, 2010* Dogs permitted beginning December 1, 2009. Spring season closed.

Rabbit: All hunt units. September 5, 2009 - February 28, 2010* Dogs permitted beginning December 1, 2009. Spring season closed.

Quail: All hunt units. State season.* Dogs permitted.

Furbearer:

All hunt units. Beaver, muskrat, nutria, armadillo, coyote, and feral hog may be taken incidental to any refuge hunt by the use of the device appropriate for that hunt and according to any applicable state regulations.

Raccoon and Opossum: All hunt units. November 13, 2009 - February 28, 2010.* Dogs are required for hunting raccoons/opossum at night. Use of horses/mules is prohibited. Field trials and organized training events are prohibited.

Big Game

For all deer and turkey harvested on the refuge, Zone 095 must be immediately recorded on your hunting license, and all deer must be telechecked by calling 1-877-507-GAME(4263).

Only Shotguns with slugs, legal pistols, and muzzleloaders shooting a single projectile may be possessed and used during the Youth Gun Deer Hunt and Quota Gun Deer Hunt on the Dixie Farm Unit Waterfowl Sanctuary and adjacent Waterfowl Hunt Area and the Plunkett Farm Unit Waterfowl Sanctuary. The use of dogs is prohibited.

Only portable stands capable of being carried by one person may be used and the owner's name and address must be permanently affixed to the stand. Stands may be erected 7 days prior to the refuge deer season and must be removed from the waterfowl sanctuary prior to November 15 and from the rest of the Refuge by the last day of archery season.

Deer Limits and Refuge Legal Buck Definition

For all refuge hunts, the limit is one either-sex deer per hunt, except for the archery season in which the statewide bag limit of three applies. The total number of bucks that can be harvested through a combination of all refuge hunts is two. A legal buck on the refuge is defined as any male deer (**no antler restriction**). Deer harvested on the refuge are NOT bonus deer.

Deer (Archery/Crossbow):

All hunt units: October 1, 2009 - February 28, 2010.* Either sex. State limit applies.

Deer (Muzzleloading):

All hunt units: October 17-21, 2009 and December 29-31, 2009. Either sex. One deer limit refuge wide, each hunt.

Deer (Youth Gun):

All hunt units. November 7-8, 2009. Either sex. One deer limit refuge wide.

Deer (Quota Gun):

All hunt units. Quota hunt permit required. November 14-17 and 20-22, 2009. Either sex. One deer limit refuge wide.

To apply for a Quota Gun Deer Hunt permit:

- Quota permits issued first come, first serve.
- 2000 permits available.
- Permit request must be sent via regular/first class U.S. Mail (priority/overnight/FedEx or in person will NOT be accepted).
- Request must be postmarked between August 1 and August 31 or until all permits have been issued, whichever comes first.
- On a postcard or index card, print the full name (first, middle, last), mailing address and telephone number of the permit holder, and which refuge you are requesting (Cache River or Bald Knob).
- Please print. Duplicated, unclear, or incomplete applications will be returned.
- Send a money order or cashier's check for \$12.50. No personal checks, cash, or credit cards.
- Parties of no more than 5 people will be accepted.
- Please include the full names (first, middle, last), individual mailing addresses, and individual telephone numbers for each person in your party.
- Please send one money order for party request. Number of applicants X \$12.50.
- Mail request to: Central Arkansas Refuges, 26320 Highway 33 South, Augusta, AR 72006
- Permits are non-transferable and non-refundable.

Cache River National Wildlife Refuge
U.S. Fish and Wildlife Service
26320 Highway 33 South
Augusta, AR 72006
870/347 2614
<http://www.fws.gov/cacheriver>
<http://www.tws.gov/southeast>

U.S. Fish & Wildlife Service
1 800/344 WILD

August 2009



2009-2010 General Hunting Permit – Cache River NWR

This permit must be signed to be valid. Permit expires 6/30/2010. It must be carried by the hunter during the hunts. NOTE: Quota Permit also required for quota gun deer hunt.

I have read and understand the refuge hunting regulations and realize that hunting on the refuge is a privilege and willingly agree to allow USFWS Officers to inspect or search all equipment used during my hunt.

Signature (Permit not transferable)

General Introduction

Cache River National Wildlife Refuge, established in 1986, is one of over 548 national wildlife refuges administered by the U.S. Fish and Wildlife Service. The primary objective of the Refuge is to provide habitat for migratory waterfowl and preserve the remaining tracts of bottomland hardwoods in the Cache River Basin. The Refuge is comprised of numerous tracts of land along Cache River and Bayou DeView in the Arkansas counties of Jackson, Woodruff, Prairie, and Monroe.

Public use, hunting, and fishing are allowed under carefully controlled conditions in order to maintain wildlife populations at levels compatible with the ecosystem. This permits the wise use of a valuable natural resource and provides wholesome recreational opportunities for the public. Users of the Refuge must obey all signs pertaining to visitation, access, and public use regulations. All public uses, including hunting and fishing, are conducted in accordance with state and federal regulations as supplemented by the following special refuge regulations.

Access and Vehicle Use

Cache River National Wildlife Refuge is in the acquisition phase and the attached map shows the current ownership at the time of printing this brochure. Isolated land tracts that have been purchased are scattered throughout the acquisition zone and have been posted with refuge boundary signs and marked with yellow boundary paint. Access to many of these refuge lands is currently through private lands and all refuge visitors should obtain permission from adjacent landowners prior to crossing private land to reach refuge lands.

The Refuge is closed to all other entry and public use November 14 – 17 and 20 – 22, 2009, during the Quota Gun Deer Hunt.

Waterfowl sanctuaries, indicated on the refuge map, are closed to all entry and public use from November 15 through February 28.

Most refuge roads are open to the general public. However, roads may be closed at any time road conditions or other administrative needs warrant. A locked gate or other barrier, road closed sign, or no vehicle sign means the road is closed to **all** vehicle travel, but not to foot travel unless signed otherwise.

All vehicles must stay on maintained roads or established parking areas and meet all applicable federal and state

requirements regulating the use of a licensed motor vehicle. Modified vehicles equipped with oversize tractor lug tires are prohibited.

Recreational use of ATVs is not allowed. ATVs may only be used to provide access for hunting. ATVs may only be used on roads, trails, or established parking areas designated for ATV use. An ATV is defined as a vehicle with a maximum tire pressure of 15 psi, maximum dry weight of 1550 lbs., and with tires having a maximum centerline lug depth of one inch. Only those vehicles originally designed by their manufacturer to be ATVs are allowed; mini-trucks or other modified off-road vehicles are prohibited.

Horses/mules, personal watercraft (e.g., jet-ski, etc), hover craft, and airboats are prohibited.

General Refuge Regulations

Public use of the Refuge is permitted throughout the year. Permitted activities are hunting, fishing, wildlife observation, photography, environmental education, and interpretation.

Refuge permits are required for all hunting activities. Permits are nontransferable and must be signed by the hunter and carried at all times by anyone on refuge land in possession of hunting gear. A permit can be found on the front of this brochure.

Nighttime use is limited to fishing, frogging, and/or raccoon/opossum hunting and the appropriate tackle/gear must be possessed.

Commercial activities

No person, including but not limited to a guide, guide service, outfitter, club, or other organization, shall provide assistance, services, or equipment on the refuge to any other person for compensation unless such guide, guide service, outfitter, club, or other organization has obtained a Special Use Permit from the Refuge. For the purposes of this regulation, any fees or services rendered to a person for lodging, meals, club membership, or similar services will also be considered compensation.

Anyone planning to pursue any other commercial activity (e.g., fishing, filming, photography, collecting acorns, etc.) on refuge land, lakes, streams or waters, or on adjacent waters where riparian rights may be vested with the Refuge is required to first obtain a refuge Special Use Permit.

Prohibited activities include:

- Camping, including mooring houseboats to refuge property

- Building fires

- Cutting or defacing trees, shrubs, or other plants

- Littering (including, but not limited to, shotgun shell hulls and cigarette butts).

- Searching for or removal of artifacts

- Horseback riding

- Possession or use of fireworks

- Target practice

- Taking or possessing turtles or mollusks

- Possession, use, or manufacturing of illegal drugs

- Artificial light may not be used to locate wildlife, except as authorized for frogging and raccoon/opossum hunting.

- Possession or use of firearms, archery equipment, and crossbows is prohibited, except during refuge hunts that allow use of those devices.

Only biodegradable materials may be possessed or used to mark trails. All materials should be removed from the Refuge following the hunt.

The use of audio devices, electronic callers, recordings or similar artificial devices for simulating the call of the Ivory-billed Woodpecker or any other bird (except for Snow Goose hunting under State Conservation Order) is prohibited.

Sport Fishing and Frogging Regulations

Sport fishing and frogging are permitted year-round in accordance with state regulations. Crawfish may be collected for personal use only. All crawfish traps must have the owner’s name and address permanently affixed. Boats with the owner’s name and address permanently displayed or valid registration may be left on the refuge from March 1 through October 31.

Commercial fishing requires a refuge Special Use Permit.

General Hunt Regulations

Hunter orange must be worn in accordance with Arkansas Game and Fish Commission regulations during *Quota Gun and Muzzleloader Deer hunts*.

Bag limits for all species except deer are the same as state limits unless specified otherwise.

Stop Poaching Hotline 1-800-482-9262

Mobility-impaired hunters

Mobility-impaired hunters may apply for a Special Use Permit allowing the use of ATVs on existing refuge roads. Issuance of the permit is restricted to persons who are permanently confined to a wheelchair, require the use of mechanical aids (braces, crutches, or walkers) to walk, or have complete single leg amputations. For more information, please call the refuge office at 870/347 2614.

Firearms

Firearms are prohibited on the Refuge, except during refuge hunts. Firearms must be completely unloaded, including chamber and magazine and caps on muzzleloaders, when carried in/on land vehicles or boats under power. Hunters accessing WMAs or private lands by crossing the refuge must transport firearms unloaded and cased.

Only non-toxic shot or rimfire rifles may be possessed and used for all small game hunting. The possession or use of buckshot is prohibited.

Prohibited hunting activities include:

- Trapping

- Driving or screwing any metal object into a tree or hunting from a tree in which a metal object has been driven or screwed to support a hunter.

- Building or hunting from permanent blinds.

- Hunting from a vehicle or use of a vehicle as a deer stand.

- Possession or distribution of bait or hunting over bait, salt, grain, or other feed that could serve as a lure or attraction for wildlife.

- Hunting from mowed or maintained roads (except for waterfowl hunting while roads are flooded).

- Possession or use of alcoholic beverages while hunting.

- Hunting, taking, possessing, or attempting to take wildlife with an unauthorized guide, guide service, outfitter, club, or organization providing assistance, service, or equipment. (See Commercial Activities Section.) It is your responsibility to verify that the guide, guide service, etc. has obtained the required Special Use Permit.

Hunters under the age of 16

Hunters under the age of 16 must be supervised by an adult not less than 21 years old and must remain in sight and normal voice contact with the adult. For small game/waterfowl hunts, the adult may supervise no more than two youths. For big game hunts, the adult may supervise only one youth.

A hunter born after 1968 must carry a valid Hunter Education Card. Hunters under the age of 16 do not need a card if they are under the direct supervision (within arm’s reach) of a holder of a valid hunting license at least 21 years of age. Home state Hunter Education Cards will be honored.

Refuge Hunting Unit Boundaries

The refuge is divided into three hunt units. These are:

- Unit I - refuge lands between Highway 79 and Interstate 40;

- Unit II - All refuge lands east of Highway 33 between Interstate 40 and Highway 18 at Grubbs, AR;

- Unit III - all refuge lands west of Highway 33 from Interstate 40 to Highway 64.

Refuge lands are located in Flood Prone Regions B, C, and D. The descriptions of Flood Prone Regions B, C, and D are in the AGFC hunting pamphlet.

Refuge lands in Flood Prone Region C will close to all deer hunting when the Cache River gauge at Patterson exceeds 10 feet, as reported by the National Weather Service at <http://www.srh.noaa.gov/data/LZK/RVSLZK> and reopen when the same gauge reading falls below 8.5 feet.

Refuge lands located in Flood Prone Region B will close to all deer hunting when the White River gauge at Augusta reaches 31 feet, as reported by the National Weather Service at <http://www.srh.noaa.gov/data/LZK/RVSLZK>. This restriction is lifted when the gauge at Augusta falls below 30 feet **and** the White River gauge at Georgetown falls to or below 19 feet.

Refuge lands located in Flood Prone Region D will close to all deer and turkey hunting when the White River gauge at Clarendon reaches 28 feet, as reported by the National Weather Service at <http://www.srh.noaa.gov/data/LZK/RVSLZK> and will reopen the same gauge reading falls to or below 27 feet.

Turkey (Fall Gun): All Units closed.

Turkey (Fall 2009 Archery/Crossbow): October 1, 2009 - February 28, 2010.*

Turkey (Spring 2010 Gun): Unit I and III: Same as state season. Unit II: closed with the exception of those refuge lands included in the combined Black Swamp WMA/Cache River NWR quota permit hunts administered by the Arkansas Game & Fish Commission.

Take pride in your refuge.

Don't litter.

Report violations.

Signs Protect Visitors and Resources

Millions of people visit national wildlife refuges each year. The impact of human activity, if not regulated, can degrade these wildlands. Signs control recreational activities while protecting natural resources on the Refuge. Please respect the refuge signs identified in this brochure.



Refuge boundary sign. Public use permitted in accordance with refuge regulations.



Area closed to all public use. Some areas such as waterfowl sanctuaries are only seasonally closed. Seasonally closed areas have the specific closure dates printed on the face of the sign.

Hunting Seasons

Deer – Archery

October 1, 2009 – February 28, 2010

Deer – Muzzleloader

October 17 – 21, 2009
December 29 – 31, 2009

Deer – Youth Modern Gun

November 7 – 8, 2009

Deer – Quota Gun Deer Hunt

November 14 – 17 and 20 – 22, 2009

Squirrel & Rabbit

September 5 – February 28, 2010

Raccoon & Opossum

November 13, 2009 – February 28, 2010

Quail

November 1, 2009 – February 7, 2010

Turkey – Spring Firearms

Hunt Unit 1 – State Seasons
Hunt Unit 2 – Black Swamp Permits Only
Hunt Unit 3 – State Seasons

Turkey – Fall Archery

October 1, 2009 – February 28, 2010

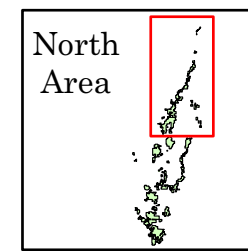
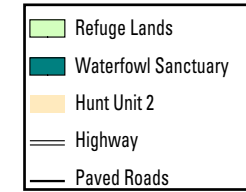
Waterfowl

State Seasons – Morning hunt only

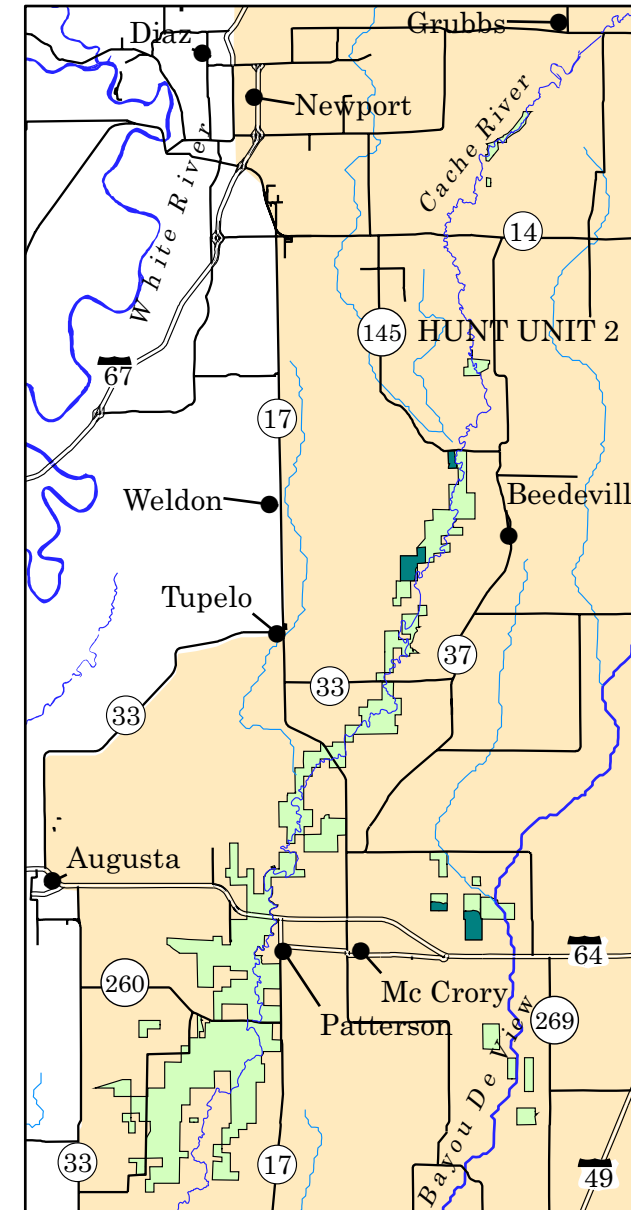
Dove, Snipe and Woodcock

(Permitted when seasons correspond with waterfowl seasons - Morning hunt only)

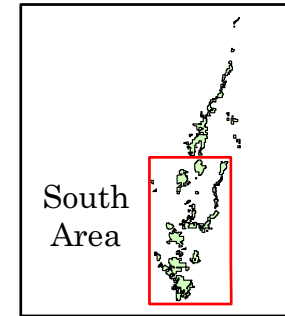
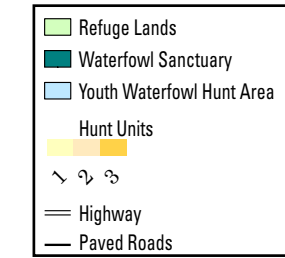
Cache River National Wildlife Refuge North Area



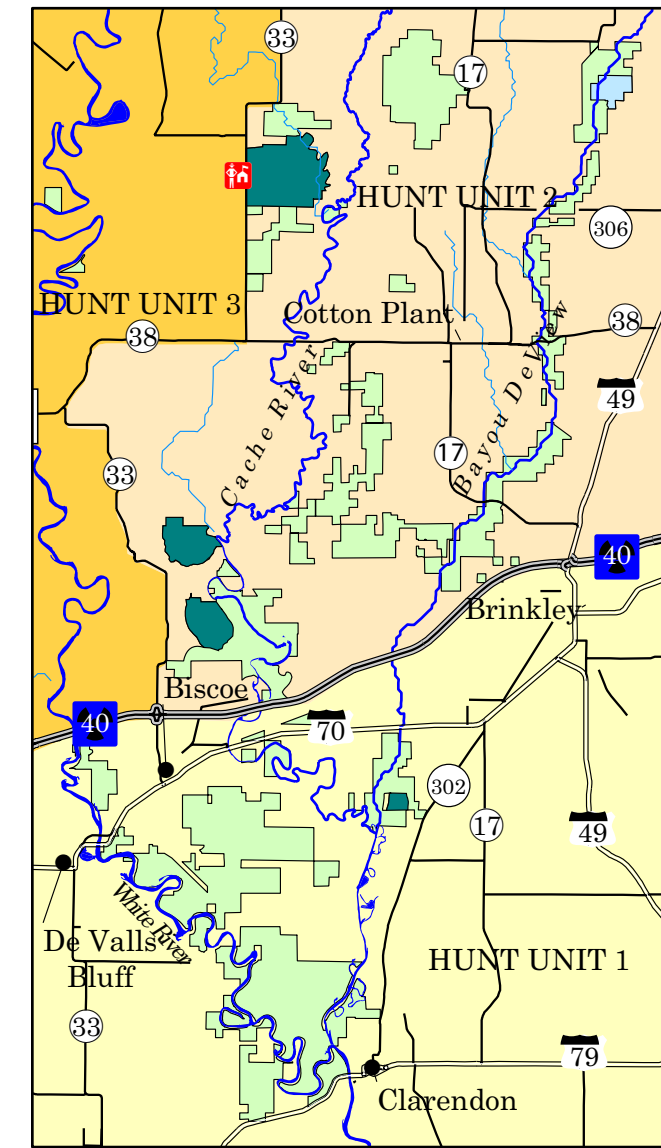
1 inch equals 5.7 miles



Cache River National Wildlife Refuge South Area



1 inch equals 5.7 miles

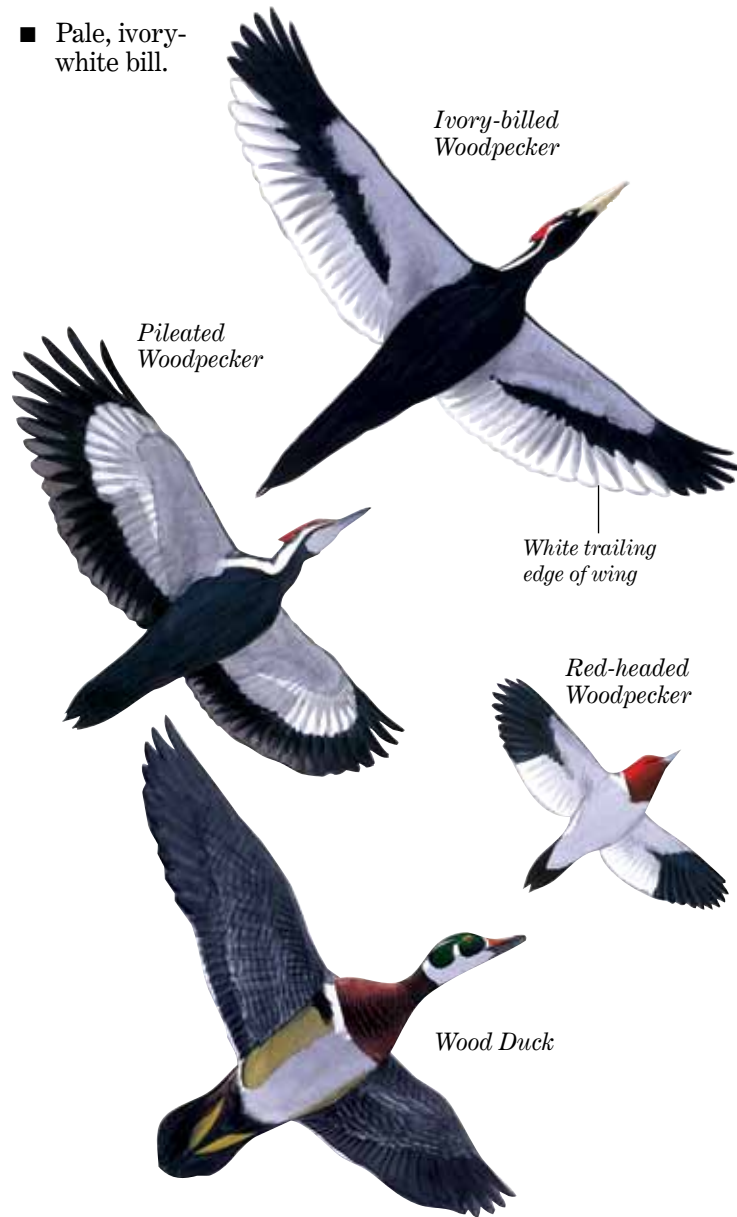


Identifying Field Marks of an Ivory-billed Woodpecker and Similar Birds

In flight - view from below

Distinct Ivory-billed Woodpecker characteristics:

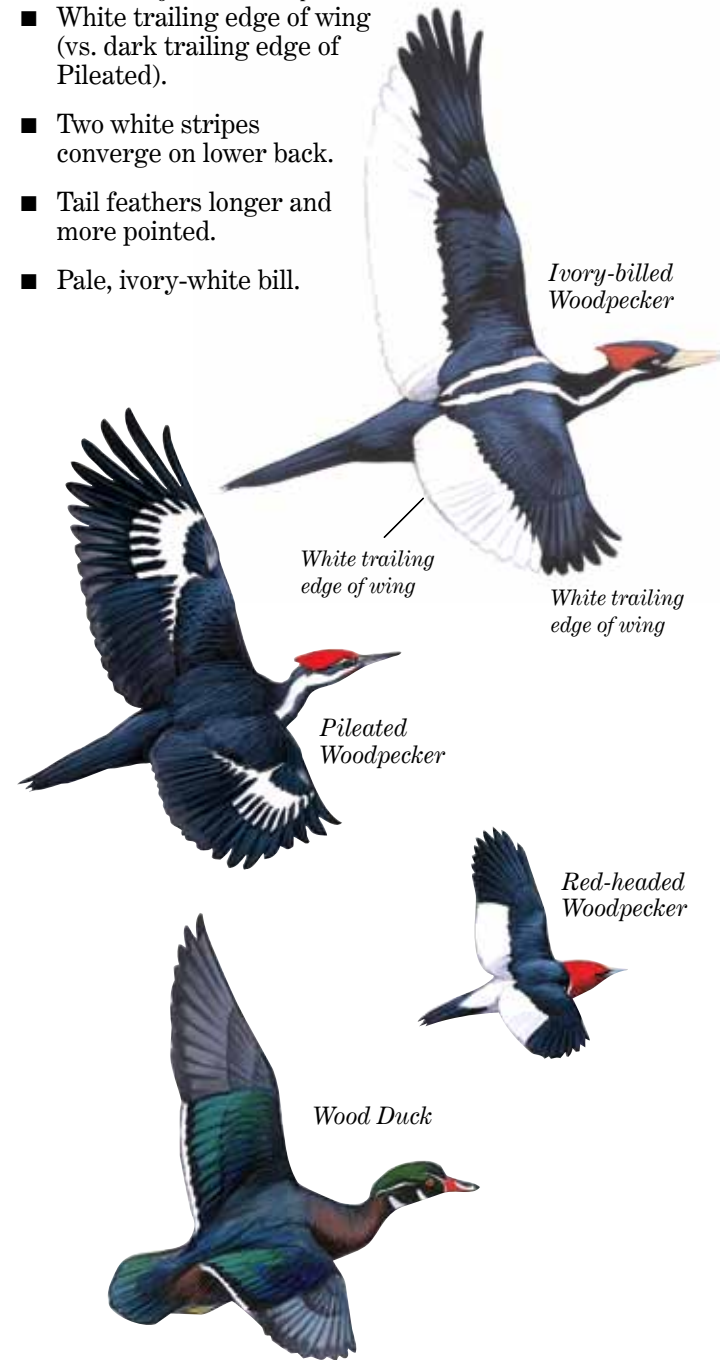
- White trailing edge of wing (vs. dark trailing edge of Pileated).
- Wing more slender than Pileated.
- Tail feathers longer and more pointed.
- Pale, ivory-white bill.



In flight - view from above

Distinct Ivory-billed Woodpecker characteristics:

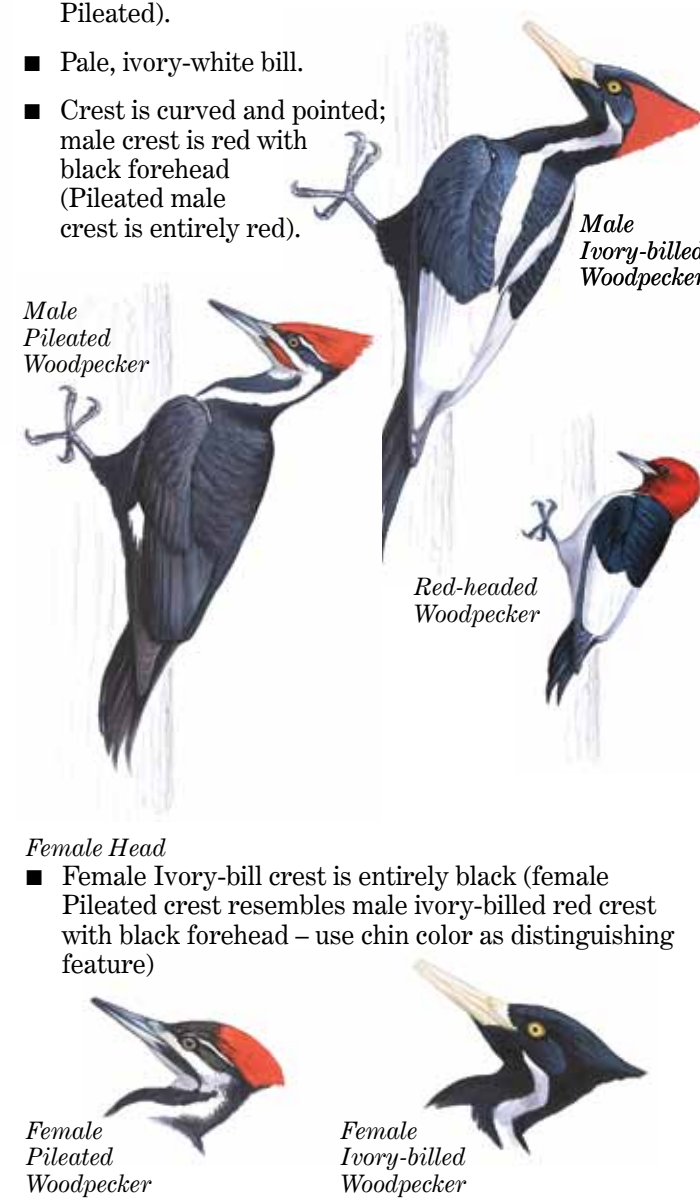
- White trailing edge of wing (vs. dark trailing edge of Pileated).
- Two white stripes converge on lower back.
- Tail feathers longer and more pointed.
- Pale, ivory-white bill.



At rest

Distinct Ivory-billed Woodpecker characteristics:

- Two white stripes converge on lower back.
- Entirely white secondary feathers obvious as white patch or shield.
- Largely dark face and dark chin (vs. white chin of Pileated).
- Pale, ivory-white bill.
- Crest is curved and pointed; male crest is red with black forehead (Pileated male crest is entirely red).



Guidelines for recording a sighting

If you believe you may have seen an Ivory-billed Woodpecker, immediately after the sighting, make a drawing of what you saw, noting the following characteristics:

- Color of trailing edge of wing (white vs. black)
- Crest and forehead color
- Bill color
- Chin color
- Relative size
- Vocalizations
- Habitat

If you are with someone else, individuals should make their own notes without conferring with each other.

Please report any sightings to refuge officials and to the Cornell Lab of Ornithology via its website: <http://www.birds.cornell.edu/ivory>

Please bookmark these important websites:

<http://www.fws.gov/ivorybill>
Information on the recovery of the Ivory-billed Woodpecker

<http://www.fws.gov/cacheriver>
Up-to-date information on refuge public use and regulations

<http://www.agfc.com>
Arkansas hunting regulations

<http://www.birds.cornell.edu/ivory>
To report sightings of the Ivory-billed Woodpecker