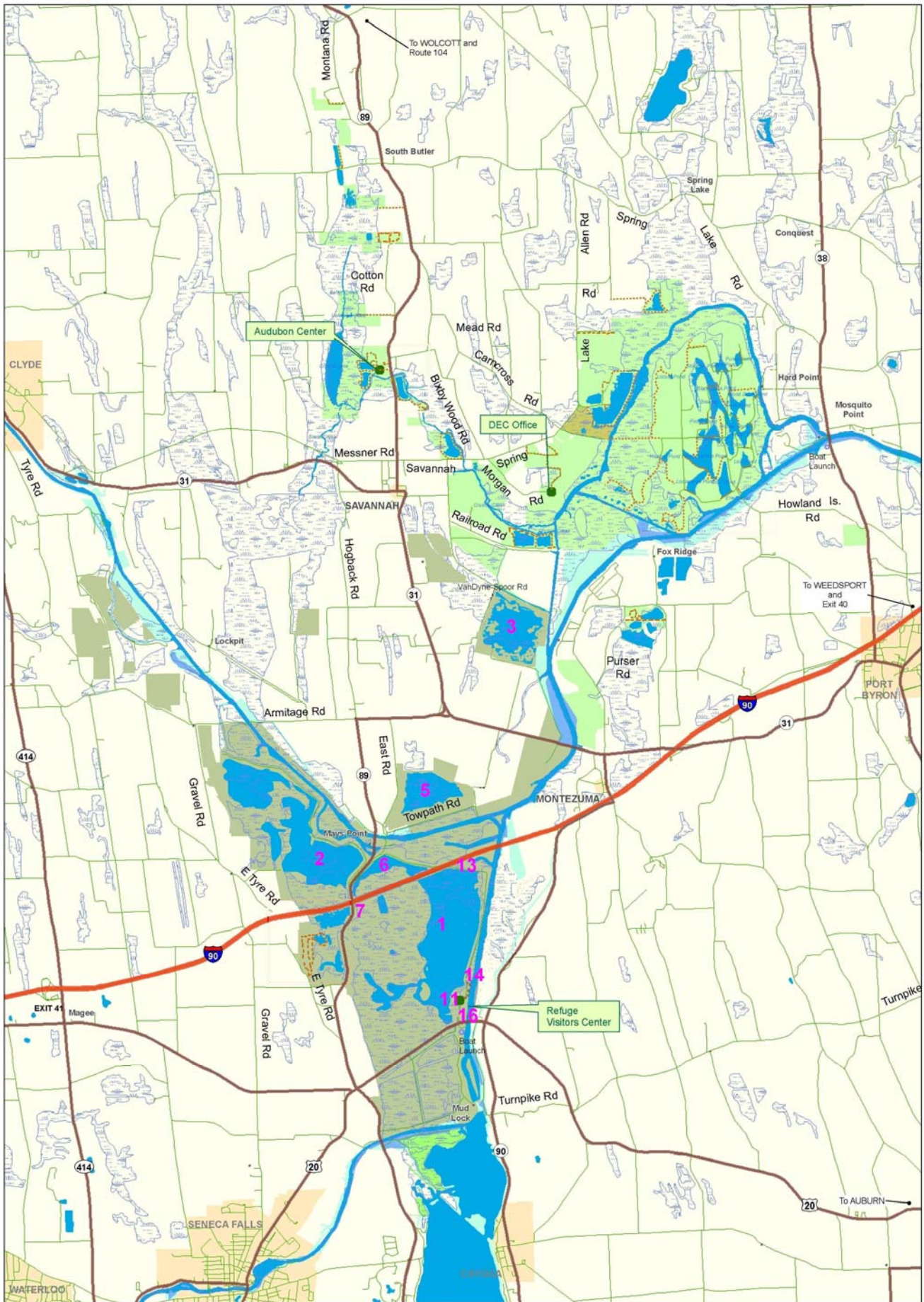


2009 Management Plans for Montezuma Wetlands Complex Impoundments

Impoundments on the Montezuma Wetlands Complex are managed to provide high quality mudflat and freshwater emergent marsh and open water wetland habitats dominated by native plants. These impoundments are primarily managed to provide habitat for migrating waterfowl and shorebirds, and breeding marshbirds and bald eagles. This is accomplished through water level controls that rely on precipitation and water levels in surrounding water bodies. Some impoundments have reliable water sources throughout the year whereas others have reliable water sources for only part of the year. Some impoundments can be drained any time, and others are limited by their bathymetry or surrounding water levels. The following table is intended to provide information as to the intentions of NYSDEC and USFWS wildlife managers. We will use adaptive management to respond to changing conditions that alter our ability to achieve habitat objectives. For more information regarding impoundment management on the Montezuma National Wildlife Refuge, please refer to the Habitat Management Plan available on the refuge website: <http://www.fws.gov/r5mnwr/>.

Summary of planned management in each impoundment for 2009 and the habitat/wildlife objective each action is intended to meet.

Map #	Land Owner	Unit	Acres	Summary of Management Actions	Habitat/Wildlife Objectives					
					Emergent Hemi-Marsh – Spring Migrating Waterfowl	Emergent Hemi-Marsh – Fall Migrating Waterfowl	Shallow Water Mudflats - Spring Migrating Shorebirds	Shallow Water Mudflats - Fall Migrating Shorebirds	Open Water - Bald Eagles & Diving Ducks	Emergent Marsh - Breeding Marshbirds
1	FWS	Main Pool	1,663	Drain May.	X	?	X			
2	FWS	Tschache Pool	1,270	Full pool.	X	X			X	X
3	FWS	Sandhill Crane Unit	448	Half pool.	X	X	X		X	X
4	DEC	Howland's Island Ponds, Mulligan and M&M, Martens, Helmer, South Butler	350	Full pool.	X	X			X	X
5	FWS	Knox Marsellus and Puddler Marshes	323	Full pool or slow drain late summer.	X	X		?	?	X
6	FWS	May's Point Pool	199	Slow drain early August.	X	X		X		X
7	FWS	Millennium Marsh	70	Drain May.	X	?	X			
8	DEC	MAC – South Pool, Frost Hill Marsh, Teal Pond	50	Drawdown April, July.	X	X	X	X	X	X
9	DEC	Howland's Island Ponds (misc.)	50	Slow drain April/May.	X	X	X	X		
10	DEC	Colvin East, South Butler	35	Restore.				?	X	
11	FWS	Visitor Center Wetland	26	Drain April/May. Disk summer. Shallow flood summer.	X	X	X	X		
12	DEC	Malone 1	20	Repair WCS.	X	?		?	X	X
13	FWS	Benning Marsh	18	Drain June.	X	?		X		
14	FWS	Lesser Yellowlegs	8	Limited management capability.	X	?	X	?		?
15	DEC	Muckrace Flats	5	Drain April, July.			X	X		
16	FWS	Display Pool	2	Drain July.	X	?		X		



Numbers on map correlate with numbers on the above table.