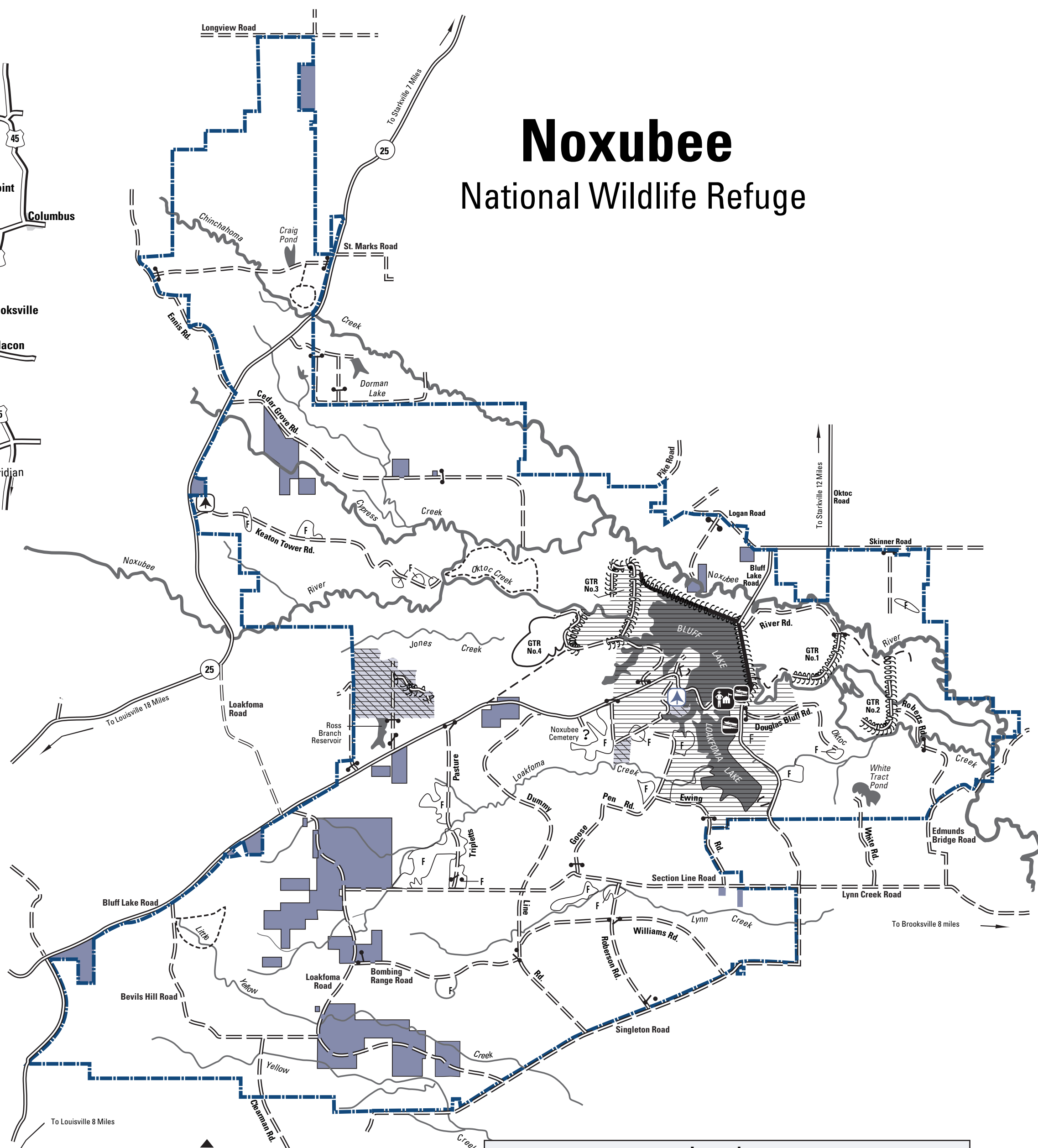
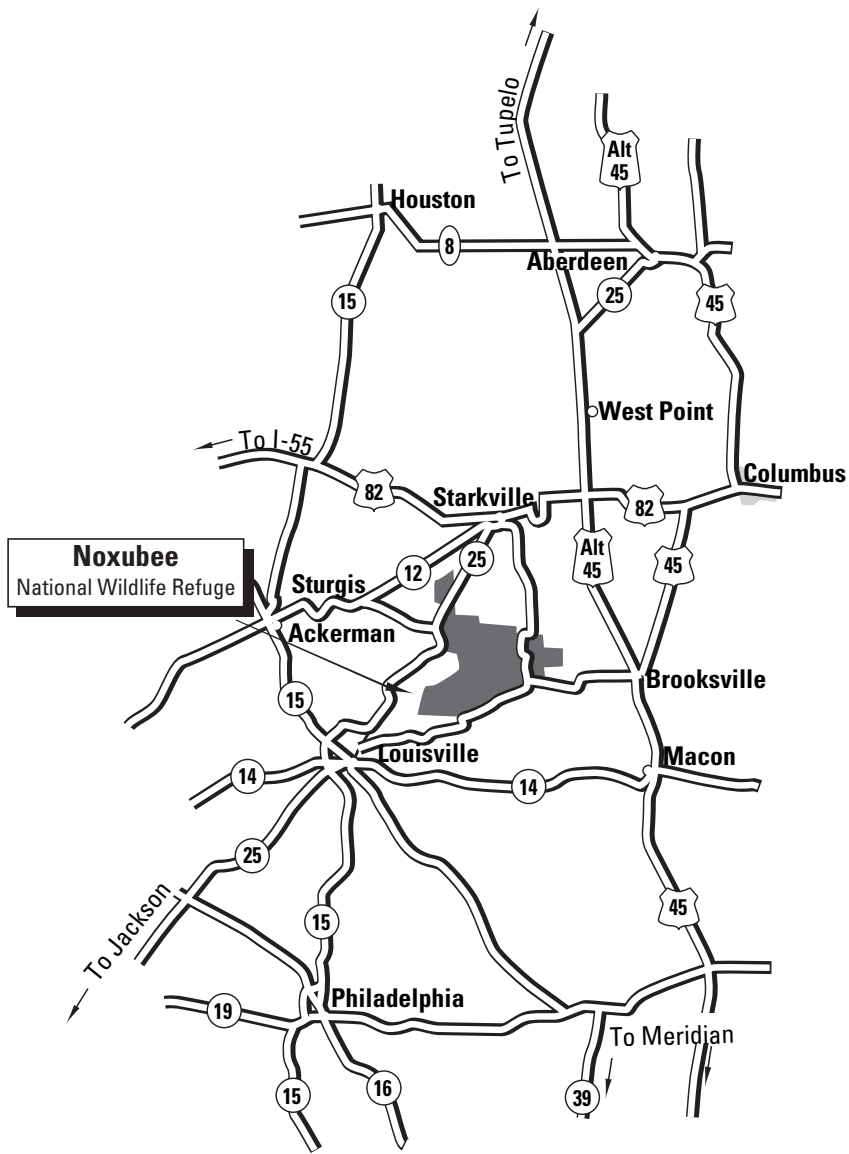


Noxubee National Wildlife Refuge



Signs Protect Visitors and Resources



This sign delineates the refuge boundary. Entry is permitted only for authorized uses (hunting, fishing, sightseeing, etc.) in accordance with refuge regulations.



This area is closed to **all** entry. No hunting, fishing or sightseeing is permitted. No roads or trails are open to the public (See map.)



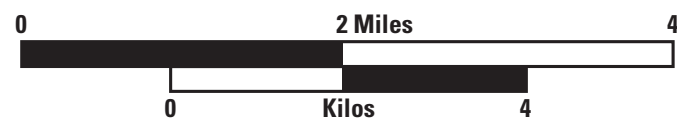
This area is closed to all entry due to proximity of eagle nest. No hunting, fishing or sightseeing is permitted.



This area is closed to **all** hunting. Firearms and archery equipment are strictly prohibited. (See map.)



GTR's #1, 2 and #4 have been designated as Steel Shot Zones to protect waterfowl feeding in these areas. All small game hunters using shotguns in these zones may use and possess **only** approved non-toxic shot shells. (See map.)



Legend			
	Refuge Headquarters		Closed Area (All Entry Prohibited)
	Green Timber Reservoir		Unimproved Road
	Field		Trail
	Refuge Boundary		Levee
	Non-Refuge Lands		Gate Closed Oct. 1–May 1
	No Hunting Zone		Gate Closed all year
	Turkey Check Station		Boat Ramp
	Deer and Turkey Check Station		Hunting Outside the Boundary