



New York & Long Island Field Offices

<http://nyfo.fws.gov>
2009



Congressional District 2: Steve J. Israel

West Sayville Federal Aviation Administration (FAA) Site Survey Completed The New York Field Office (NYFO), in conjunction with the Long Island Field Office (LIFO), completed a pre-acquisition contaminants survey for this property located near Islip on Long Island. The Long Island National Wildlife Refuge then successfully added this former FAA property to the refuge principally to protect a Federally-listed grassland species, the sandplain gerardia (*Agalinis acuta*). All prior



contaminant issues (PCBs, asbestos) have been remedied. The LIFO is the recovery lead for *gerardia* and is working on the species Status Review. Several potential outcomes to that review are under consideration and include incorporation of new information about the species genetic makeup and its relatedness to a similar species in the South.

Fire Island Inlet to Montauk Point Reformulation (FIMP) The LIFO continues to provide technical assistance in accordance with the Fish and Wildlife Coordination Act, Migratory Bird Treaty Act, and Endangered Species Act regarding the potential impacts of the FIMP on fish and wildlife. In the period of time from January 2007 to the present, we provided formal input to the U.S. Army Corps of Engineers (Corps) regarding the Draft Executive Summary Formulation Report, which provided information on the alternatives the Corps proposed to advance; comments on an early draft long-term management plan to protect listed species; a detailed report describing the current status of fish and wildlife and habitats within the project area; recommendations for types of compensatory mitigation we would like the Corps to further develop; and provided habitat restoration location options that we identified within the project area in close coordination and consultation with the landowners and managers.



FIMP - Issues in need of Clarification From the U.S. Fish and Wildlife Service's (USFWS) perspective, there are several issues still in need of further clarification. At this time it is unclear whether the non-structural and structural components of this planning effort represent the full and total sum of all plans for the 50-year planning period or whether additional impacts to fish and wildlife, including listed species, can be anticipated from locally sponsored beach fill/dune building, groin construction, jetty modifications, etc., (themselves requiring Corps permits). It is also unclear whether Federal Emergency Management Agency (FEMA)-funded storm damage mitigation will be provided that goes beyond what the FIMP comprehensive storm damage reduction plan calls for.

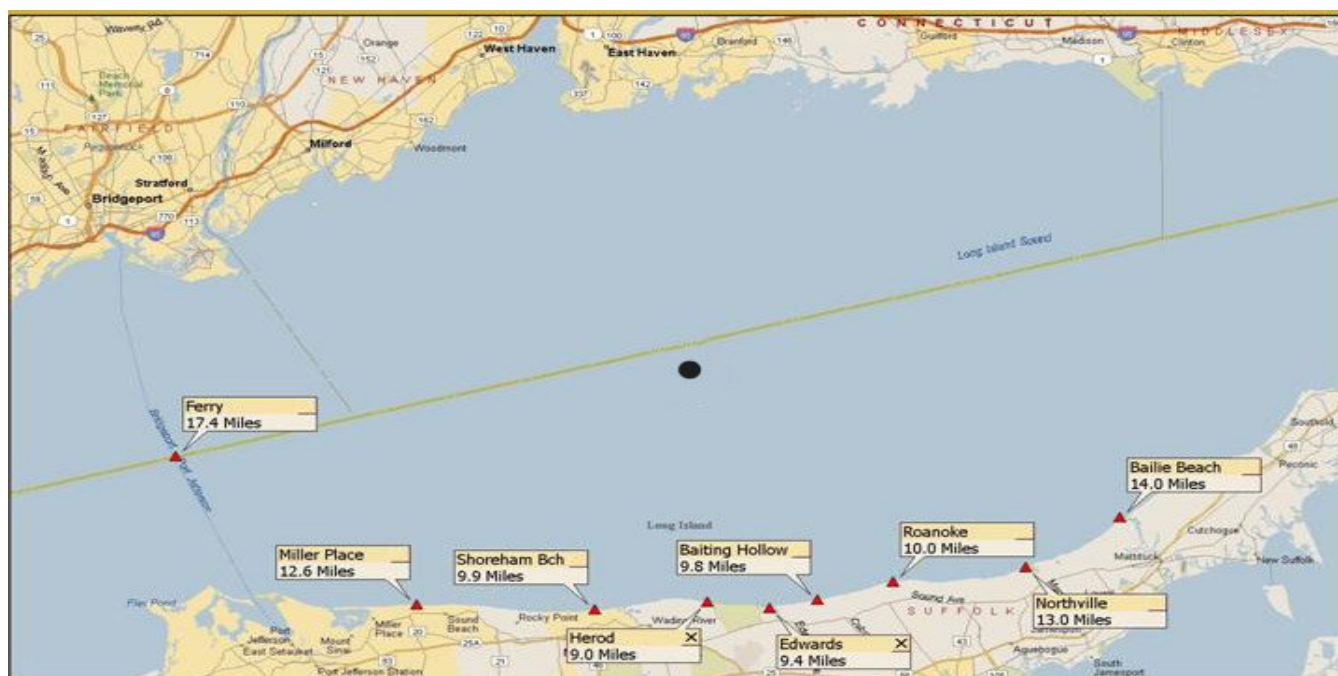


Piping Plover Conservation The LIFO continues to work with virtually all of the major land managers on Long Island on the annual protection and management efforts. In the west, the LIFO works closely with the Silver Point and Sun and Surf Beach Clubs which occupy lands via lease from Nassau County, as well as Town of Hempstead beaches on the eastern end of Long Beach Island at Lido and Nickerson Beaches.



On Fire Island, the LIFO has worked closely with the managers at Robert Moses State Park, the Fire Island Villages, the National Park Service, and Suffolk County Department of Parks, Recreation and Conservation to ensure effective coordination and develop partnerships to address endangered species protection.

Broadwater Liquid Natural Gas (LNG) Terminal The Broadwater LNG facility is a proposed terminal for the off-loading of liquid natural gas from LNG carriers for transport to the mainland through an underwater pipeline. It would be situated in central Long Island Sound. The USFWS has expressed a number of environmental concerns to the Federal Energy Regulatory Commission (FERC). In particular, we are concerned about the effects on fish and other aquatic organisms from the terminal and LNG carriers taking in and discharging large volumes of water. Annually, the water intake of the terminal would average about 5.5 million gallons per day (mgd), with a maximum daily intake of 8.2 mgd. Discharged water would be treated with the biocide, sodium hypochlorite. The water intake of the carriers would be about 22.7 mgd, including ballast and cooling water. The terminal and LNG carriers are predicted to annually impinge/entrain between 49.8 to 101.9 million fish eggs and 67.4 million to 173.1 million fish larvae. The FERC issued approval for the Broadwater facility on March 20, 2008. However in April 2008, the New York State Department of State determined that the proposed project is not consistent with six Long Island Sound Coastal Management policies. Broadwater has appealed this determination with the Secretary of Commerce, who can overturn it. We have concurred with the Endangered Species Act determinations of both FERC and the U.S. Coast Guard that the proposed project would not be likely to adversely affect Federally-listed species under the USFWS's jurisdiction.



Safe Harbor Energy Liquid Natural Gas Terminal

On the other (south) side of Long Island is the proposed Safe Harbor Energy LNG Terminal. The proposed project consists of a constructed island approximately 16 acres in size with a disturbance footprint of approximately 116 acres, a terminal that would house an LNG receiving, storage, and regasification facility, and a 12.8-mile-long undersea pipeline. The proposed island and terminal would be located approximately 13.5 miles south of the City of Long Beach, New York (Long Island), and 23 miles southeast of the New York Harbor entrance. The USFWS is concerned about the potential impacts to listed and candidate species such as the piping plover, roseate tern and red knot. We have also requested that the developer evaluate impacts to fish as a result of loss of ocean habitat, the impact of facility lighting on birds, and the effects of the facility on entrainment and impingement of ichthyoplankton and fish.

Tidal and Wave Energy The USFWS has reviewed a number of preliminary permits to develop wave and tidal energy off the coast of New York and in the East River. The proposed technologies are new and there is a poor understanding of the likely impacts of these projects on fish and wildlife resources. Underwater turbines have the potential to cause mortality and injury to fish, birds, aquatic turtles, and mammals. Thus far, only the Roosevelt Island Project (East River) has progressed to the point of a request for a pilot license. We have been working with this developer to study potential environmental impacts in conjunction with a phased approach to turbine installation.

