

Assabet River National Wildlife Refuge  
680 Hudson Road  
Sudbury, MA 01776  
978/562 3527  
978/562 3627 fax  
<http://www.fws.gov/northeast/assabriver>

Federal Relay Service  
for the deaf and hard-of-hearing  
1 800/877 8339

U.S. Fish & Wildlife Service  
<http://www.fws.gov>

For Refuge Information  
1 800/344 WILD

March 2012

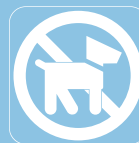
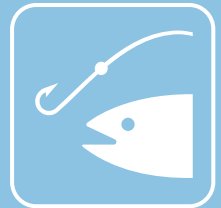


U.S. Fish & Wildlife Service

# Assabet River

## *National Wildlife Refuge*

### *Trail and Recreation Guide*



## Welcome!



This blue goose, designed by J.N. "Ding" Darling, has become the symbol of the National Wildlife Refuge System

Located along a portion of the Assabet River, Assabet River National Wildlife Refuge is one of 555 refuges in the National Wildlife Refuge System. The refuge is approximately 20 miles west of Boston in portions of the towns of Hudson, Maynard, Stow and Sudbury. It consists of several separate pieces of land: a 1,900-acre northern section, a 300-acre southern section, and 91 acres scattered along the Assabet River in Stow. The main entrance to the refuge is at 680 Hudson Road in Sudbury.

The refuge has a large wetland complex, several smaller wetlands and vernal pools, and large forested areas which are important feeding and breeding areas for migratory birds and other wildlife. It also has 15 miles of trails open to the public for the enjoyment of nature as well as a visitor center located on Winterberry Way.

A porous pavement path from the main entrance on Hudson Road to Puffer Pond, running parallel to Winterberry Way was constructed in 2010. Bicycles are allowed on the path. The refuge used porous asphalt on the path in order to allow rainwater to flow right through the path instead of running off onto adjacent surfaces. The reduction in stormwater runoff along this mile-long path is one of the new "green" actions we have taken to reduce our ecological footprint on the refuge.

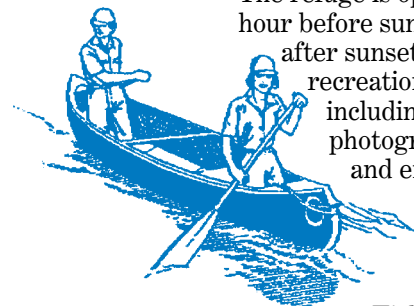
Assabet River NWR is one of eight refuges within the Eastern Massachusetts NWR Complex, which is headquartered out of Great Meadows NWR and located at 73 Weir Hill Road, Sudbury,

*Red-winged blackbird*



Massachusetts, 01776. For more information about Assabet River NWR, visit the Weir Hill office weekdays from 8:00 am to 4:00 pm, contact the Refuge Manager at 978/443 4661, go on-line to <http://www.fws.gov/northeast/assabetriver>, or visit the Friends of Assabet River NWR at [www.farnwr.org](http://www.farnwr.org).

The refuge visitor center is located at 680 Hudson Road, Sudbury, MA and is open Thursday-Sunday 10:00 am to 4:00 pm.











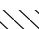
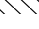

The refuge is open from one half-hour before sunrise to one half-hour after sunset. Wildlife-dependent recreation opportunities, including wildlife observation, photography, interpretation, and environmental education, are permitted on designated trails shown on this map.

Fishing and hunting are allowed subject to refuge regulations, State and Federal laws and permit restrictions. The most intense hunt period is during the shotgun deer season in the fall. Most other times, hunt pressure is generally light. Please refer to the kiosk or the refuge website for more information about hunt seasons. Fishing is allowed at Puffer Pond on Puffer Pond Trail at the Barron Fishing Access Site. Kayak and canoe access is allowed off Sandbank Trail (carry in only at this time).

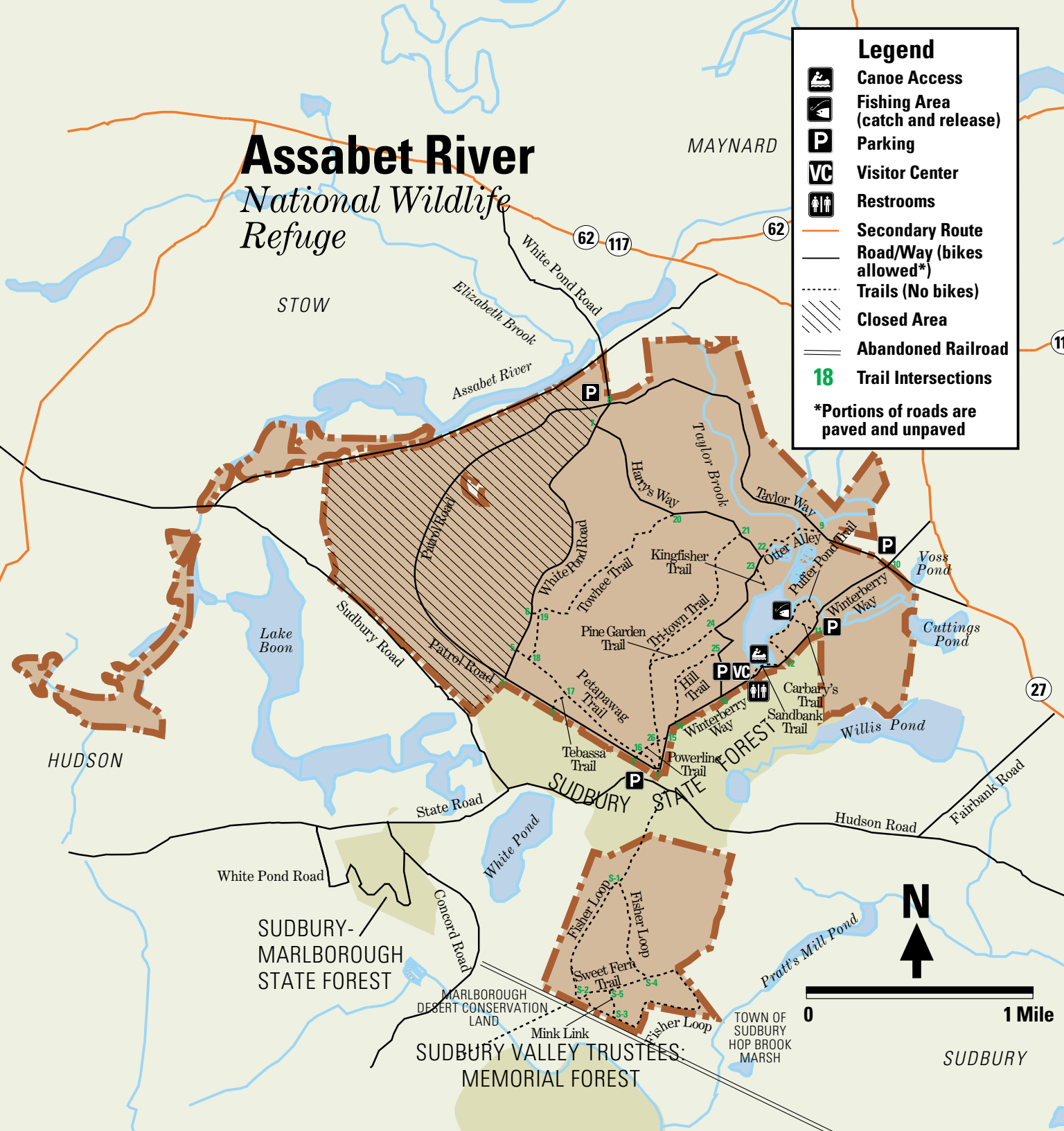
Refuge lands are closed to horses and motorized vehicles. Dogs are not allowed. There are no picnic areas or campsites on the refuge. **Bicycles are allowed on WAYS and ROADS ONLY, not any of the trails.**

# Assabet River National Wildlife Refuge

**Legend**

-  Canoe Access
-  Fishing Area (catch and release)
-  Parking
-  Visitor Center
-  Restrooms
-  Secondary Route
-  Road/Way (bikes allowed\*)
-  Trails (No bikes)
-  Closed Area
-  Abandoned Railroad
-  18 Trail Intersections

\*Portions of roads are paved and unpaved



STOW

MAYNARD

HUDSON

SUDBURY-  
MARLBOROUGH  
STATE FOREST

MARLBOROUGH  
DESERT CONSERVATION  
LAND  
SUDBURY VALLEY TRUSTEES:  
MEMORIAL FOREST

TOWN OF  
SUDBURY  
HOP BROOK  
MARSH

SUDBURY

0 1 Mile





*Pine warbler*

At this time, parking is available off Hudson Road in Sudbury, White Pond Road in Stow, and Old Marlborough Road in Maynard. Please be aware that vehicles operated by U.S. Fish and Wildlife Service and U.S. Air Force staff, volunteers and contractors, may be operating on refuge roads and trails.

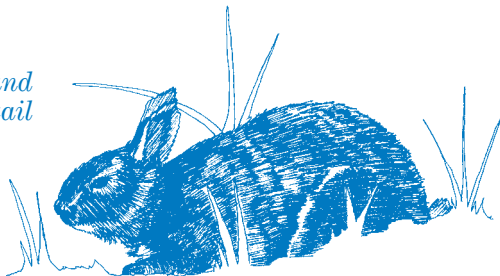
We are a “Leave No Trace” pack it in, pack it out refuge. Please help us keep the refuge clean by bringing home your trash.

A total of 15 miles of trails and roads are open for wildlife-dependent public use at the refuge. To help you plan this and future visits to the refuge, please consider the following trail lengths:

North Section

Petapawag Trail	0.9 miles
Harry’s Way	1.8 miles
Towhee Trail	1.0 miles
Hill Trail	0.4 miles
Powerline Trail	0.2 miles
Winterberry Way	1.5 miles
Patrol Road	0.8 miles
White Pond Rd	1.5 miles
Carbary’s Trail	0.1 miles
Tri-Town Trail	1.2 miles
Pine Garden Trail	0.3 miles
Otter Alley	0.3 miles
Kingfisher Trail	0.1 miles
Puffer Pond Trail	0.4 miles
Tebassa Trail	0.1 miles
Taylor Way	1.8 miles
Sandbank Trail	0.1 miles

*New England cottontail*



South Section

Fisher Loop	2.3 miles
Mink Link	0.1 miles
Sweet Fern Trail	0.3 miles

**Some suggested walks are:**

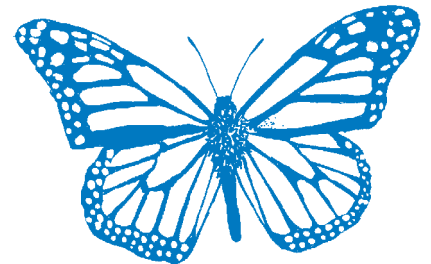
From Hudson Road entrance: enter onto Petapawag Trail and follow to Towhee Trail. Take a right onto Towhee Trail, follow to the end and turn right onto Harry’s Way. Follow a short distance and turn right onto Tri-Town Trail and follow back to parking area. This is approximately 3.5 miles. From White Pond Road entrance: Start on White Pond Road and take a left onto Harry’s Way. Follow Harry’s Way for approximately 1.5 miles and then turn right onto Pine Garden Trail. Pine Garden Trail will merge into Tri-Town Trail. Follow for a ways and turn right onto Powerline Trail. Shortly, turn right onto Petapawag Trail and follow to the end until it joins White Pond Road. Turn right onto White Pond Road and follow back to parking area. This walk is approximately 4.3 miles.

*White-tailed fawn*



The large wetland complex and the contiguous forested areas found here today are important feeding and breeding areas for migratory birds. We ask that you help conserve this unique natural habitat and minimize disturbance to wildlife by staying on designated trails.

**Have a safe and enjoyable visit to the refuge!**



*Monarch butterfly*