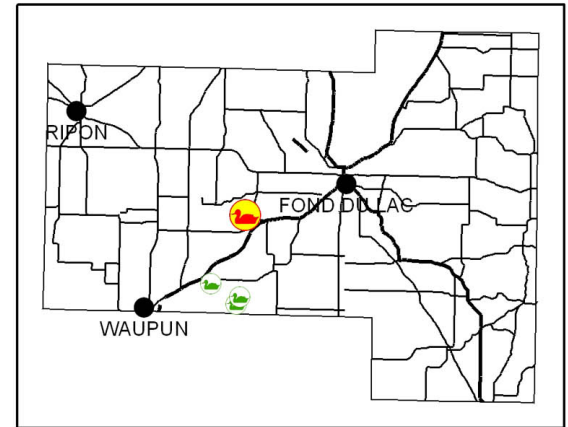
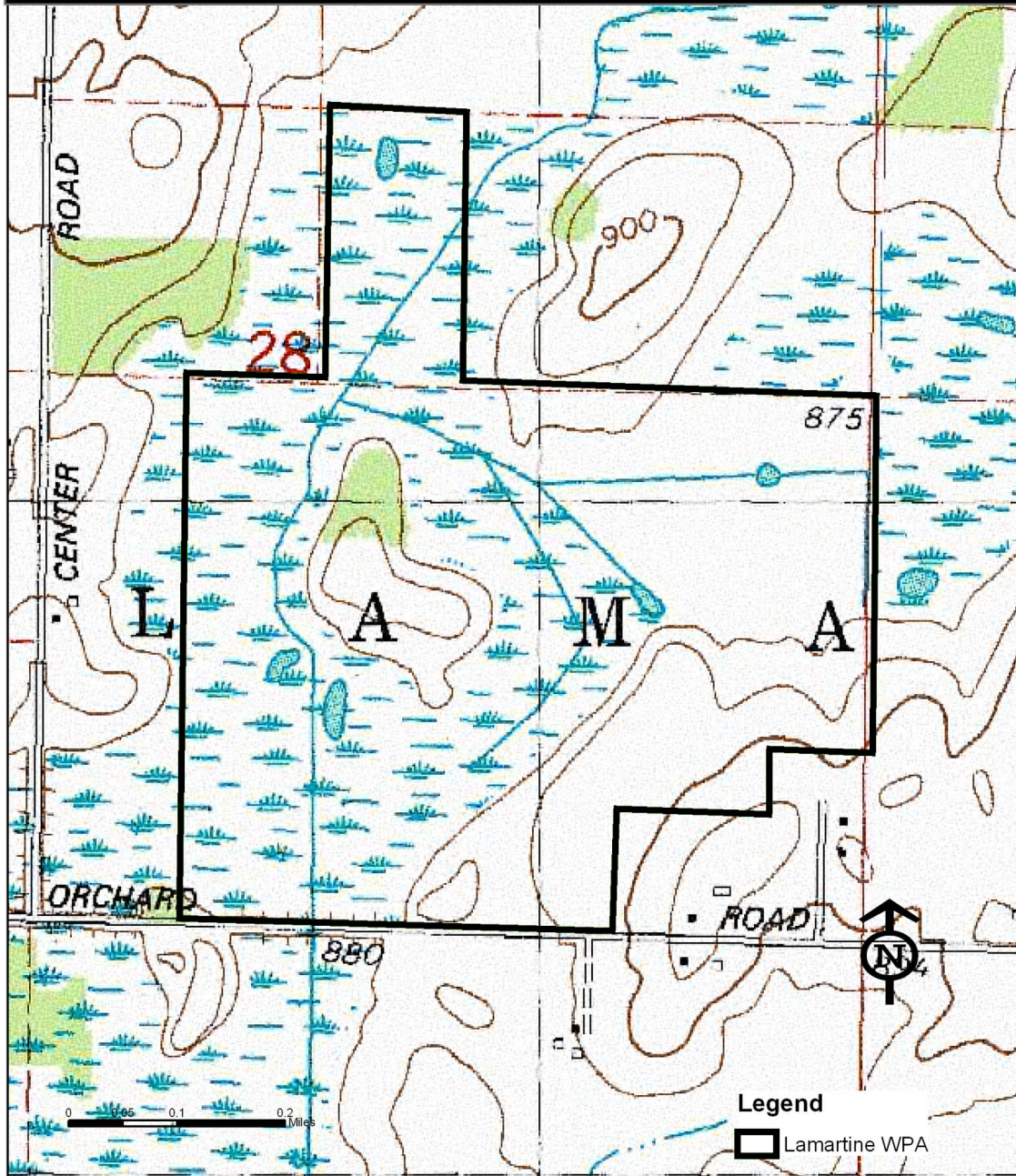


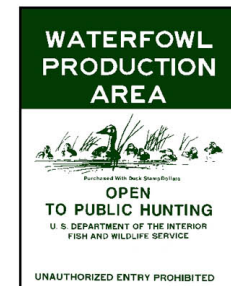
U.S. Fish and Wildlife Service

Lamartine Waterfowl Production Area (204 acres)



For more information contact:

U.S. Fish & Wildlife Service
Leopold WMD
W10040 Cascade Mountain Rd
Portage, WI 53901
Phone: (608) 742-7100
Fax: (608) 745-0866
<http://www.fws.gov/midwest/Leopold>



Notice: Errors may exist on this map.
The U.S. Fish and Wildlife Service assumes
no responsibility for the use or misuse of this
map product.

