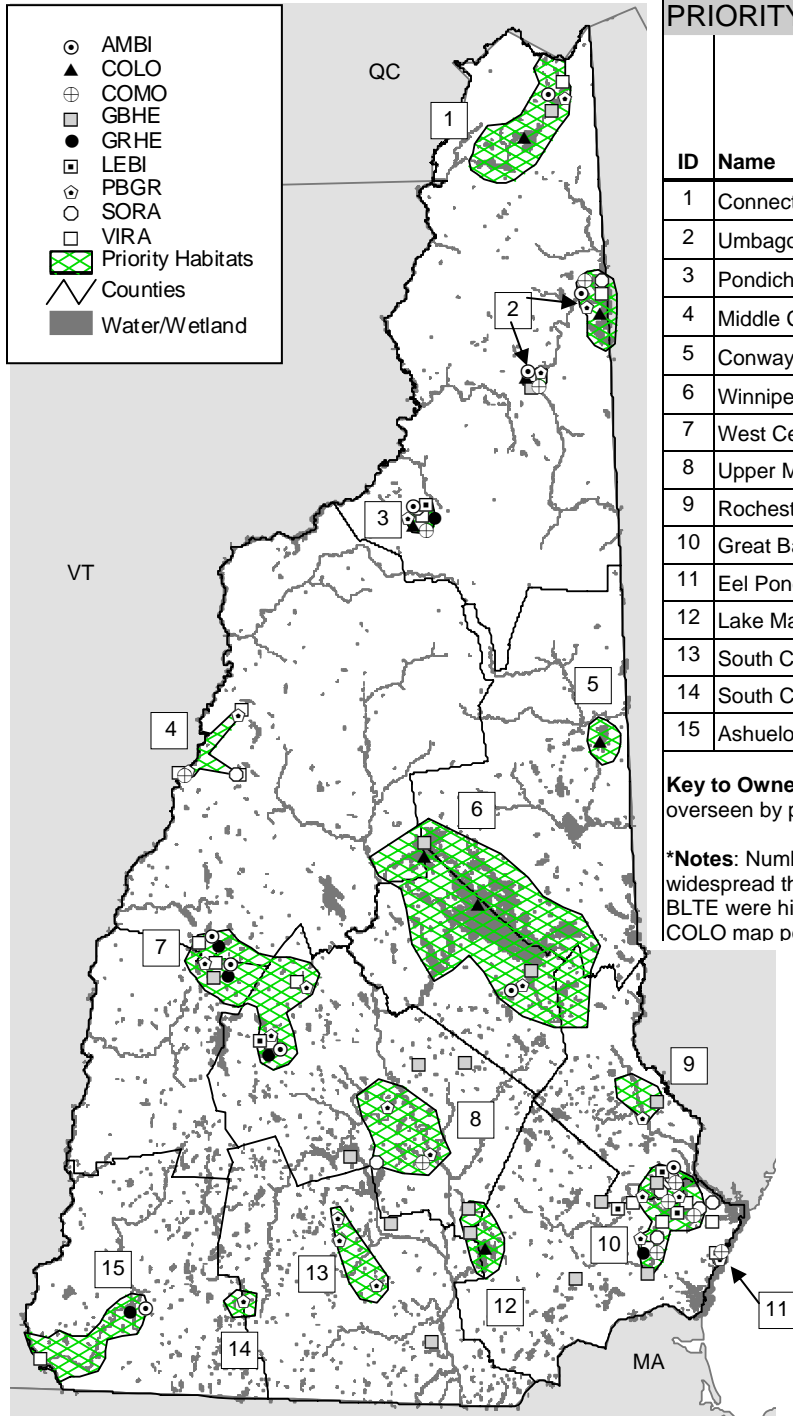


# New Hampshire Priority Inland Waterbird Habitats



PRIORITY INLAND WATERBIRD HABITATS

ID	Name	Species Occurrence*										% Protected-Owner	Conservation Issues
		AMBI	COLO	COMO	GBHE	GRHE	LEBI	PBGR	SORA	VIRA	TOTAL		
1	Connecticut Lakes	0	18	0	1	0	0	1	0	1	21	100-s(e)p	Boat traffic?
2	Umbagog/Androscoggin	1	27	2	11	0	0	2	1	2	46	50-fs	Water levels, boat traffic
3	Pondicherry Refuge	0	1	1	1	0	1	1	1	1	7	100-f	
4	Middle CT River	0	0	1	1	0	0	2	0	3	7	25-sp	Invasives?
5	Conway Lake	0	4	0	0	0	0	0	0	0	4	0-u	Boat traffic, shoreline development
6	Winnepesaukee Region	0	51	0	12	2	0	1	0	0	66	0-u	Boat traffic, shoreline development
7	West Central Wetlands	2	0	0	6	0	1	3	0	4	16	50-s	Habitat management
8	Upper Merrimack River	0	0	1	3	0	0	2	1	0	7	25-sp	Invasives?, habitat management
9	Rochester Wetlands	2	0	0	2	1	0	1	0	0	6	0-u	Development, habitat management
10	Great Bay Wetlands	0	0	4	4	0	2	3	4	4	21	50-fsp	Invasives, habitat management
11	Eel Pond	0	0	0	0	1	1	1	0	1	4	0-u	Invasives
12	Lake Massabesic	0	6	0	0	0	0	0	0	0	6	50-m	(public water supply)
13	South Central Wetlands (East)	1	0	0	0	0	0	3	0	0	4	50-fsmp	Habitat management
14	South Central Wetlands (West)	1	0	0	3	0	0	1	1	0	6	50-fsmp	Water levels
15	Ashuelot Wetlands	0	0	0	2	0	0	0	0	1	3	<10-f	

**Key to Owner Information:** f=federal, s= state, m=municipal (town, city, or agent thereof), p=private conservation org, (e)=easement overseen by preceding entity, u=unknown

**\*Notes:** Numbers represent number of confirmed breeding occurrences found within each habitat. AMBI, GRHE and VIRA are widespread throughout the state but largely absent from the White Mountains. AMBI is also absent near the Atlantic coast. KIRA and BLTE were historically breeding in New Hampshire but no current record exists. GBHE map points show only colonies with >24 nests. COLO map points show only locations with >5 breeding pairs.

Associated Conservation Projects  
Project Numbers: