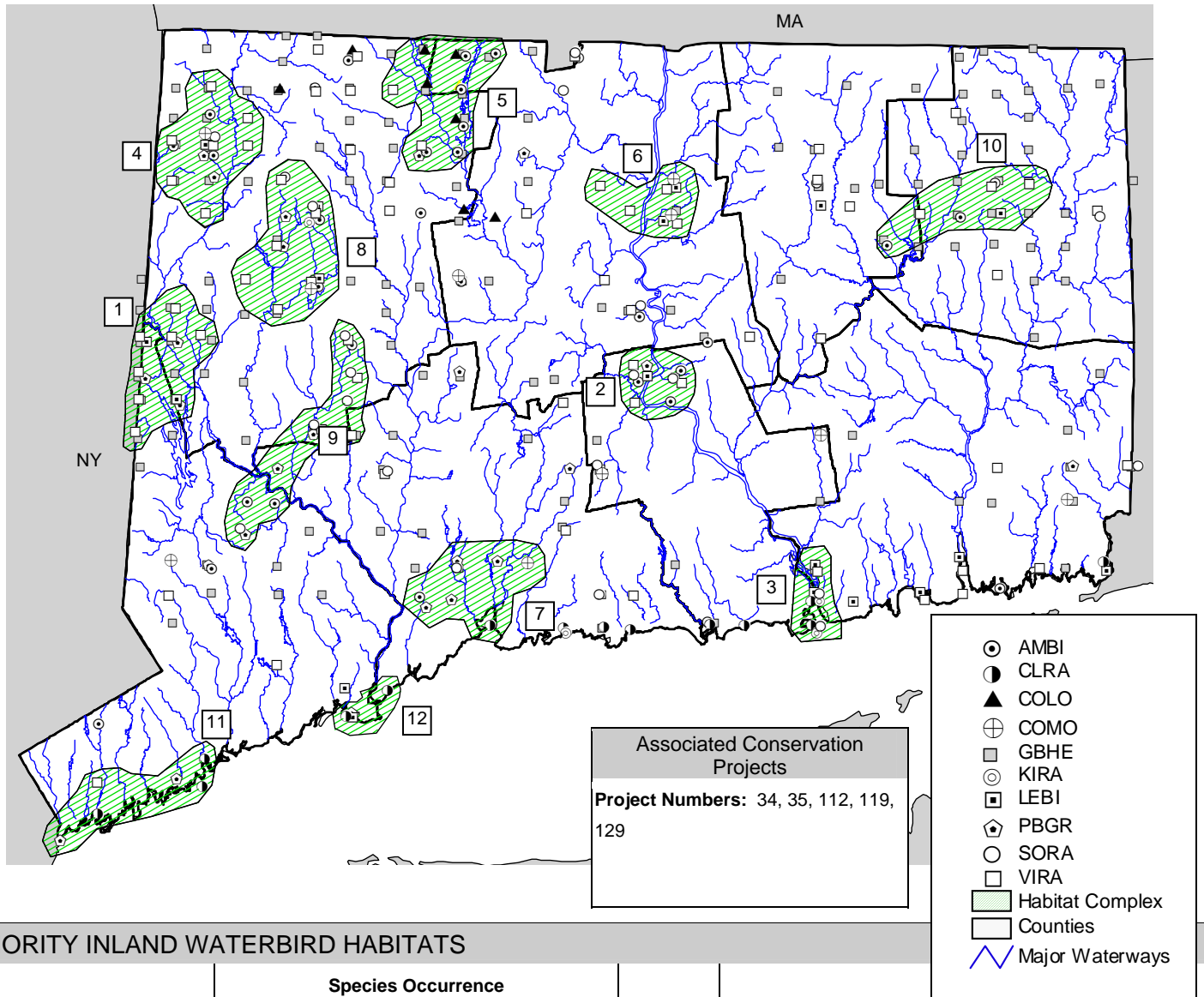


# Connecticut Priority Inland Waterbird Habitats



## PRIORITY INLAND WATERBIRD HABITATS

ID	Complex Name	Species Occurrence									TOTAL	Approx % of Area Protected	Conservation Actions
		AMBI	CLRA	COLO	COMO	GBHE	KIRA	LEBI	PBGR	SORA			
1	Western State	0	0	0	0	0	2	3	0	7	12		Redo the CT Breeding Bird Atlas; eastern CT not correctly represented.
2	Middletown - CT River	3	0	0	0	0	1	1	2	3	10		
3	Lords Cove	0	2	0	0	2	2	0	2	1	9		
4	Housatonic	3	0	0	1	0	1	2	1	7	15		
5	Barkhamsted	6	0	5	0	0	0	1	0	2	14		
6	Hartford	0	0	0	2	0	2	0	0	4	8		
7	New Haven	1	1	0	1	0	0	4	1	0	8		
8	Bantam	3	0	0	1	1	2	2	1	6	16		
9	Pomperaug	3	0	0	0	0	0	3	5	4	14		
10	Natchaug	3	0	0	0	0	1	0	0	3	7		
11	Coastal Stamford	0	3	0	0	0	0	2	0	1	6		
12	Wheeler Marsh	?	?										Introduced animals (cats, Mute Swans), predators, pollution, habitat conversion (succession on barrier beach, invasive or non-native plants), disturbance to birds or habitat (by recreational beach-goers and domestic animals), hydrologic changes (rising sea level), development on adjacent land