



**Trinity Redd Survey Update, 12-07-2007**

The [Arcata Fish and Wildlife Office](#) along with the [California Department of Fish and Game](#), [Yurok Tribal Fisheries Program](#), [Hoopa Valley Tribal Fisheries Department](#), and [Shasta-Trinity National Forest](#) survey the mainstem Trinity River to recover salmonid carcasses and count and map Chinook salmon (*Oncorhynchus tshawytscha*) redds. The distribution of Chinook salmon redds is expected to change in response to rehabilitation efforts of the [Trinity River Restoration Program](#), and the relative run size of wild vs. [Trinity River Hatchery](#) origin fish. Redd and carcass surveys are conducted weekly on the River between Lewiston Dam and the North Fork Trinity River (Reaches 1 through 7), and are conducted every other week on the Reaches downstream of the North Fork Trinity River. This mid-season update provides preliminary data on 2007 redd counts encountered and entered into our database as of 12/07/2007 (Table 1). Graphs are also presented to compare preliminary 2007 cumulative redd counts by reach with an average of the 5 previous years (Figure 1 through 10).

For more information regarding mainstem Trinity River redd surveys, please contact Charlie Chamberlain at (707) 822-7201 or [charles\\_chamberlain@fws.gov](mailto:charles_chamberlain@fws.gov)

**Table 1. Preliminary count of redds by logistic reach for the fall 2007 mainstem Trinity River redd survey. Redds constructed by Chinook and coho salmon are not differentiated. Numbers are later adjusted for Chinook salmon using data provided by California Department of Fish and Game. Reach 11 not surveyed due to extreme whitewater (Burnt Ranch Gorge). These data are preliminary and subject to revision.**

Calendar Week	Date Range	Reach														Week Total
		1	2	3	4	5	6	7	8	9	10	12	13	14		
38	09/16 - 09/22		0	0	2	3	0	0	0	0	0					5
39	09/23 - 09/29	148	3	3	5	17	12	4								192
40	09/30 - 10/06	279	35	57	56	45	55	12	2	13	9					563
41	10/07 - 10/13	219	66	72	41		52	8				0	0	0		458
42	10/14 - 10/20	127	78	47	25	91	23	18	21	81	32					543
43	10/21 - 10/27	119	50	53	69	58	22	10				1	0	0		382
44	10/28 - 11/03	111	29	60	93	51	15	9	7	30	16					421
45	11/04 - 11/10	146	55	37	34	51	9	26	2			11	3	0		374
46	11/11 - 11/17	200	103	35	69	32	2	2	3	23	7					476
47	11/18 - 11/24	463	72		21	60	1	1				10				628
<b>Reach Total</b>		<b>1,812</b>	<b>491</b>	<b>364</b>	<b>415</b>	<b>408</b>	<b>191</b>	<b>90</b>	<b>35</b>	<b>147</b>	<b>64</b>	<b>22</b>	<b>3</b>	<b>0</b>	<b>4,042</b>	



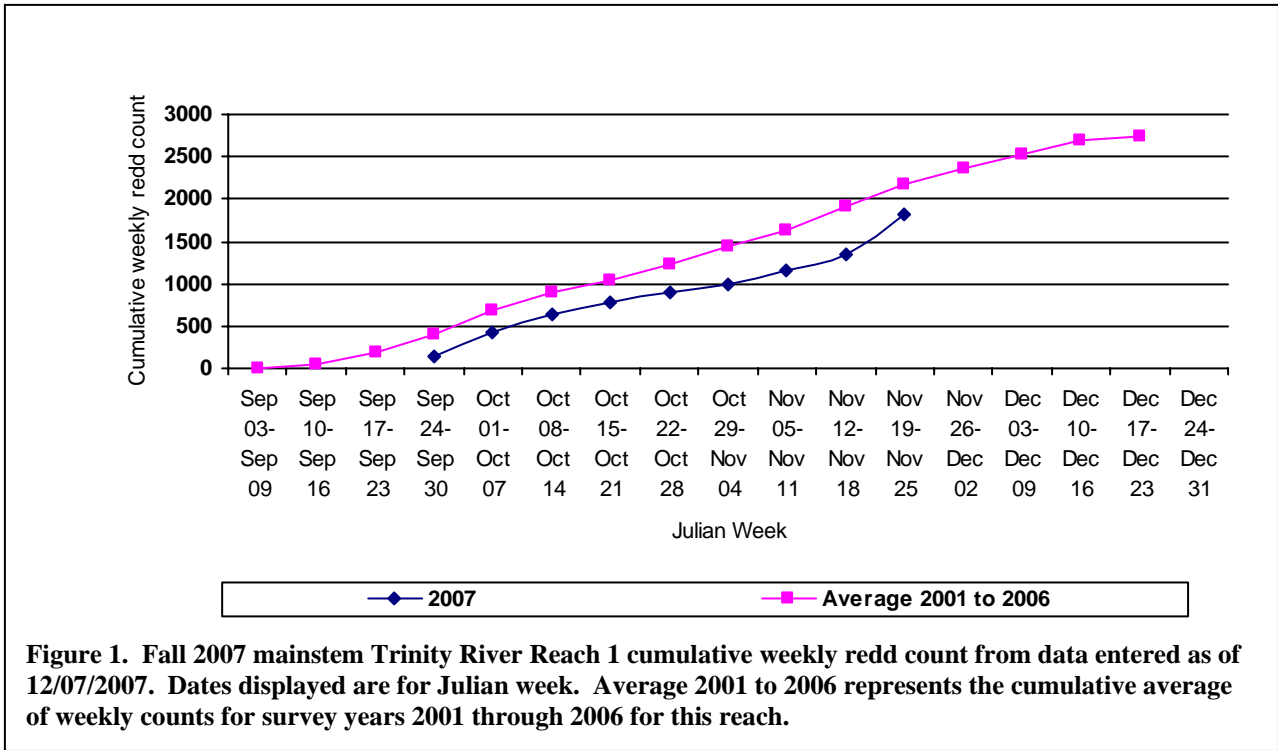


Figure 1. Fall 2007 mainstem Trinity River Reach 1 cumulative weekly redd count from data entered as of 12/07/2007. Dates displayed are for Julian week. Average 2001 to 2006 represents the cumulative average of weekly counts for survey years 2001 through 2006 for this reach.

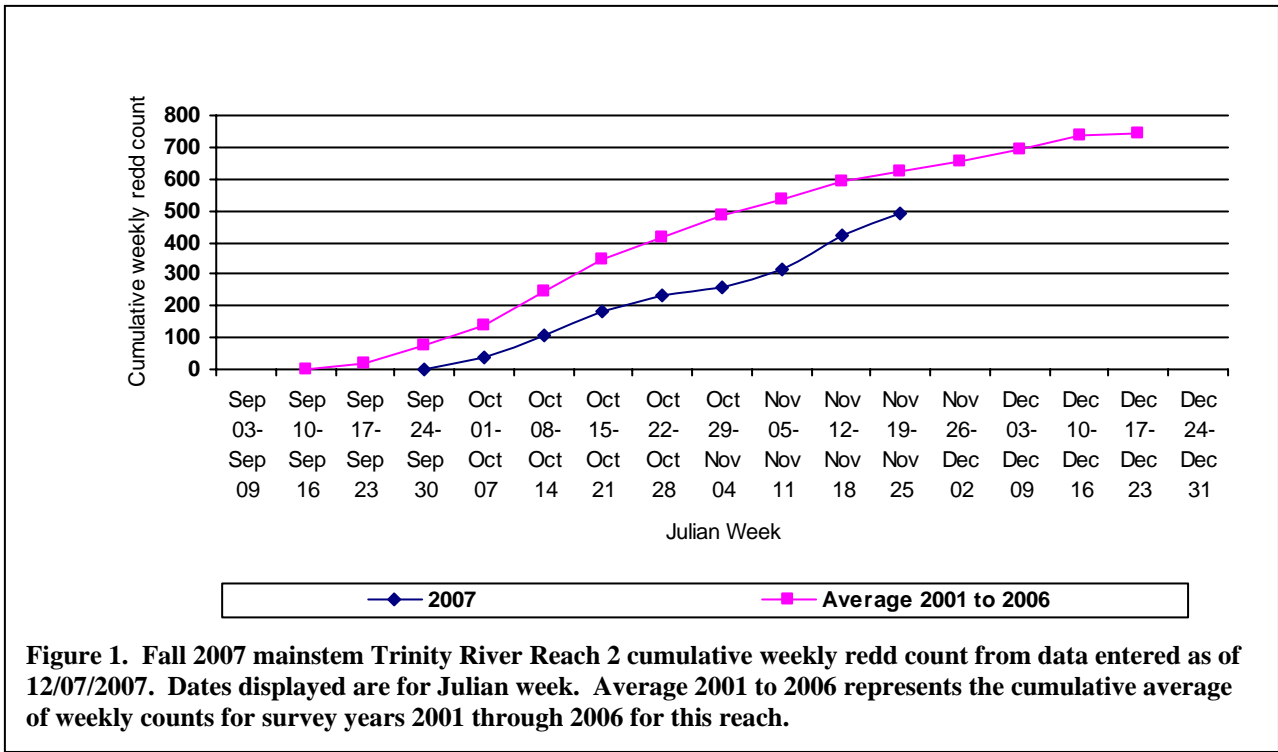


Figure 1. Fall 2007 mainstem Trinity River Reach 2 cumulative weekly redd count from data entered as of 12/07/2007. Dates displayed are for Julian week. Average 2001 to 2006 represents the cumulative average of weekly counts for survey years 2001 through 2006 for this reach.

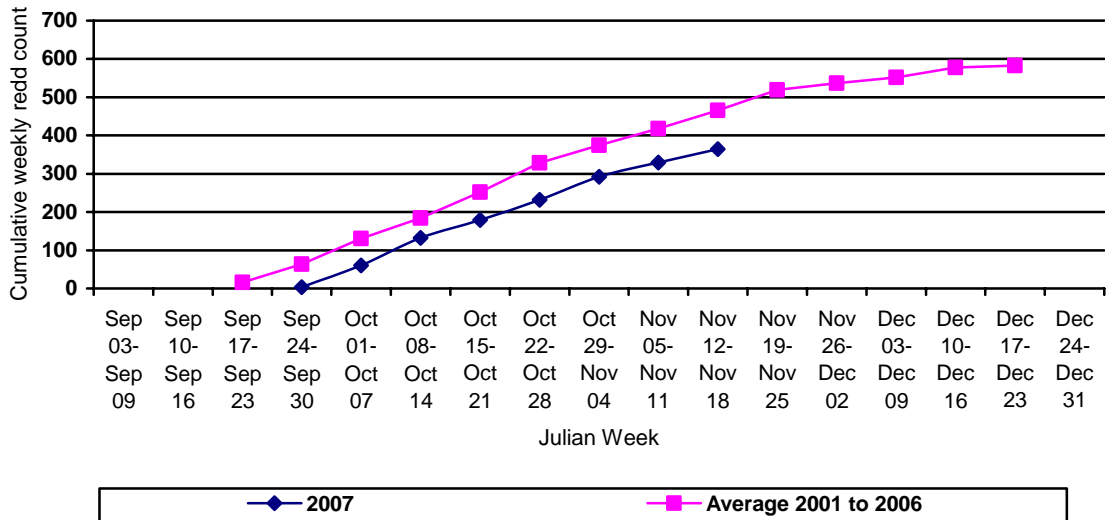


Figure 3. Fall 2007 mainstem Trinity River Reach 3 cumulative weekly redd count from data entered as of 12/07/2007. Dates displayed are for Julian week. Average 2001 to 2006 represents the cumulative average of weekly counts for survey years 2001 through 2006 for this reach.

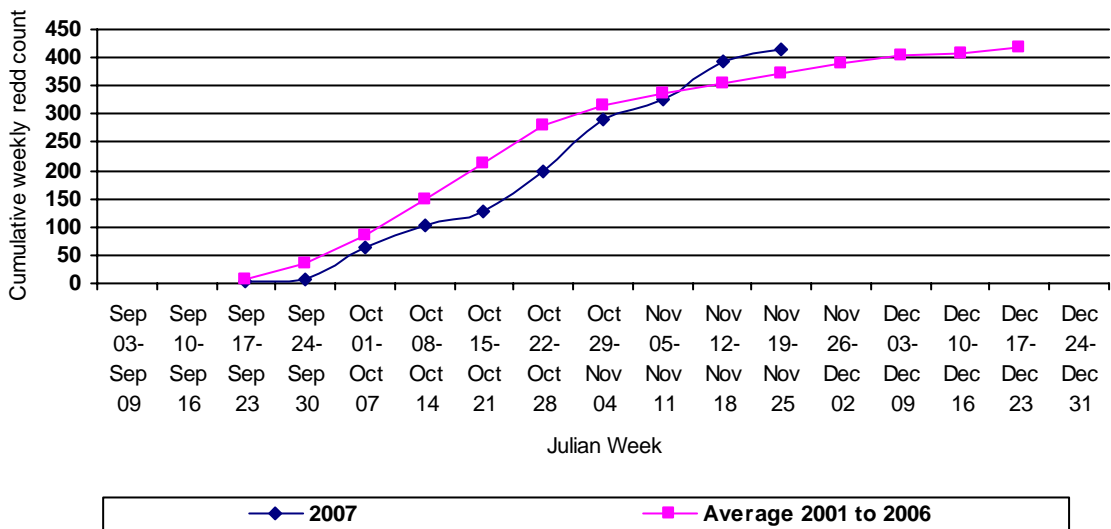
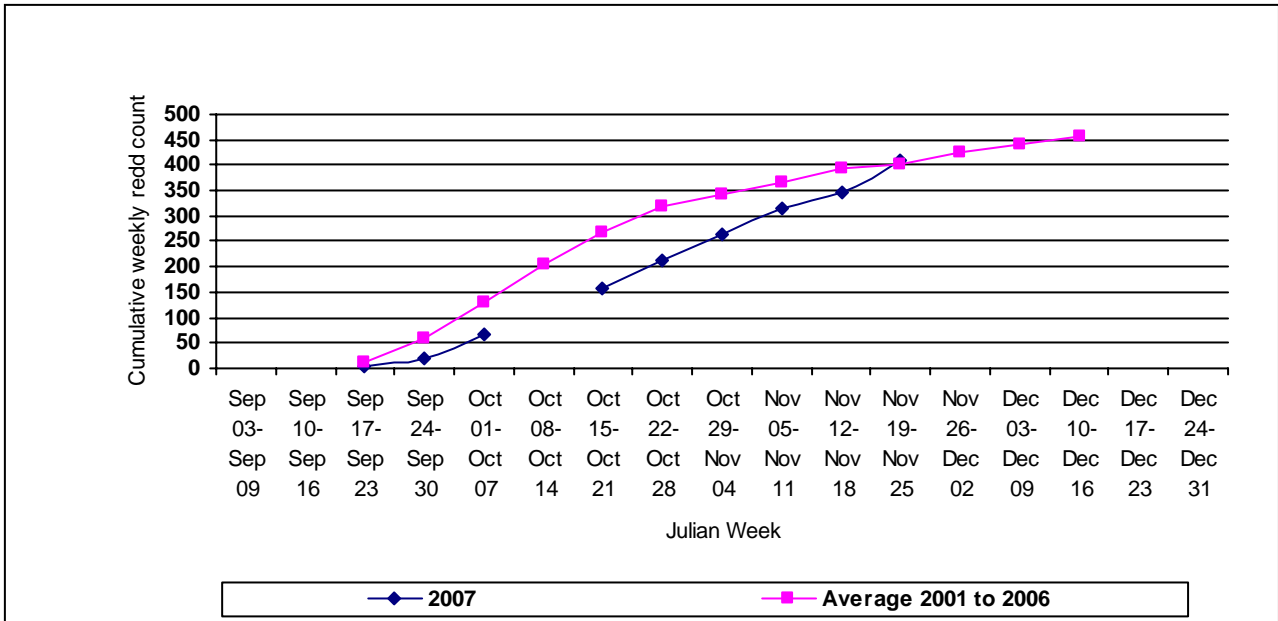
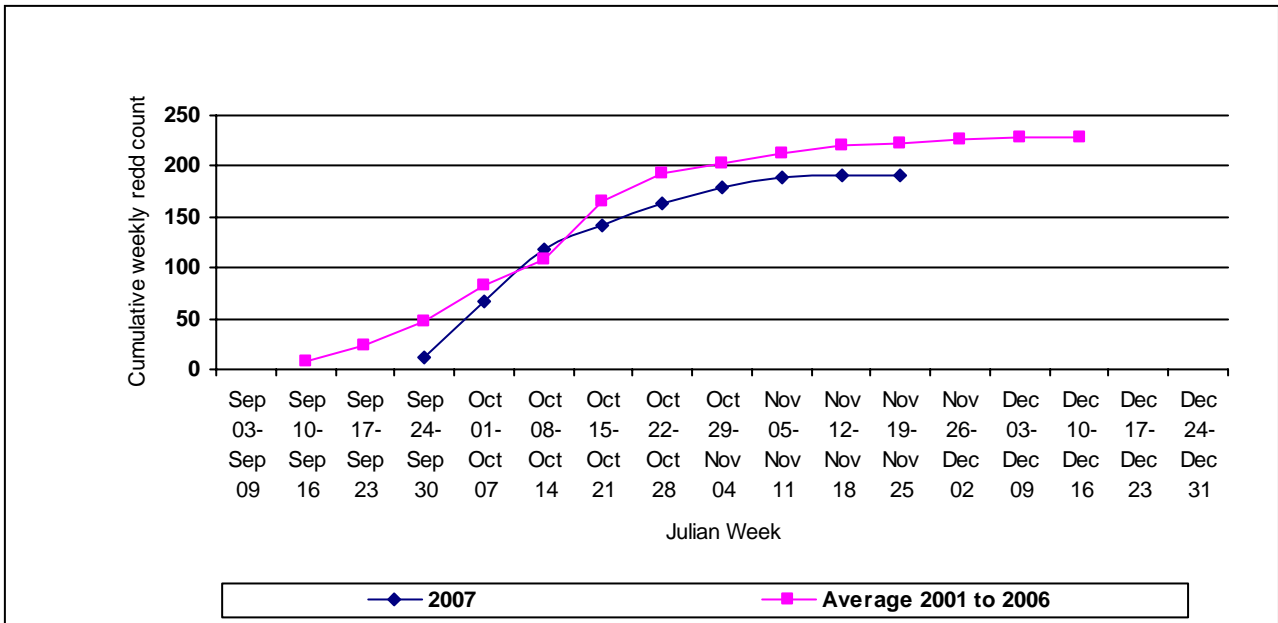


Figure 4. Fall 2007 mainstem Trinity River Reach 4 cumulative weekly redd count from data entered as of 12/07/2007. Dates displayed are for Julian week. Average 2001 to 2006 represents the cumulative average of weekly counts for survey years 2001 through 2006 for this reach.



**Figure 5.** Fall 2007 mainstem Trinity River Reach 5 cumulative weekly redd count from data entered as of 12/07/2007. Dates displayed are for Julian week. Average 2001 to 2006 represents the cumulative average of weekly counts for survey years 2001 through 2006 for this reach.



**Figure 6.** Fall 2007 mainstem Trinity River Reach 6 cumulative weekly redd count from data entered as of 12/07/2007. Dates displayed are for Julian week. Average 2001 to 2006 represents the cumulative average of weekly counts for survey years 2001 through 2006 for this reach.

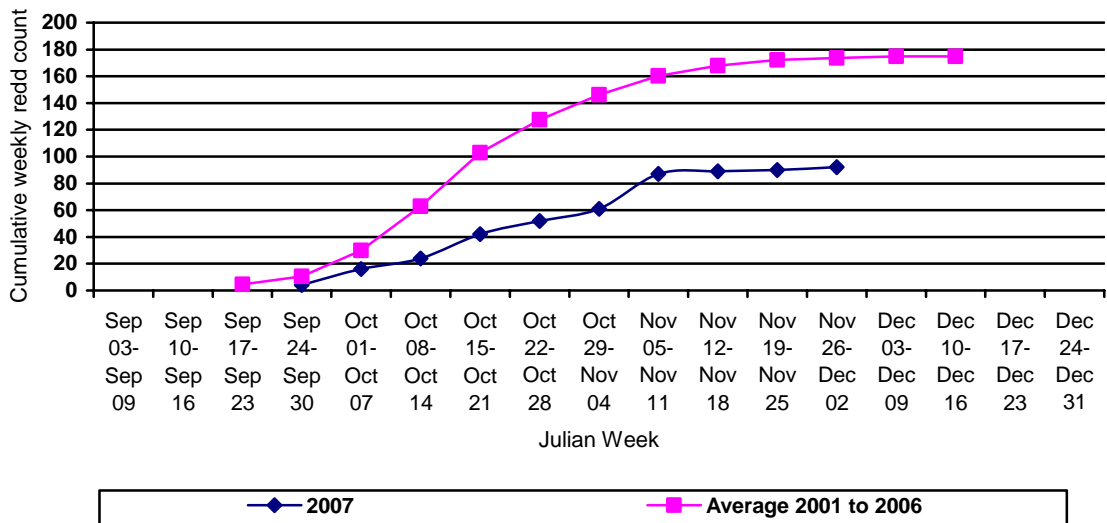


Figure 7. Fall 2007 mainstem Trinity River Reach 7 cumulative weekly redd count from data entered as of 12/07/2007. Dates displayed are for Julian week. Average 2001 to 2006 represents the cumulative average of weekly counts for survey years 2001 through 2006 for this reach.

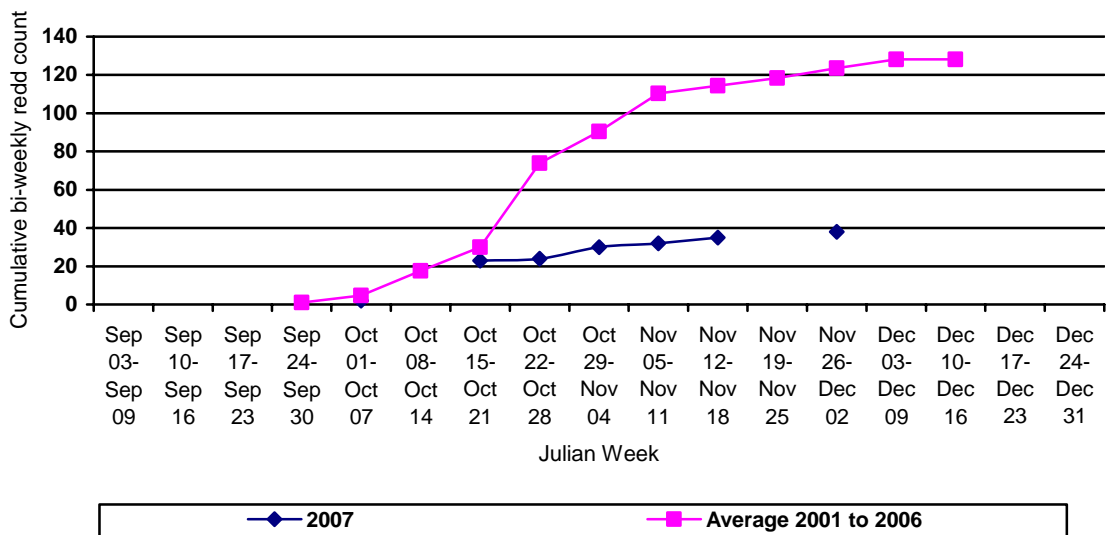
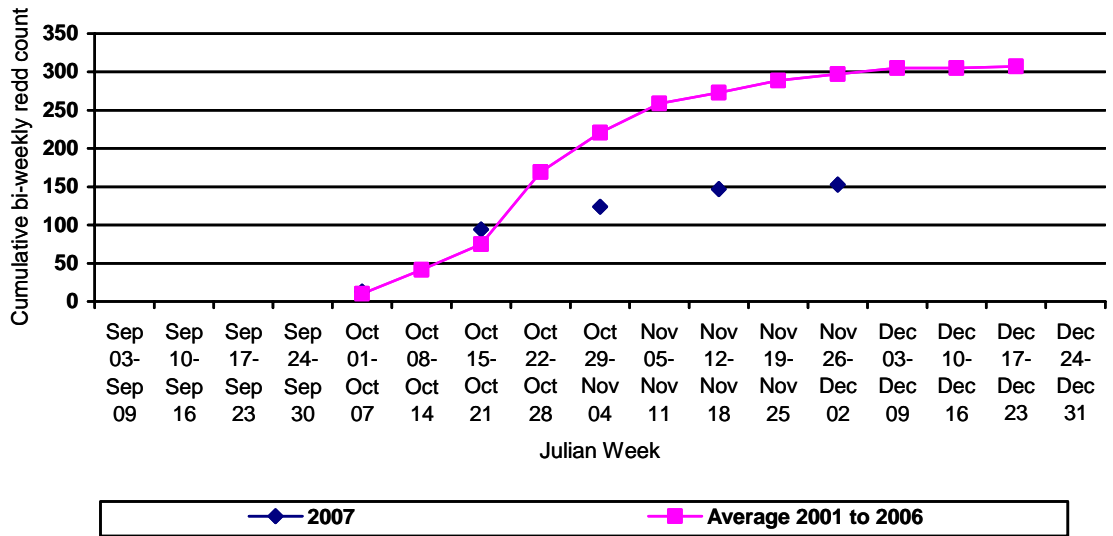
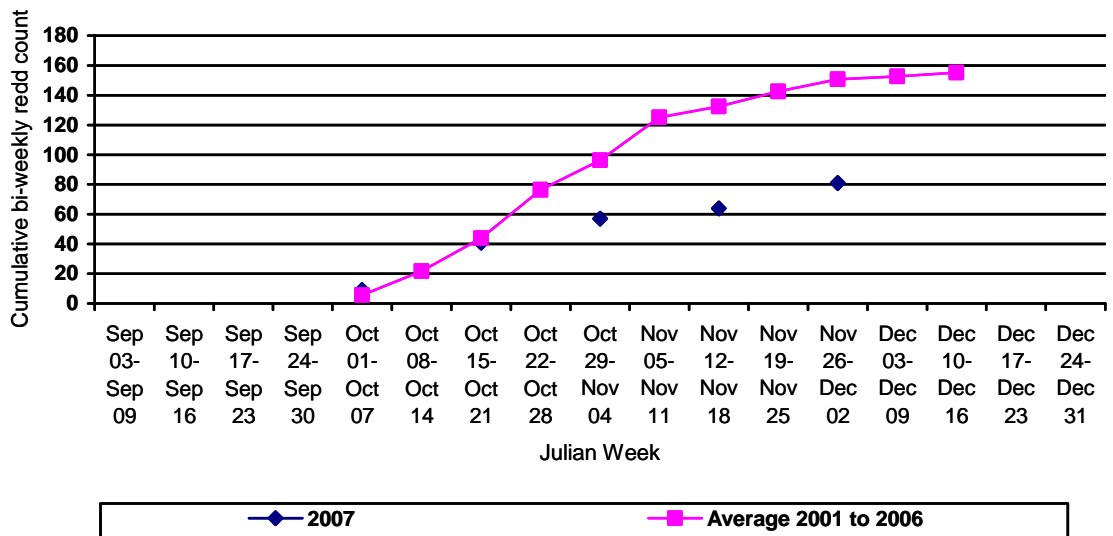


Figure 8. Fall 2007 mainstem Trinity River Reach 8 cumulative bi-weekly redd count from data entered as of 12/07/2007. Dates displayed are for Julian weeks. Average 2001 to 2006 represents the cumulative average of bi-weekly counts for survey years 2001 through 2006 for this reach.



**Figure 9. Fall 2007 mainstem Trinity River Reach 9 cumulative bi-weekly redd count from data entered as of 12/07/2007. Dates displayed are for Julian weeks. Average 2001 to 2006 represents the cumulative average of bi-weekly counts for survey years 2001 through 2006 for this reach.**



**Figure 10. Fall 2007 mainstem Trinity River Reach 10 cumulative bi-weekly redd count from data entered as of 12/07/2007. Dates displayed are for Julian weeks. Average 2001 to 2006 represents the cumulative average of bi-weekly counts for survey years 2001 through 2006 for this reach.**